

The ADMS-1807 Programmer is designed to give you the ease and convenience of programming the memories and set menu options of your radio from your PC.

Memory Channels Include:

- 200 Memory Channels
- 18 Limit Memories (9 pair)
- 1 VFO Channel
- 1 Home Channel

Other Menu Item Categories Include:

- Common
- Misc. Settings
- DTMF/Internet

The Programmer Is for so Much More than Just Memory Management.

With the ADMS-1807 Programmer you can begin a new “factory fresh” file into which frequencies and option settings are entered. Or, you can read from the radio, store these details on your computer and make changes. Then, with minimal button pushing, send the new configuration back to the radio.

The Programmer allows you to create and save as many files as you want for your radio. Files can even be shared between users via email or the Internet. Any RT Systems Version 4.50 program can open a file from any other RT Systems Version 4.50 programmer... even from a different radio.

Managing all the options of this great little radio becomes easy with the Programmer. The cut, copy, paste and insert features of the Programmer make channel management easier than ever.

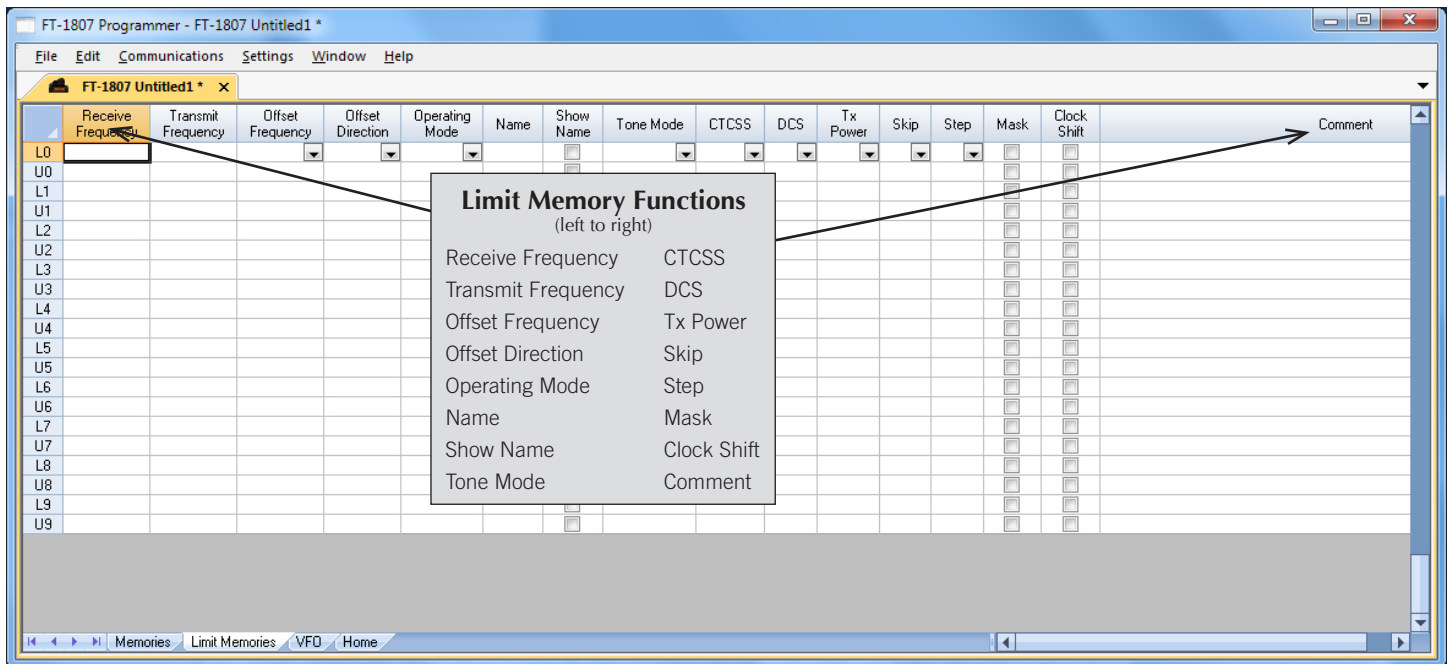
Open more than one file at a time. Memory channel information can be copied from one file to another within the Programmer making it really easy to set up a new file.



Hardware Requirements:

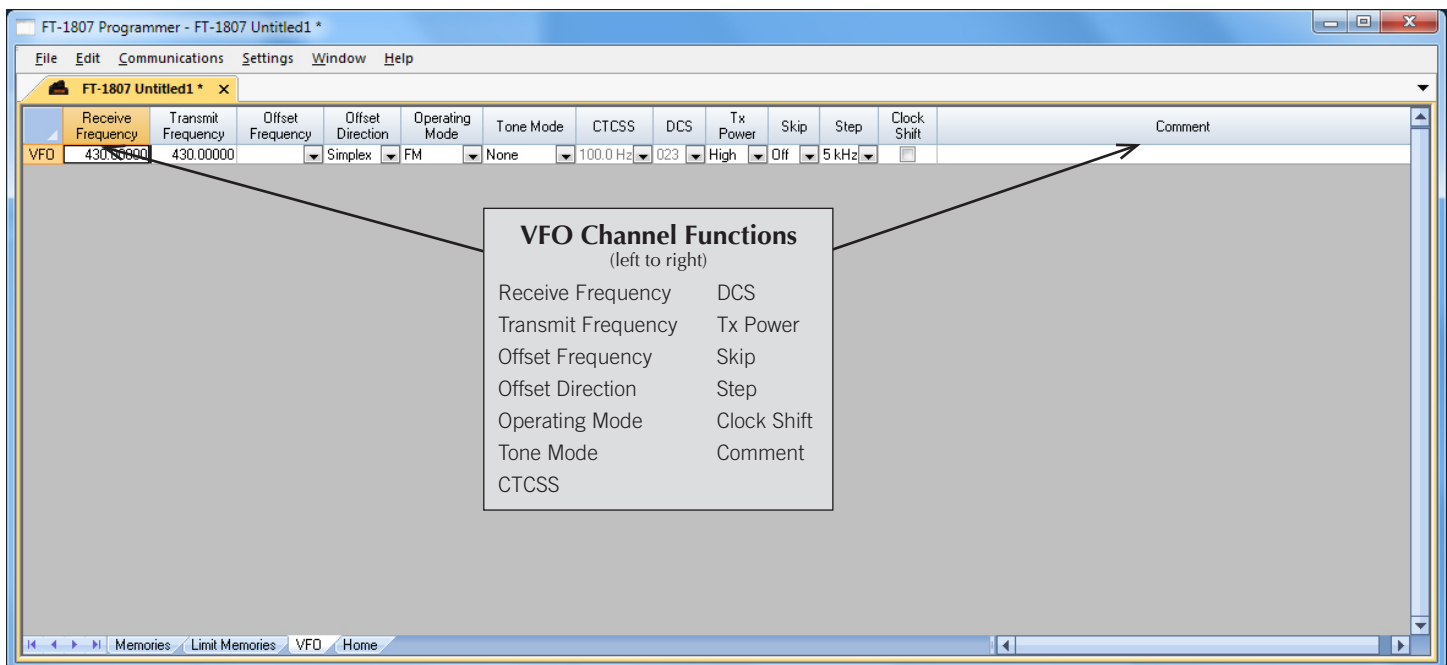
A PC running Windows XP, Vista, Windows 7 (32 or 64 bit) or Windows 8 (full version). A CD drive (local or network) for installation. A free USB port. The RT Systems USB-29F interface cable. The cable connects the radio to the computer from the USB port on the computer to the mic jack on the radio.





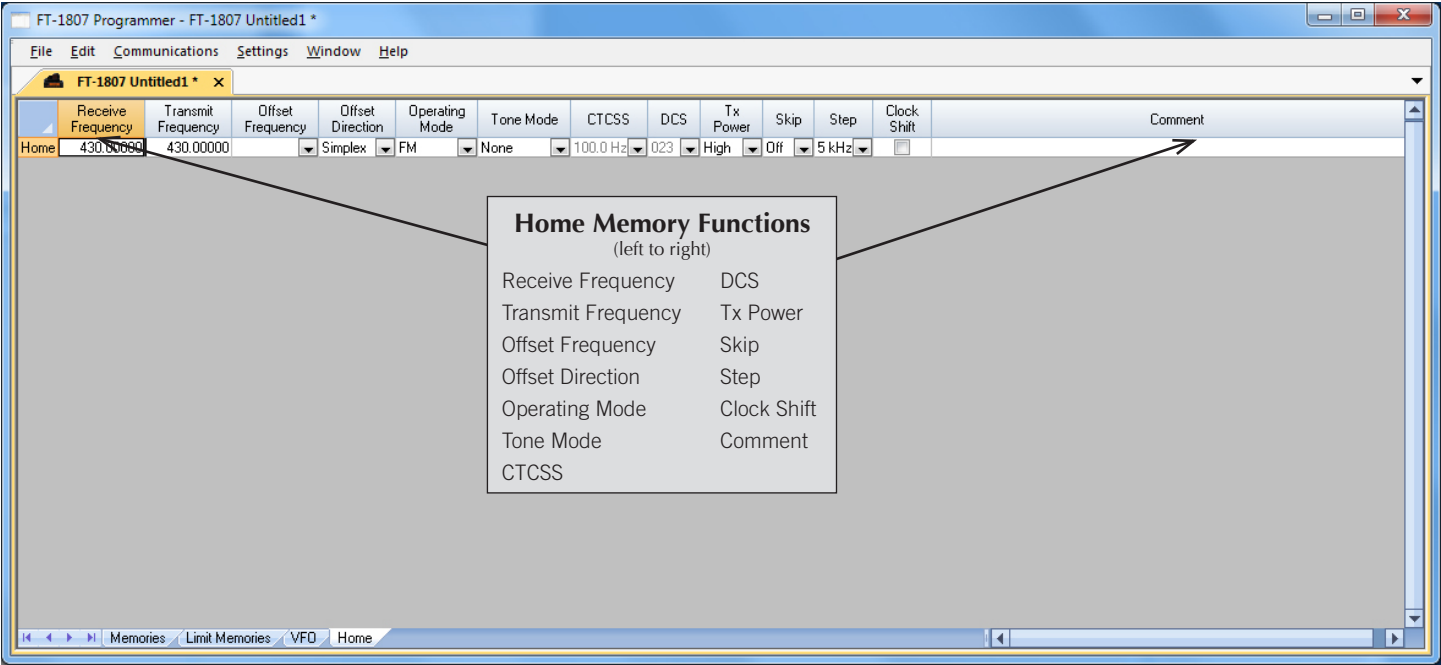
Limit Memories

Limit Memories are used by the radio for Program Scan. Program the same details for Limit Memories as for regular memory channels. Many of the Limit Memories are preprogrammed in the radio and while the frequency can be changed to another within the band, they cannot be left blank.



VFO

The program makes available the same VFO's as in the radio (usually one per band). Remember these are not real memory channels since the details are lost as soon as you tune the radio manually. There is no one button recall for these. You do not need to program into VFO before programming details into a memory channel. These channels are preprogrammed in the radio and while the frequency can be changed to another within the band, they cannot be left blank.

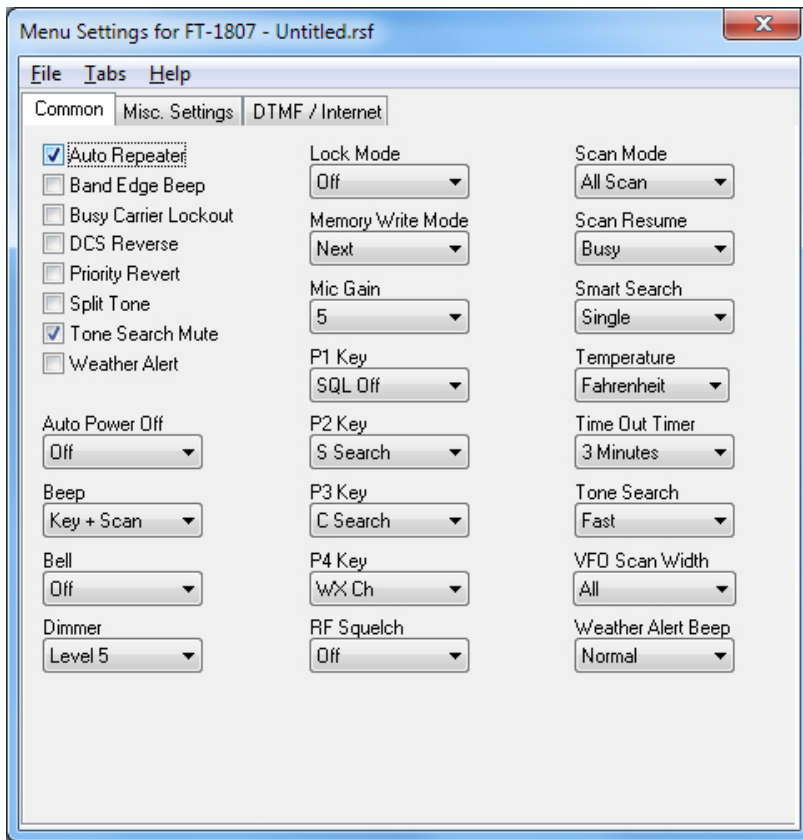


Home

Home/Call channels are special memories accessed through one button recall on the radio. These channels are preprogrammed in the radio and while the frequency can be changed to another within the band, they cannot be left blank.

Buy Now

ADMS-1807 Programming Software Radio Option Setting Screens



Menu Settings for FT-1807 - Untitled.rsf

File Tabs Help

Common Misc. Settings DTMF / Internet

☒ Auto Repeater
☐ Band Edge Beep
☐ Busy Carrier Lockout
☐ DCS Reverse
☐ Priority Revert
☐ Split Tone
☒ Tone Search Mute
☐ Weather Alert

Auto Power Off
Off

Beep
Key + Scan

Bell
Off

Dimmer
Level 5

Lock Mode
Off

Memory Write Mode
Next

Mic Gain
5

P1 Key
SQL Off

P2 Key
S Search

P3 Key
C Search

P4 Key
WX Ch

RF Squelch
Off

Scan Mode
All Scan

Scan Resume
Busy

Smart Search
Single

Temperature
Fahrenheit

Time Out Timer
3 Minutes

Tone Search
Fast

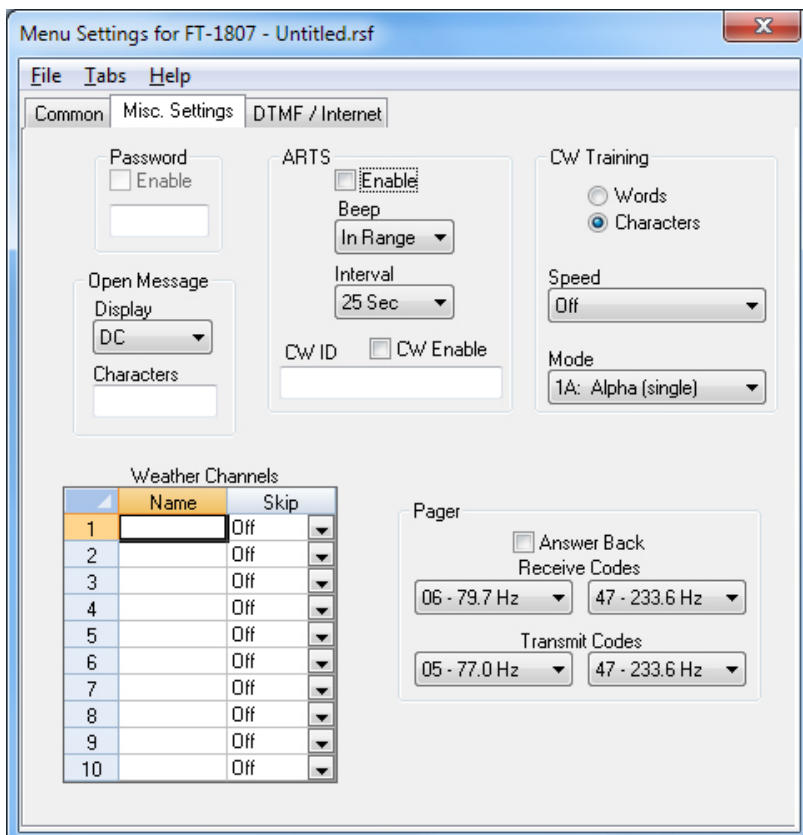
VFO Scan Width
All

Weather Alert Beep
Normal

Common

Use these screens to customize other set menu features of the radio. Check boxes toggle features on or off, drop down menus list all selections and blank boxes for personalized entry add to the ease of setting up your radio exactly like you want it.

The entries on the Settings screens are made for you to "Set and Forget". Once settings are customized, you are prompted to save before exiting. The saved settings will be there every time you create a new frequency file.



Menu Settings for FT-1807 - Untitled.rsf

File Tabs Help

Common Misc. Settings DTMF / Internet

Password
☐ Enable

Open Message
Display
DC
Characters

ARTS
☒ Enable
Beep
In Range
Interval
25 Sec
CW ID
☐ CW Enable

CW Training
☐ Words
☒ Characters
Speed
Off
Mode
1A: Alpha (single)

Weather Channels

	Name	Skip
1		Off
2		Off
3		Off
4		Off
5		Off
6		Off
7		Off
8		Off
9		Off
10		Off

Pager
☐ Answer Back
Receive Codes
06 - 79.7 Hz 47 - 233.6 Hz
Transmit Codes
05 - 77.0 Hz 47 - 233.6 Hz

Misc. Settings

Settings for Password, ARTS, CW, Weather and Pager are customized on this screen.

Menu Settings for FT-1807 - Untitled.rsf

File

Tabs

Help

Common

Misc. Settings

DTMF / Internet

DTMF Settings

Autodialer

Manual

Channel

1

Delay

450 ms

Speed

50 ms

DTMF

0	
1	
2	
3	
4	
5	
6	
7	
8	
9	

Wires

Mode

SRG

Autodialer

Manual

DTMF Code

1

DTMF Memory

1

Internet Link Systems

	Access	Alpha
0		
1		
2		
3		
4		
5		
6		
7		
8		
9		

DTMF/Internet

Enter DTMF and Internet (wires) memory details to customize options for the functions of the radio.

The screenshot shows the 'Grid Display' tab of the Preferences dialog. It includes a 'Freeze' spinner set to 1, an 'Alternate row' table with rows 1-4 and a header 'A', 'Fore' and 'Back' buttons, a 'Use Combo for Check box' checkbox, and a 'Language' dropdown set to 'English'. A table titled 'Mark the columns to hide.' lists various fields with checkboxes to hide them.

Column	Hide
Transmit Frequency	<input type="checkbox"/>
Offset Frequency	<input type="checkbox"/>
Offset Direction	<input type="checkbox"/>
Name	<input type="checkbox"/>
Tone Mode	<input type="checkbox"/>
CTCSS	<input type="checkbox"/>
Rx CTCSS	<input type="checkbox"/>
DCS	<input type="checkbox"/>
Tx Power	<input type="checkbox"/>
Busy Channel Lockout	<input type="checkbox"/>
Skip	<input type="checkbox"/>
Clock Shift	<input type="checkbox"/>
Battery Save	<input type="checkbox"/>
Comment	<input type="checkbox"/>

Grid Display

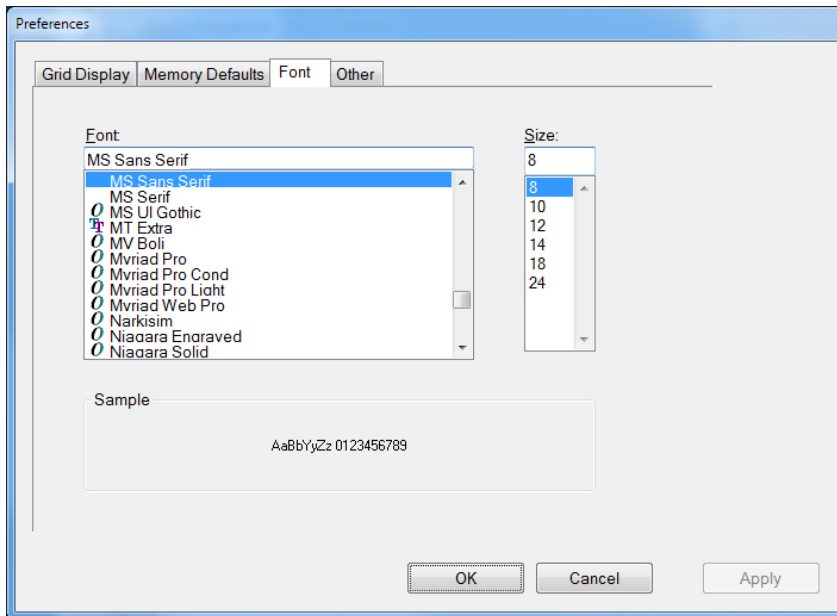
- RT Systems now available in English, French, German, Italian, Spanish, Portuguese and Japanese.
- Set colors for text (Fore) or background (Back) of alternate rows for easier viewing across the columns.
- Freeze columns to keep information on the screen as you scroll to the right of the page.
- Hide columns you don't use. Customize your print-out: hidden columns do not print.
- Use Combo for Check boxes – changes the grid to eliminate check box selections that are disabled on some systems.

The screenshot shows the 'Memory Defaults' tab of the Preferences dialog. It includes four checked checkboxes for file and display settings, a table for 'Offset Frequency Defaults' with values for HF, 6m, 2m, 1.25m, and 70cm bands, and a table for 'Add and Remove Offsets' with a list of offsets and a 'Remove' button.

Offset	Value
1	100 kHz
2	500 kHz
3	600 kHz
4	1.00 MHz

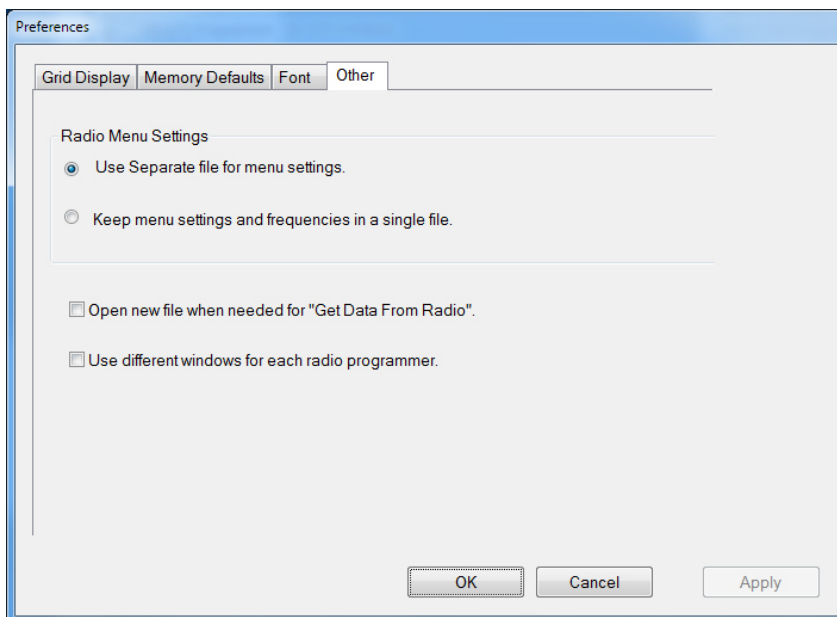
Memory Defaults

- Set options to control auto fill information for memory channel entries.



Font

- Set options to control the font in the column headers of the channel entry screens. Select any font and font size available on your computer.



Other

- Set options to control how the programmer handles the global Radio Menu Settings file.
 - Separate (default) handles the global settings of the radio in a “set and forget” fashion. Once you set these up and save the file you won’t have to reset them for a new frequency file.
 - Together as one gives you the ability to create files that are complete with frequencies and customized global settings. In this mode, each file begins with factory defaults for every option of the radio.
- Check “Get data from Radio” new file option to prevent data loss when you read from your radio into the programmer.
- Check “different window” option to make the programmer for a different radio run in completely separate window rather than in a separate tab of the same window.

Buy Now