

The ADMS-FT1D Programmer is designed to give you the ease and convenience of programming the memories and set menu options of your radio from your PC.

#### Memory Channels Include:

- 900 Memory Channels
- 98 Skip Memories
- 100 Limit Memories (50 pair)
- 11 VFO A Channels
- 6 VFO B Channels
- 11 Home Channels
- 88 Marine Memories
- 89 Shortwave Memories
- 10 Weather Memories

#### Other Menu Item Categories Include:

- Common 1
- Common 2
- Messages
- DTMF/Internet
- APRS
- APRS Beacon
- GPS
- Group Messaging

**The Programmer Is for so Much More than Just Memory Management.**

With the ADMS-FT1D Programmer you can begin a new "factory fresh" file into which frequencies and option settings are entered. Or, you can read from the radio, store these details on your computer and make changes. Then, with minimal button pushing, send the new configuration back to the radio.

The Programmer allows you to create and save as many files as you want for your radio. Files can even be shared between users via email or the Internet. Any RT Systems Version 4.50 program can open a file from any other RT Systems Version 4.50 programmer... even from a different radio.

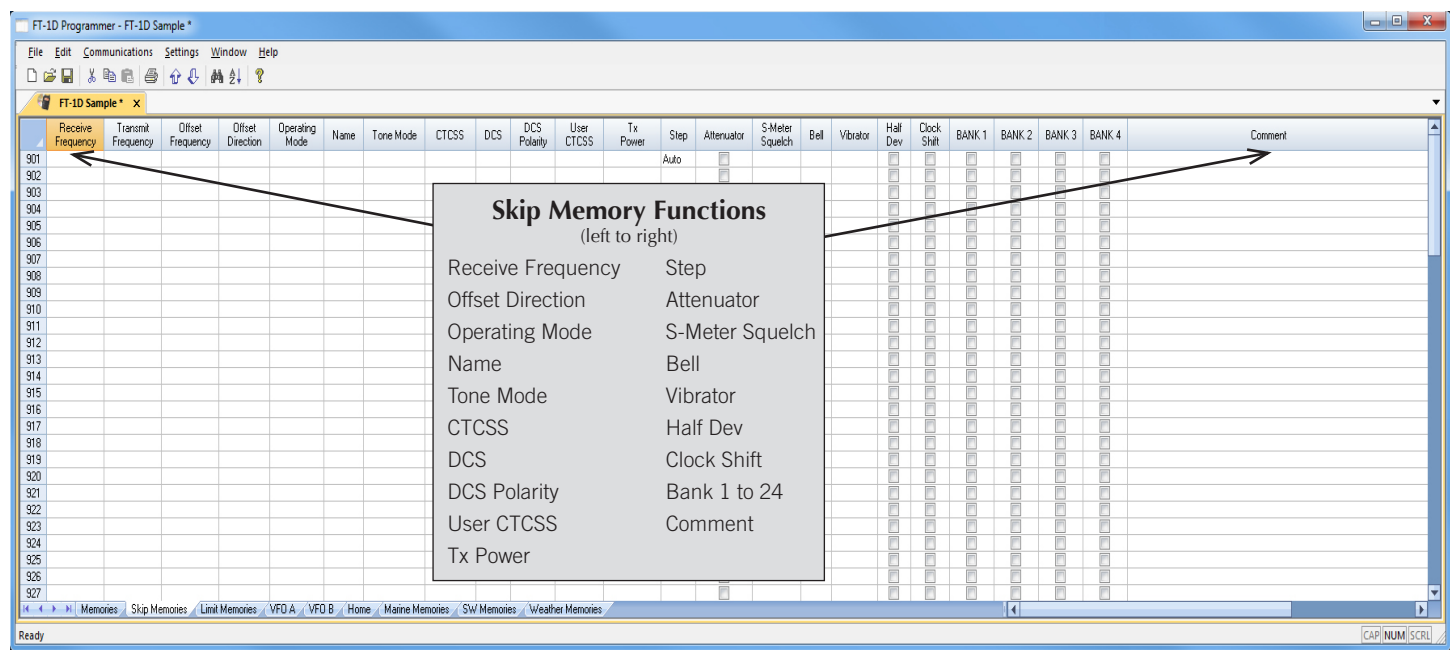
Managing all the options of this great little radio becomes easy with the Programmer. The cut, copy, paste and insert features of the Programmer make channel management easier than ever.

Open more than one file at a time. Memory channel information can be copied from one file to another within the Programmer making it really easy to set up a new file.



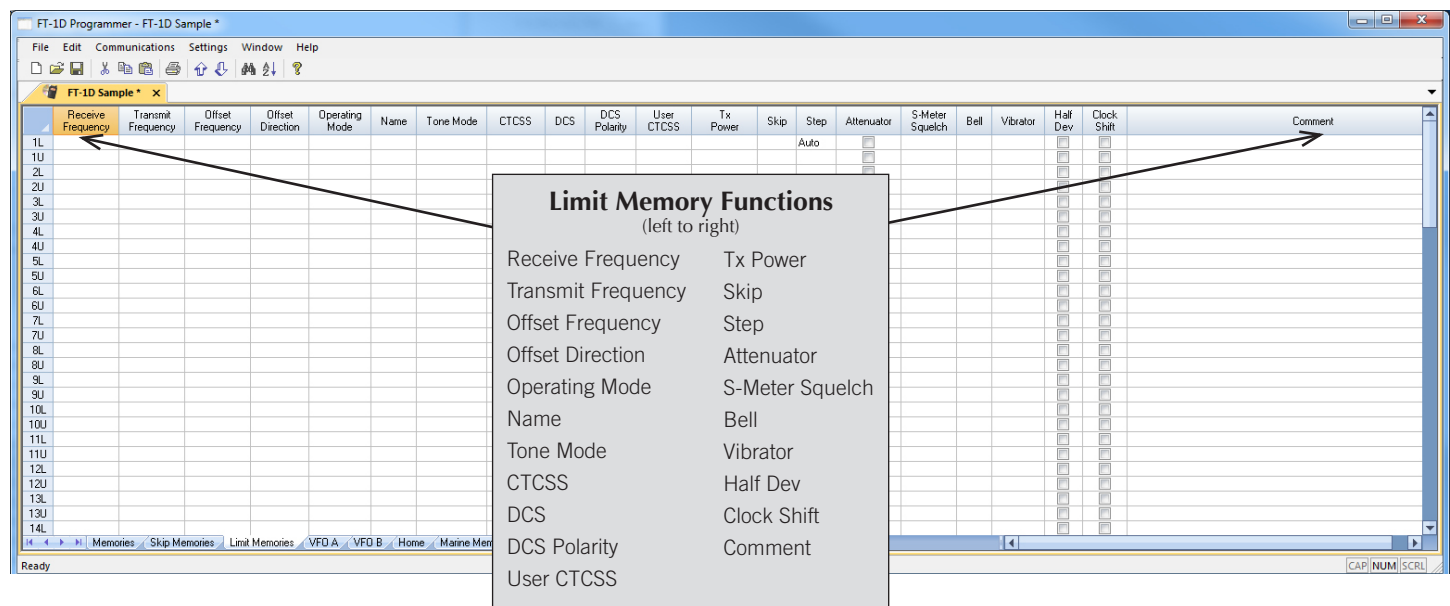
#### Hardware Requirements:

A PC running Windows XP, Vista, Windows 7 (32 or 64 bit) or Windows 8 (full version). A CD drive (local or network) for installation. A free USB port. The SCU-18 cable that came with your radio. The cable connects the radio to the computer from the USB port on the computer to the data jack on the radio.



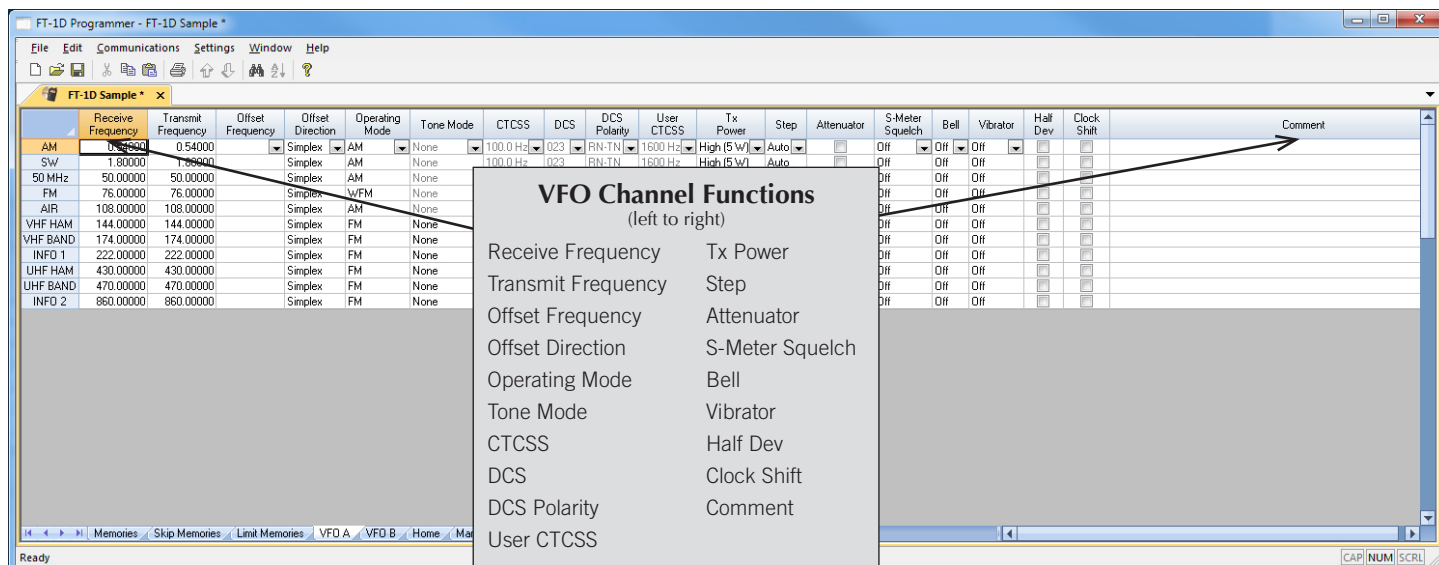
### Skip Memories

These frequencies are skipped during VFO scanning. These channels can be used for additional regular memory storage if you don't use VFO scanning.



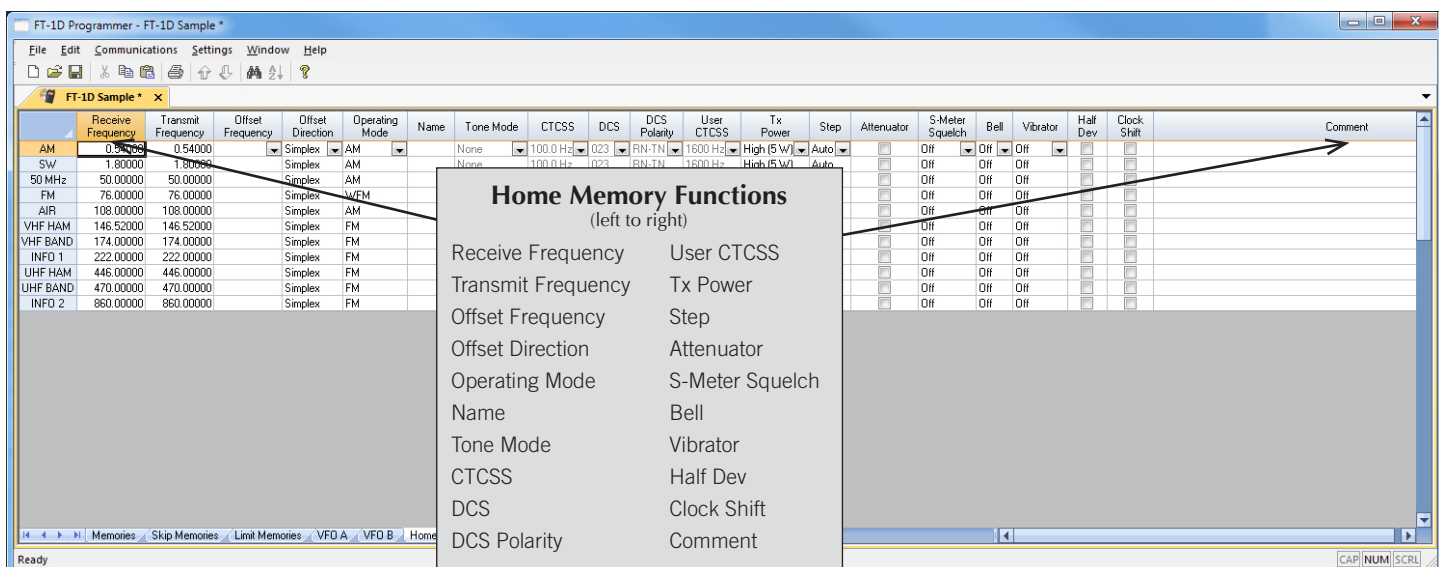
### Limit Memories

Limit Memories are used by the radio for Program Scan. Program the same details for Limit Memories as for regular memory channels.



## VFO A and B

The program makes available the same VFO's as in the radio (usually one per band). Remember these are not real memory channels since the details are lost as soon as you tune the radio manually. There is no one button recall for these. You do not need to program into VFO before programming details into a memory channel. These channels are preprogrammed in the radio and while the frequency can be changed to another within the band, they cannot be left blank.



## Home

Home/Call channels are special memories accessed through one button recall on the radio. These channels are preprogrammed in the radio and while the frequency can be changed to another within the band, they cannot be left blank.

FT-1D Programmer - FT-1D Sample \*

File Edit Communications Settings Window Help

FT-1D Sample \* x

|    | Receive Frequency | Transmit Frequency | Offset Direction | Skip | BANK 1 | BANK 2 | BANK 3 | BANK 4 | BANK 5 | BANK 6 | BANK 7 | BANK 8 | BANK 9 | BANK 10 | BANK 11 | BANK 12 | BANK 13 | BANK 22 | BANK 23 | BANK 24 | Comment |
|----|-------------------|--------------------|------------------|------|--------|--------|--------|--------|--------|--------|--------|--------|--------|---------|---------|---------|---------|---------|---------|---------|---------|
| 2  | 150               | 156.10000          | Split            | Off  |        |        |        |        |        |        |        |        |        |         |         |         |         |         |         |         |         |
| 3  | 160.75000         | 156.15000          | Split            | Off  |        |        |        |        |        |        |        |        |        |         |         |         |         |         |         |         |         |
| 4  | 160.80000         | 156.20000          | Split            | Off  |        |        |        |        |        |        |        |        |        |         |         |         |         |         |         |         |         |
| 5  | 160.85000         | 156.25000          | Split            | Off  |        |        |        |        |        |        |        |        |        |         |         |         |         |         |         |         |         |
| 6  | 156.30000         | 156.30000          | Simplex          | Off  |        |        |        |        |        |        |        |        |        |         |         |         |         |         |         |         |         |
| 7  | 160.95000         | 156.35000          | Split            | Off  |        |        |        |        |        |        |        |        |        |         |         |         |         |         |         |         |         |
| 8  | 156.40000         | 156.40000          | Simplex          | Off  |        |        |        |        |        |        |        |        |        |         |         |         |         |         |         |         |         |
| 9  | 156.45000         | 156.45000          | Simplex          | Off  |        |        |        |        |        |        |        |        |        |         |         |         |         |         |         |         |         |
| 10 | 156.50000         | 156.50000          | Simplex          | Off  |        |        |        |        |        |        |        |        |        |         |         |         |         |         |         |         |         |
| 11 | 156.55000         | 156.55000          | Simplex          | Off  |        |        |        |        |        |        |        |        |        |         |         |         |         |         |         |         |         |
| 12 | 156.60000         | 156.60000          | Simplex          | Off  |        |        |        |        |        |        |        |        |        |         |         |         |         |         |         |         |         |
| 13 | 156.65000         | 156.65000          | Simplex          | Off  |        |        |        |        |        |        |        |        |        |         |         |         |         |         |         |         |         |
| 14 | 156.70000         | 156.70000          | Simplex          | Off  |        |        |        |        |        |        |        |        |        |         |         |         |         |         |         |         |         |
| 15 | 156.75000         | 156.75000          | Simplex          | Off  |        |        |        |        |        |        |        |        |        |         |         |         |         |         |         |         |         |
| 16 | 156.80000         | 156.80000          | Simplex          | Off  |        |        |        |        |        |        |        |        |        |         |         |         |         |         |         |         |         |
| 17 | 156.85000         | 156.85000          | Simplex          | Off  |        |        |        |        |        |        |        |        |        |         |         |         |         |         |         |         |         |
| 18 | 161.50000         | 156.90000          | Split            | Off  |        |        |        |        |        |        |        |        |        |         |         |         |         |         |         |         |         |
| 19 | 161.55000         | 156.95000          | Split            | Off  |        |        |        |        |        |        |        |        |        |         |         |         |         |         |         |         |         |
| 20 | 161.60000         | 157.00000          | Split            | Off  |        |        |        |        |        |        |        |        |        |         |         |         |         |         |         |         |         |
| 21 | 161.65000         | 157.05000          | Split            | Off  |        |        |        |        |        |        |        |        |        |         |         |         |         |         |         |         |         |
| 22 | 161.70000         | 157.10000          | Split            | Off  |        |        |        |        |        |        |        |        |        |         |         |         |         |         |         |         |         |
| 23 | 161.75000         | 157.15000          | Split            | Off  |        |        |        |        |        |        |        |        |        |         |         |         |         |         |         |         |         |
| 24 | 161.80000         | 157.20000          | Split            | Off  |        |        |        |        |        |        |        |        |        |         |         |         |         |         |         |         |         |
| 25 | 161.85000         | 157.25000          | Split            | Off  |        |        |        |        |        |        |        |        |        |         |         |         |         |         |         |         |         |
| 26 | 161.90000         | 157.30000          | Split            | Off  |        |        |        |        |        |        |        |        |        |         |         |         |         |         |         |         |         |

Ready

Marine Memory Functions (left to right)

- Receive Frequency
- Transmit Frequency
- Offset Frequency
- Offset Direction
- Skip
- Bank 1 to 24
- Comment

## Marine Memories

Preprogrammed in the radio, the Marine Memories cannot be changed. Receive frequency, Transmit frequency and Offset direction are disabled to prevent editing. These channels can be included with other memories in Banks 1 - 24 by checking the box for that Bank.

FT-1D Programmer - FT-1D Sample \*

File Edit Communications Settings Window Help

FT-1D Sample \* x

|    | Receive Frequency | Name   | BANK 1 | BANK 2 | BANK 3 | BANK 4 | BANK 5 | BANK 6 | BANK 7 | BANK 8 | BANK 9 | BANK 10 | BANK 11 | BANK 12 | BANK 13 | BANK 14 | BANK 15 | BANK 16 | BANK 17 | BANK 18 | BANK 19 | BANK 20 | BANK 21 | BANK 22 | BANK 23 | BANK 24 | Comment |
|----|-------------------|--------|--------|--------|--------|--------|--------|--------|--------|--------|--------|---------|---------|---------|---------|---------|---------|---------|---------|---------|---------|---------|---------|---------|---------|---------|---------|
| 1  | 6.15000           | VQA    |        |        |        |        |        |        |        |        |        |         |         |         |         |         |         |         |         |         |         |         |         |         |         |         |         |
| 2  | 6.16000           | VQA    |        |        |        |        |        |        |        |        |        |         |         |         |         |         |         |         |         |         |         |         |         |         |         |         |         |
| 3  | 9.76000           | VQA    |        |        |        |        |        |        |        |        |        |         |         |         |         |         |         |         |         |         |         |         |         |         |         |         |         |
| 4  | 11.96000          | VQA    |        |        |        |        |        |        |        |        |        |         |         |         |         |         |         |         |         |         |         |         |         |         |         |         |         |
| 5  | 9.55500           | CANADA |        |        |        |        |        |        |        |        |        |         |         |         |         |         |         |         |         |         |         |         |         |         |         |         |         |
| 6  | 9.66000           | CANADA |        |        |        |        |        |        |        |        |        |         |         |         |         |         |         |         |         |         |         |         |         |         |         |         |         |
| 7  | 11.71500          | CANADA |        |        |        |        |        |        |        |        |        |         |         |         |         |         |         |         |         |         |         |         |         |         |         |         |         |
| 8  | 11.95500          | CANADA |        |        |        |        |        |        |        |        |        |         |         |         |         |         |         |         |         |         |         |         |         |         |         |         |         |
| 9  | 6.19500           | BBC    |        |        |        |        |        |        |        |        |        |         |         |         |         |         |         |         |         |         |         |         |         |         |         |         |         |
| 10 | 9.41000           | BBC    |        |        |        |        |        |        |        |        |        |         |         |         |         |         |         |         |         |         |         |         |         |         |         |         |         |
| 11 | 12.09500          | BBC    |        |        |        |        |        |        |        |        |        |         |         |         |         |         |         |         |         |         |         |         |         |         |         |         |         |
| 12 | 15.31000          | BBC    |        |        |        |        |        |        |        |        |        |         |         |         |         |         |         |         |         |         |         |         |         |         |         |         |         |
| 13 | 6.09000           | FRANCE |        |        |        |        |        |        |        |        |        |         |         |         |         |         |         |         |         |         |         |         |         |         |         |         |         |
| 14 | 9.79000           | FRANCE |        |        |        |        |        |        |        |        |        |         |         |         |         |         |         |         |         |         |         |         |         |         |         |         |         |
| 15 | 11.67000          | FRANCE |        |        |        |        |        |        |        |        |        |         |         |         |         |         |         |         |         |         |         |         |         |         |         |         |         |
| 16 | 15.19500          | FRANCE |        |        |        |        |        |        |        |        |        |         |         |         |         |         |         |         |         |         |         |         |         |         |         |         |         |
| 17 | 6.00000           | DW     |        |        |        |        |        |        |        |        |        |         |         |         |         |         |         |         |         |         |         |         |         |         |         |         |         |
| 18 | 6.07500           | DW     |        |        |        |        |        |        |        |        |        |         |         |         |         |         |         |         |         |         |         |         |         |         |         |         |         |
| 19 | 9.65000           | DW     |        |        |        |        |        |        |        |        |        |         |         |         |         |         |         |         |         |         |         |         |         |         |         |         |         |
| 20 | 9.73500           | DW     |        |        |        |        |        |        |        |        |        |         |         |         |         |         |         |         |         |         |         |         |         |         |         |         |         |
| 21 | 5.99000           | ITALY  |        |        |        |        |        |        |        |        |        |         |         |         |         |         |         |         |         |         |         |         |         |         |         |         |         |
| 22 | 9.57500           | ITALY  |        |        |        |        |        |        |        |        |        |         |         |         |         |         |         |         |         |         |         |         |         |         |         |         |         |
| 23 | 9.67500           | ITALY  |        |        |        |        |        |        |        |        |        |         |         |         |         |         |         |         |         |         |         |         |         |         |         |         |         |
| 24 | 17.78000          | ITALY  |        |        |        |        |        |        |        |        |        |         |         |         |         |         |         |         |         |         |         |         |         |         |         |         |         |
| 25 | 7.17000           | TURKEY |        |        |        |        |        |        |        |        |        |         |         |         |         |         |         |         |         |         |         |         |         |         |         |         |         |

Ready

SW Memory Functions (left to right)

- Receive Frequency
- Name
- Bank 1 to 24
- Comment

## SW Memories

Frequencies for shortwave listening are preprogrammed in the radio with a name identifier and cannot be changed. Receive frequency and Name are disabled to prevent editing. These channels can be included with other memories in Banks 1-24 by checking the box for that Bank.

FT-1D Programmer - FT-1D Sample \*

File

Edit

Communications

Settings

Window

Help

FT-1D Sample \*

|    | Receive Frequency | Name | Skip | BANK 1 | BANK 2 | BANK 3 | BANK 4 | BANK 5 | BANK 6 | BANK 7 | BANK 8 | BANK 9 | BANK10 | BANK11 | BANK12 | BANK13 | BANK14 | BANK15 | BANK16 | BANK17 | BANK18 | BANK19 | Comment |
|----|-------------------|------|------|--------|--------|--------|--------|--------|--------|--------|--------|--------|--------|--------|--------|--------|--------|--------|--------|--------|--------|--------|---------|
| 1  | 162.35000         |      | Off  |        |        |        |        |        |        |        |        |        |        |        |        |        |        |        |        |        |        |        |         |
| 2  | 162.40000         |      | Off  |        |        |        |        |        |        |        |        |        |        |        |        |        |        |        |        |        |        |        |         |
| 3  | 162.47500         |      | Off  |        |        |        |        |        |        |        |        |        |        |        |        |        |        |        |        |        |        |        |         |
| 4  | 162.42500         |      | Off  |        |        |        |        |        |        |        |        |        |        |        |        |        |        |        |        |        |        |        |         |
| 5  | 162.45000         |      | Off  |        |        |        |        |        |        |        |        |        |        |        |        |        |        |        |        |        |        |        |         |
| 6  | 162.50000         |      | Off  |        |        |        |        |        |        |        |        |        |        |        |        |        |        |        |        |        |        |        |         |
| 7  | 162.52500         |      | Off  |        |        |        |        |        |        |        |        |        |        |        |        |        |        |        |        |        |        |        |         |
| 8  | 161.65000         |      | Off  |        |        |        |        |        |        |        |        |        |        |        |        |        |        |        |        |        |        |        |         |
| 9  | 161.77500         |      | Off  |        |        |        |        |        |        |        |        |        |        |        |        |        |        |        |        |        |        |        |         |
| 10 | 163.27500         |      | Off  |        |        |        |        |        |        |        |        |        |        |        |        |        |        |        |        |        |        |        |         |

Weather Memory Functions

(left to right)

Receive Frequency

Bank 1 to 24

Name

Comment

Skip

Memories

Skip Memories

Limit Memories

VFO A

VFO B

Home

Marine Memories

SW Memories

Weather Memories

Ready

CAP|NUM|SCRL

### Weather Memories

Ten NOAA weather frequencies are preprogrammed in the radio and cannot be changed. Use this screen to edit Name, set Skip conditions and add a weather channel to a bank along with other memories.

Buy Now

Menu Settings for FT-1D - Untitled.rsf

File Tabs Help

Common 1 Common 2 Messages DTMF / Internet APRS APRS Beacon GPS Group Messaging

**Config**

☒ Auto Repeater Shift  
☐ Band Edge Beep  
☐ Busy Channel Lockout  
☒ A-Band Busy LED  
☒ B-Band Busy LED  
☒ Radio Busy LED  
☒ Home VFO  
☐ Time Signal Alarm

Auto Power Off: Off  
Rx Save: 0.2 seconds  
Beep Select: Key & Scan  
GPS Log: Off  
Lock: Dial + Key  
Monitor/TCall: Moni  
PTT Delay: Off

VFO Mode: Band  
A-Band Vibrator: Off  
B-Band Vibrator: Off  
Vibrator Mode: Mode 1

Timers  
Off: ☐ Enable 00:00  
On: ☐ Enable 00:00

**Display**

Band Scope: 33 channel  
Compass: Heading Up  
Dual/Mono: Dual Receive  
Lamp: 5 seconds  
Language: English  
LCD Contrast: Level 7  
LCD Dimmer: Level 6  
Target Location: Compass

S-Meter Symbol:

Call sign:

Memory  
☐ Protect Write: Next

Option  
USB Camera Size: 160 x 120  
USB Camera Quality: Low

### Common 1 and 2

Use these screens to customize many set menu features of the radio. Check boxes toggle features on or off, use drop down menus list all selections and blank boxes for personalized entry add to the ease of setting up your radio exactly like you want it.

The entries on the Settings screens are made for you to “Set and Forget”. Once settings are customized, you are prompted to save before exiting. The saved settings will be there every time you create a new frequency file.

Menu Settings for FT-1D - Untitled.rsf

File Tabs Help

Common 1 Common 2 Messages DTMF / Internet APRS APRS Beacon GPS Group Messaging

**Scan**

☒ Lamp  
Memory Scan Mode  
A-Band: All Channel  
B-Band: All Channel  
VFO Scan Mode  
A-Band: Band  
B-Band: Band  
DW Time: 5.0 seconds  
Restart Time: 2.0 seconds  
DW Resume: Hold  
Scan Resume: 5.0 seconds

**Signaling**

☒ Fast Tone Search  
☐ Split Tone  
☒ Tone Search Mute  
Bell Ringer: 1 Time  
Squelch Level  
A-Band: Level 1  
B-Band: Level 1  
AM Radio: Level 1  
FM Radio: Level 2  
Pager  
☐ Answer Back  
Receive Codes: 05 - 77.0 Hz 47 - 233.6 Hz  
Transmit Codes: 05 - 77.0 Hz 47 - 233.6 Hz  
Weather  
☐ Weather Alert  
Active Channel: 162.550 MHz

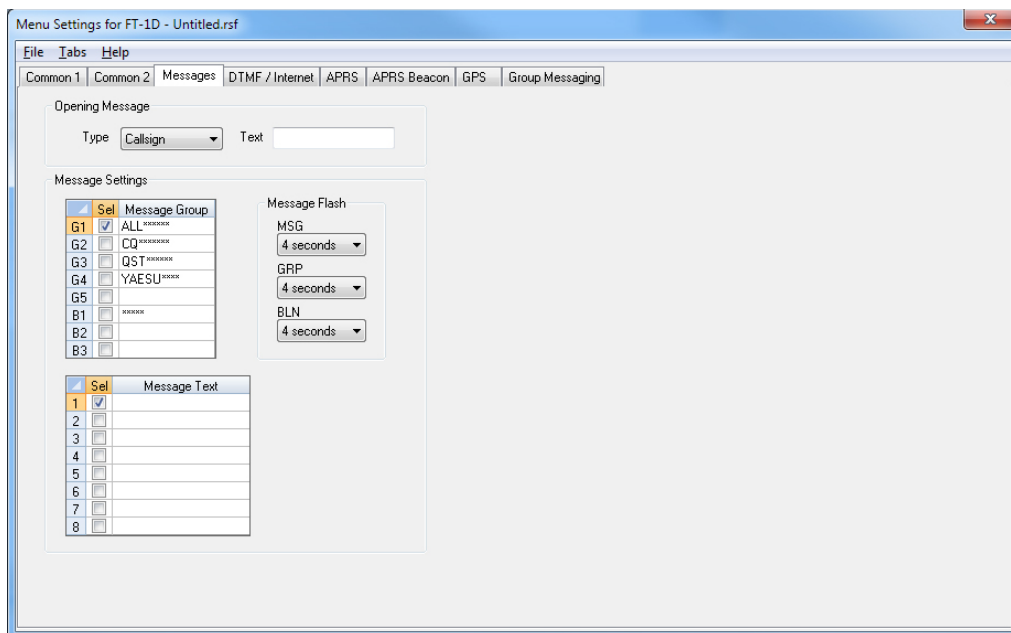
**Tx / Rx**

Audio  
Mic Gain: Level 5  
Mute Level: Off  
Rx AF Dual: Tx 2 secs  
Volume Key Mode: Normal  
Speaker Volume  
A-Band: 10  
B-Band: 10  
AM/FM Radio: 10

**Digital**

☒ Location Service  
Mode: Analog  
Tx Mode: DN  
Squelch Type: Off  
Squelch Code: 1  
Pop up Time: BND 10 secs  
Mode  
AM Antenna: Bar & Ext





Menu Settings for FT-1D - Untitled.rsf

File Tabs Help

Common 1 Common 2 Messages DTMF / Internet APRS APRS Beacon GPS Group Messaging

Opening Message

Type:  Text:

Message Settings

☒ Sel Message Group  
 G1 ☒ ALL  
 G2 ☐ CQ  
 G3 ☐ QST  
 G4 ☐ YAESU  
 G5 ☐  
 B1 ☐  
 B2 ☐  
 B3 ☐

Message Flash

MSG: 4 seconds

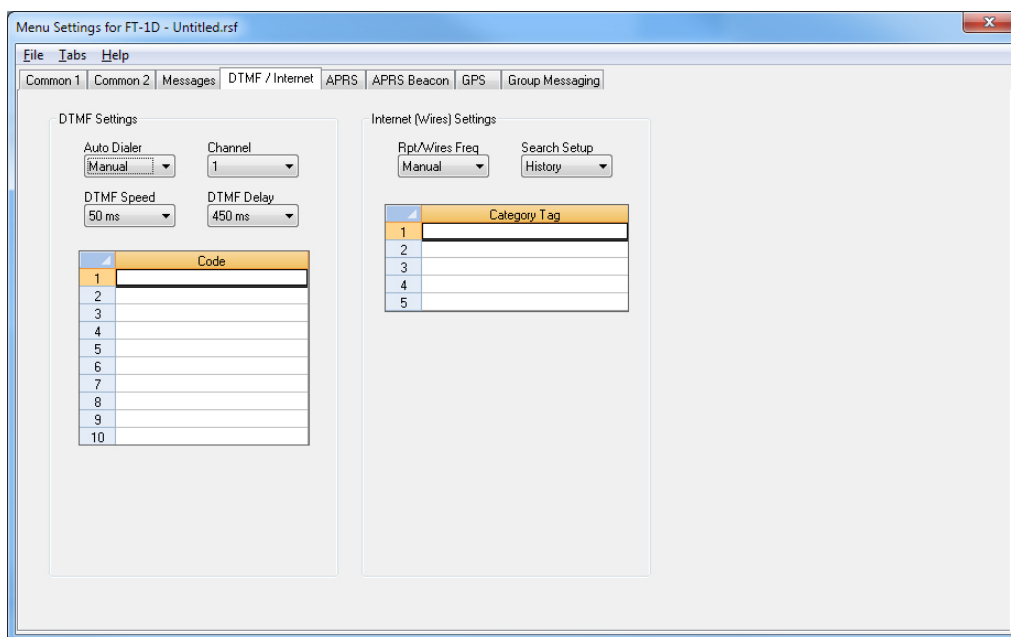
GRP: 4 seconds

BLN: 4 seconds

☒ Sel Message Text  
 1 ☒  
 2 ☐  
 3 ☐  
 4 ☐  
 5 ☐  
 6 ☐  
 7 ☐  
 8 ☐

### Messages

Set options for the Opening Message and text message details.



Menu Settings for FT-1D - Untitled.rsf

File Tabs Help

Common 1 Common 2 Messages DTMF / Internet APRS APRS Beacon GPS Group Messaging

DTMF Settings

Auto Dialer:  Channel:

DTMF Speed: 50 ms DTMF Delay: 450 ms

|    | Code |
|----|------|
| 1  |      |
| 2  |      |
| 3  |      |
| 4  |      |
| 5  |      |
| 6  |      |
| 7  |      |
| 8  |      |
| 9  |      |
| 10 |      |

Internet (Wires) Settings

Rpt/Wires Freq:  Search Setup:

|   | Category Tag |
|---|--------------|
| 1 |              |
| 2 |              |
| 3 |              |
| 4 |              |
| 5 |              |

### DTMF/Internet

Enter DTMF memory details and customize options for this function of the radio.

Menu Settings for FT-1D - Untitled.rsf

File Tabs Help

Common 1 Common 2 Messages DTMF / Internet APRS APRS Beacon GPS Group Messaging

Digi Path

☐ Off

☐ Wide1 -1 Digipeater

☒ Wide1 -1 Digipeater Wide2 -1 Digipeater

☐ Non Home Station

☐ Non Home Station

☐ Non Home Station

☐ Non Home Station

☐ Non Home Station

Edit

Com Port Settings

Input Output

Off Off

Speed Waypoint

9600 bps NMEA9

☐ Status ☒ POSIT

☒ Mic-E ☒ Weather

☒ Object ☒ Item

Units

Position MM.MM

Distance mile

Altitude feet

Temperature Fahrenheit

Rain inch

Wind mph

Speed mph

Misc

My Callsign Non

My Symbols

1 / Human/Person

2 /b Bicycle

3 /> Car

4 YY User

User Symbol Text YY

Modem Speed

Off

Position Comment

Off Duty

Tx Delay

300 ms

Time Zone

0:00

☐ AF Dual

☐ B Band Mute

Pop-Up

|           | Display Time |
|-----------|--------------|
| Mic-E     | All 10 secs  |
| Position  | All 10 secs  |
| Weather   | All 10 secs  |
| Object    | All 10 secs  |
| Item      | All 10 secs  |
| Status    | All 10 secs  |
| Other     | All 10 secs  |
| My Packet | All 10 secs  |
| Msg       | All 10 secs  |
| Grip      | All 10 secs  |

Ringer

|           | Enable                              |
|-----------|-------------------------------------|
| Mic-E     | <input checked="" type="checkbox"/> |
| Position  | <input checked="" type="checkbox"/> |
| Weather   | <input checked="" type="checkbox"/> |
| Object    | <input checked="" type="checkbox"/> |
| Item      | <input checked="" type="checkbox"/> |
| Status    | <input checked="" type="checkbox"/> |
| Other     | <input checked="" type="checkbox"/> |
| My Packet | <input checked="" type="checkbox"/> |
| Msg       | <input checked="" type="checkbox"/> |
| Grip      | <input checked="" type="checkbox"/> |

## APRS and APRS Beacon

Customize additional features of the FT-1D radio for advanced APRS functions.

Menu Settings for FT-1D - Untitled.rsf

File Tabs Help

Common 1 Common 2 Messages DTMF / Internet APRS APRS Beacon GPS Group Messaging

APRS Beaconsing

☐ Status Text Enable

Status Text Rate 1/1

|   | Beacon Status Text                  |
|---|-------------------------------------|
| 1 | <input checked="" type="checkbox"/> |
| 2 | <input type="checkbox"/>            |
| 3 | <input type="checkbox"/>            |
| 4 | <input type="checkbox"/>            |
| 5 | <input type="checkbox"/>            |

Beacon Transmit

Manual

Beacon Interval

5 minutes

Beacon Filter

☒ Mic E ☒ Item

☒ Position ☒ Speed/Course

☒ Weather ☐ Other

☒ Object ☐ ALTNET

Beacon Info

☒ Altitude ☒ Speed/Course

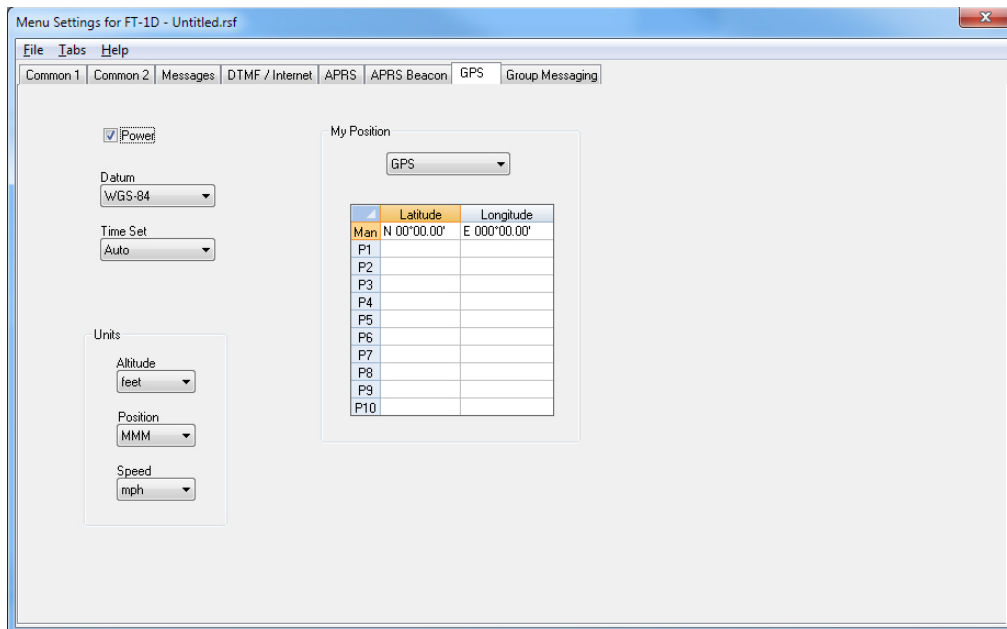
Ambiguity Off

Smart Beaconsing

Smart Beaconsing Off

|            | Type 1  | Type 2  | Type 3  | Limits   |
|------------|---------|---------|---------|----------|
| Low Speed  | 5 mph   | 3 mph   | 2 mph   | 2 ~ 30   |
| High Speed | 70 mph  | 30 mph  | 12 mph  | 3 ~ 90   |
| Slow Rate  | 30 min  | 30 min  | 30 min  | 1 ~ 100  |
| Fast Rate  | 120 sec | 120 sec | 120 sec | 10 ~ 180 |
| Turn Angle | 28 deg  | 28 deg  | 28 deg  | 5 ~ 90   |
| Turn Slope | 26      | 11      | 7       | 1 ~ 255  |
| Turn Time  | 30 sec  | 30 sec  | 30 sec  | 5 ~ 180  |





Menu Settings for FT-1D - Untitled.rsf

File Tabs Help

Common 1 Common 2 Messages DTMF / Internet APRS APRS Beacon GPS Group Messaging

☒ Power

Datum  
WGS-84

Time Set  
Auto

Units

Altitude  
feet

Position  
MMM

Speed  
mph

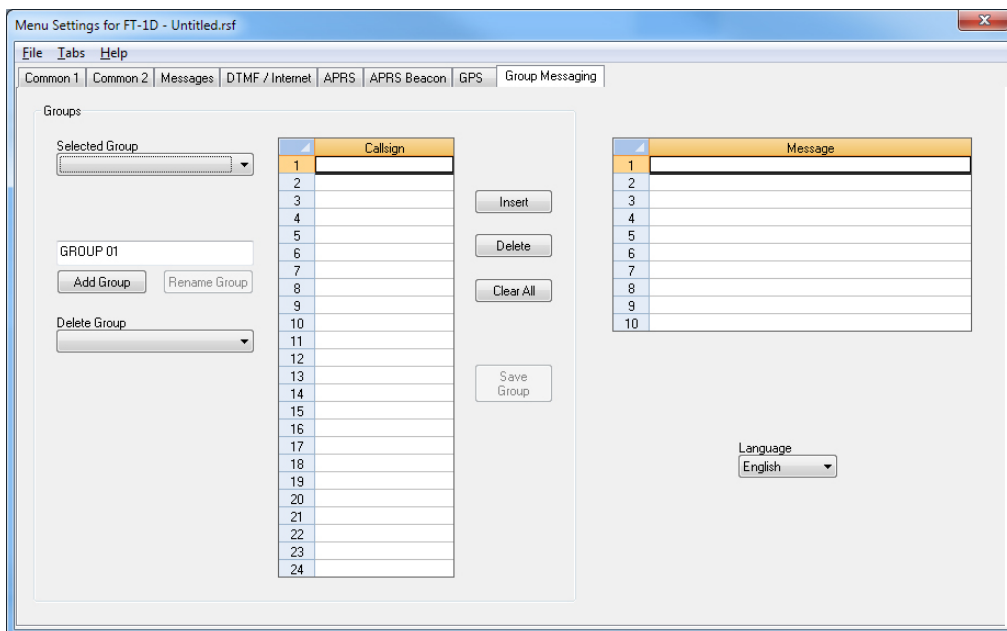
My Position

GPS

|     | Latitude    | Longitude    |
|-----|-------------|--------------|
| Man | N 00°00.00' | E 000°00.00' |
| P1  |             |              |
| P2  |             |              |
| P3  |             |              |
| P4  |             |              |
| P5  |             |              |
| P6  |             |              |
| P7  |             |              |
| P8  |             |              |
| P9  |             |              |
| P10 |             |              |

### GPS

Configure GPS function settings.



Menu Settings for FT-1D - Untitled.rsf

File Tabs Help

Common 1 Common 2 Messages DTMF / Internet APRS APRS Beacon GPS Group Messaging

Groups

Selected Group

GROUP 01

Add Group Rename Group

Delete Group

|    | Callsign |
|----|----------|
| 1  |          |
| 2  |          |
| 3  |          |
| 4  |          |
| 5  |          |
| 6  |          |
| 7  |          |
| 8  |          |
| 9  |          |
| 10 |          |
| 11 |          |
| 12 |          |
| 13 |          |
| 14 |          |
| 15 |          |
| 16 |          |
| 17 |          |
| 18 |          |
| 19 |          |
| 20 |          |
| 21 |          |
| 22 |          |
| 23 |          |
| 24 |          |

Insert

Delete

Clear All

Save Group

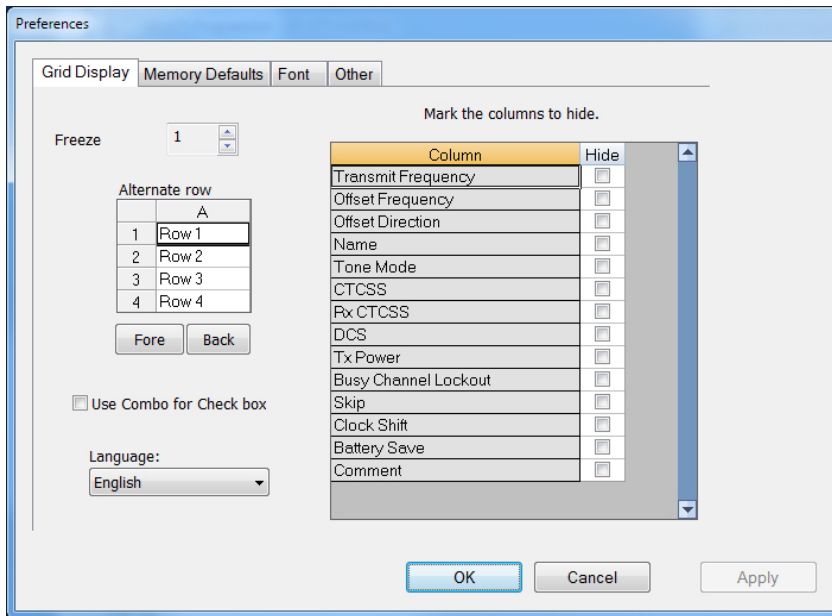
|    | Message |
|----|---------|
| 1  |         |
| 2  |         |
| 3  |         |
| 4  |         |
| 5  |         |
| 6  |         |
| 7  |         |
| 8  |         |
| 9  |         |
| 10 |         |

Language  
English

### Group Messaging

Configure options for group messaging.

Buy Now

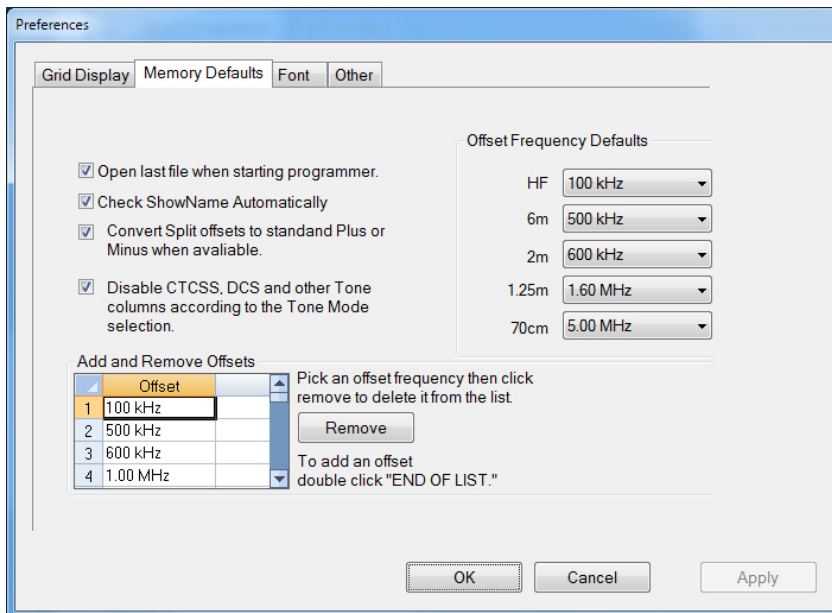


The screenshot shows the 'Grid Display' tab of the Preferences dialog. It includes a 'Freeze' spinner set to 1, an 'Alternate row' table with rows 1-4, 'Fore' and 'Back' buttons, a 'Use Combo for Check box' checkbox, and a 'Language' dropdown set to 'English'. A table titled 'Mark the columns to hide.' lists various fields with checkboxes for hiding them.

| Column               | Hide                     |
|----------------------|--------------------------|
| Transmit Frequency   | <input type="checkbox"/> |
| Offset Frequency     | <input type="checkbox"/> |
| Offset Direction     | <input type="checkbox"/> |
| Name                 | <input type="checkbox"/> |
| Tone Mode            | <input type="checkbox"/> |
| CTCSS                | <input type="checkbox"/> |
| Rx CTCSS             | <input type="checkbox"/> |
| DCS                  | <input type="checkbox"/> |
| Tx Power             | <input type="checkbox"/> |
| Busy Channel Lockout | <input type="checkbox"/> |
| Skip                 | <input type="checkbox"/> |
| Clock Shift          | <input type="checkbox"/> |
| Battery Save         | <input type="checkbox"/> |
| Comment              | <input type="checkbox"/> |

## Grid Display

- RT Systems now available in English, French, German, Italian, Spanish, Portuguese and Japanese.
- Set colors for text (Fore) or background (Back) of alternate rows for easier viewing across the columns.
- Freeze columns to keep information on the screen as you scroll to the right of the page.
- Hide columns you don't use. Customize your print-out: hidden columns do not print.
- Use Combo for Check boxes – changes the grid to eliminate check box selections that are disabled on some systems.

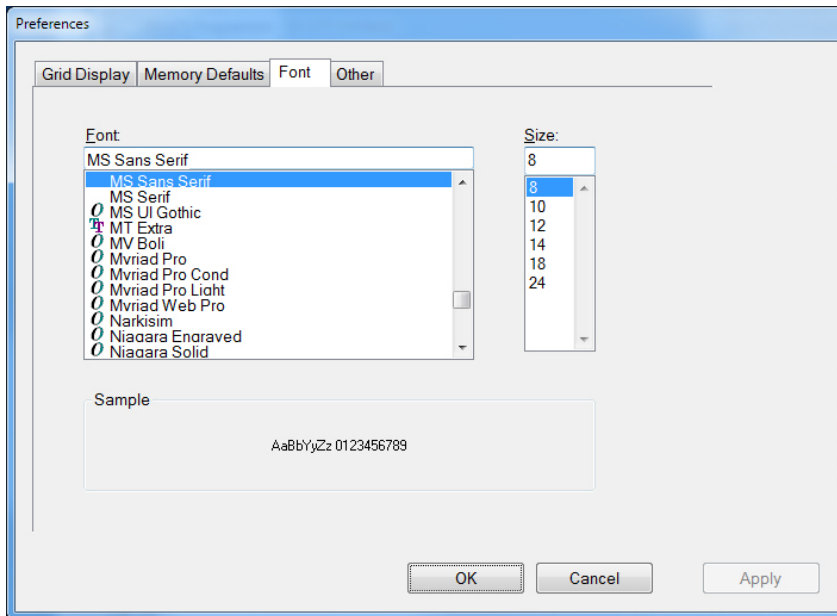


The screenshot shows the 'Memory Defaults' tab of the Preferences dialog. It includes checkboxes for 'Open last file when starting programmer', 'Check ShowName Automatically', 'Convert Split offsets to standard Plus or Minus when available', and 'Disable CTCSS, DCS and other Tone columns according to the Tone Mode selection'. It also features 'Offset Frequency Defaults' for HF, 6m, 2m, 1.25m, and 70cm bands, and an 'Add and Remove Offsets' table.

| Offset     |
|------------|
| 1 100 kHz  |
| 2 500 kHz  |
| 3 600 kHz  |
| 4 1.00 MHz |

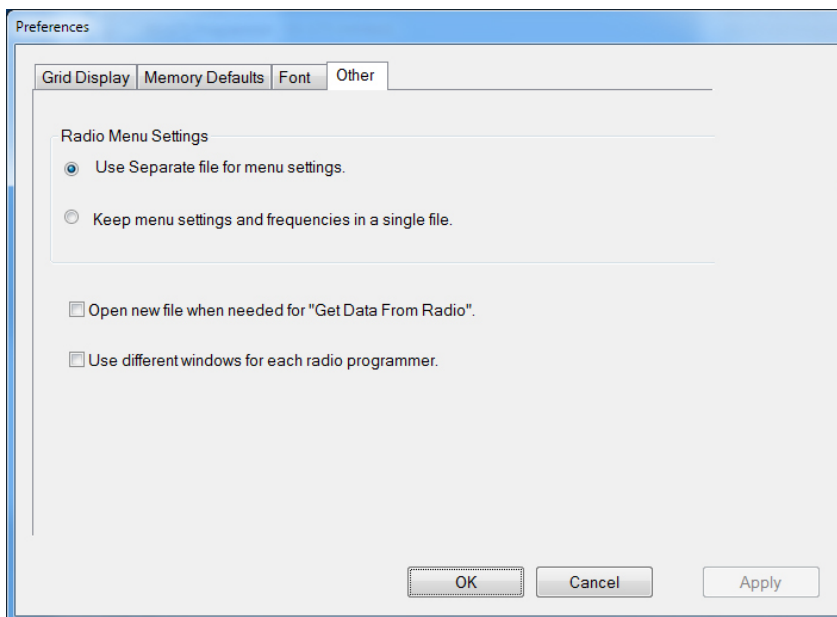
## Memory Defaults

- Set options to control auto fill information for memory channel entries.



#### Font

- Set options to control the font in the column headers of the channel entry screens. Select any font and font size available on your computer.



#### Other

- Set options to control how the programmer handles the global Radio Menu Settings file.
  - Separate (default) handles the global settings of the radio in a “set and forget” fashion. Once you set these up and save the file you won’t have to reset them for a new frequency file.
  - Together as one gives you the ability to create files that are complete with frequencies and customized global settings. In this mode, each file begins with factory defaults for every option of the radio.
- Check “Get data from Radio” new file option to prevent data loss when you read from your radio into the programmer.
- Check “different window” option to make the programmer for a different radio run in completely separate window rather than in a separate tab of the same window.

**Buy Now**