

The ADMS-FT2D Programmer is designed to give you the ease and convenience of programming the memories and set menu options of your radio from your PC.

Memory Channels Include:

- 900 Memory Channels
- 900 Skip Memories
- 100 Limit Memories (50 Pairs)
- 11 VFO A Channels
- 6 VFO B Channels
- 11 Home Channels
- 88 Marine Memories
- 89 SW Memories
- 10 Weather Memories

Other Menu Item Categories Include:

- Common 1
- Common 2
- Messages
- DTMF/Internet
- APRS
- APRS Beacon
- GPS
- Group Messaging

The Programmer Is for so Much More than Just Memory Management.



Hardware Requirements:

A PC running A PC running XP SP3 (32 or 64 bit), Windows 7 (32 or 64 bit), Windows 8 or 8.1 (full version) or Windows 10. Local USB port and RT Systems USB-68 interface cable (6' cable length). The cable connects the radio to the computer from the USB port on the computer to the mini USB connection on the radio. Internet connection for update at end of software installation.

With the ADMS-FT2D Programmer you can begin a new “factory fresh” file into which frequencies and option settings are entered. Or, you can read from the radio, store these details on your computer and make changes. Then, with minimal button pushing, send the new configuration back to the radio.

The Programmer allows you to create and save as many files as you want for your radio. Files can even be shared between users via email or the Internet.

Managing all the options of this great little radio becomes easy with the Programmer. The cut, copy, paste and insert features of the Programmer make channel management easier than ever.

Open more than one file at a time. Memory channel information can be copied from one file to another within the Programmer making it really easy to set up a new file.



Skip Memories
(left to right)

- Receive Frequency
- Transmit Frequency
- Offset Frequency
- Offset Direction
- Operating Mode
- Name
- Tone Mode
- CTCSS
- DCS
- DCS Polarity
- User CTCSS
- Tx Power
- Step
- Attenuator
- S-Meter Squelch
- Bell
- Vibrator
- Half Dev
- Clock Shift
- Comment

Skip Memories

These frequencies are skipped during VFO scanning. These channels can be used for additional regular memory storage if you don't use VFO scanning.

Limit Memories
(left to right)

- Receive Frequency
- Transmit Frequency
- Offset Frequency
- Offset Direction
- Operating Mode
- Name
- Tone Mode
- CTCSS
- DCS
- DCS Polarity
- User CTCSS
- Tx Power
- Skip
- Step
- Attenuator
- S-Meter Squelch
- Bell
- Vibrator
- Half Dev
- Clock Shift
- Comment

Limit Memories

Limit Memories are used by the radio for Program Scan. Program the same details for Limit Memories as for regular memory channels. Many of the Limit Memories are preprogrammed in the radio and while the frequency can be changed to another within the band, they cannot be left blank.

VFO A and VFO B Functions
(left to right)

Receive Frequency	Tx Power
Transmit Frequency	Step
Offset Frequency	Attenuator
Offset Direction	S-Meter Squelch
Operating Mode	Bell
Tone Mode	Vibrator
CTCSS	Half Dev
DCS	Clock Shift
DCS Polarity	Comment
User CTCSS	

VFO A and VFO B

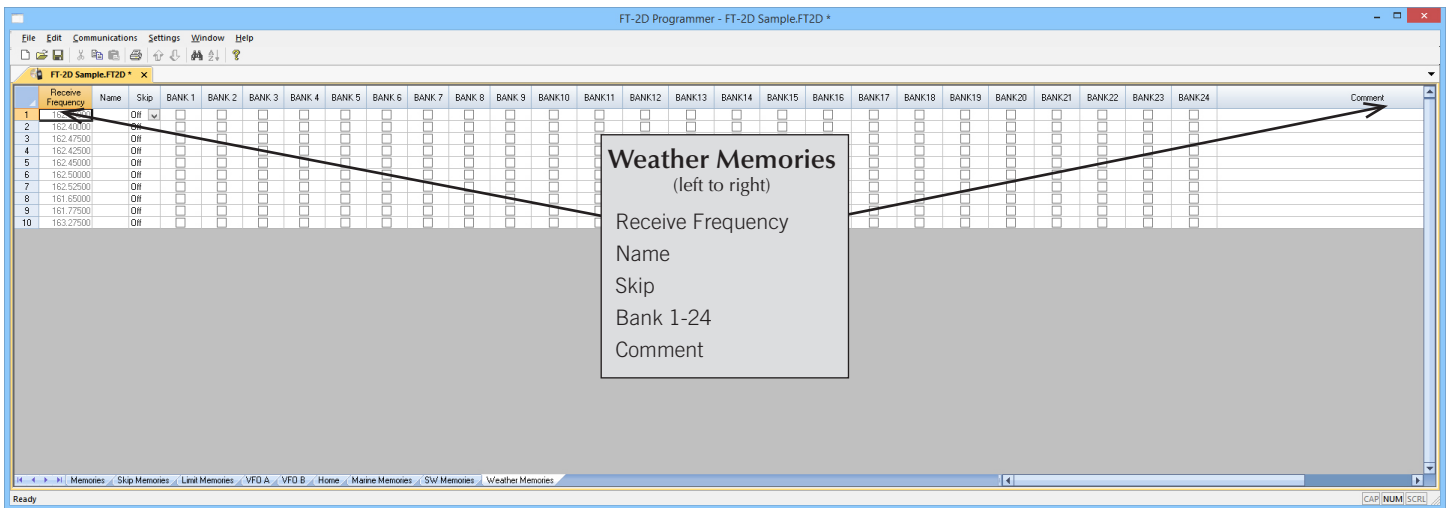
The program makes available the same VFO's as in the radio (usually one per band). Remember these are not real memory channels since the details are lost as soon as you tune the radio manually. There is no one button recall for these. You do not need to program into VFO before programming details into a memory channel. These channels are preprogrammed in the radio and while the frequency can be changed to another within the band, they cannot be left blank.

Home Channels
(left to right)

Receive Frequency	User CTCSS
Transmit Frequency	Tx Power
Offset Frequency	Step
Offset Direction	Attenuator
Operating Mode	S-Meter Squelch
Name	Bell
Tone Mode	Vibrator
CTCSS	Half Dev
DCS	Clock Shift
DCS Polarity	Comment

Home Channels

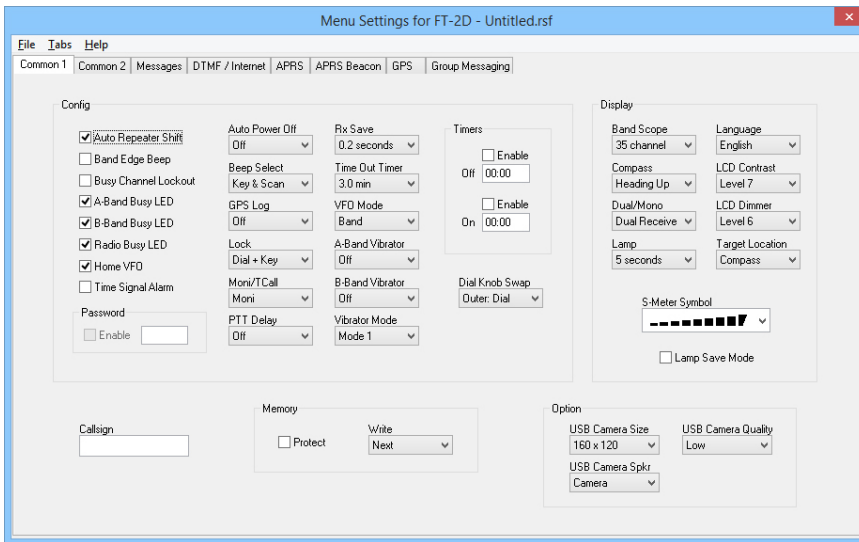
Home/Call channels are special memories accessed through one button recall on the radio. These channels are preprogrammed in the radio and while the frequency can be changed to another within the band, they cannot be left blank.



Weather Memories

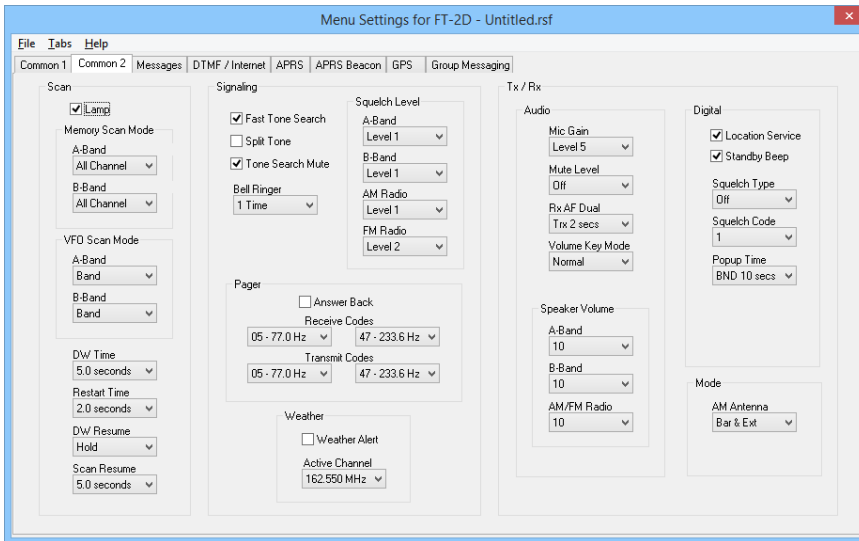
Ten NOAA weather frequencies are preprogrammed in the radio, and cannot be changed. Use this screen to edit Name, set Skip conditions and add a weather channel to a bank along with other memories.

[Buy Now](#)

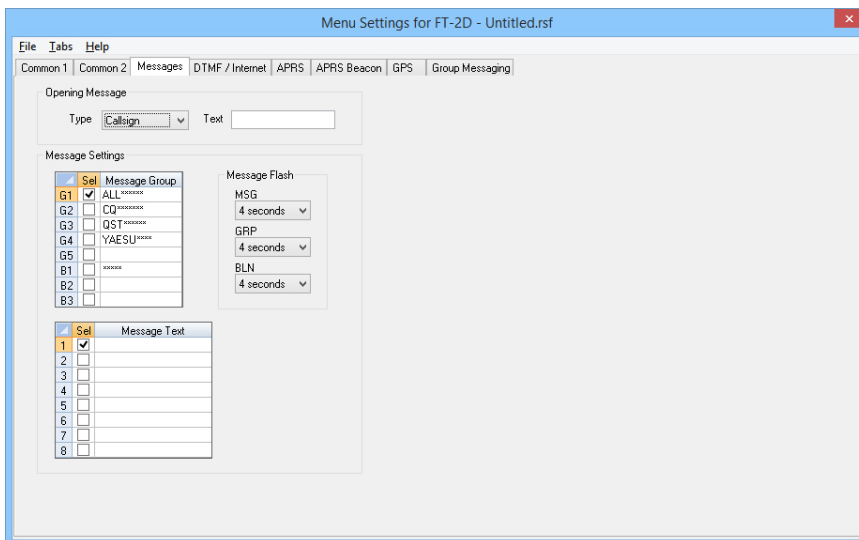


Common 1 and Common 2

Use these screens to customize other set menu features of the radio. Check boxes toggle features on or off, drop down menus list all selections and blank boxes for personalized entry add to the ease of setting up your radio exactly like you want it.

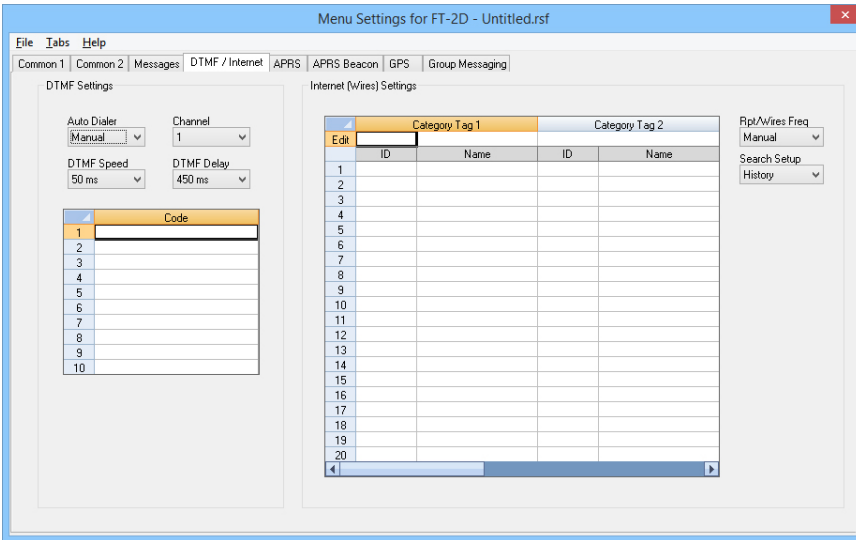


The entries on the Settings screens are made for you to “Set and Forget”. Once settings are customized, you are prompted to save before exiting. The saved settings will be there every time you create a new frequency file.



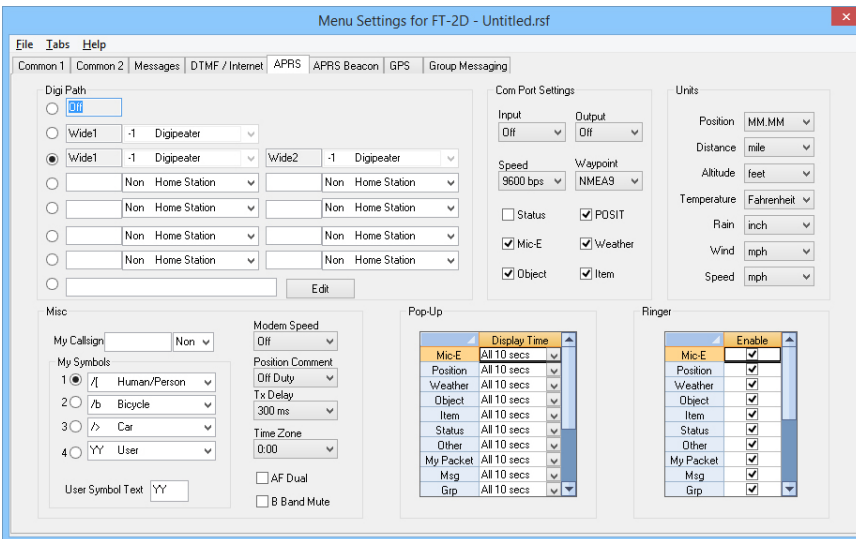
Messages

Set options for the Opening Message and text message details.



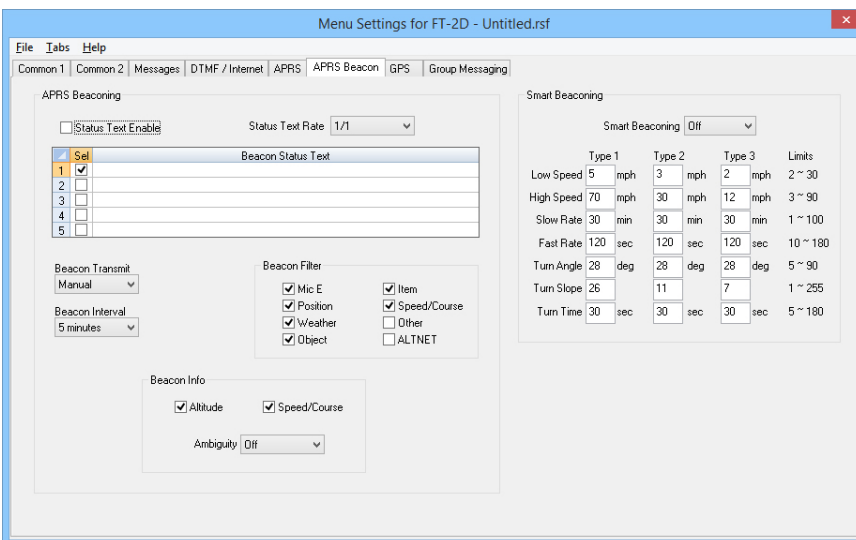
DTMF/ Internet

Enter DTMF and Internet (wires) memory details to customize options for the functions of the radio.



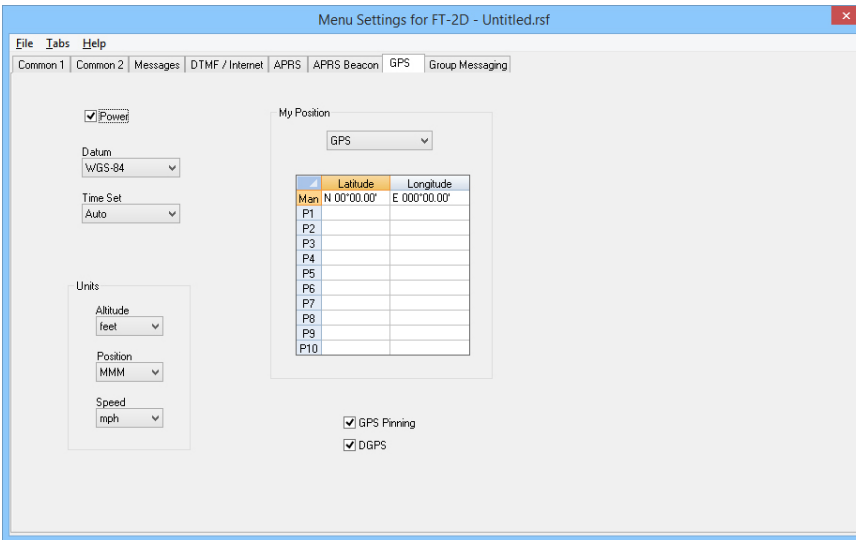
APRS

With so many set menu items controlling this advanced function of the radio, the settings file has three screens to hold the check boxes, drop-down lists and edit boxes.

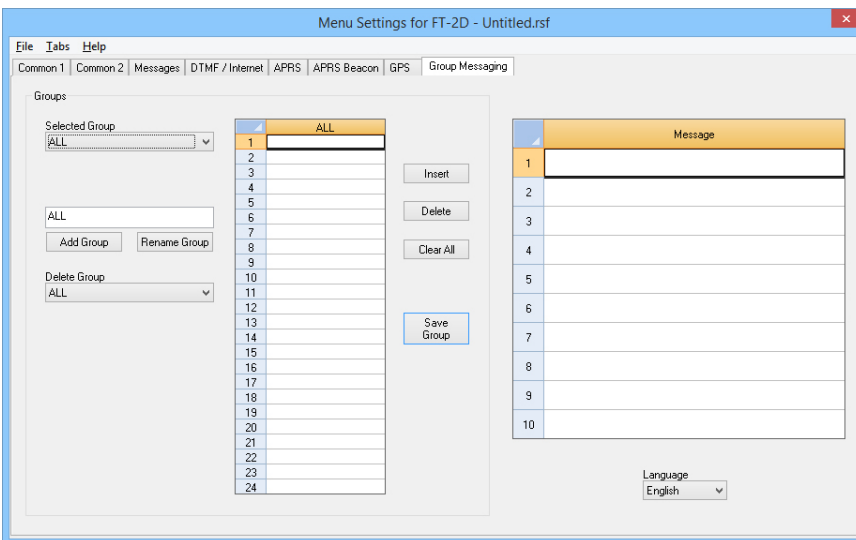


APRS Beacon

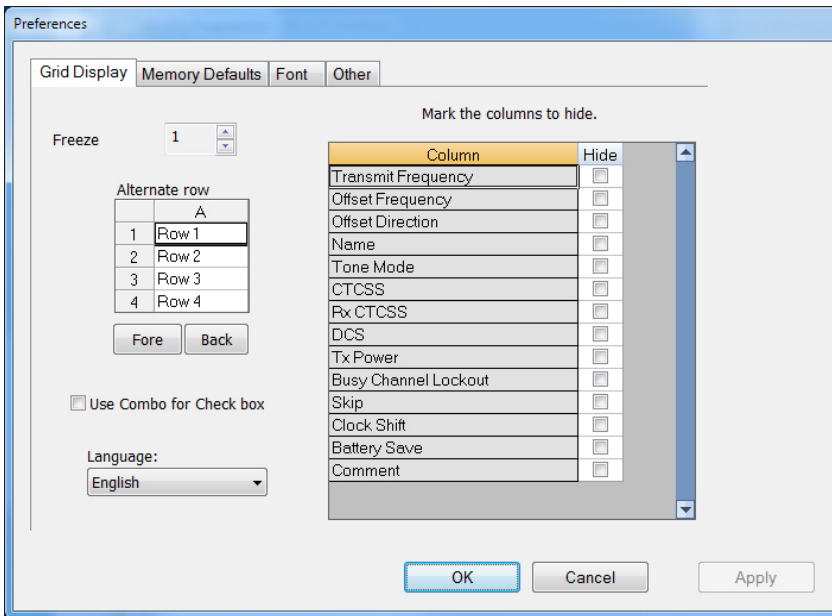
Customize additional features of the FT-2D model radio for advanced APRS functions.



GPS
 Configure GPS function settings.

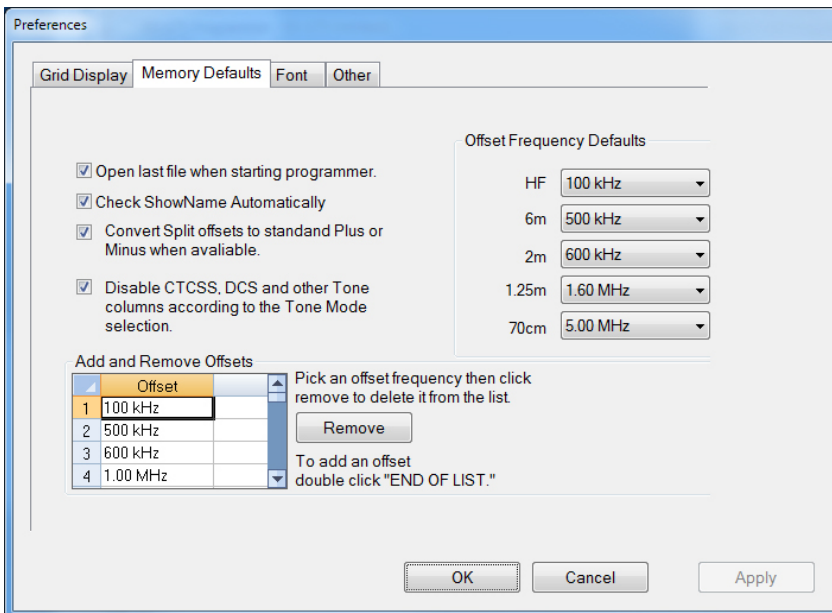


Group Messaging
 Set options and messages for Group Monitor functions.



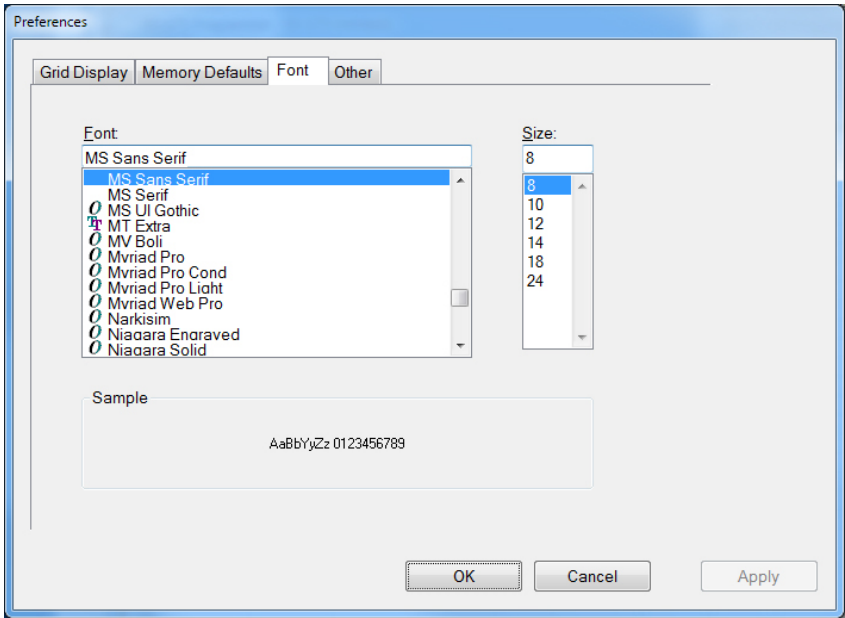
Grid Display

- RT Systems now available in English, French, German, Italian, Spanish, Portuguese and Japanese.
- Set colors for text (Fore) or background (Back) of alternate rows for easier viewing across the columns.
- Freeze columns to keep information on the screen as you scroll to the right of the page.
- Hide columns you don't use. Customize your print-out: hidden columns do not print.
- Use Combo for Check boxes – changes the grid to eliminate check box selections that are disabled on some systems.



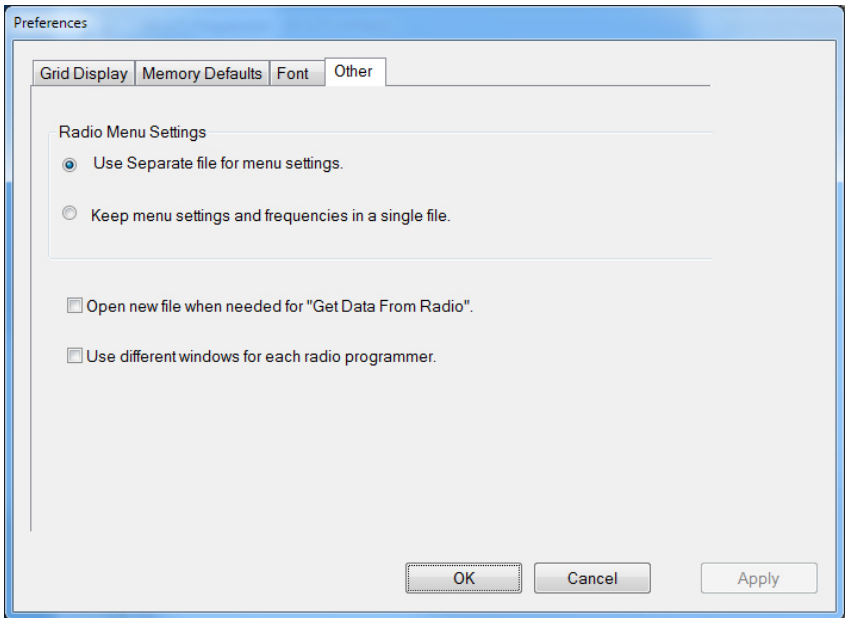
Memory Defaults

- Set options to control auto fill information for memory channel entries.



Font

- Set options to control the font in the column headers of the channel entry screens. Select any font and font size available on your computer.



Other

- Set options to control how the programmer handles the global Radio Menu Settings file.
 - Separate (default) handles the global settings of the radio in a “set and forget” fashion. Once you set these up and save the file you won’t have to reset them for a new frequency file.
 - “Single file” gives you the ability to create files that are complete with frequencies and customized global settings. In this mode, each file begins with factory defaults for every option of the radio.
- Check “Get data from Radio” new file option to prevent data loss when you read from your radio into the programmer.
- Check “different window” option to make the programmer for a different radio run in completely separate window rather than in a separate tab of the same window.

Buy Now