

The ADMS-VX5 Programmer is designed to give you the ease and convenience of programming the memories and set menu options of your radio from your PC.

Memory Channels Include:

- 220 Memory Channels
- 20 Limit Memories (10 pair)
- 10 VFO A Memories
- 10 VFO B Memories
- 10 Home Memories

Other Menu Item Categories Include:

- Common
- DTMF and Wx
- Icon Select

The Programmer Is for so Much More than Just Memory Management.

With the ADMS-VX5 Programmer you can begin a new “factory fresh” file into which frequencies and option settings are entered. Or, you can read from the radio, store these details on your computer and make changes. Then, with minimal button pushing, send the new configuration back to the radio.

The Programmer allows you to create and save as many files as you want for your radio. Files can even be shared between users via email or the Internet. Any RT Systems Version 4.50 program can open a file from any other RT Systems Version 4.50 programmer... even from a different radio.

Managing all the options of this great little radio becomes easy with the Programmer. The cut, copy, paste and insert features of the Programmer make channel management easier than ever.

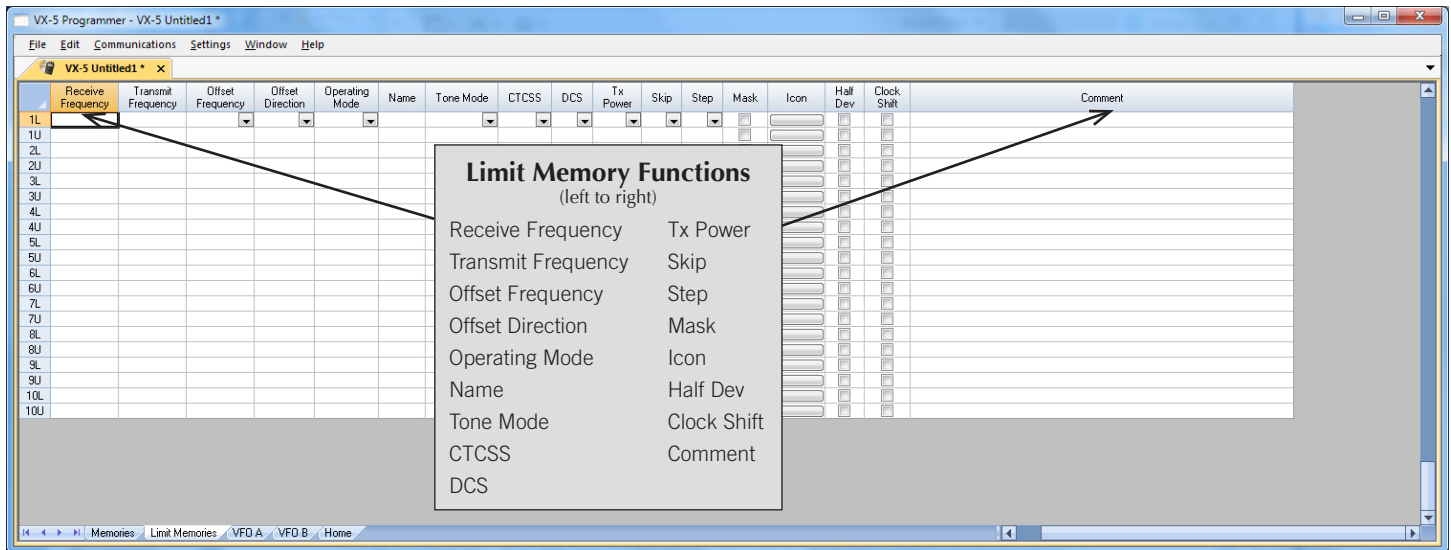
Open more than one file at a time. Memory channel information can be copied from one file to another within the Programmer making it really easy to set up a new file.



Hardware Requirements:

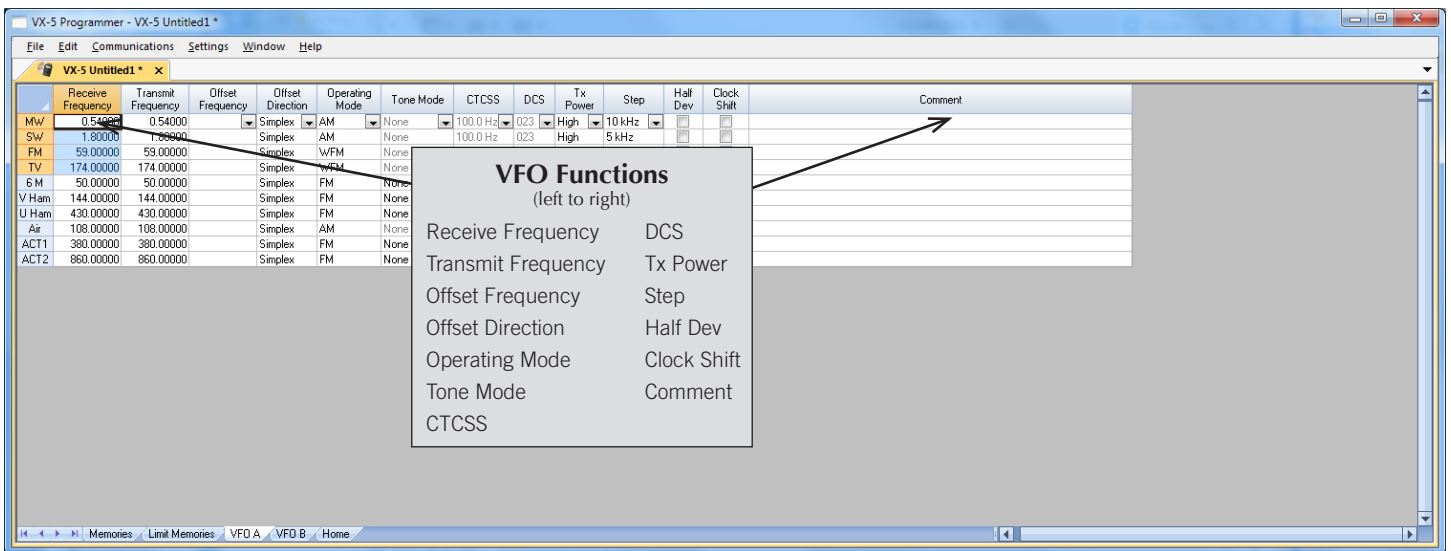
A PC running Windows XP, Vista, Windows 7 (32 or 64 bit) or Windows 8 (full version). A CD drive (local or network) for installation. A free USB port. The RT Systems USB-57A interface cable. The cable connects the radio to the computer from the USB port on the computer to the speaker/mic jack on the radio.





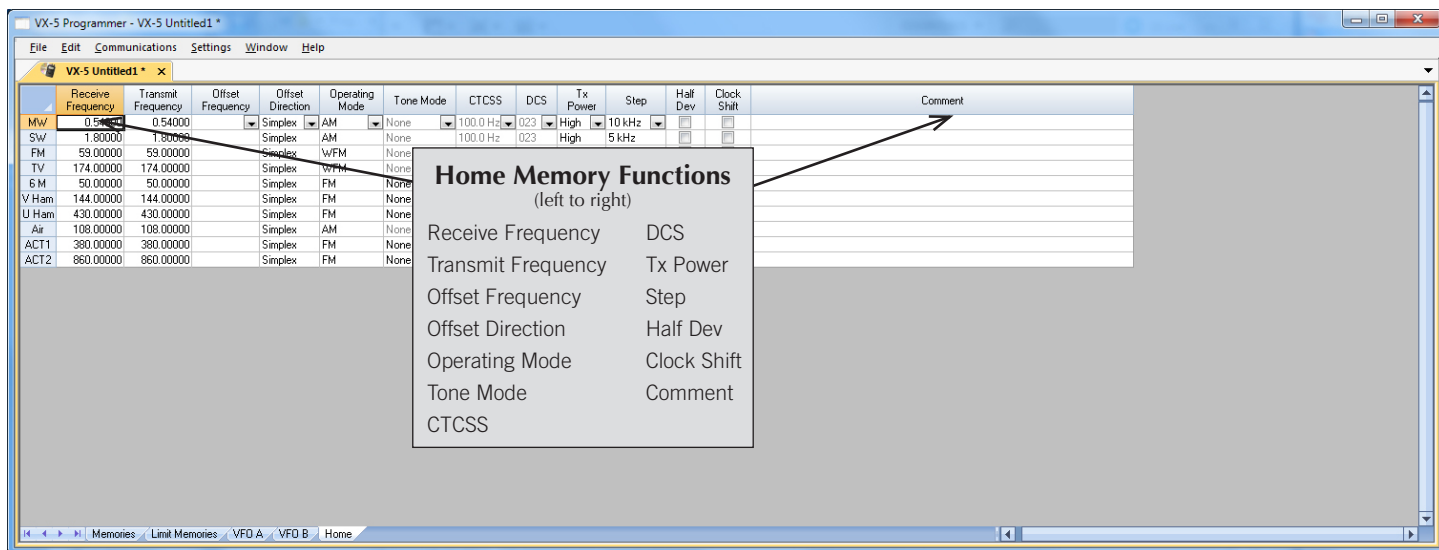
Limit Memories

Limit Memories are used by the radio for Program Scan. Program the same details for Limit Memories as for regular memory channels. Many of the Limit Memories are preprogrammed in the radio and while the frequency can be changed to another within the band, they cannot be left blank.



VFO A and B

The program makes available the same VFO's as in the radio (usually one per band). Remember these are not real memory channels since the details are lost as soon as you tune the radio manually. There is no one button recall for these. You do not need to program into VFO before programming details into a memory channel. These channels are preprogrammed in the radio and while the frequency can be changed to another within the band, they cannot be left blank.



Home

Home/Call channels are special memories accessed through one button recall on the radio. These channels are preprogrammed in the radio and while the frequency can be changed to another within the band, they cannot be left blank.

Buy Now

Menu Settings for VX-5 - Untitled.rsf

File Tabs Help

Common DTMF and Wx Icon Select

☒ Auto Receive Mode
☒ Auto Repeater Shift
☐ Band Edge Beep
☐ Busy Carrier Lockout
☒ Busy LED
☒ Keypad Beep
☐ Lock Enabled
☒ Scan Lamp
☐ Tx Save
☒ VFO Band Edge

Auto Power Off
Off

Bell Ringer
Off

Contrast
5

Home/Rev
Reverse

Lamp
Key

Language
English

Lock Setting
Key

Moni/TCall
Moni

On Timer
Off

Power off Display
None

Rx Save
200 ms (1:1)

Scan Mode
5 Sec

Smart Search
Single

Spectrum Anyt
Single

Squelch FM
Level 1

Squelch Wide FM
Level 2

Transmit Timeout
2.5 Min

SU-1 Offsets
Offset Value

Barometric
0

Altimeter
0

ARTS
CW ID Text
CW ID
Off

ARTS Beep
In Range

ARTS Interval
25 sec

Common

Use these screens to customize other set menu features of the radio. Check boxes toggle features on or off, drop down menus list all selections and blank boxes for personalized entry add to the ease of setting up your radio exactly like you want it.

The entries on the Settings screens are made for you to "Set and Forget". Once settings are customized, you are prompted to save before exiting. The saved settings will be there every time you create a new frequency file.

Menu Settings for VX-5 - Untitled.rsf

File Tabs Help

Common DTMF and Wx Icon Select

DTMF Settings

	DTMF
1	
2	
3	
4	
5	
6	
7	
8	
9	

☐ Enable DTMF Mode

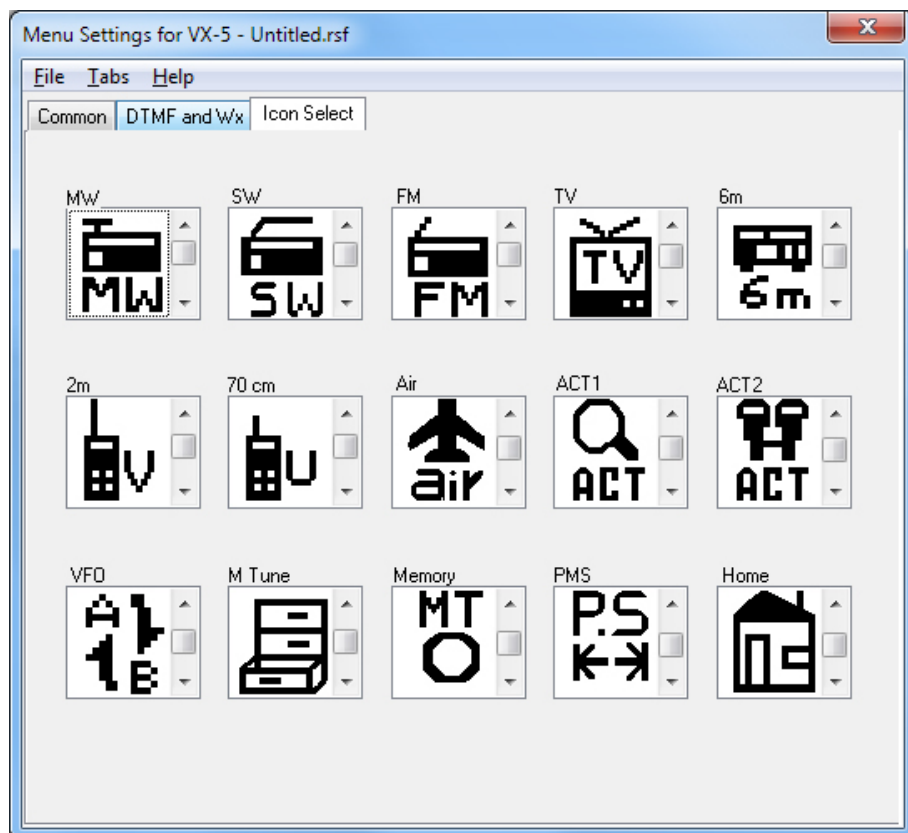
☐ Use * for E and # for F

Weather Channel Names

	Name
1	
2	
3	
4	
5	
6	
7	
8	
9	
10	

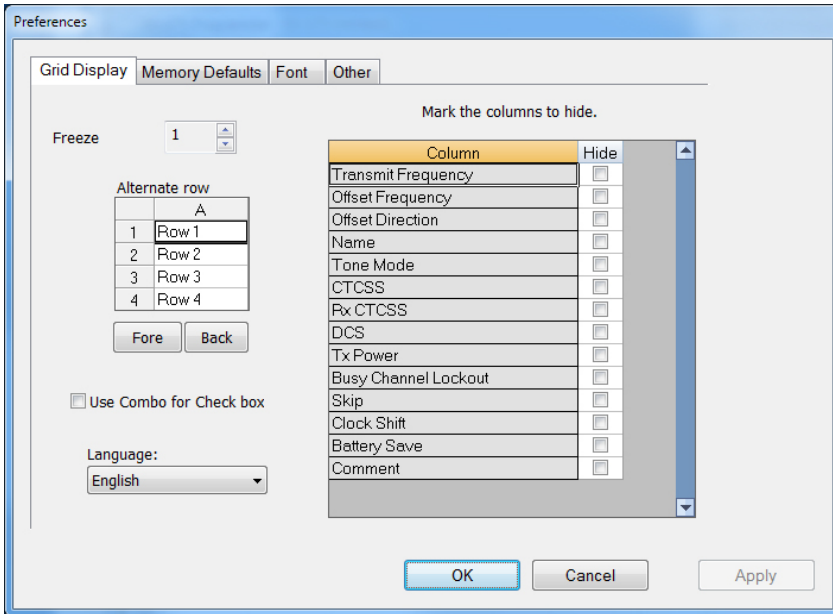
DTMF and Wx

Enter DTMF memory and Wx details and customize options for this function of the radio.



Icon Select

Select icons to use on the face of the radio.

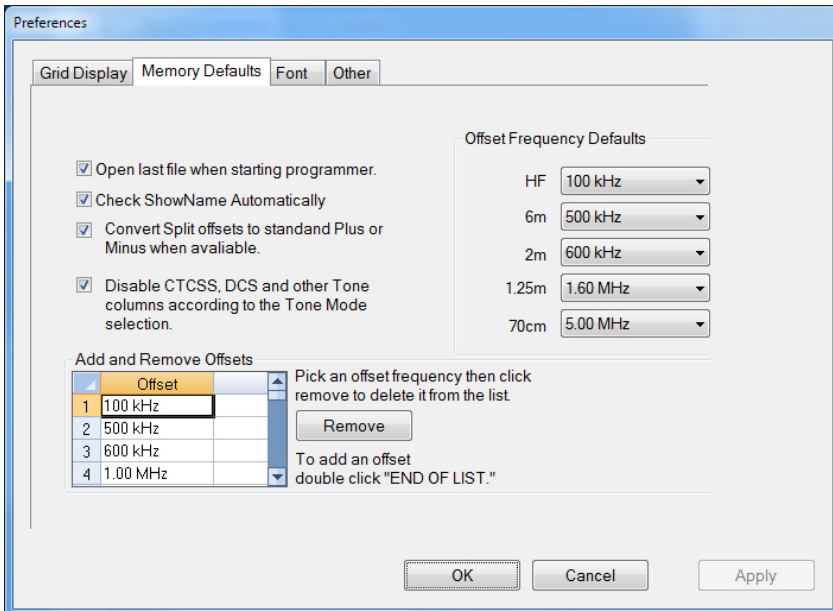


The screenshot shows the 'Grid Display' tab of the Preferences dialog. It includes a 'Freeze' spinner set to 1, an 'Alternate row' table with rows 1-4, 'Fore' and 'Back' buttons, a 'Use Combo for Check box' checkbox, a 'Language' dropdown set to 'English', and a table to 'Mark the columns to hide'.

Column	Hide
Transmit Frequency	<input type="checkbox"/>
Offset Frequency	<input type="checkbox"/>
Offset Direction	<input type="checkbox"/>
Name	<input type="checkbox"/>
Tone Mode	<input type="checkbox"/>
CTCSS	<input type="checkbox"/>
Rx CTCSS	<input type="checkbox"/>
DCS	<input type="checkbox"/>
Tx Power	<input type="checkbox"/>
Busy Channel Lockout	<input type="checkbox"/>
Skip	<input type="checkbox"/>
Clock Shift	<input type="checkbox"/>
Battery Save	<input type="checkbox"/>
Comment	<input type="checkbox"/>

Grid Display

- RT Systems now available in English, French, German, Italian, Spanish, Portuguese and Japanese.
- Set colors for text (Fore) or background (Back) of alternate rows for easier viewing across the columns.
- Freeze columns to keep information on the screen as you scroll to the right of the page.
- Hide columns you don't use. Customize your print-out: hidden columns do not print.
- Use Combo for Check boxes – changes the grid to eliminate check box selections that are disabled on some systems.

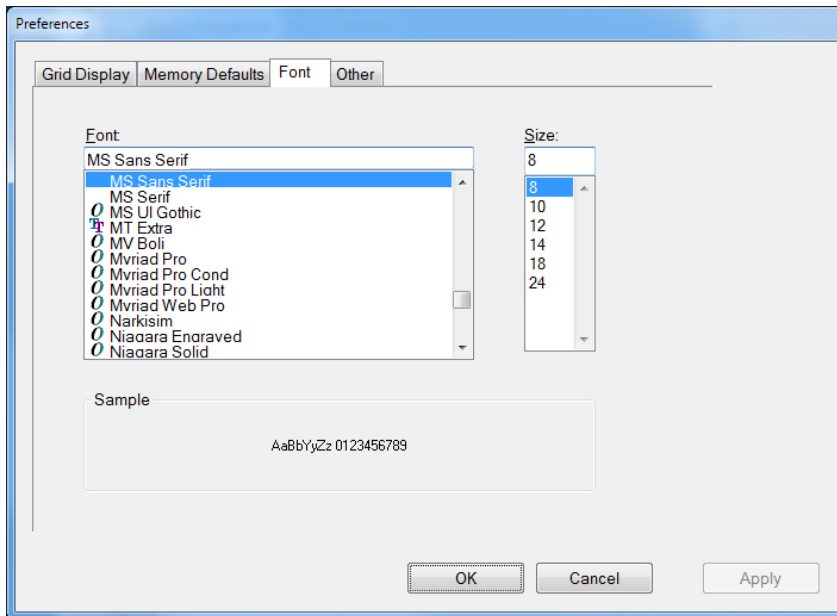


The screenshot shows the 'Memory Defaults' tab of the Preferences dialog. It includes checkboxes for 'Open last file when starting programmer', 'Check ShowName Automatically', 'Convert Split offsets to standard Plus or Minus when available', and 'Disable CTCSS, DCS and other Tone columns according to the Tone Mode selection'. It also features 'Offset Frequency Defaults' dropdowns for HF, 6m, 2m, 1.25m, and 70cm bands, and an 'Add and Remove Offsets' table.

Offset
1 100 kHz
2 500 kHz
3 600 kHz
4 1.00 MHz

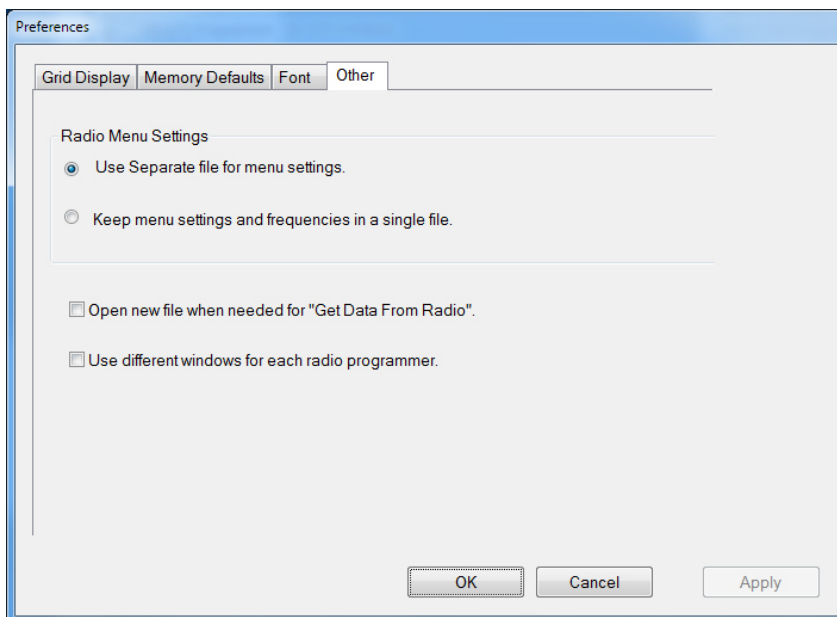
Memory Defaults

- Set options to control auto fill information for memory channel entries.



Font

- Set options to control the font in the column headers of the channel entry screens. Select any font and font size available on your computer.



Other

- Set options to control how the programmer handles the global Radio Menu Settings file.
 - Separate (default) handles the global settings of the radio in a “set and forget” fashion. Once you set these up and save the file you won’t have to reset them for a new frequency file.
 - Together as one gives you the ability to create files that are complete with frequencies and customized global settings. In this mode, each file begins with factory defaults for every option of the radio.
- Check “Get data from Radio” new file option to prevent data loss when you read from your radio into the programmer.
- Check “different window” option to make the programmer for a different radio run in completely separate window rather than in a separate tab of the same window.

Buy Now