

The ADMS-VX8G Programmer is designed to give you the ease and convenience of programming the memories and set menu options of your radio from your PC.

#### Memory Channels Include:

- 900 Memory Channels
- 999 Skip Memories
- 100 Limit Memories (50 pair)
- 1 EAI Memory
- 7 VFO A Channels
- 6 VFO B Channels
- 6 Home Memories
- 88 Marine Memories
- 10 Weather Memories

#### Other Menu Item Categories Include:

- Common
- ARTS/CW/EAI
- Messages
- Sounds
- DTMF/Internet
- VFO and Menu Skip
- APRS/GPS
- APRS Beacon

### *The Programmer Is for so Much More than Just Memory Management.*

With the ADMS-VX8G Programmer you can begin a new “factory fresh” file into which frequencies and option settings are entered. Or, you can read from the radio, store these details on your computer and make changes. Then, with minimal button pushing, send the new configuration back to the radio.

The Programmer allows you to create and save as many files as you want for your radio. Files can even be shared between users via email or the Internet. Any RT Systems Version 4.50 program can open a file from any other RT Systems Version 4.50 programmer... even from a different radio.

Managing all the options of this great little radio becomes easy with the Programmer. The cut, copy, paste and insert features of the Programmer make channel management easier than ever.

Open more than one file at a time. Memory channel information can be copied from one file to another within the Programmer making it really easy to set up a new file.



#### Hardware Requirements:

A PC running Windows XP, Vista, Windows 7 (32 or 64 bit) or Windows 8 (full version). A CD drive (local or network) for installation. A free USB port. The RT Systems USB-82 interface cable. The cable connects the radio to the computer from the USB port on the computer to the data jack on the radio.



**Skip Memory Functions**  
 (left to right)

Receive Frequency	Tx Power
Transmit Frequency	Step
Offset Frequency	Mask
Offset Direction	Attenuator
Operating Mode	Internet
Name	S-Meter Squelch
Tone Mode	Bell
CTCSS	Half Dev
DCS	Clock Shift
DCS Polarity	Bank 1 to 24
User CTCSS	Comment

### Skip Memories

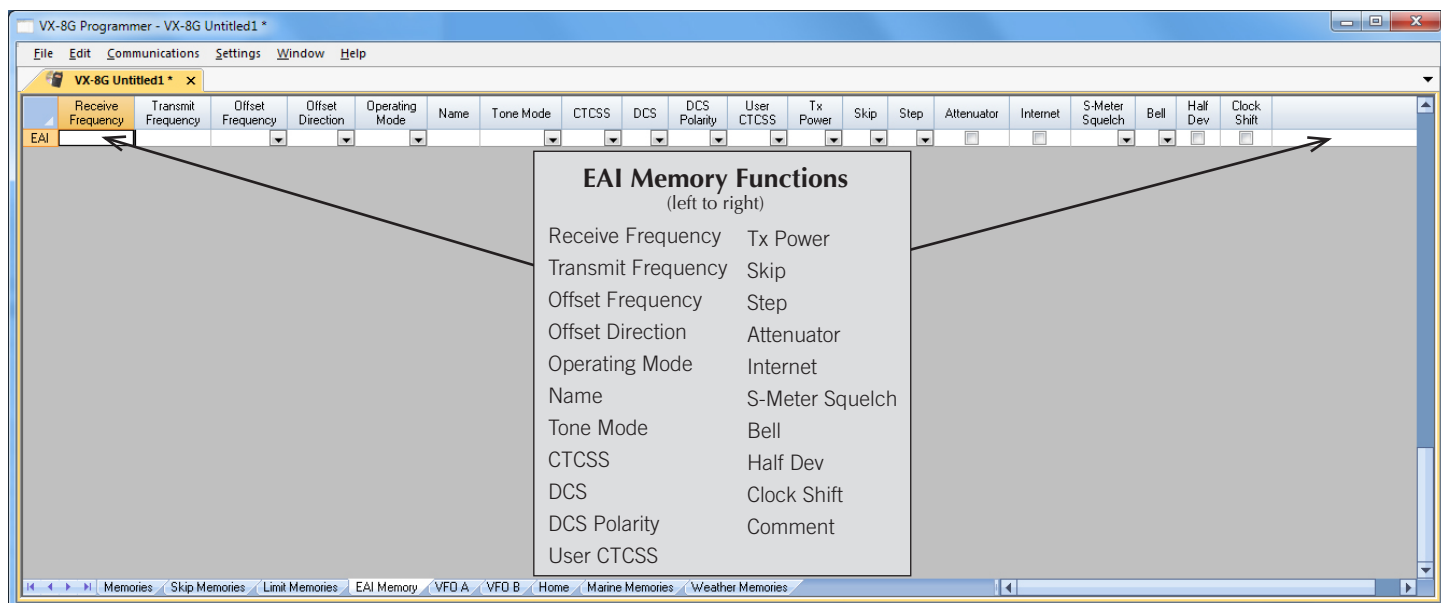
These frequencies are skipped during VFO scanning. These channels can be used for additional regular memory storage if you don't use VFO scanning.

**Limit Memory Functions**  
 (left to right)

Receive Frequency	Tx Power
Transmit Frequency	Skip
Offset Frequency	Step
Offset Direction	Mask
Operating Mode	Attenuator
Name	Internet
Tone Mode	S-Meter Squelch
CTCSS	Bell
DCS	Half Dev
DCS Polarity	Clock Shift
User CTCSS	Comment

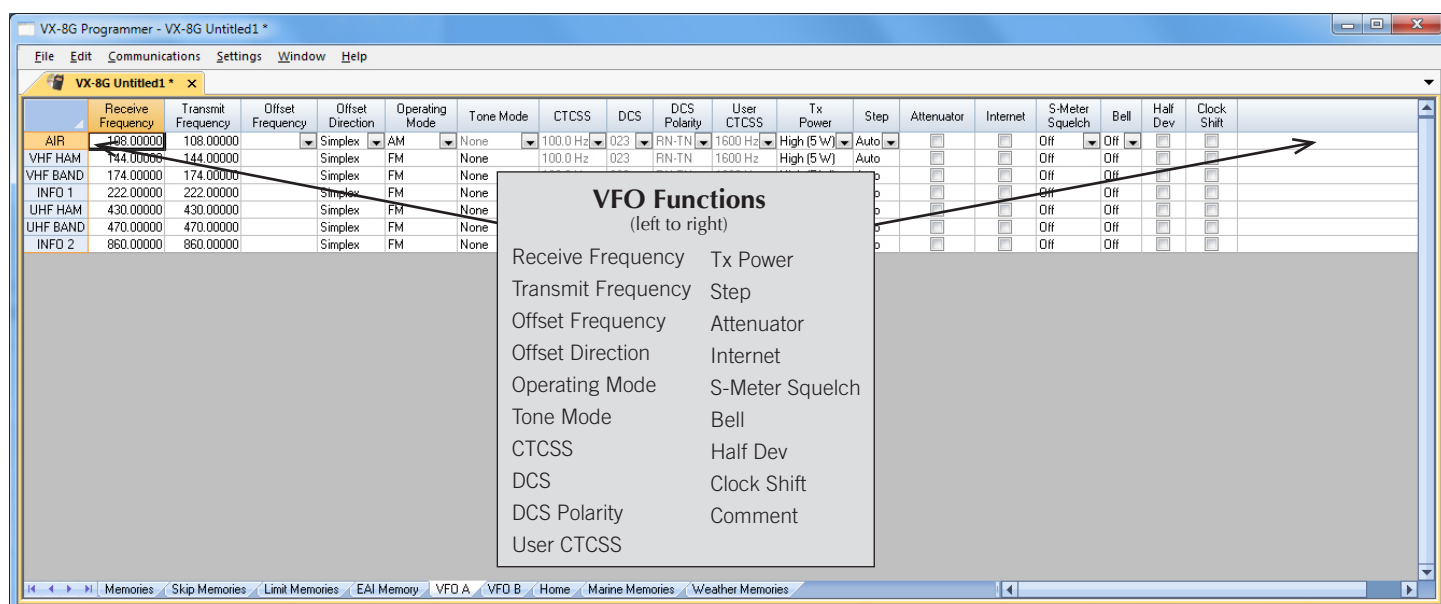
### Limit Memories

Limit Memories are used by the radio for Program Scan. Program the same details for Limit Memories as for regular memory channels.



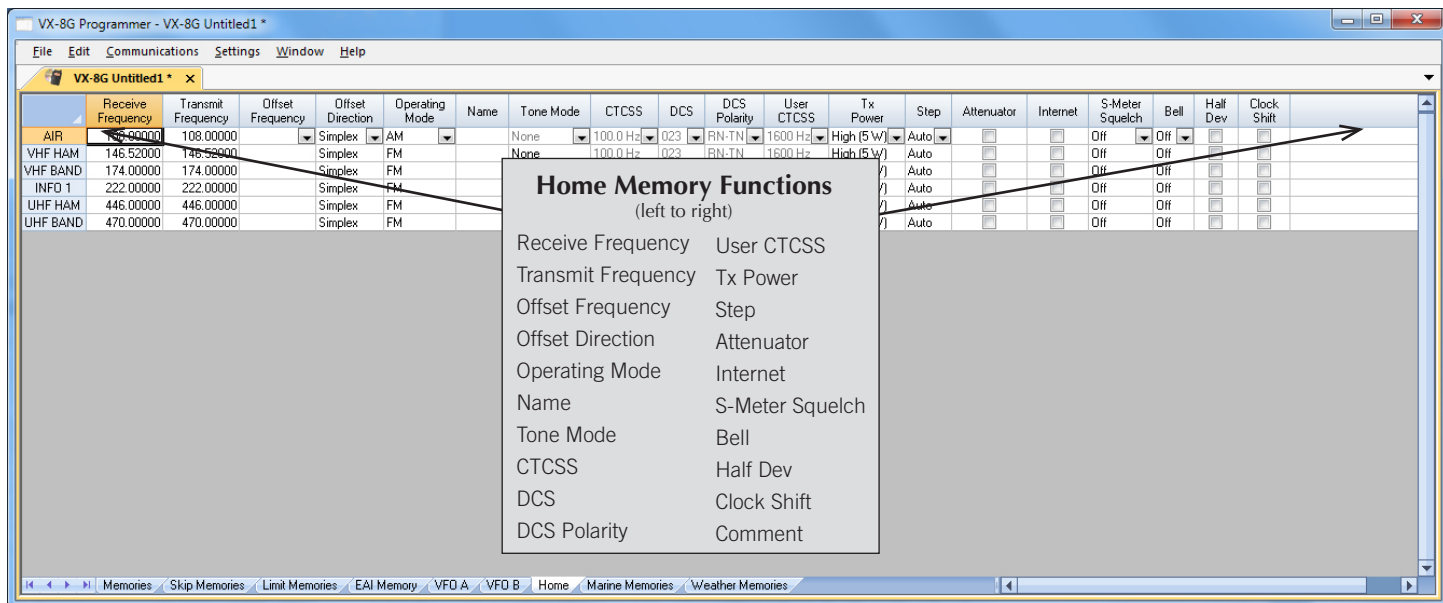
### EAI Memory

Program the frequency to use with the Emergency Automatic Identification feature.



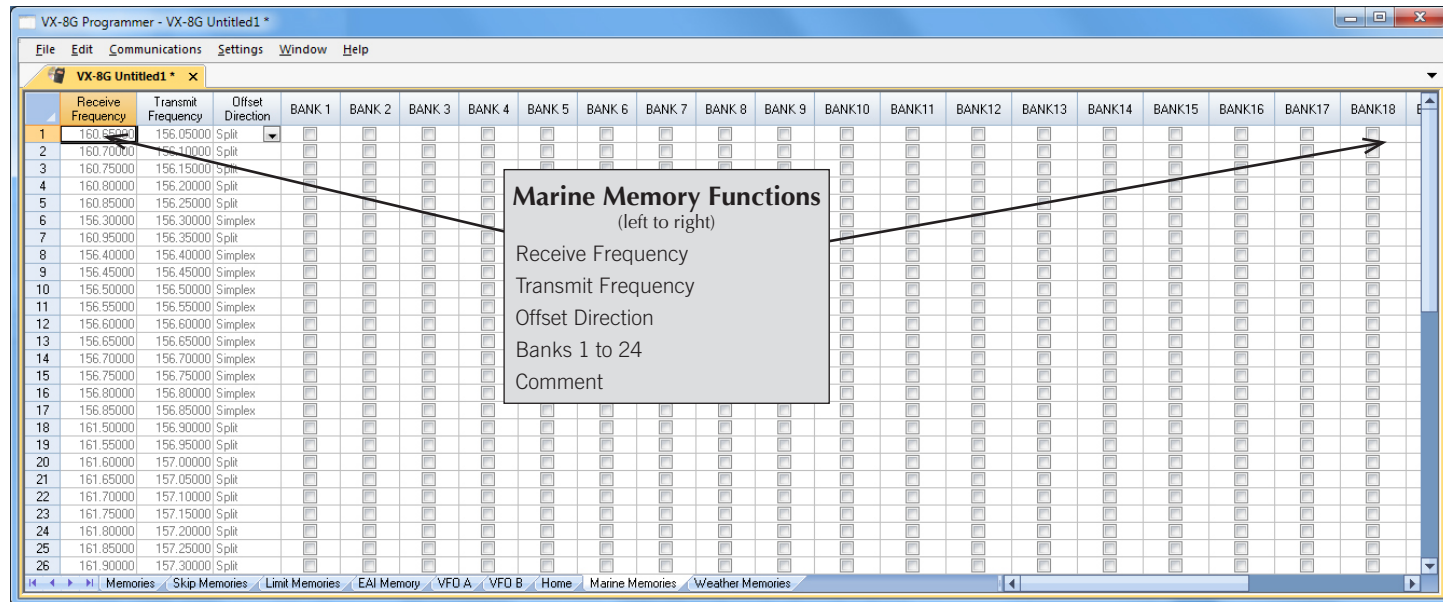
### VFO A and B

The program makes available the same VFO's as in the radio (usually one per band). Remember these are not real memory channels since the details are lost as soon as you tune the radio manually. There is no one button recall for these. You do not need to program into VFO before programming details into a memory channel. These channels are preprogrammed in the radio and while the frequency can be changed to another within the band, they cannot be left blank.



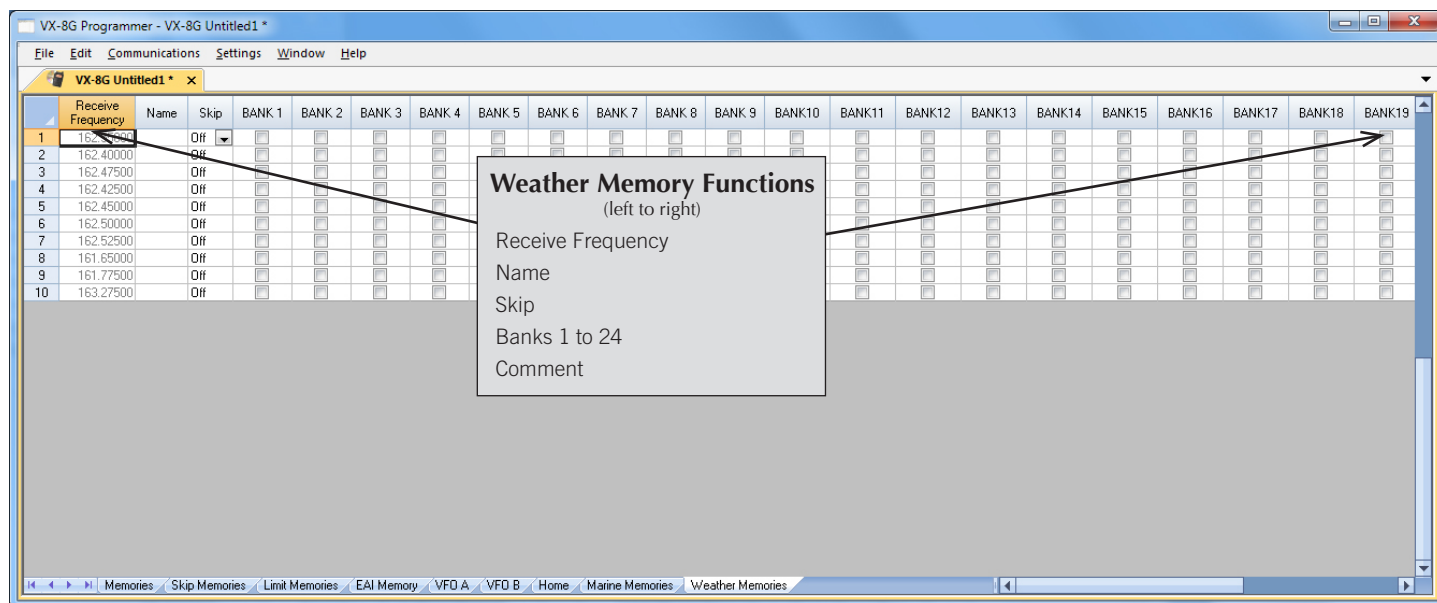
## Home

Home/Call channels are special memories accessed through one button recall on the radio. These channels are preprogrammed in the radio and while the frequency can be changed to another within the band, they cannot be left blank.



## Marine Memories

Pre-programmed in the radio, the Marine Memories cannot be changed. Receive frequency, Transmit frequency and Offset direction are disabled to prevent editing. These channels can be included with other memories in Banks 1 - 24 by checking the box for that Bank.



### Weather Memories

Ten NOAA weather frequencies are preprogrammed in the radio, and cannot be changed. Use this screen to edit Name, set Skip conditions and add a weather channel to a bank along with other memories.

[Buy Now](#)





The entries on the Settings screens are made for you to “Set and Forget”. Once settings are customized, you are prompted to save before exiting. The saved settings will be there every time you create a new frequency file.



## Messages

Set options for the Opening Message and text message details.

Menu Settings for VX-8G - Untitled.rsf

File Tabs Help

Common ARTS / CW / EAI Messages Sounds DTMF / Internet VFO and Menu Skip APRS / GPS APRS Beacon

A Band Speaker Volume 10 Squelch FM Level 1 Vibrator Off

B Band Speaker Volume 10 Squelch FM Level 1 Vibrator Off

Beep Mode Key + Scan CTCSS/DCS Bell 1 Ring FM Speaker Output Auto Vibrator Mode MODE 1

☐ Band Edge Beep Beep Level Level 5 User Beep Selection User Beep 1

User Beep Melody

Note	Duration	Note	Duration	Note	Duration	Note	Duration	Note	Duration	Note	Duration
1		2		3		4		5		6	
2		3		4		5		6		7	
3		4		5		6		7		8	

## Sound

Customize radio sounds including the notes for a User Beep Melody that sounds when User Beep is engaged for Tone Mode on a memory channel.

Menu Settings for VX-8G - Untitled.rsf

File Tabs Help

Common ARTS / CW / EAI Messages Sounds DTMF / Internet VFO and Menu Skip APRS / GPS APRS Beacon

DTMF Settings

Auto Dialer Channel 1

DTMF Speed 50 ms DTMF Delay 450 ms

DTMF

DTMF	Name
1	
2	
3	
4	
5	
6	
7	
8	
9	
10	

Internet (Wires) Settings

Access Number DTMF 1 Auto Dialer Mode Manual

Link Mode SRG Memory Selection 1

DTMF

DTMF	Name
1	
2	
3	
4	
5	
6	
7	
8	
9	
10	
11	
12	
13	
14	
15	
16	
17	

## DTMF/ Internet

Enter DTMF and Internet (wires) memory details to customize options for the functions of the radio.

Menu Settings for VX-8G - Untitled.rsf

File Tabs Help

Common ARTS / CW / EAI Messages Sounds DTMF / Internet VFO and Menu Skip APRS / GPS APRS Beacon

☐ Extended Menu On (Hides items)

Hide

Hide	Item
1	Antenna ATT
2	APD
3	ARTS Beep
4	ARTS Interval
5	Bank Name
6	BCLD
7	Beep Edge
8	Beep Level
9	Beep Melody
10	Beep Select
11	Bell Ringer
12	Bell Select
13	Busy LED
14	Clock Shift
15	CW ID
16	CS Learning
17	CW Pitch
18	CW Training
19	DC Voltage
20	DCS Code
21	DCS Inversion

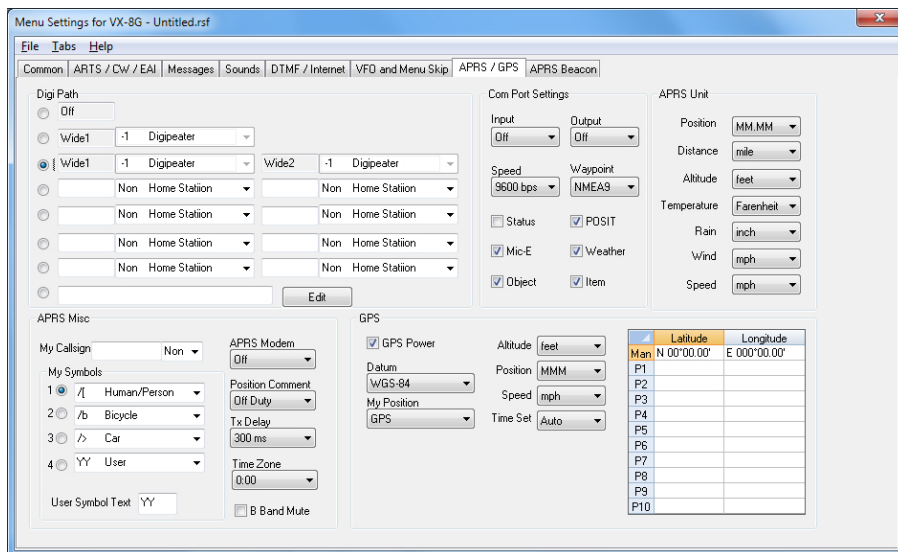
Ham Bands

Hide	VFO	VFO-A Frequency	VFO-B Frequency
1	AIR	108 - 137 MHz	108 - 137 MHz
2	VHF HAM	137 - 174 MHz	137 - 174 MHz
3	VHF BAND	174 - 222 MHz	174 - 222 MHz
4	INFO 1	222 - 420 MHz	222 - 420 MHz
5	UHF HAM	420 - 470 MHz	420 - 470 MHz
6	UHF BAND	470 - 774 MHz	470 - 580 MHz
7	INFO 2	774 - 999.99 MHz	----

\*USA Version: Cellular Blocked

## VFO and Menu Skip

Limit access to little used Bands in VFO and Hide menu options to make using the radio simpler.



Menu Settings for VX-8G - Untitled.rsf

File Tabs Help

Common ARTS / CW / EAI Messages Sounds DTMF / Internet VFO and Menu Skip APRS / GPS APRS Beacon

Digi Path

☐ Off

☐ Wide1 -1 Digipeater

☒ Wide1 -1 Digipeater

☐ Wide2 -1 Digipeater

☐ Non Home Station

☐ Non Home Station

☐ Non Home Station

☐ Non Home Station

☐ Non Home Station

☐ Non Home Station

Edit

Com Port Settings

Input Off Output Off

Speed 9600 bps Waypoint NMEA9

☐ Status ☒ POSIT

☒ Mic-E ☒ Weather

☒ Object ☒ Item

APRS Unit

Position MM.MM

Distance mile

Altitude feet

Temperature Fahrenheit

Rain inch

Wind mph

Speed mph

APRS Misc

My Callsign Non

APRS Modem Off

My Symbols 1 / Human/Person

Position Comment Off Duty

2 /b Bicycle

Tx Delay 300 ms

3 /s Car

Time Zone 0.00

4 YY User

User Symbol Text YY

☐ B Band Mute

GPS

☒ GPS Power

Altitude feet

Datum WGS-84

Position MMM

My Position GPS

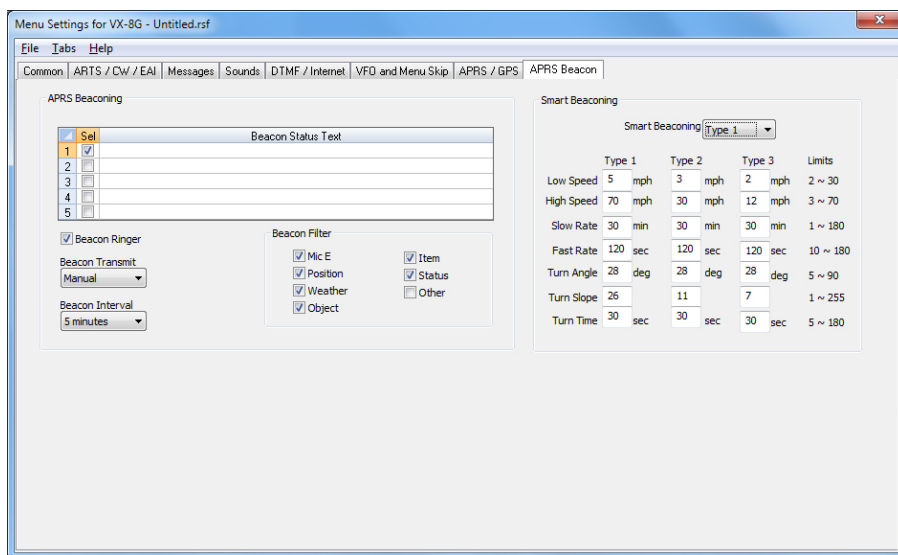
Speed mph

Time Set Auto

	Latitude	Longitude
Man	N 00°00.00'	E 000°00.00'
P1		
P2		
P3		
P4		
P5		
P6		
P7		
P8		
P9		
P10		

## APRS/GPS

Customize options for APRS and GPS functions.



Menu Settings for VX-8G - Untitled.rsf

File Tabs Help

Common ARTS / CW / EAI Messages Sounds DTMF / Internet VFO and Menu Skip APRS / GPS APRS Beacon

APRS Beacons

Set	Beacon Status Text
1	<input checked="" type="checkbox"/>
2	<input type="checkbox"/>
3	<input type="checkbox"/>
4	<input type="checkbox"/>
5	<input type="checkbox"/>

☒ Beacon Ringer

Beacon Transmit Manual

Beacon Interval 5 minutes

Beacon Filter

☒ Mic E ☒ Item

☒ Position ☒ Status

☒ Weather ☐ Other

☒ Object

Smart Beacons

Smart Beacons Type 1

	Type 1	Type 2	Type 3	Limits
Low Speed	5 mph	3 mph	2 mph	2 ~ 30
High Speed	70 mph	30 mph	12 mph	3 ~ 70
Slow Rate	30 min	30 min	30 min	1 ~ 180
Fast Rate	120 sec	120 sec	120 sec	10 ~ 180
Turn Angle	28 deg	28 deg	28 deg	5 ~ 90
Turn Slope	26	11	7	1 ~ 255
Turn Time	30 sec	30 sec	30 sec	5 ~ 180

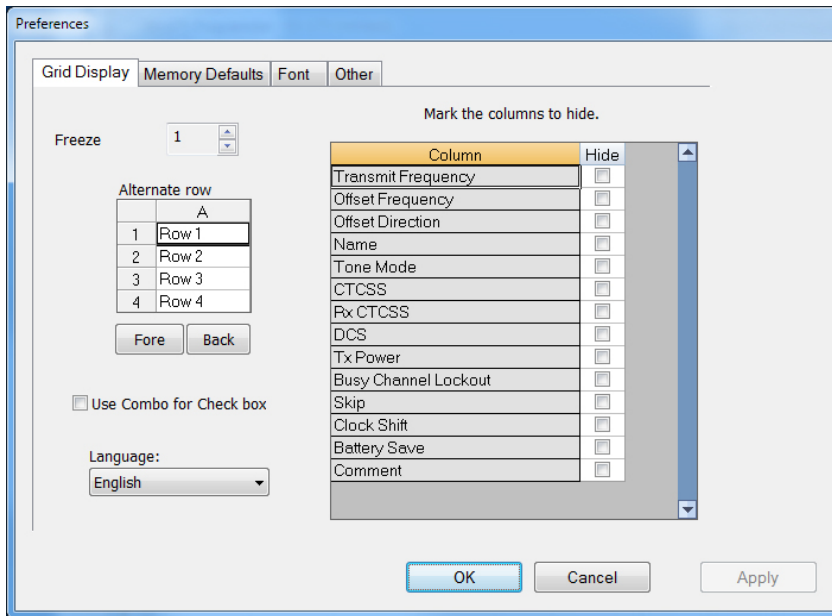
## APRS Beacon

Enter APRS Beacons text, customize beaconing functions and set up Smart Beacons with options on this screen.

Want to Know Even More?

For additional details and tips, click here for the comprehensive ADMS-VX8G Programmer Help File.



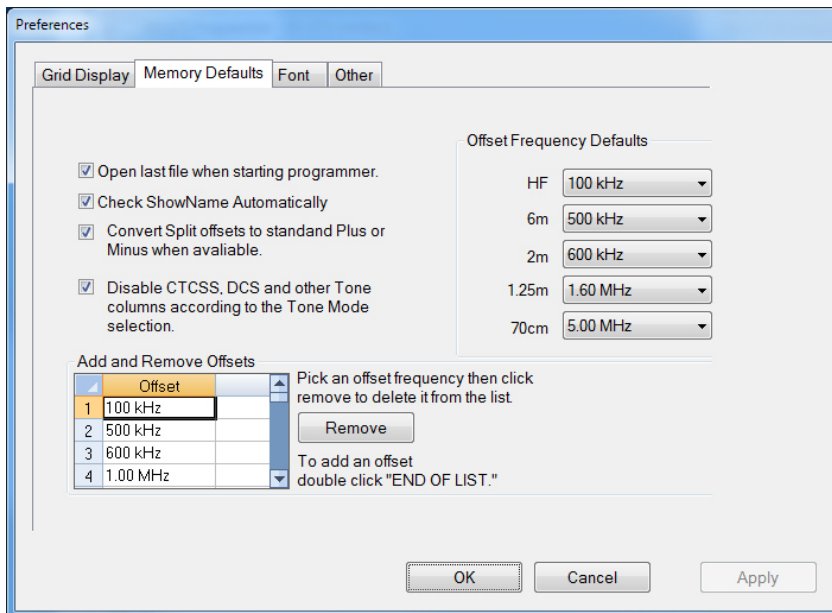


The screenshot shows the 'Preferences' dialog box with the 'Grid Display' tab selected. The 'Freeze' dropdown is set to '1'. The 'Alternate row' section shows a table with rows 1 through 4, with 'A' selected in the 'Alternate row' column. The 'Use Combo for Check box' option is unchecked. The 'Language' dropdown is set to 'English'. The 'Mark the columns to hide' section shows a table with columns and a 'Hide' checkbox for each column.

Column	Hide
Transmit Frequency	<input type="checkbox"/>
Offset Frequency	<input type="checkbox"/>
Offset Direction	<input type="checkbox"/>
Name	<input type="checkbox"/>
Tone Mode	<input type="checkbox"/>
CTCSS	<input type="checkbox"/>
Rx CTCSS	<input type="checkbox"/>
DCS	<input type="checkbox"/>
Tx Power	<input type="checkbox"/>
Busy Channel Lockout	<input type="checkbox"/>
Skip	<input type="checkbox"/>
Clock Shift	<input type="checkbox"/>
Battery Save	<input type="checkbox"/>
Comment	<input type="checkbox"/>

## Grid Display

- RT Systems now available in English, French, German, Italian, Spanish, Portuguese and Japanese.
- Set colors for text (Fore) or background (Back) of alternate rows for easier viewing across the columns.
- Freeze columns to keep information on the screen as you scroll to the right of the page.
- Hide columns you don't use. Customize your print-out: hidden columns do not print.
- Use Combo for Check boxes – changes the grid to eliminate check box selections that are disabled on some systems.



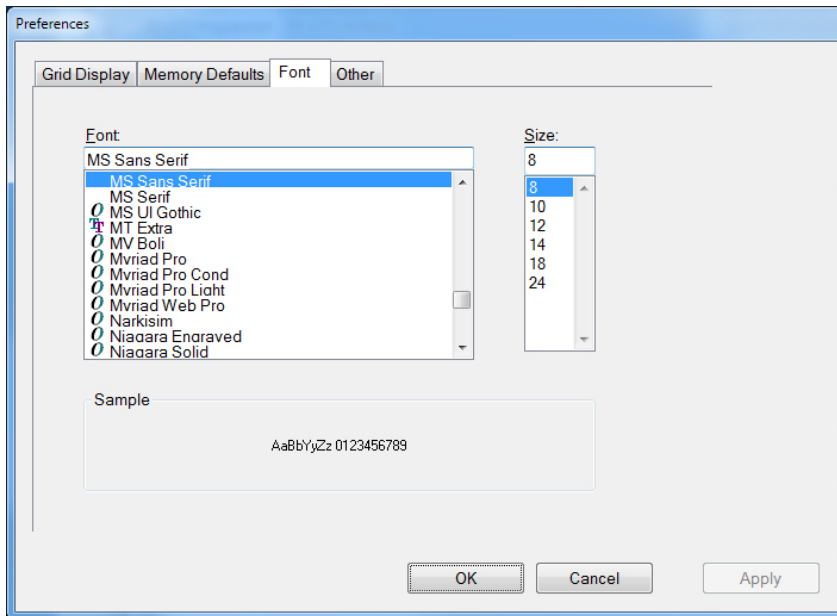
The screenshot shows the 'Preferences' dialog box with the 'Memory Defaults' tab selected. The 'Open last file when starting programmer' checkbox is checked. The 'Check ShowName Automatically' checkbox is checked. The 'Convert Split offsets to standard Plus or Minus when available' checkbox is checked. The 'Disable CTCSS, DCS and other Tone columns according to the Tone Mode selection' checkbox is checked. The 'Offset Frequency Defaults' section shows a table with frequency ranges and their corresponding default offsets. The 'Add and Remove Offsets' section shows a table with a list of offsets and a 'Remove' button.

Offset Frequency Defaults	
HF	100 kHz
6m	500 kHz
2m	600 kHz
1.25m	1.60 MHz
70cm	5.00 MHz

Offset	
1	100 kHz
2	500 kHz
3	600 kHz
4	1.00 MHz

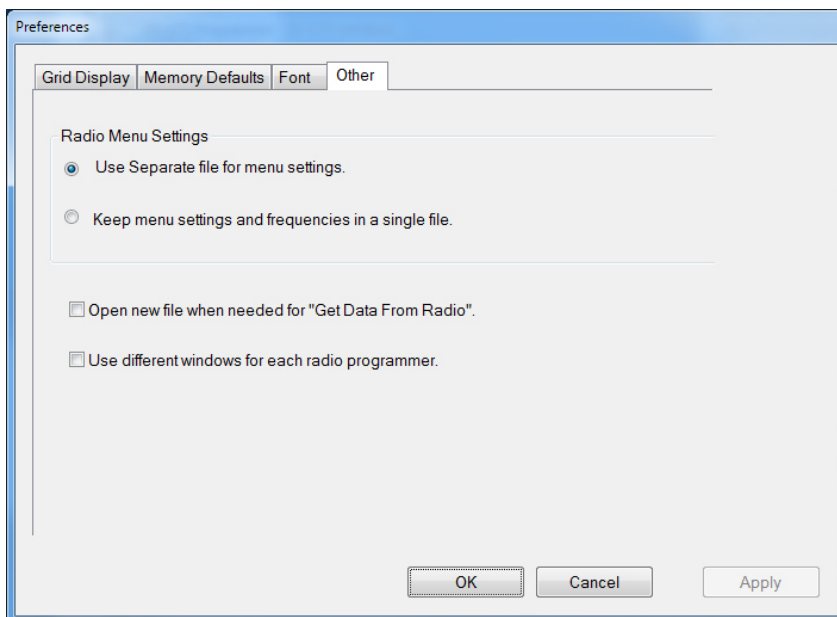
## Memory Defaults

- Set options to control auto fill information for memory channel entries.



#### Font

- Set options to control the font in the column headers of the channel entry screens. Select any font and font size available on your computer.



#### Other

- Set options to control how the programmer handles the global Radio Menu Settings file.
  - Separate (default) handles the global settings of the radio in a “set and forget” fashion. Once you set these up and save the file you won’t have to reset them for a new frequency file.
  - Together as one gives you the ability to create files that are complete with frequencies and customized global settings. In this mode, each file begins with factory defaults for every option of the radio.
- Check “Get data from Radio” new file option to prevent data loss when you read from your radio into the programmer.
- Check “different window” option to make the programmer for a different radio run in completely separate window rather than in a separate tab of the same window.

**Buy Now**