

The JPS-6188 Programmer is designed to give you the ease and convenience of programming the memories and set menu options of your radio from your PC.

Memory Channels Include:

- 200 Memory Channels
- 2 VFO Channels

Other Menu Item Categories Include:

- Common
- DTMF
- 2Tone
- 5Tone

The Programmer Is for so Much More than Just Memory Management.

With the JPS-6188 Programmer you can begin a new “factory fresh” file into which frequencies and option settings are entered. Or, you can read from the radio, store these details on your computer and make changes. Then, with minimal button pushing, send the new configuration back to the radio.

The Programmer allows you to create and save as many files as you want for your radio. Files can even be shared between users via email or the Internet.

Managing all the options of this great little radio becomes easy with the Programmer. The cut, copy, paste and insert features of the Programmer make channel management easier than ever.

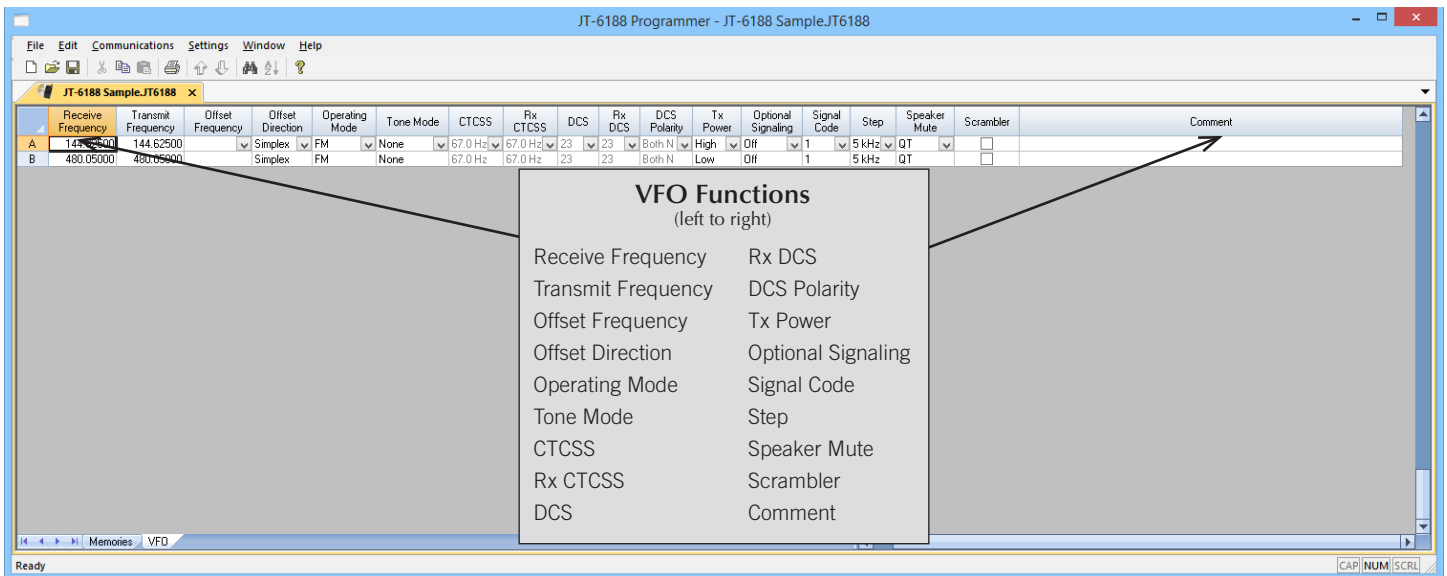
Open more than one file at a time. Memory channel information can be copied from one file to another within the Programmer making it really easy to set up a new file.



Hardware Requirements:

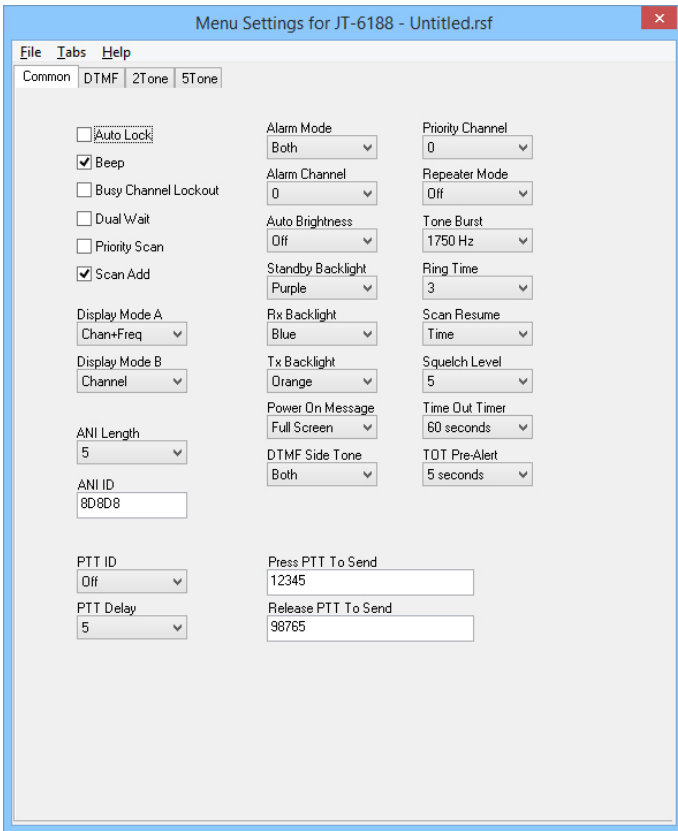
A PC running XP SP3 (32 or 64 bit), Windows 7 (32 or 64 bit), Windows 8 or 8.1 (full version) or Windows 10. Local USB port and RT Systems USB-72 interface cable (6' cable length). The cable connects the radio to the computer from the USB port on the computer to the Speaker jack on the radio. Internet connection for update at end of software installation.





VFO

The program makes available the same VFO's as in the radio (usually one per band). Remember these are not real memory channels since the details are lost as soon as you tune the radio manually. There is no one button recall for these. You do not need to program into VFO before programming details into a memory channel. These channels are preprogrammed in the radio and while the frequency can be changed to another within the band, they cannot be left blank.



Menu Settings for JT-6188 - Untitled.rsf

File Tabs Help

Common DTMF 2Tone 5Tone

Auto Lock

Beep

Busy Channel Lockout

Dual Wait

Priority Scan

Scan Add

Display Mode A
Chan+Freq

Display Mode B
Channel

ANI Length
5

ANI ID
8D8D8

PTT ID
Off

PTT Delay
5

Alarm Mode
Both

Alarm Channel
0

Auto Brightness
Off

Standby Backlight
Purple

Fix Backlight
Blue

Tx Backlight
Orange

Power On Message
Full Screen

DTMF Side Tone
Both

Priority Channel
0

Repeater Mode
Off

Tone Burst
1750 Hz

Ring Time
3

Scan Resume
Time

Squelch Level
5

Time Out Timer
60 seconds

TOT Pre-Alert
5 seconds

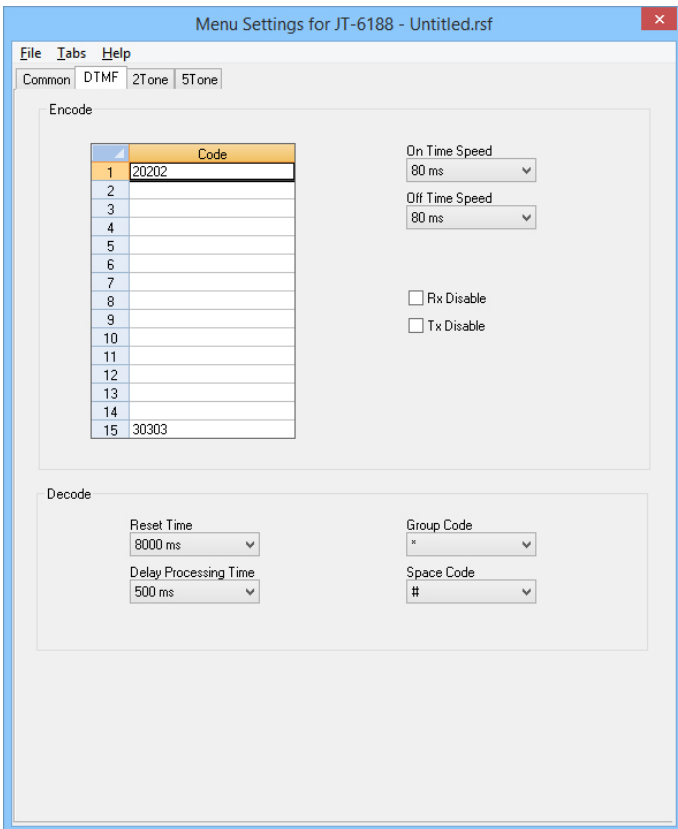
Press PTT To Send
12345

Release PTT To Send
98765

Common

Use this screen to customize other set menu features of the radio. Check boxes toggle features on or off, drop down menus list all selections and blank boxes for personalized entry add to the ease of setting up your radio exactly like you want it.

The entries on the Settings screens are made for you to “Set and Forget”. Once settings are customized, you are prompted to save before exiting. The saved settings will be there every time you create a new frequency file.



Menu Settings for JT-6188 - Untitled.rsf

File Tabs Help

Common DTMF 2Tone 5Tone

Encode

	Code
1	20202
2	
3	
4	
5	
6	
7	
8	
9	
10	
11	
12	
13	
14	
15	30303

On Time Speed
80 ms

Off Time Speed
80 ms

Rx Disable

Tx Disable

Decode

Reset Time
8000 ms

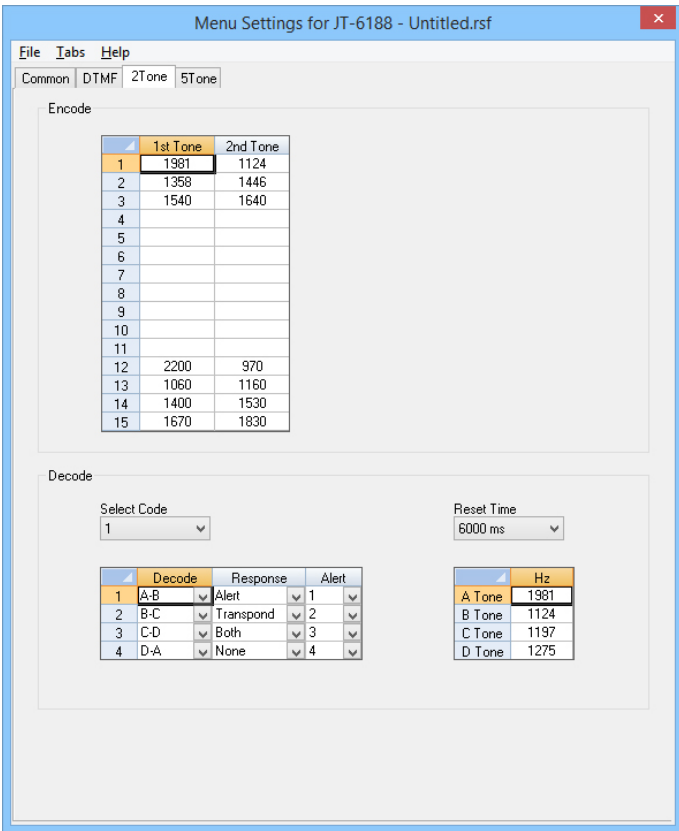
Delay Processing Time
500 ms

Group Code
*

Space Code
#

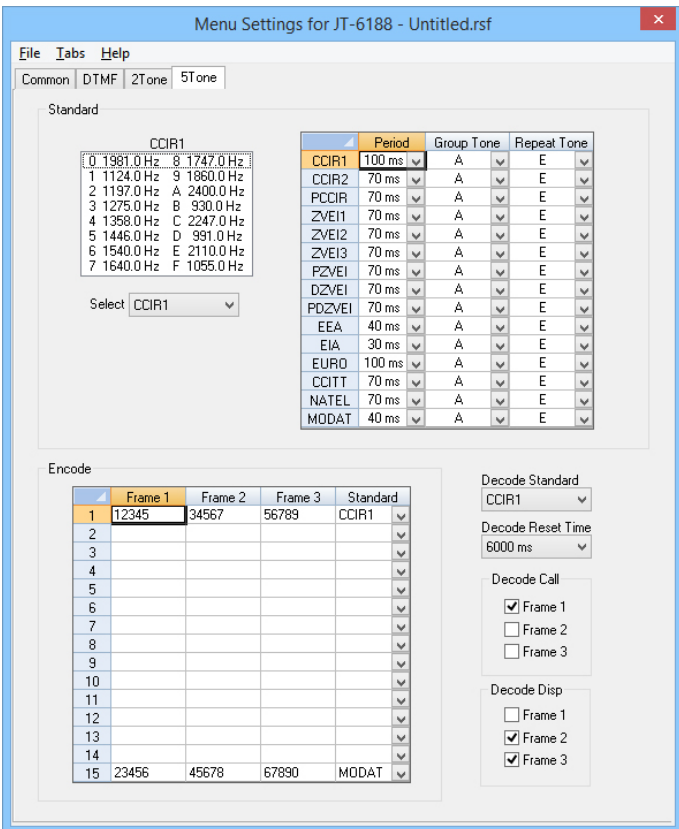
DTMF

Enter DTMF memory details and customize options for this function of the radio.



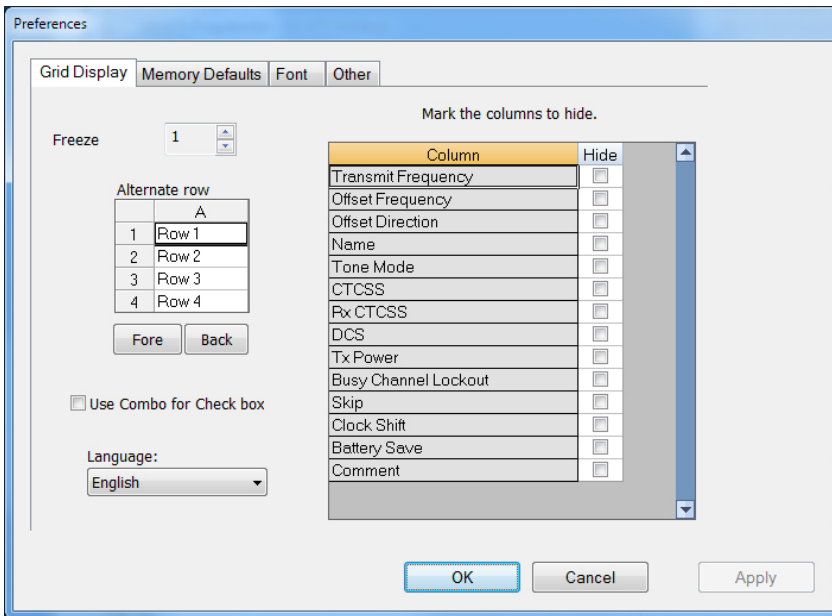
2Tone

Set options for a 2Tone functionality specific to your system.



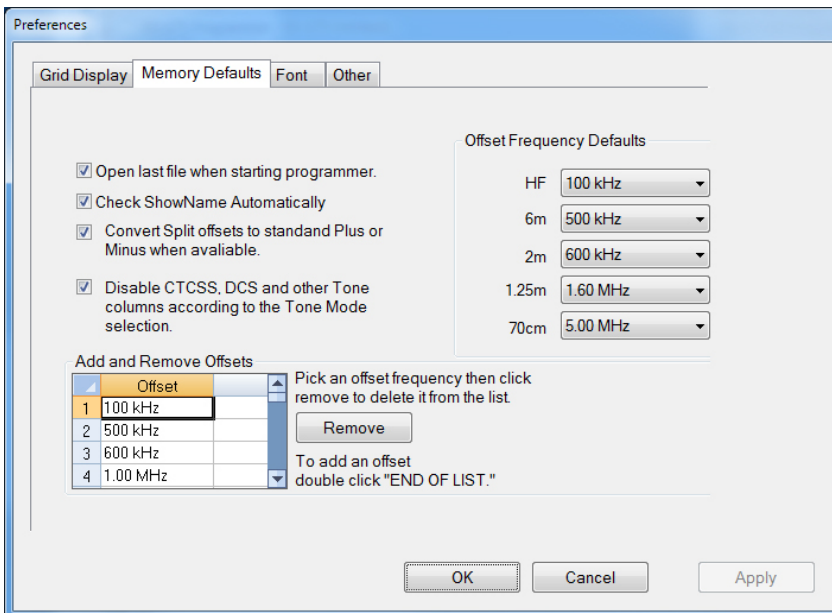
5Tone

Set options for a 5Tone paging system.



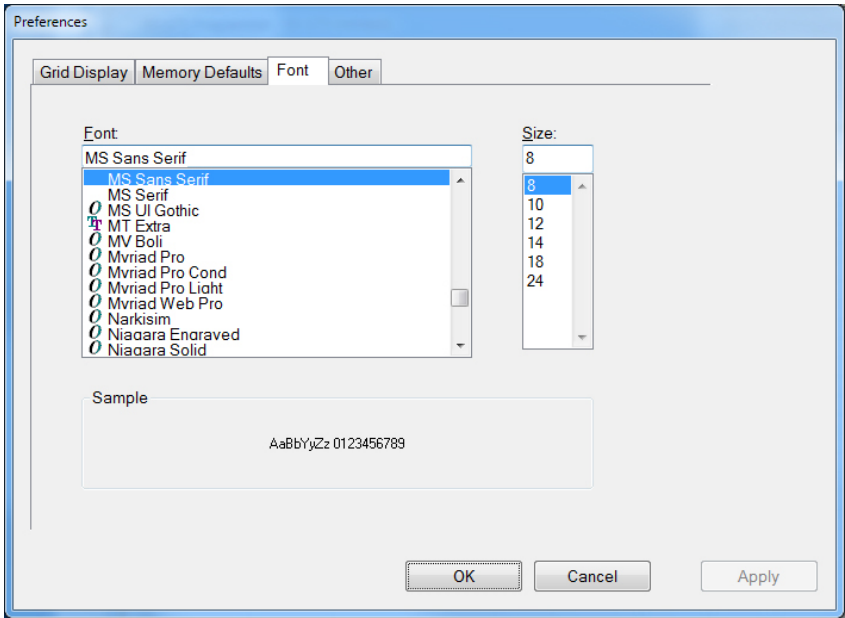
Grid Display

- RT Systems now available in English, French, German, Italian, Spanish, Portuguese and Japanese.
- Set colors for text (Fore) or background (Back) of alternate rows for easier viewing across the columns.
- Freeze columns to keep information on the screen as you scroll to the right of the page.
- Hide columns you don't use. Customize your print-out: hidden columns do not print.
- Use Combo for Check boxes – changes the grid to eliminate check box selections that are disabled on some systems.



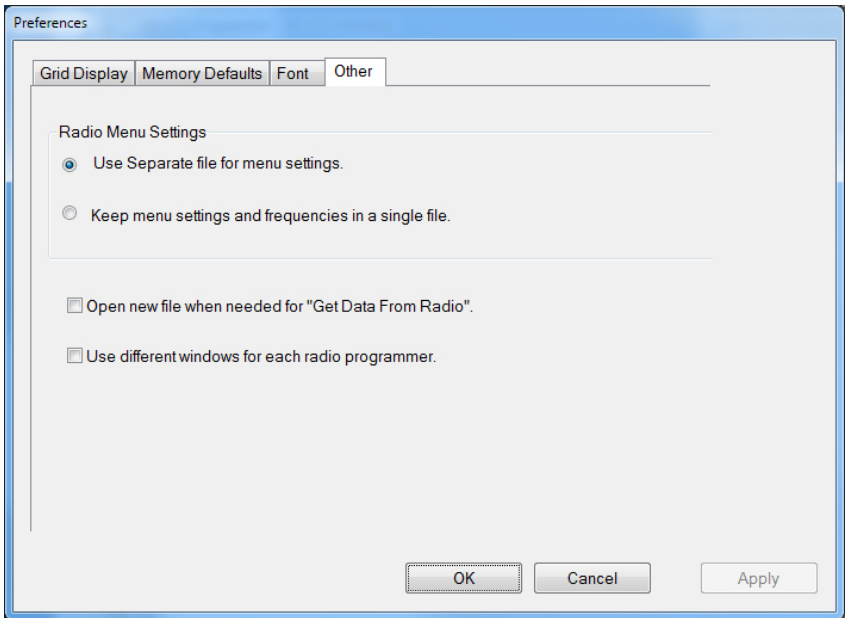
Memory Defaults

- Set options to control auto fill information for memory channel entries.



Font

- Set options to control the font in the column headers of the channel entry screens. Select any font and font size available on your computer.



Other

- Set options to control how the programmer handles the global Radio Menu Settings file.
 - Separate (default) handles the global settings of the radio in a “set and forget” fashion. Once you set these up and save the file you won’t have to reset them for a new frequency file.
 - “Single file” gives you the ability to create files that are complete with frequencies and customized global settings. In this mode, each file begins with factory defaults for every option of the radio.
- Check “Get data from Radio” new file option to prevent data loss when you read from your radio into the programmer.
- Check “different window” option to make the programmer for a different radio run in completely separate window rather than in a separate tab of the same window.

[Buy Now](#)