

Receive Frequency	Transmit Frequency	Offset Frequency	Offset Direction	Offset Reverse	Operating Mode	Name	Tone Mode	CTCSS	Rx CTCSS	DCS	Skip	Step	Tx Step	Beat Shift	Comment
0	440.00000	445.00000	5.00 MHz	Plus		FM	None	88.5 Hz	88.5 Hz	023		25 kHz	5 kHz		
1	440.01250	445.01250	5.00 MHz	Plus		FM	None	88.5 Hz	88.5 Hz	023		25 kHz	5 kHz		
2	440.02500	445.02500	5.00 MHz	Plus		FM						25 kHz	5 kHz		
3	440.03750	445.03750	5.00 MHz	Plus		FM						25 kHz	5 kHz		
4	440.05000	445.05000	5.00 MHz	Plus		FM						25 kHz	5 kHz		
5															
6	450.00000	450.00000		Simplex		FM Narrow	Receive Frequency	CTCSS				12.5 kHz	5 kHz		
7	450.01250	450.01250		Simplex		FM Narrow	Transmit Frequency	Rx CTCSS				12.5 kHz	5 kHz		
8	450.02500	450.02500		Simplex		FM Narrow	Offset Frequency	DCS				12.5 kHz	5 kHz		
9	450.03750	450.03750		Simplex		FM Narrow	Offset Direction	Skip				12.5 kHz	5 kHz		
10	450.05000	450.05000		Simplex		FM Narrow	Offset Reverse	Step				12.5 kHz	5 kHz		
11	450.06250	450.06250		Simplex		FM Narrow	Operating Mode	Tx Step				12.5 kHz	5 kHz		
12	450.07500	450.07500		Simplex		FM Narrow	Name	Beat Shift				25 kHz	5 kHz		
13	450.08750	450.08750		Simplex		FM Narrow	Tone Mode	Comment				25 kHz	5 kHz		
14	450.10000	450.10000		Simplex		FM Narrow						25 kHz	5 kHz		
15															
16	444.25000	449.25000				FM						25 kHz	5 kHz		
17	444.26250	449.26250				FM						25 kHz	5 kHz		
18	444.27500	449.27500				FM						25 kHz	5 kHz		
19	444.28750	449.28750				FM						25 kHz	5 kHz		
20	444.30000	449.30000				FM						25 kHz	5 kHz		
21	444.31250	449.31250				FM						25 kHz	5 kHz		
22	444.32500	449.32500	5.00 MHz	Plus		FM	None	88.5 Hz	88.5 Hz	023		25 kHz	5 kHz		
23	444.33750	449.33750	5.00 MHz	Plus		FM	None	88.5 Hz	88.5 Hz	023		25 kHz	5 kHz		
24	444.35000	449.35000	5.00 MHz	Plus		FM	None	88.5 Hz	88.5 Hz	023		25 kHz	5 kHz		
25	444.36250	449.36250	5.00 MHz	Plus		FM	None	88.5 Hz	88.5 Hz	023		25 kHz	5 kHz		

The KRS-471 Programmer is designed to give you the ease and convenience of programming the memories and set menu options of your radio from your PC.

Memory Channels Include:

- 100 Memory Channels
- 6 Limit Memories (3 pair)
- 1 VFO Channel
- 3 Call Channels

Other Menu Item Categories Include:

- Common
- DTMF

The Programmer Is for so Much More than Just Memory Management.

With the KRS-471 Programmer you can begin a new “factory fresh” file into which frequencies and option settings are entered. Or, you can read from the radio, store these details on your computer and make changes. Then, with minimal button pushing, send the new configuration back to the radio.

The Programmer allows you to create and save as many files as you want for your radio. Files can even be shared between users via email or the Internet. Any RT Systems Version 4.50 program can open a file from any other RT Systems Version 4.50 programmer... even from a different radio.

Managing all the options of this great little radio becomes easy with the Programmer. The cut, copy, paste and insert features of the Programmer make channel management easier than ever.

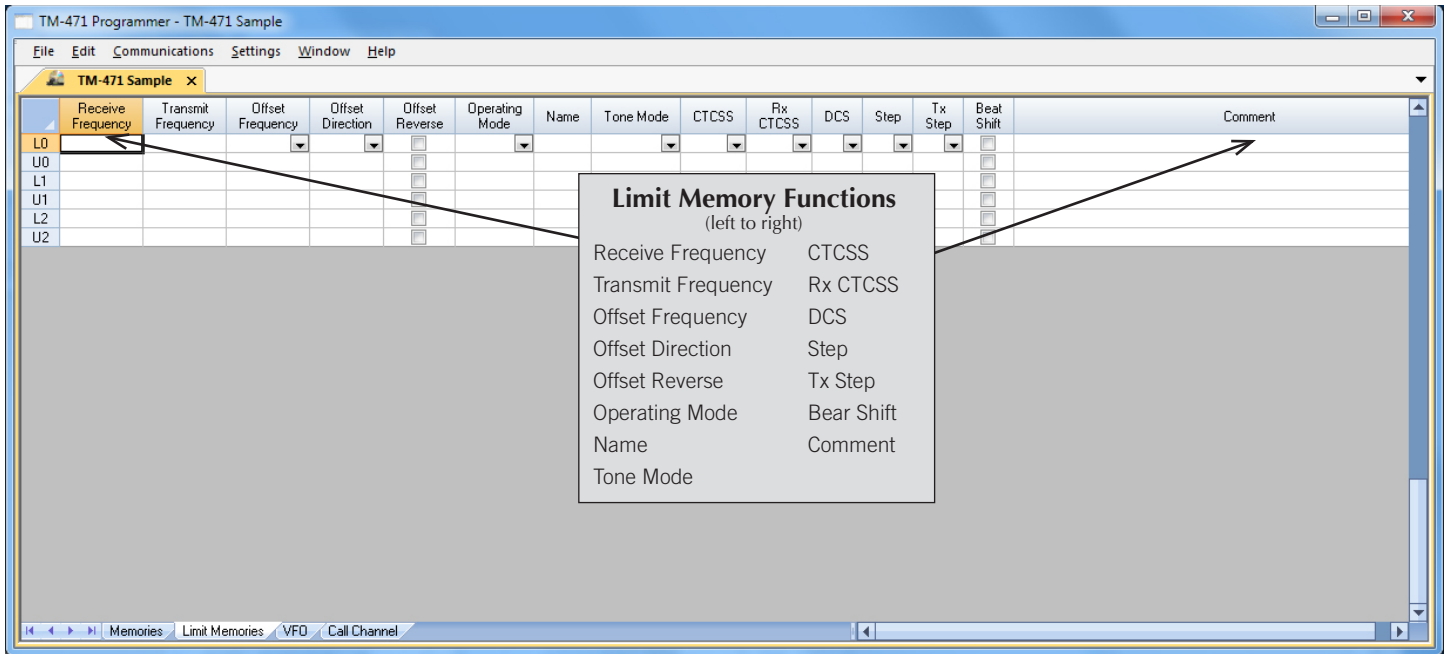
Open more than one file at a time. Memory channel information can be copied from one file to another within the Programmer making it really easy to set up a new file.



Hardware Requirements:

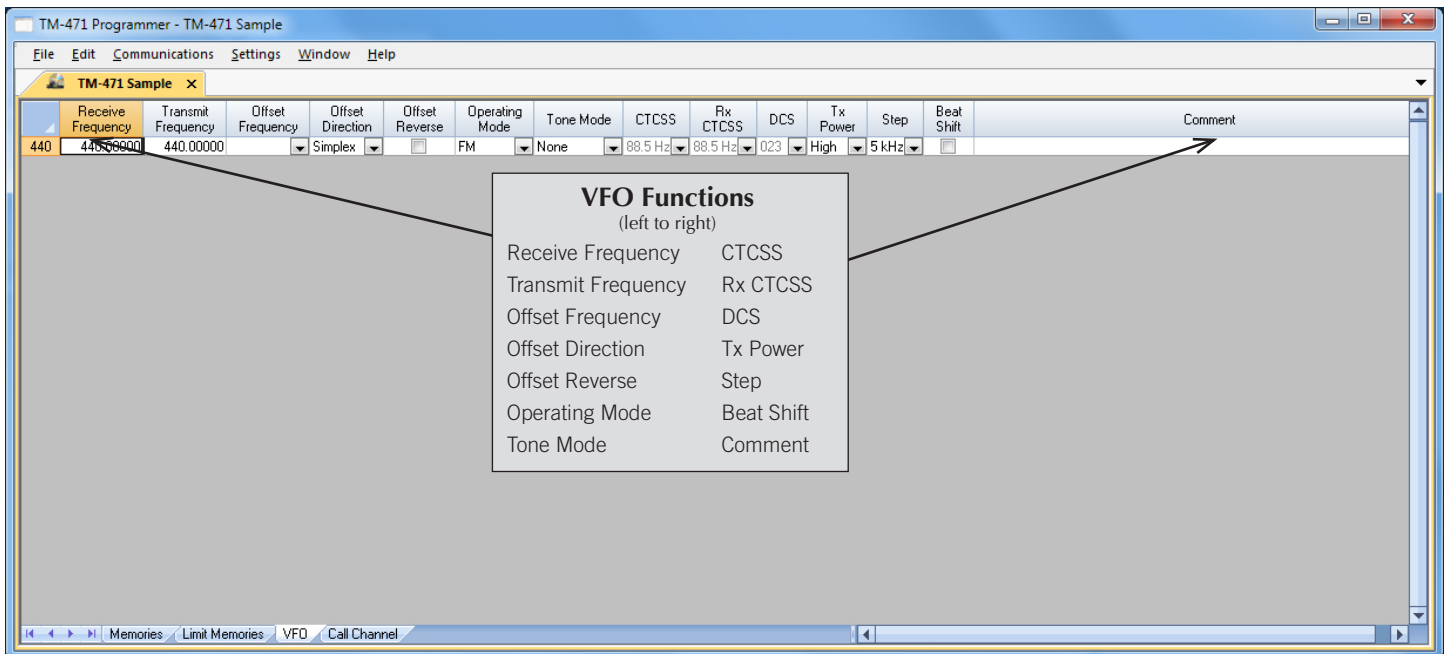
A PC running Windows XP, Vista, Windows 7 (32 or 64 bit) or Windows 8 (full version). A CD drive (local or network) for installation. A free USB port. The RT Systems USB-K5D interface cable. The cable connects the radio to the computer from the USB port on the computer to the mic jack on the front of the radio.





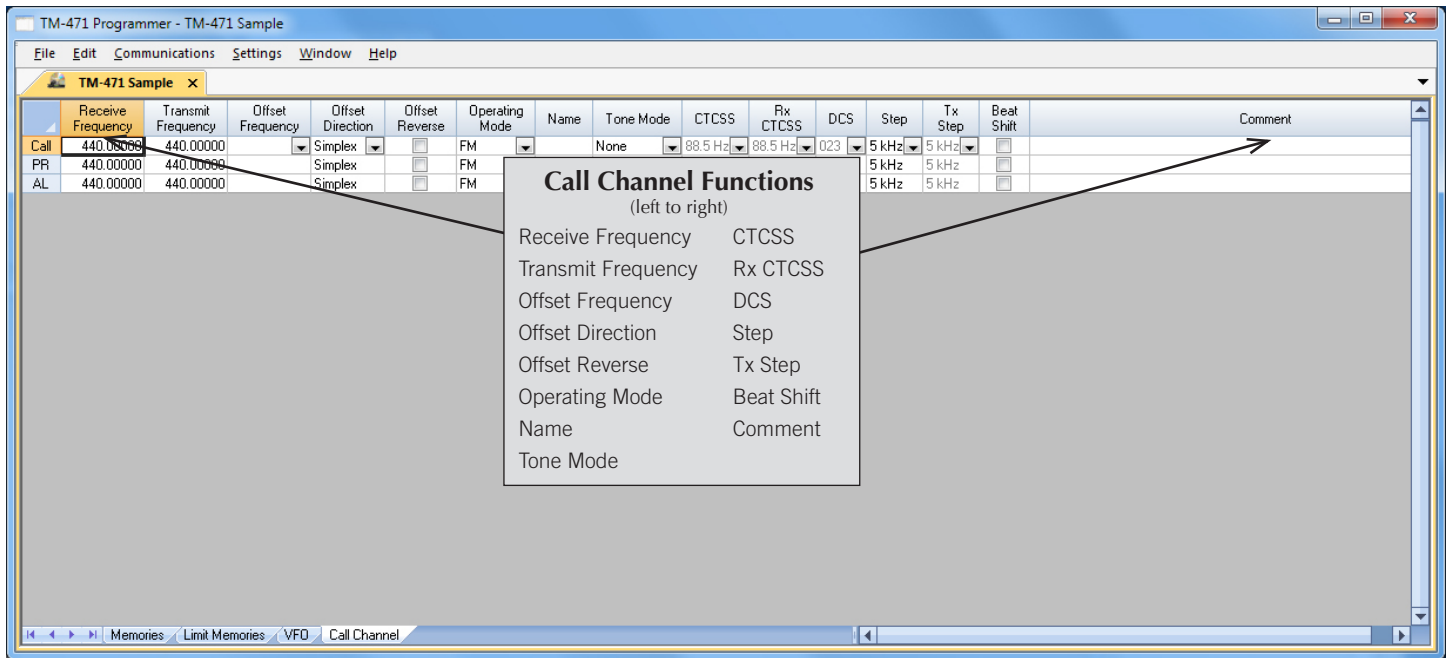
Limit Memories

Limit Memories are used by the radio for Program Scan. Program the same details for Limit Memories as for regular memory channels. Many of the Limit Memories are preprogrammed in the radio and while the frequency can be changed to another within the band, they cannot be left blank.



VFO

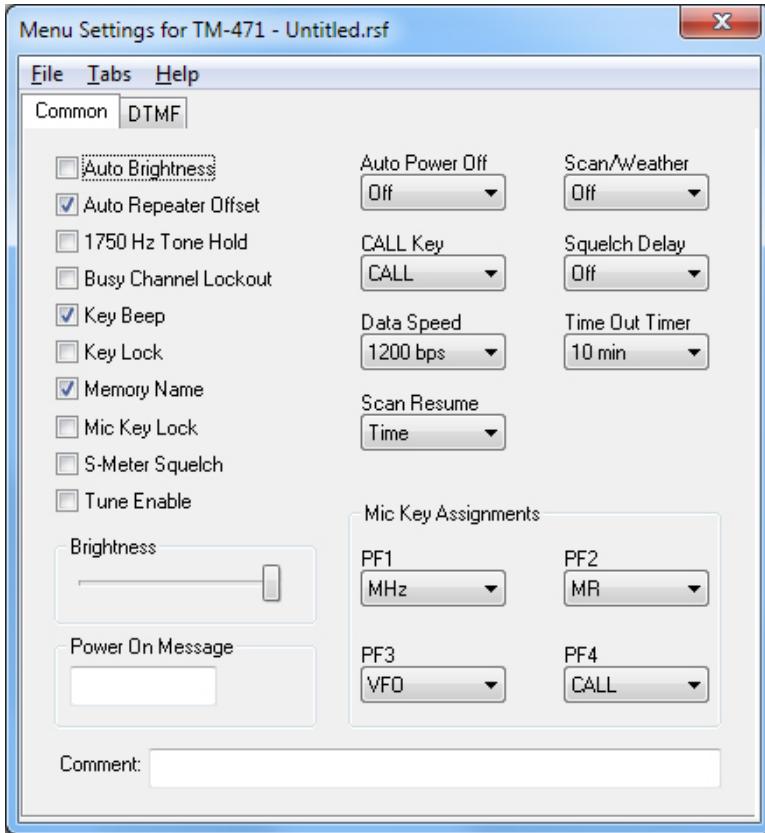
The program makes available the same VFO's as in the radio (usually one per band). Remember these are not real memory channels since the details are lost as soon as you tune the radio manually. There is no one button recall for these. You do not need to program into VFO before programming details into a memory channel. These channels are preprogrammed in the radio and while the frequency can be changed to another within the band, they cannot be left blank.



Call Channel

Home/Call channels are special memories accessed through one button recall on the radio. These channels are preprogrammed in the radio and while the frequency can be changed to another within the band, they cannot be left blank.

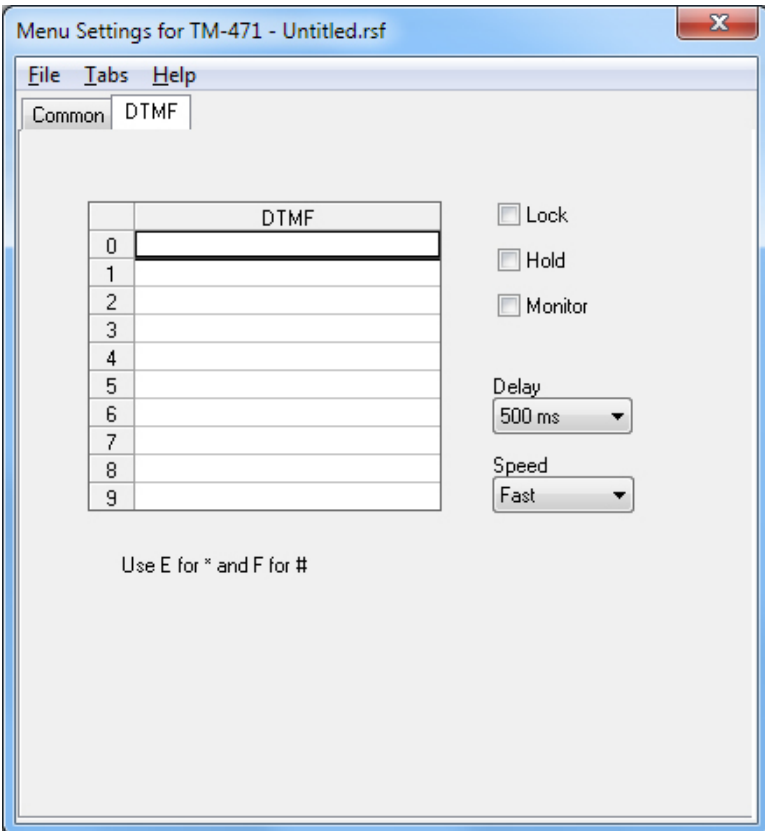
[Buy Now](#)



Common

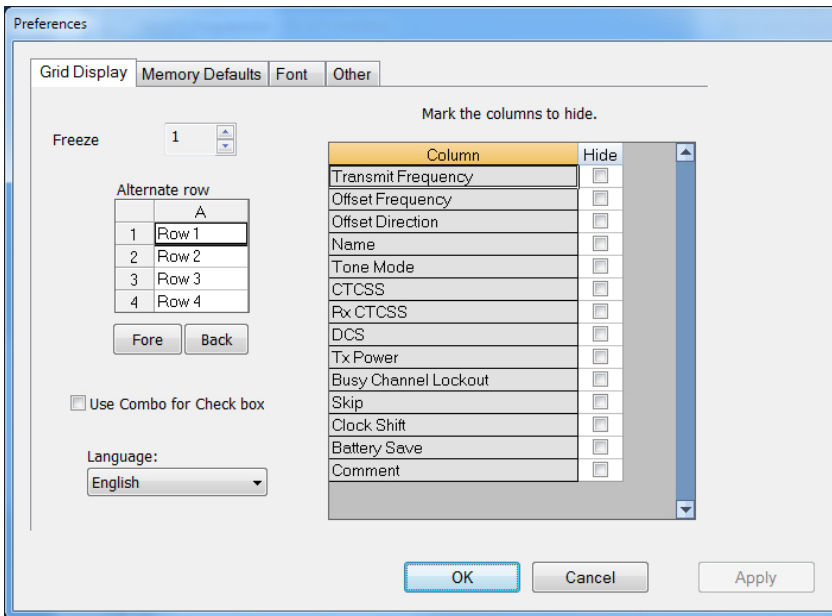
Use these screens to customize other set menu features of the radio. Check boxes toggle features on or off, drop down menus list all selections and blank boxes for personalized entry add to the ease of setting up your radio exactly like you want it.

The entries on the Settings screens are made for you to “Set and Forget”. Once settings are customized, you are prompted to save before exiting. The saved settings will be there every time you create a new frequency file.



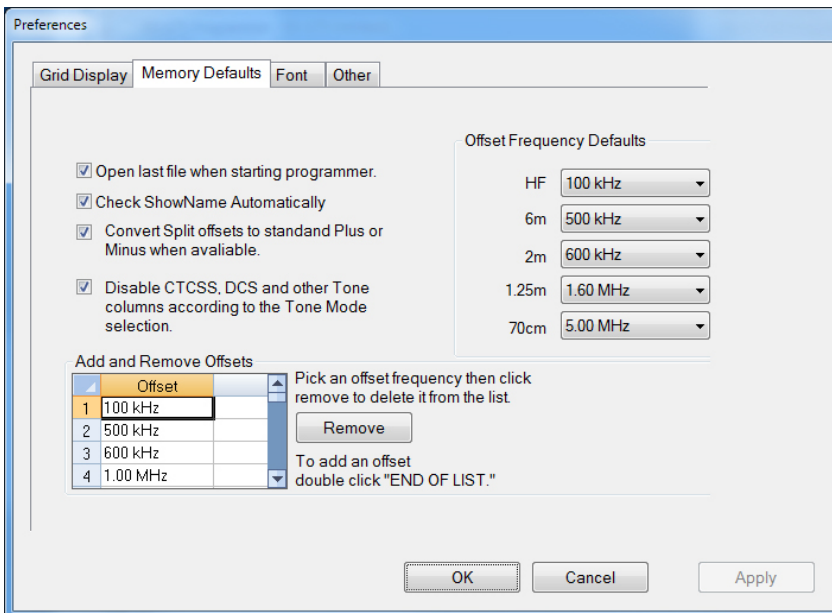
DTMF

Enter DTMF memory details and customize options for this function of the radio.



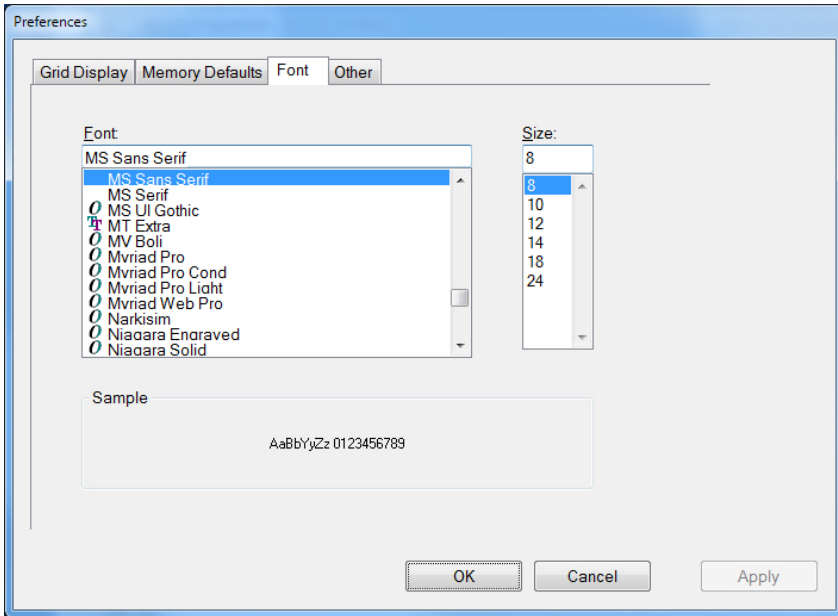
Grid Display

- RT Systems now available in English, French, German, Italian, Spanish, Portuguese and Japanese.
- Set colors for text (Fore) or background (Back) of alternate rows for easier viewing across the columns.
- Freeze columns to keep information on the screen as you scroll to the right of the page.
- Hide columns you don't use. Customize your print-out: hidden columns do not print.
- Use Combo for Check boxes – changes the grid to eliminate check box selections that are disabled on some systems.



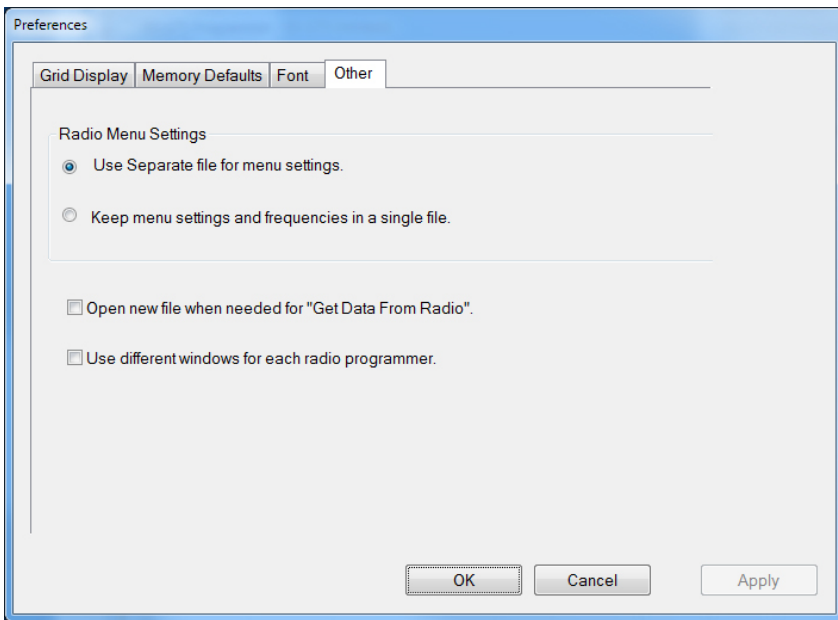
Memory Defaults

- Set options to control auto fill information for memory channel entries.



Font

- Set options to control the font in the column headers of the channel entry screens. Select any font and font size available on your computer.



Other

- Set options to control how the programmer handles the global Radio Menu Settings file.
 - Separate (default) handles the global settings of the radio in a “set and forget” fashion. Once you set these up and save the file you won’t have to reset them for a new frequency file.
 - Together as one gives you the ability to create files that are complete with frequencies and customized global settings. In this mode, each file begins with factory defaults for every option of the radio.
- Check “Get data from Radio” new file option to prevent data loss when you read from your radio into the programmer.
- Check “different window” option to make the programmer for a different radio run in completely separate window rather than in a separate tab of the same window.

Buy Now