

The KRS-D710 Programmer is designed to give you the ease and convenience of programming the memories and set menu options of your radio from your PC.

Memory Channels Include:

- 1,000 Memory Channels
- 20 Limit Memories (10 pair)
- 10 VFO Channel on Each of 6 8M Programmable Memories
- 2 Home Channels

Other Menu Item Categories Include:

- Main Settings
- DTMF/Echolink/Weather

Programmable Memory Menu Items (PM0-PM5):

- Common
- Tx/Rx/Repeater
- APRS 1
- APRS 2
- APRS 3

The Programmer Is for so Much More than Just Memory Management.

With the KRS-D710 Programmer you can begin a new “factory fresh” file into which frequencies and option settings are entered. Or, you can read from the radio, store these details on your computer and make changes. Then, with minimal button pushing, send the new configuration back to the radio.

The Programmer allows you to create and save as many files as you want for your radio. Files can even be shared between users via email or the Internet. Any RT Systems Version 4.50 program can open a file from any other RT Systems Version 4.50 programmer... even from a different radio.

Managing all the options of this great little radio becomes easy with the Programmer. The cut, copy, paste and insert features of the Programmer make channel management easier than ever.

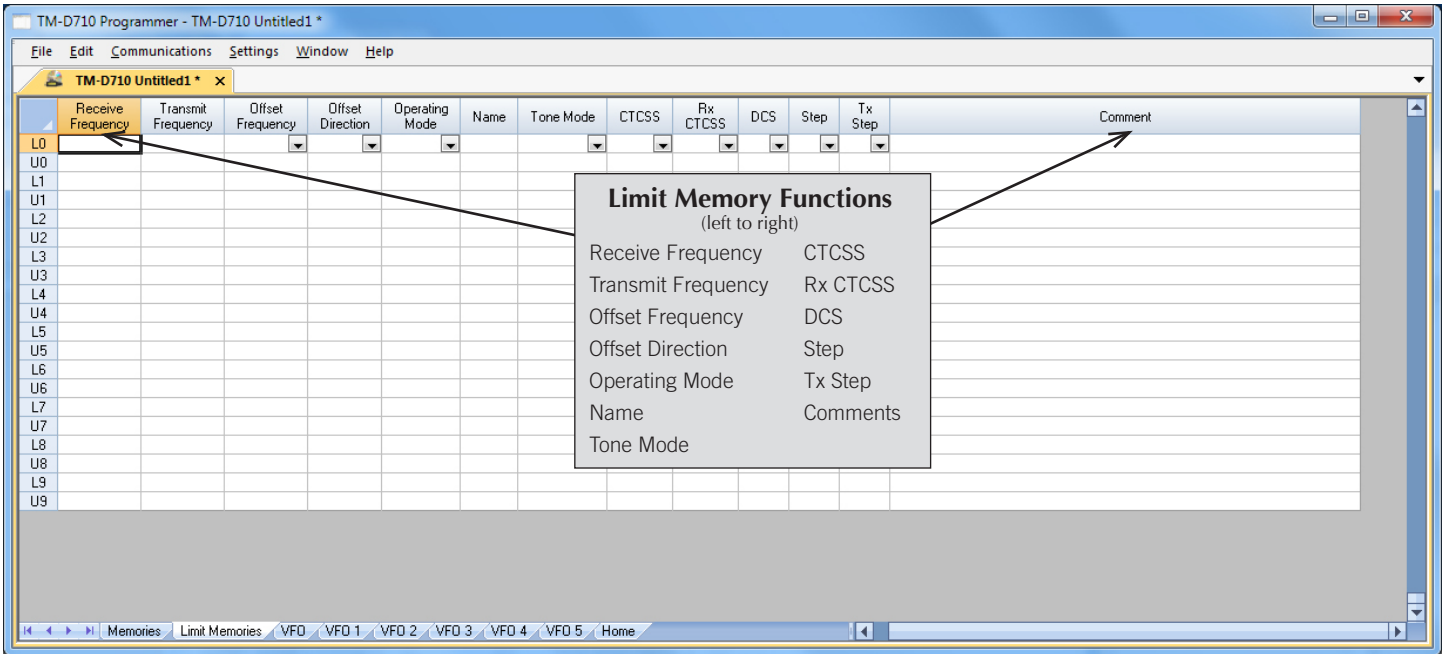
Open more than one file at a time. Memory channel information can be copied from one file to another within the Programmer making it really easy to set up a new file.



Hardware Requirements:

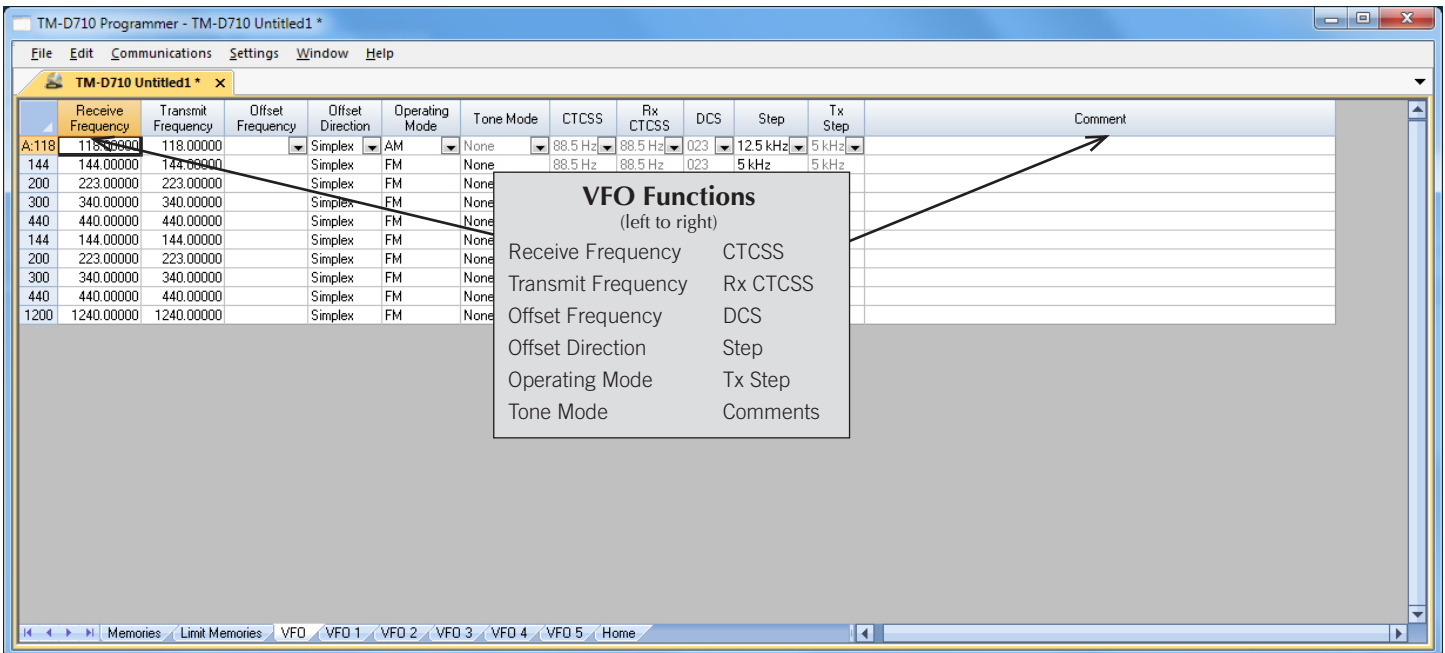
A PC running Windows XP, Vista, Windows 7 (32 or 64 bit) or Windows 8 (desktop version). A CD drive (local or network) for installation. A free USB port. The RT Systems USB-K5G interface cable. The cable connects the radio to the computer from the USB port on the computer to the PC jack on the back of the radio.





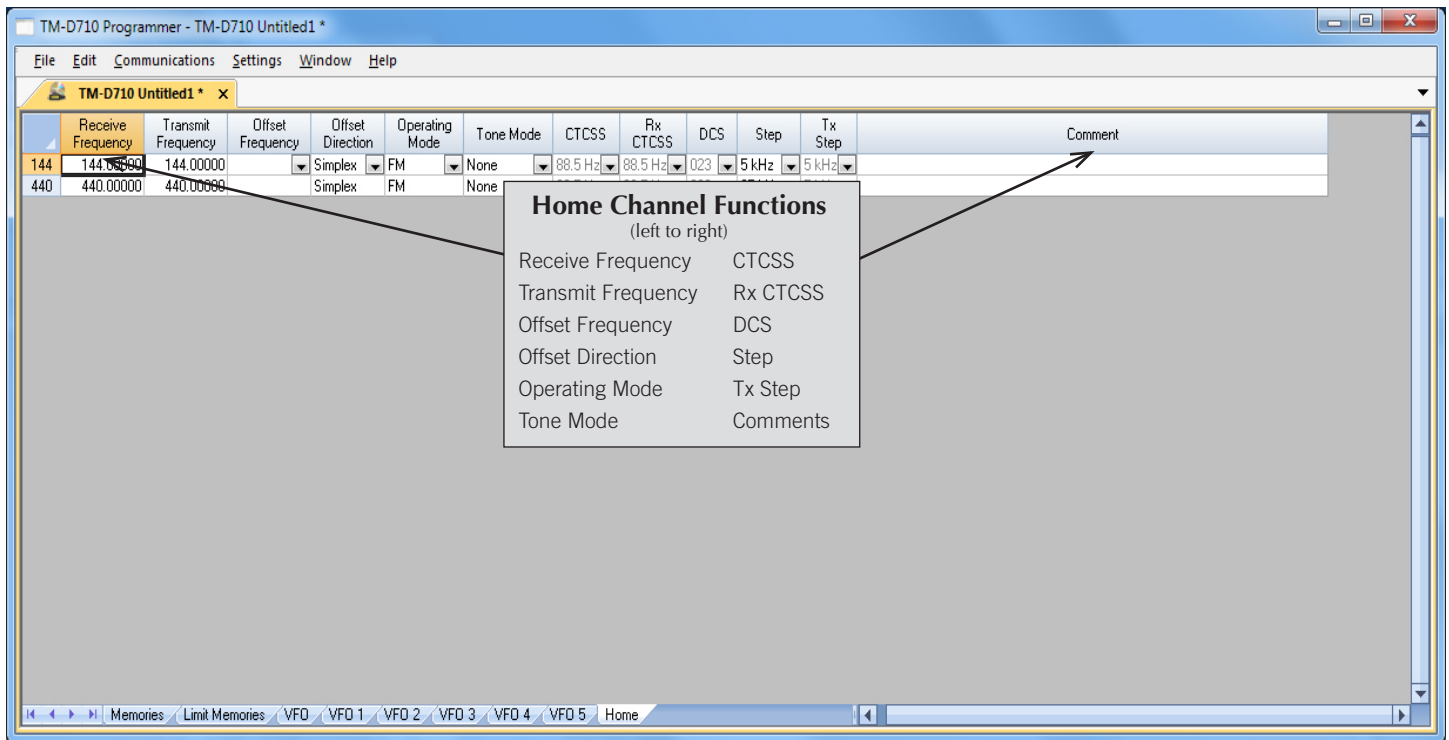
Limit Memories

Limit Memories are used by the radio for Program Scan. Program the same details for Limit Memories as for regular memory channels.



VFO and VFO 1-5

The program makes available the same VFO's as in the radio (usually one per band). The TM-D710 has separate VFOs for each Programmable Memory configuration. Remember these are not real memory channels since the details are lost as soon as you tune the radio manually. There is no one button recall for these. You do not need to program into VFO before programming details into a memory channel. These channels are preprogrammed in the radio and while the frequency can be changed to another within the band, they cannot be left blank.



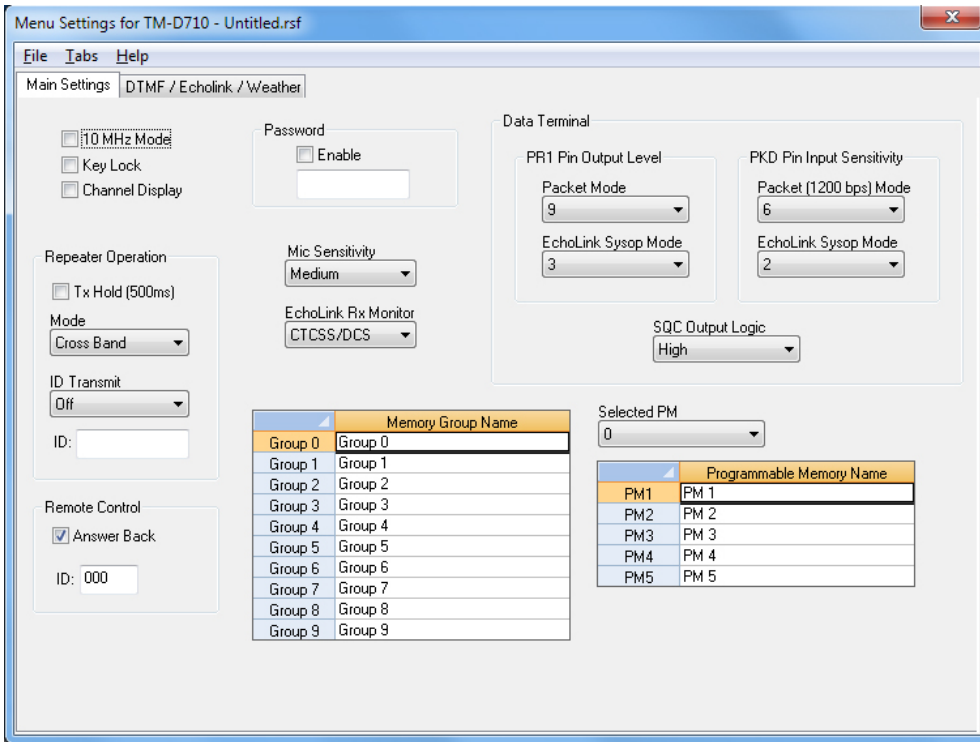
Home

Home/Call channels are special memories accessed through one button recall on the radio. These channels are preprogrammed in the radio and while the frequency can be changed to another within the band, they cannot be left blank.

[Buy Now](#)

Want to Know Even More?

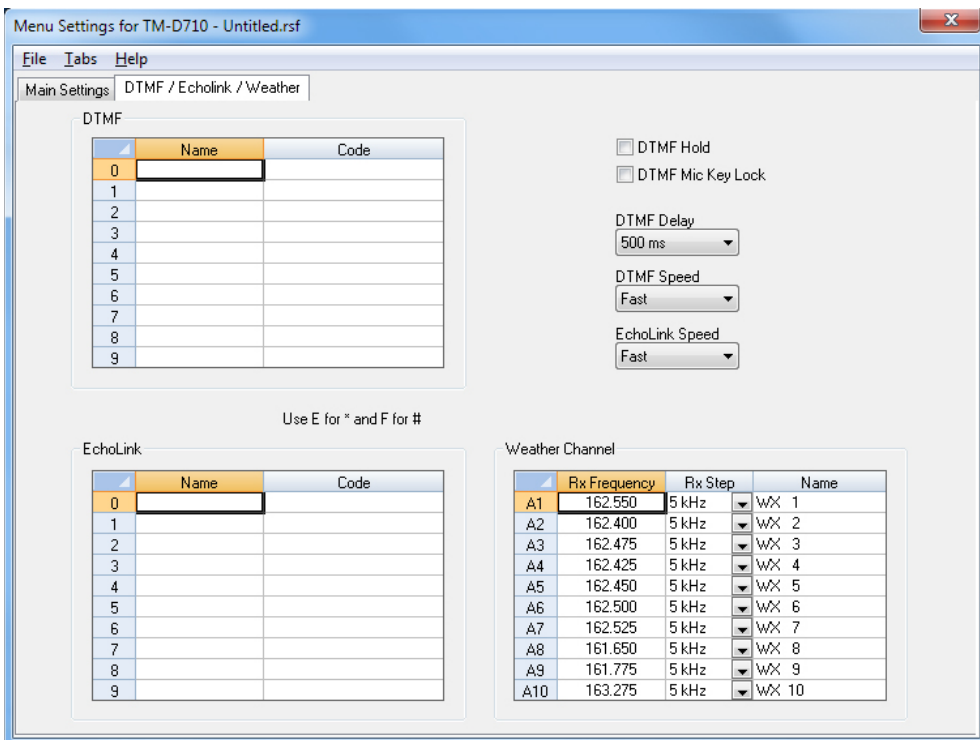
For additional details and tips, click here for the comprehensive WCS-D710 Programmer Help File.



Main Settings

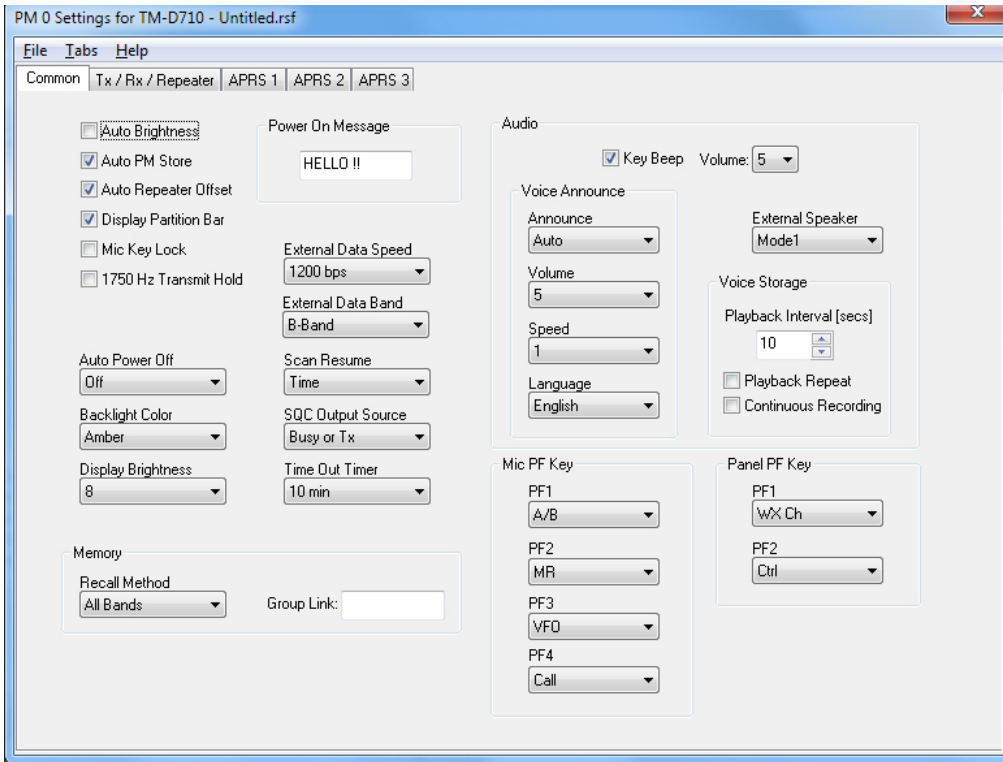
Use these screens to customize other set menu features of the radio. Check boxes toggle features on or off, drop down menus list all selections and blank boxes for personalized entry add to the ease of setting up your radio exactly like you want it.

The entries on the Settings screens are made for you to “Set and Forget”. Once settings are customized, you are prompted to save before exiting. The saved settings will be there every time you create a new frequency file.



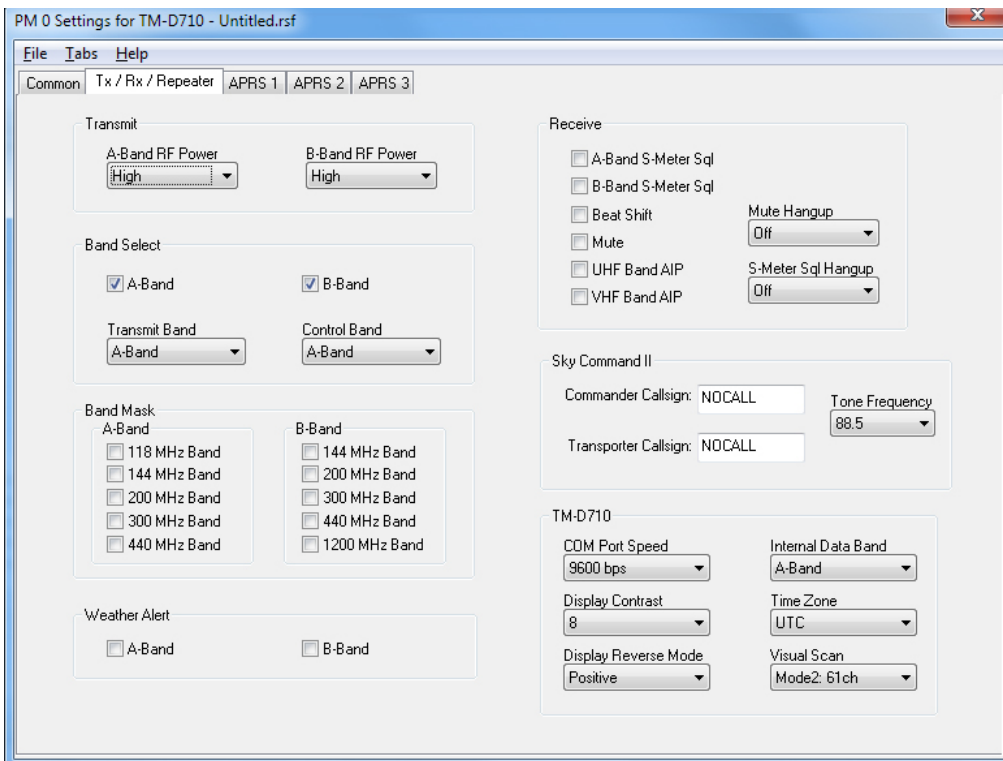
DTMF/Echolink/Weather

Enter DTMF memories and options, Echolink tones and weather channel names.



Common

Use these screens to customize other set menu features of the radio. These options are set separately in each Programmable Memory for six separate personalized configurations.

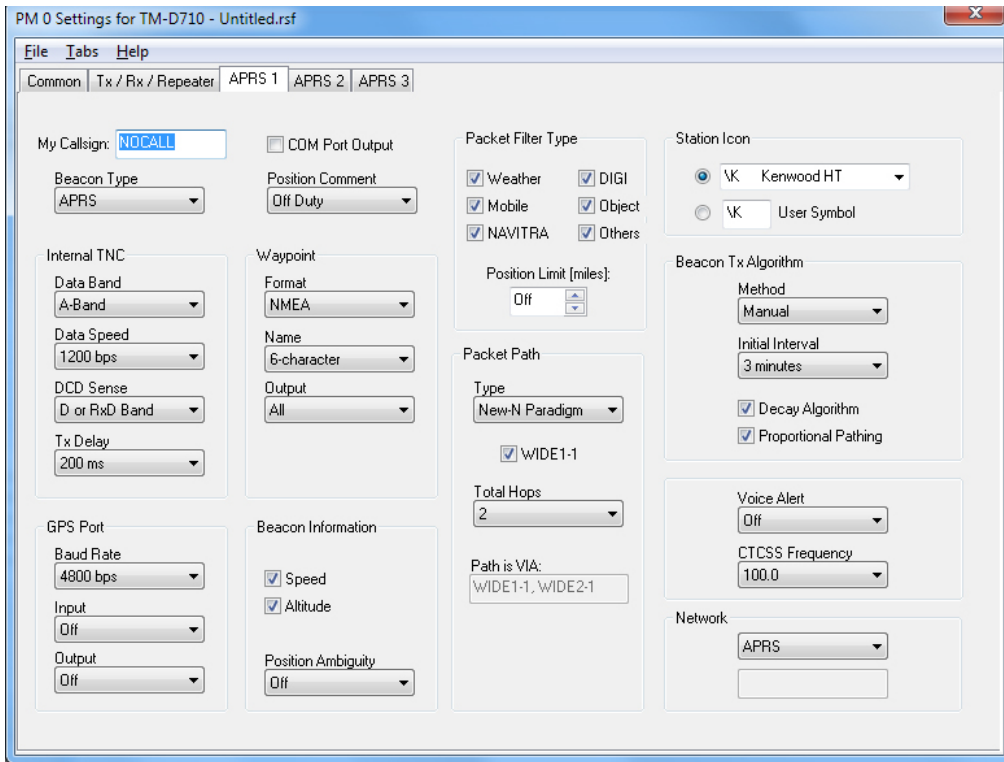


Tx/Rx/Repeater

Customize details for other options specific to radio functions in each Programmable Memory. Kenwood offers lots of options to personalize your radio in six different configurations.

Band Mask

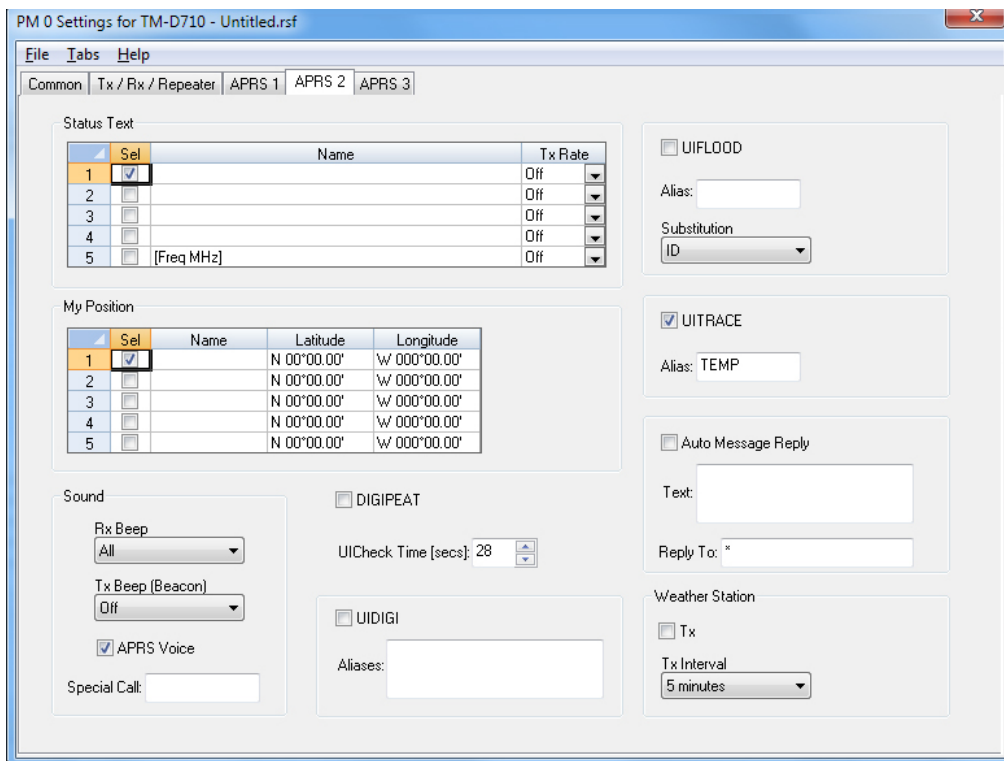
This option hides frequencies on the left and right sides of the radio. Use it to isolate 2M (144MHz Band) on one side and 440MHz on the other by checking the others in each list.



APRS 1

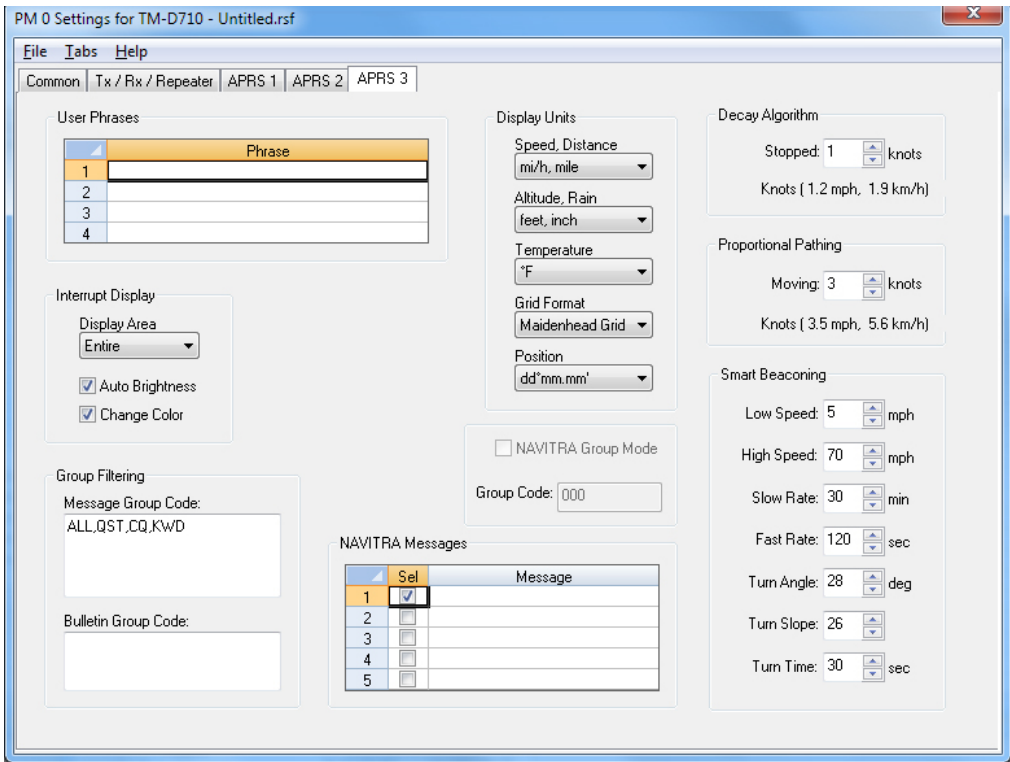
With so many set menu items controlling this advanced function of the radio, the settings file has three screens to hold the check boxes, drop-down lists and edit boxes.

APRS options can be set differently in each Programmable Memory configuration.



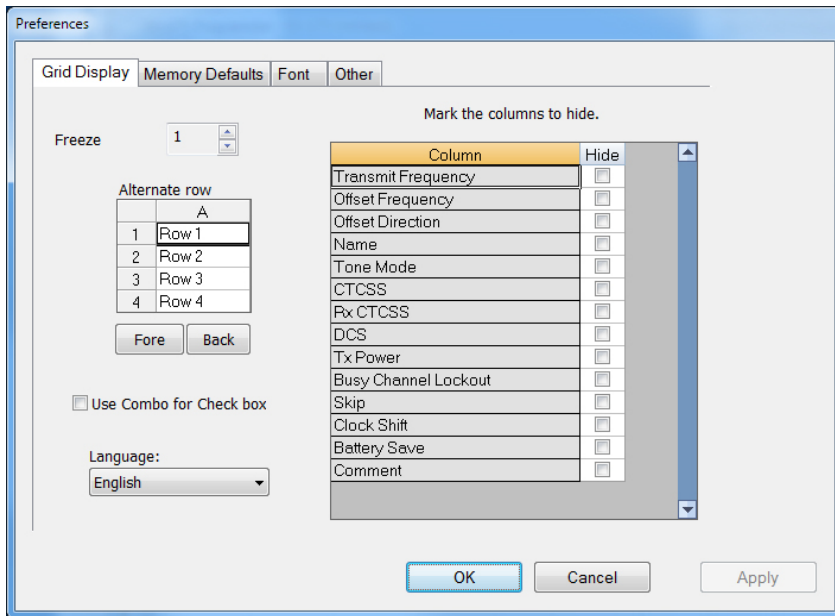
APRS 2

With so many set menu items controlling this advanced function of the radio, the settings file has three screens to hold the check boxes, drop-down lists and edit boxes.



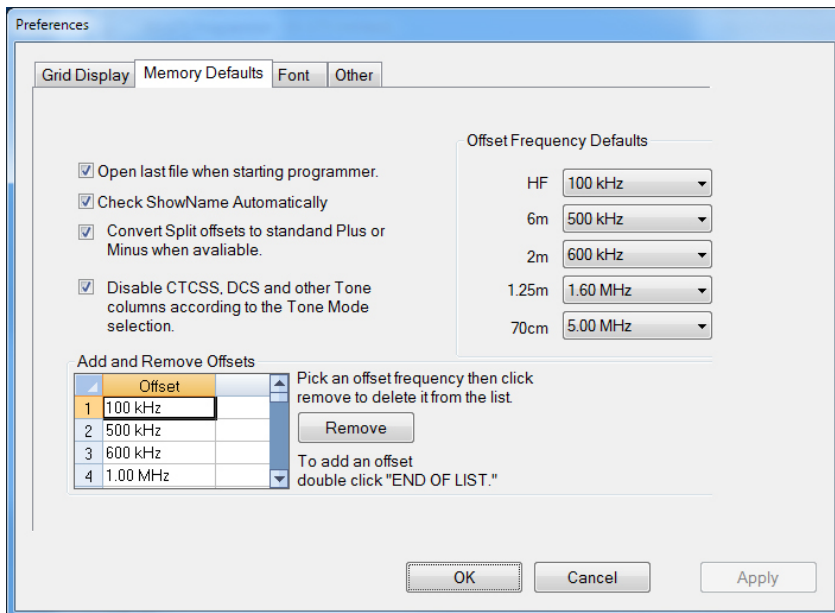
APRS 3

With so many set menu items controlling this advanced function of the radio, the settings file has three screens to hold the check boxes, drop-down lists and edit boxes.



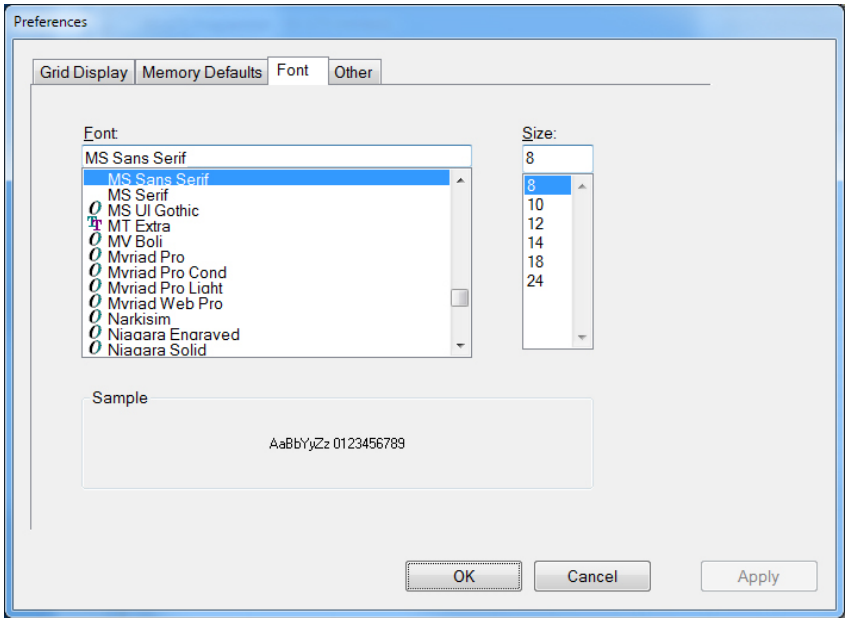
Grid Display

- RT Systems now available in English, French, German, Italian, Spanish, Portuguese and Japanese.
- Set colors for text (Fore) or background (Back) of alternate rows for easier viewing across the columns.
- Freeze columns to keep information on the screen as you scroll to the right of the page.
- Hide columns you don't use. Customize your print-out: hidden columns do not print.
- Use Combo for Check boxes – changes the grid to eliminate check box selections that are disabled on some systems.



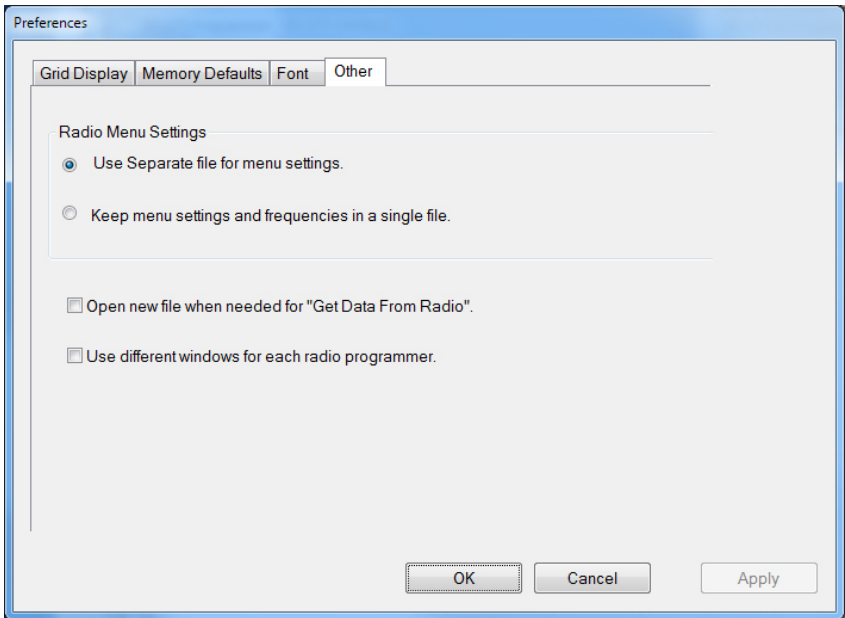
Memory Defaults

- Set options to control auto fill information for memory channel entries.



Font

- Set options to control the font in the column headers of the channel entry screens. Select any font and font size available on your computer.



Other

- Set options to control how the programmer handles the global Radio Menu Settings file.
 - Separate (default) handles the global settings of the radio in a “set and forget” fashion. Once you set these up and save the file you won’t have to reset them for a new frequency file.
 - Together as one gives you the ability to create files that are complete with frequencies and customized global settings. In this mode, each file begins with factory defaults for every option of the radio.
- Check “Get data from Radio” new file option to prevent data loss when you read from your radio into the programmer.
- Check “different window” option to make the programmer for a different radio run in completely separate window rather than in a separate tab of the same window.

Buy Now