

The KRS-D72 Programmer is designed to give you the ease and convenience of programming the memories and set menu options of your radio from your PC.

#### Memory Channels Include:

- 1000 Memory Channels
- 10 Limit Memories (five pair)

#### Other Menu Item Categories Include:

- Common 1
- Common 2
- Tx / Rx / Repeater
- DTMF / Echolink / Weather
- GPS
- APRS 1
- APRS 2
- APRS 3

### *The Programmer Is for so Much More than Just Memory Management.*

With the KRS-D72 Programmer you can begin a new “factory fresh” file into which frequencies and option settings are entered. Or, you can read from the radio, store these details on your computer and make changes. Then, with minimal button pushing, send the new configuration back to the radio.

The Programmer allows you to create and save as many files as you want for your radio. Files can even be shared between users via email or the Internet. Any RT Systems Version 4.50 program can open a file from any other RT Systems Version 4.50 program... even from a different radio.

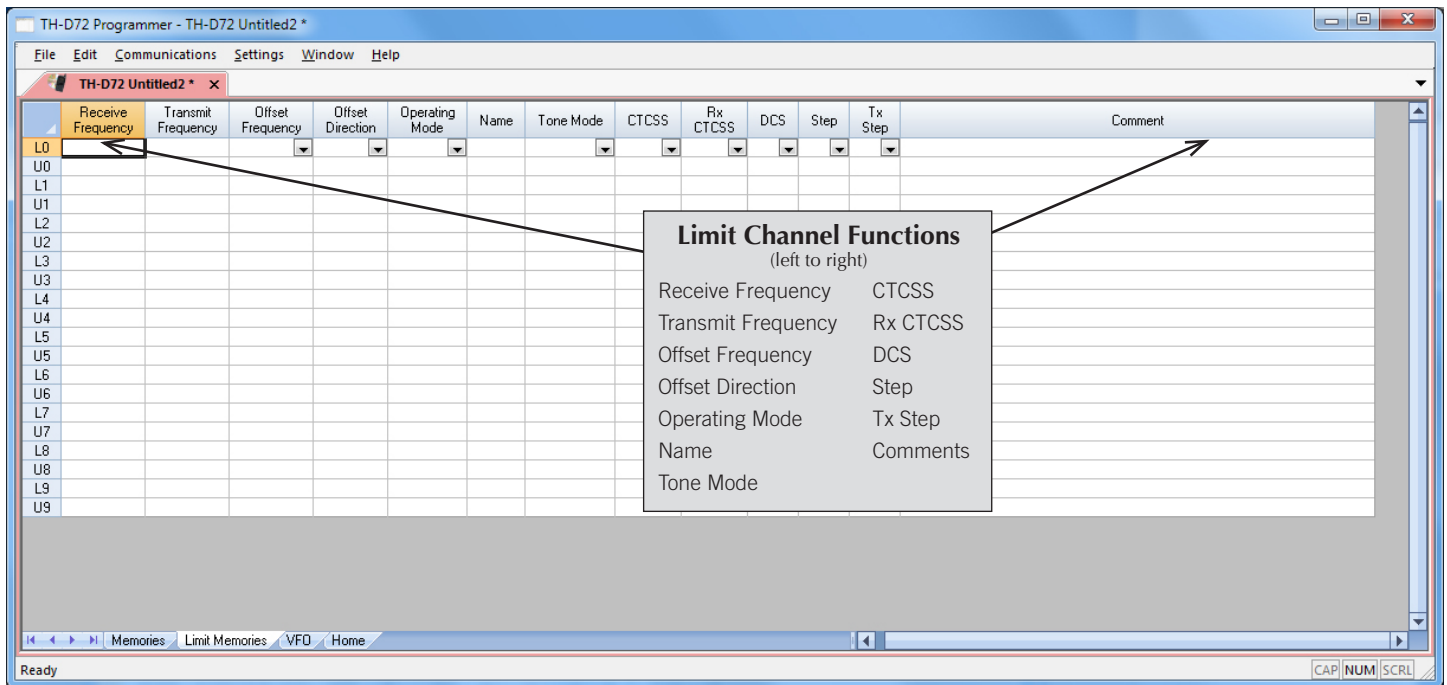
Managing all the options of this great little radio becomes easy with the Programmer. The cut, copy, paste and insert features of the Programmer make channel management easier than ever.

Open more than one file at a time. Memory channel information can be copied from one file to another within the Programmer making it really easy to set up a new file.



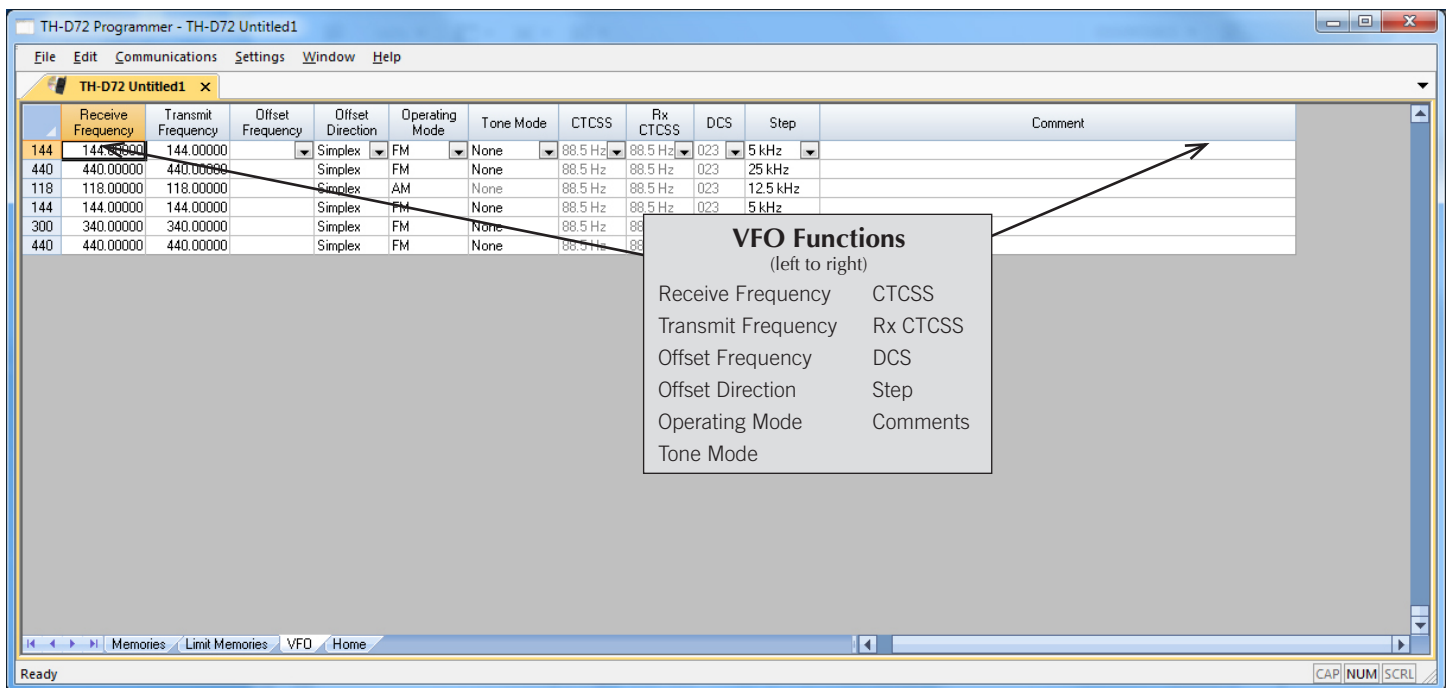
#### Hardware Requirements:

A PC running Windows XP, Vista or Windows 7 (32 or 64 bit). A CD drive (local or network) for installation. A free USB port. The USB cable that came with your radio. The cable connects the radio to the computer from the USB port on the computer to the USB jack on the radio.



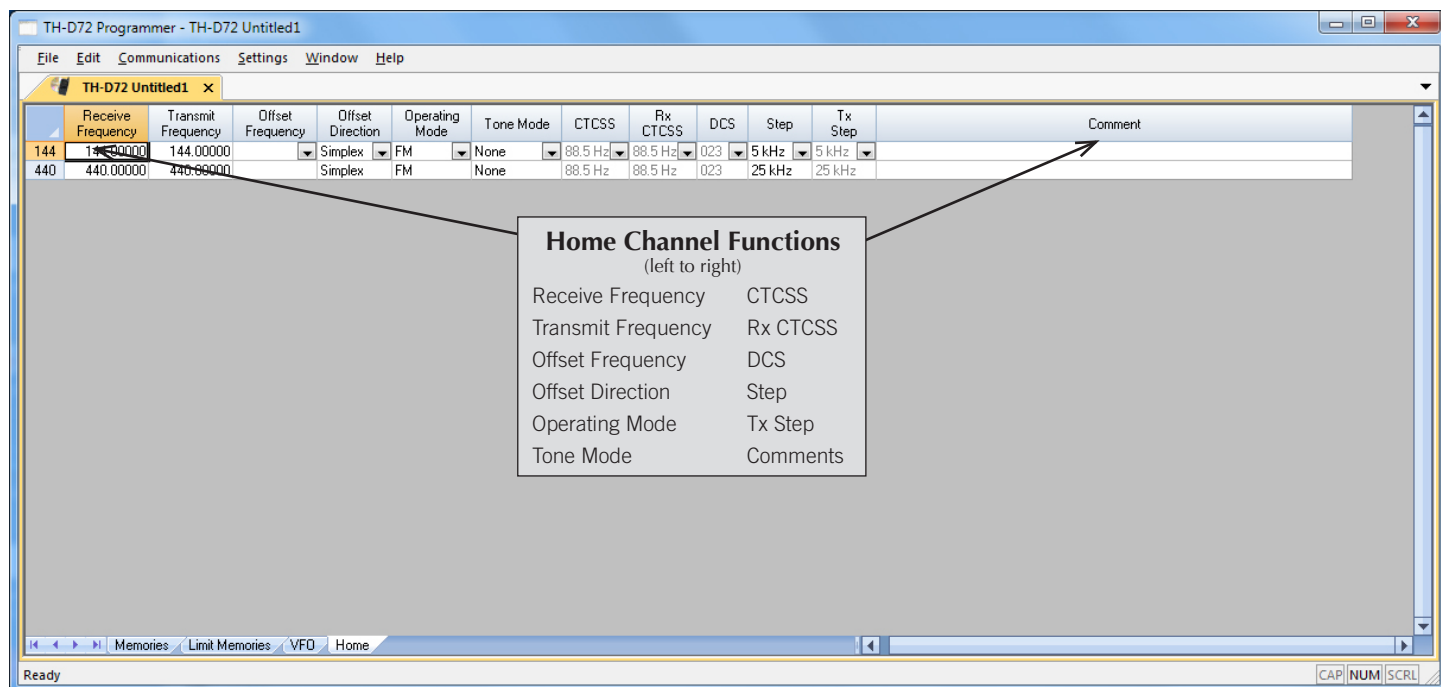
### Limit Memories

Limit Memories are used by the radio for Program Scan. Program the same details for Limit Memories as for regular memory channels.



### VFO

The program makes available the same VFO's as in the radio (usually one per band). Remember these are not real memory channels since the details are lost as soon as you tune the radio manually. There is no one button recall for these. You do not need to program into VFO before programming details into a memory channel. These channels are preprogrammed in the radio and while the frequency can be changed to another within the band, they cannot be left blank.

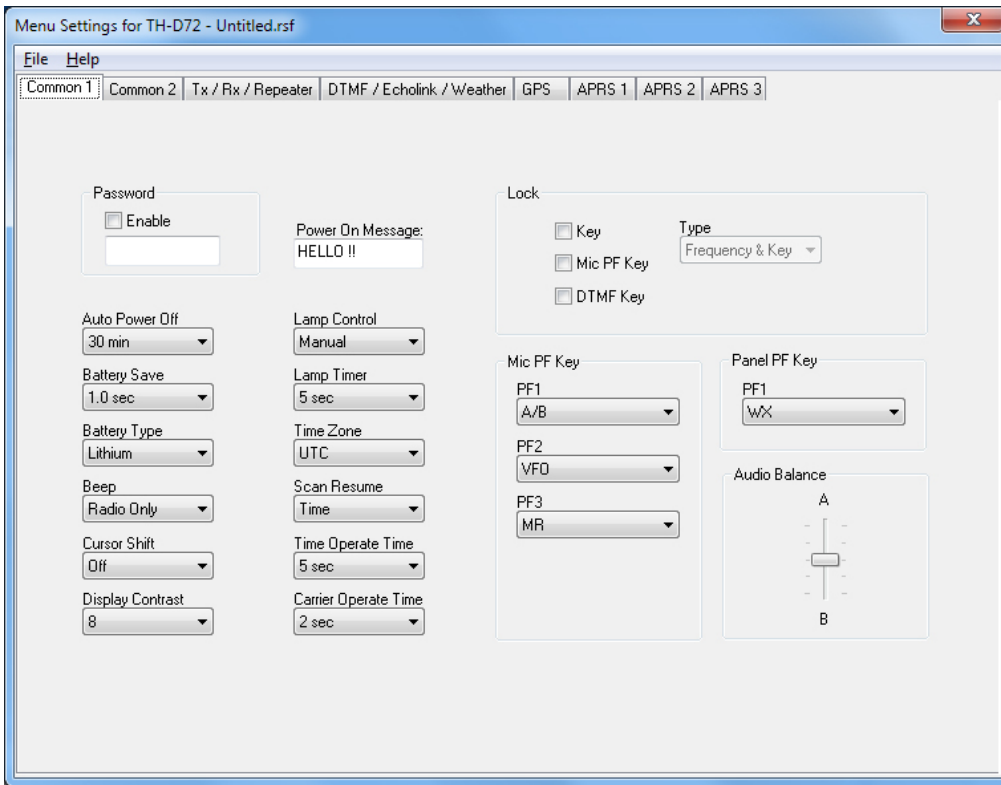


## Home Channel

Home/Call channels are special memories accessed through one button recall on the radio. These channels are preprogrammed in the radio and while the frequency can be changed to another within the band, they cannot be left blank.

[Buy Now](#)

## KRS-D72 Programming Software Radio Option Setting Screens



Menu Settings for TH-D72 - Untitled.rsf

File Help

Common 1 | Common 2 | Tx / Rx / Repeater | DTMF / Echolink / Weather | GPS | APRS 1 | APRS 2 | APRS 3

☐ Enable  
 Password:   
 Power On Message: HELLO !!

Auto Power Off: 30 min  
 Battery Save: 1.0 sec  
 Battery Type: Lithium  
 Beep: Radio Only  
 Cursor Shift: Off  
 Display Contrast: 8

Lamp Control: Manual  
 Lamp Timer: 5 sec  
 Time Zone: UTC  
 Scan Resume: Time  
 Time Operate Time: 5 sec  
 Carrier Operate Time: 2 sec

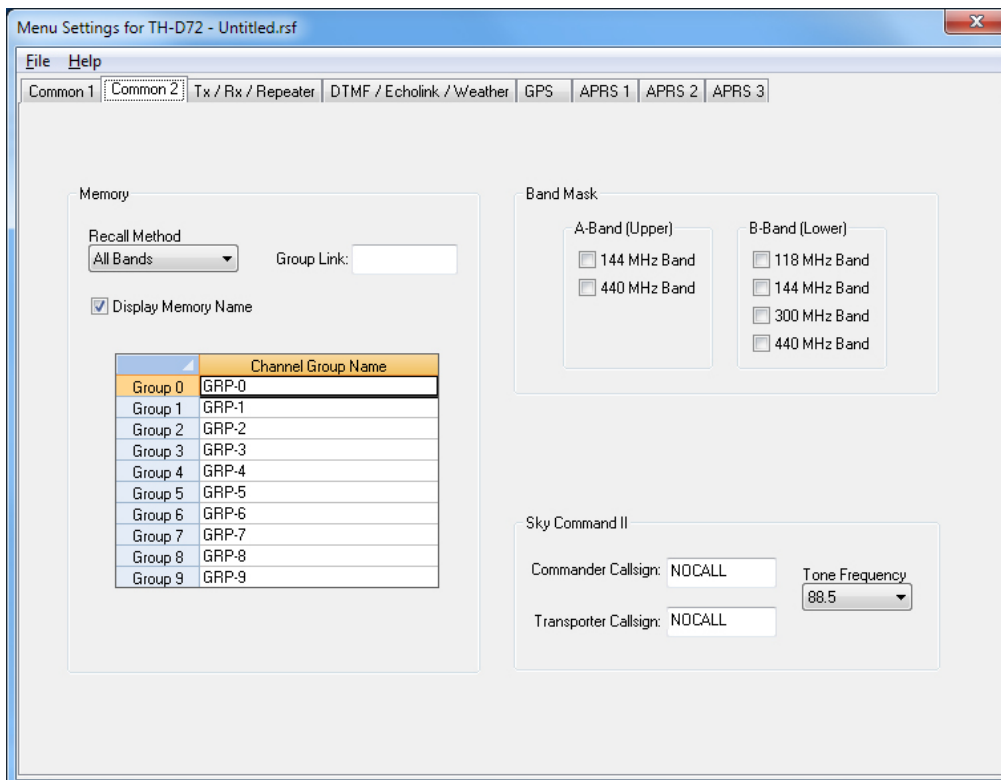
Lock: ☐ Key Type: Frequency & Key  
☐ Mic PF Key  
☐ DTMF Key

Mic PF Key: PF1: A/B, PF2: VFO, PF3: MR  
 Panel PF Key: PF1: WX  
 Audio Balance: A, B

### Common 1

Use these screens to customize other set menu features of the radio. Check boxes toggle features on or off, drop down menus list all selections and blank boxes for personalized entry add to the ease of setting up your radio exactly like you want it.

The entries on the Settings screens are made for you to "Set and Forget". Once settings are customized, you are prompted to save before exiting. The saved settings will be there every time you create a new frequency file.



Menu Settings for TH-D72 - Untitled.rsf

File Help

Common 1 | Common 2 | Tx / Rx / Repeater | DTMF / Echolink / Weather | GPS | APRS 1 | APRS 2 | APRS 3

Recall Method: All Bands  
 Group Link:   
☒ Display Memory Name

	Channel Group Name
Group 0	GRP-0
Group 1	GRP-1
Group 2	GRP-2
Group 3	GRP-3
Group 4	GRP-4
Group 5	GRP-5
Group 6	GRP-6
Group 7	GRP-7
Group 8	GRP-8
Group 9	GRP-9

Band Mask: A-Band (Upper): ☐ 144 MHz Band, ☐ 440 MHz Band  
 B-Band (Lower): ☐ 118 MHz Band, ☐ 144 MHz Band, ☐ 300 MHz Band, ☐ 440 MHz Band

Sky Command II: Commander Callsign: NOCALL, Tone Frequency: 88.5  
 Transporter Callsign: NOCALL

### Common 2

Other Set Menu Options to easily customize.

**Note:** Band Mask is used to isolate 2M and 440MHz operations in Band A and B, respectively.

Menu Settings for TH-D72 - Untitled.rsf

File Help

Common 1 Common 2 Tx / Rx / Repeater DTMF / Echolink / Weather GPS APRS 1 APRS 2 APRS 3

Packet Band: A-Band

Auto Weather Scan: Off

Weather Alert: ☐ A-Band ☐ B-Band

Transmit: ☐ Inhibit

A-Band RF Power: High

B-Band RF Power: High

Time Out Timer: 0.5 Minute

Repeater: ☐ 1750 Hz Transmit Hold ☒ Auto Repeater Offset

Call Key: Call

VOX: ☐ Enable ☐ Vox On Busy

Gain: 4

Delay: 500 ms

Receive: ☐ VHF Band AIP ☐ UHF Band AIP

Beat Shift: Type 1

### Tx/Rx/Repeater

Customize details for other options specific to Packet, Transmit Power, Receive AIP, Weather Alert, Repeater functions and VOX operations on the radio.

Menu Settings for TH-D72 - Untitled.rsf

File Help

Common 1 Common 2 Tx / Rx / Repeater DTMF / Echolink / Weather GPS APRS 1 APRS 2 APRS 3

DTMF

	Name	Code
0		
1		
2		
3		
4		
5		
6		
7		
8		
9		

☐ DTMF Hold

DTMF Delay: 500 ms

DTMF Speed: 100 ms

Echolink

	Name	Code
0		
1		
2		
3		
4		
5		
6		
7		
8		
9		

Use E for \* and F for #

Weather Channel

	Rx Frequency	Rx Step	Name
A1	162.550	5 kHz	WX 1
A2	162.400	5 kHz	WX 2
A3	162.475	5 kHz	WX 3
A4	162.425	5 kHz	WX 4
A5	162.450	5 kHz	WX 5
A6	162.500	5 kHz	WX 6
A7	162.525	5 kHz	WX 7
A8	161.650	5 kHz	WX 8
A9	161.775	5 kHz	WX 9
A10	163.275	5 kHz	WX 10

### DTMF/Echolink/Weather

Enter DTMF memories and options, Echolink tones and weather channel names.

Menu Settings for TH-D72 - Untitled.rsf

File Help

Common 1 Common 2 Tx / Rx / Repeater DTMF / Echolink / Weather **GPS** APRS 1 APRS 2 APRS 3

**Internal GPS**

Operating Mode  
Normal

Battery Saver  
Auto

☐ PC Output

**Log Setup**

Record Method  
Time

Interval [secs]: 10

Distance [miles]: 0.01

**Setup**

Datum  
WGS-84

☐ SBAS

**Sentence**

☒ \$GPGGA  
☐ \$GPGLL  
☒ \$GPRMC  
☐ \$GPVTG  
☐ \$GPZDA  
☒ \$GPGSA  
☒ \$GPGSV

**Track Log**

☐ Wrap When Full

**Target Point**

	Sel	Name	Latitude	Longitude
1	<input checked="" type="checkbox"/>		N 00°00.00'	W 000°00.00'
2	<input type="checkbox"/>		N 00°00.00'	W 000°00.00'
3	<input type="checkbox"/>		N 00°00.00'	W 000°00.00'
4	<input type="checkbox"/>		N 00°00.00'	W 000°00.00'
5	<input type="checkbox"/>		N 00°00.00'	W 000°00.00'

## GPS

Configure GPS function settings.

Menu Settings for TH-D72 - Untitled.rsf

File Help

Common 1 Common 2 Tx / Rx / Repeater DTMF / Echolink / Weather GPS **APRS 1** APRS 2 APRS 3

My Callsign: NOCALL

Beacon Type  
APRS

APRS Lock  
Off

Position Comment  
Off Duty

**Internal TNC**

Data Band  
A-Band

Data Speed  
1200 bps

DCD Sense  
D or Rx Band

Tx Delay  
200 ms

**Waypoint**

Format  
NMEA

Length  
6-character

Output  
All

**Packet Filter Type**

☒ Weather ☒ DIGI  
☒ Mobile ☒ Object  
☒ NAVITRA ☒ Others  
☒ 1-Way

Position Limit [miles]:  
Off

**Station Icon**

☒ \K KENWOOD  
☐ \K User Symbol

**Beacon Tx Algorithm**

Method  
Manual

Initial Interval  
1 min

☒ Decay Algorithm  
☒ Proportional Pathing

**GPS Port**

Baud Rate  
4800 bps

Input  
Off

Output  
Off

**Beacon Information**

☒ Speed  
☐ Altitude

Position Ambiguity  
Off

**Packet Path**

Type  
New-N Paradigm

☒ WIDE1-1

Total Hops  
2

Path is VIA:  
WIDE1-1, WIDE2-1

**PC Port**

☐ COM Port Output

**Voice Alert**

Off

CTCSS Frequency  
100.0

**Network**

APRS

## APRS 1

With so many set menu items controlling this advanced function of the radio, the settings file has three screens to hold the check boxes, drop-down lists and edit boxes.

Menu Settings for TH-D72 - Untitled.rsf

File Help

Common 1 Common 2 Tx / Rx / Repeater DTMF / Echolink / Weather GPS APRS 1 **APRS 2** APRS 3

Status Text

	Sel	Name	Tx Rate
1	<input checked="" type="checkbox"/>		Off
2	<input type="checkbox"/>		Off
3	<input type="checkbox"/>		Off
4	<input type="checkbox"/>		Off
5	<input type="checkbox"/>		Off

My Position

	Sel	Name	Latitude	Longitude
1	<input checked="" type="checkbox"/>		N 00°00.00'	W 000°00.00'
2	<input type="checkbox"/>		N 00°00.00'	W 000°00.00'
3	<input type="checkbox"/>		N 00°00.00'	W 000°00.00'
4	<input type="checkbox"/>		N 00°00.00'	W 000°00.00'
5	<input type="checkbox"/>		N 00°00.00'	W 000°00.00'

Sound

Rx Beep: All

Tx Beep (Beacon): Off

Special Call:

☐ DIGIPEAT (My Callsign)

UICheck Time [secs]: 28

☐ UIDIGI

Aliases:

☐ UIFLOOD

Alias:

Substitution: ID

☐ UITRACE

Alias: TEMP

Auto Message Reply

☐ Reply Delay: 0

Text:

Reply To: \*

Weather Station

☐ Tx Tx Interval: 30 min

## APRS 2

With so many set menu items controlling this advanced function of the radio, the settings file has three screens to hold the check boxes, drop-down lists and edit boxes.

Menu Settings for TH-D72 - Untitled.rsf

File Help

Common 1 Common 2 Tx / Rx / Repeater DTMF / Echolink / Weather GPS APRS 1 APRS 2 **APRS 3**

User Phrases

	Phrase
1	
2	
3	
4	

Interrupt Display

Display Area: Entire Always

Time: 10 sec

Cursor Control: Followed

Group Filtering

Message Group Code: ALL.QST.CQ.KwD

Bulletin Group Code:

Display Units

Speed, Distance: mi/h, mile

Altitude, Rain: feet, inch

Temperature: °F

Grid Format: Maidenhead Grid

Position: dd°mm.mm'

☐ NAVITRA Group Mode

Group Code: 000

Decay Algorithm

Stopped: 1 knots

Knots ( 1.2 mph, 1.9 km/h)

Proportional Pathing

Moving: 1 knots

Knots ( 1.2 mph, 1.9 km/h)

Smart Beaconsing

Low Speed: 5 mph

High Speed: 70 mph

Slow Rate: 30 min

Fast Rate: 120 sec

Turn Angle: 28 deg

Turn Slope: 26

Turn Time: 30 sec

QSY (Frequency)

☐ QSY In Status

☐ Tone/ Narrow

☐ Shift/ Offset

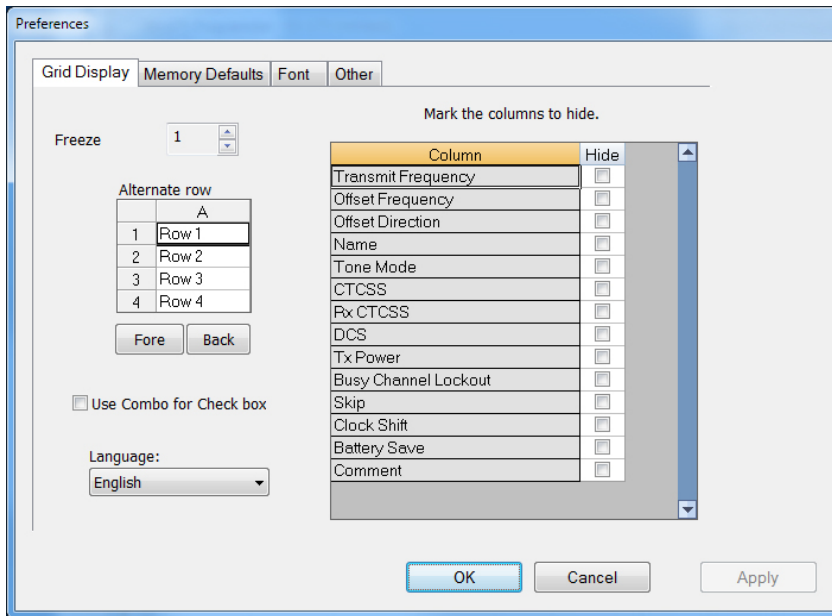
NAVITRA Messages

	Sel	Message
1	<input checked="" type="checkbox"/>	
2	<input type="checkbox"/>	
3	<input type="checkbox"/>	
4	<input type="checkbox"/>	
5	<input type="checkbox"/>	

## APRS 3

With so many set menu items controlling this advanced function of the radio, the settings file has three screens to hold the check boxes, drop-down lists and edit boxes.



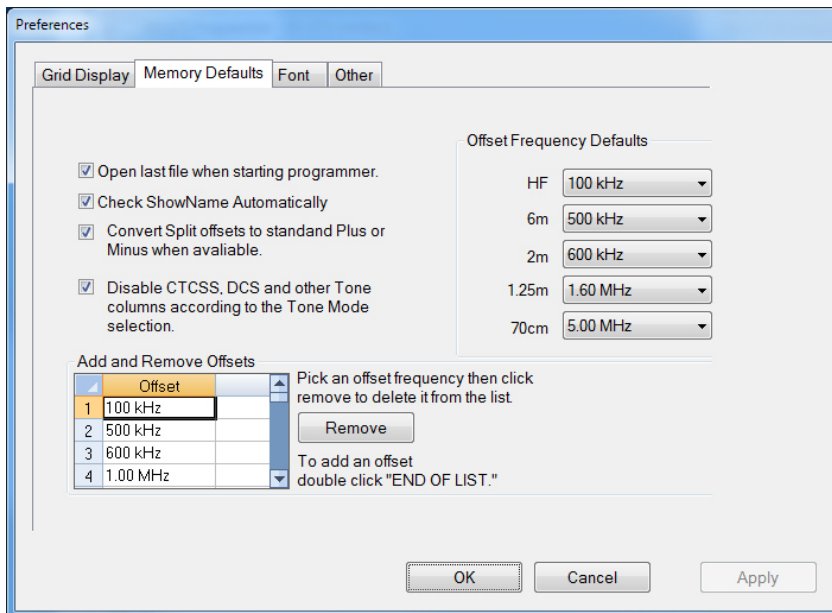


The screenshot shows the 'Grid Display' tab of the Preferences dialog. It includes a 'Freeze' spinner set to 1, an 'Alternate row' table with rows 1-4, 'Fore' and 'Back' buttons, a 'Use Combo for Check box' checkbox, and a 'Language' dropdown set to 'English'. A table titled 'Mark the columns to hide.' lists various fields with checkboxes for hiding them.

Column	Hide
Transmit Frequency	<input type="checkbox"/>
Offset Frequency	<input type="checkbox"/>
Offset Direction	<input type="checkbox"/>
Name	<input type="checkbox"/>
Tone Mode	<input type="checkbox"/>
CTCSS	<input type="checkbox"/>
Rx CTCSS	<input type="checkbox"/>
DCS	<input type="checkbox"/>
Tx Power	<input type="checkbox"/>
Busy Channel Lockout	<input type="checkbox"/>
Skip	<input type="checkbox"/>
Clock Shift	<input type="checkbox"/>
Battery Save	<input type="checkbox"/>
Comment	<input type="checkbox"/>

### Grid Display

- RT Systems now available in English, French, German, Italian, Spanish, Portuguese and Japanese.
- Set colors for text (Fore) or background (Back) of alternate rows for easier viewing across the columns.
- Freeze columns to keep information on the screen as you scroll to the right of the page.
- Hide columns you don't use. Customize your print-out: hidden columns do not print.
- Use Combo for Check boxes – changes the grid to eliminate check box selections that are disabled on some systems.



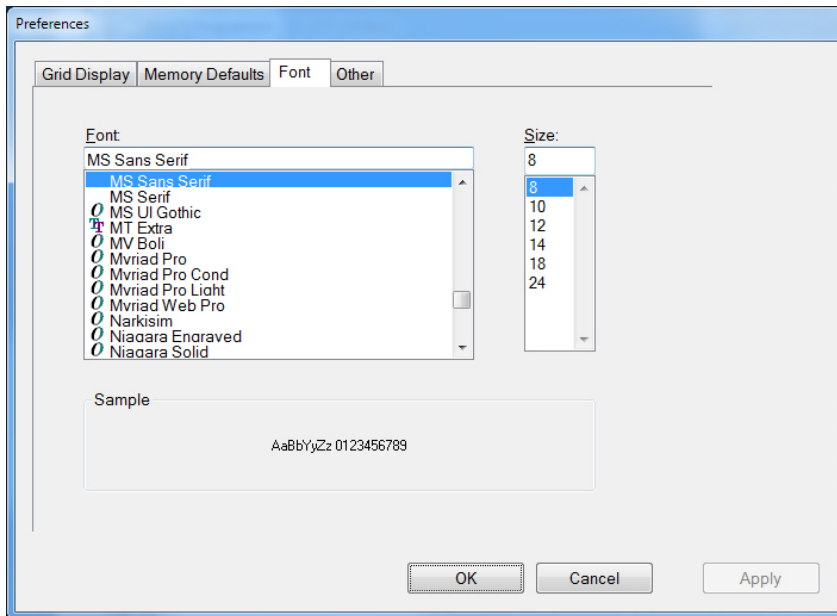
The screenshot shows the 'Memory Defaults' tab of the Preferences dialog. It includes checkboxes for 'Open last file when starting programmer.', 'Check ShowName Automatically', 'Convert Split offsets to standard Plus or Minus when available.', and 'Disable CTCSS, DCS and other Tone columns according to the Tone Mode selection.'. It also features 'Offset Frequency Defaults' for HF, 6m, 2m, 1.25m, and 70cm bands, and an 'Add and Remove Offsets' table.

Offset
1 100 kHz
2 500 kHz
3 600 kHz
4 1.00 MHz

### Memory Defaults

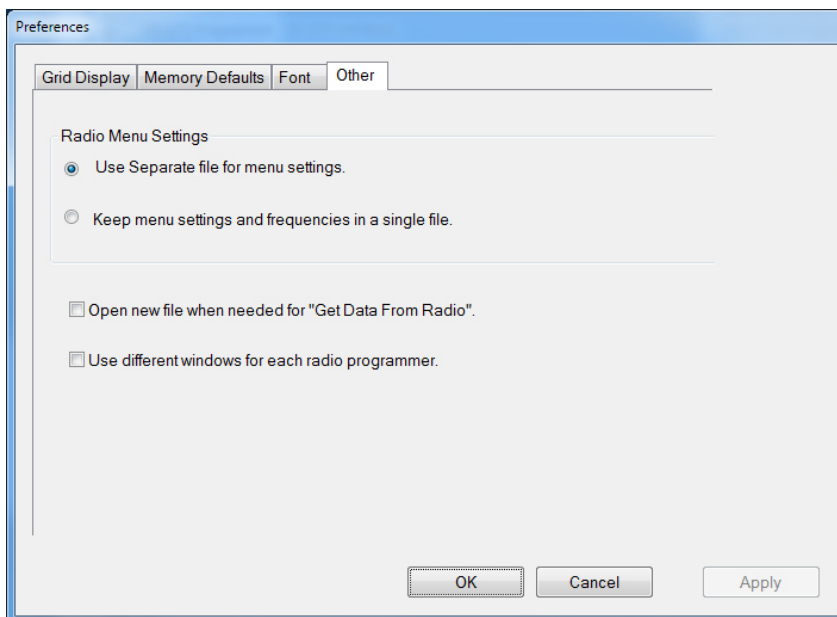
- Set options to control auto fill information for memory channel entries.





#### Font

- Set options to control the font in the column headers of the channel entry screens. Select any font and font size available on your computer.



#### Other

- Set options to control how the programmer handles the global Radio Menu Settings file.
  - Separate (default) handles the global settings of the radio in a “set and forget” fashion. Once you set these up and save the file you won’t have to reset them for a new frequency file.
  - Together as one gives you the ability to create files that are complete with frequencies and customized global settings. In this mode, each file begins with factory defaults for every option of the radio.
- Check “Get data from Radio” new file option to prevent data loss when you read from your radio into the programmer.
- Check “different window” option to make the programmer for a different radio run in completely separate window rather than in a separate tab of the same window.

**Buy Now**