

The LXN-898 Programmer is designed to give you the ease and convenience of programming the memories and set menu options of your radio from your PC.

Memory Channels Include:

- 199 Memory Channels
- 3 VFO Channels

Other Menu Item Categories Include:

- Common 1
- Common 2

The Programmer Is for so Much More than Just Memory Management.

With the LXN-898 Programmer you can begin a new "factory fresh" file into which frequencies and option settings are entered. Or, you can read from the radio, store these details on your computer and make changes. Then, with minimal button pushing, send the new configuration back to the radio.

The Programmer allows you to create and save as many files as you want for your radio. Files can even be shared between users via email or the Internet.

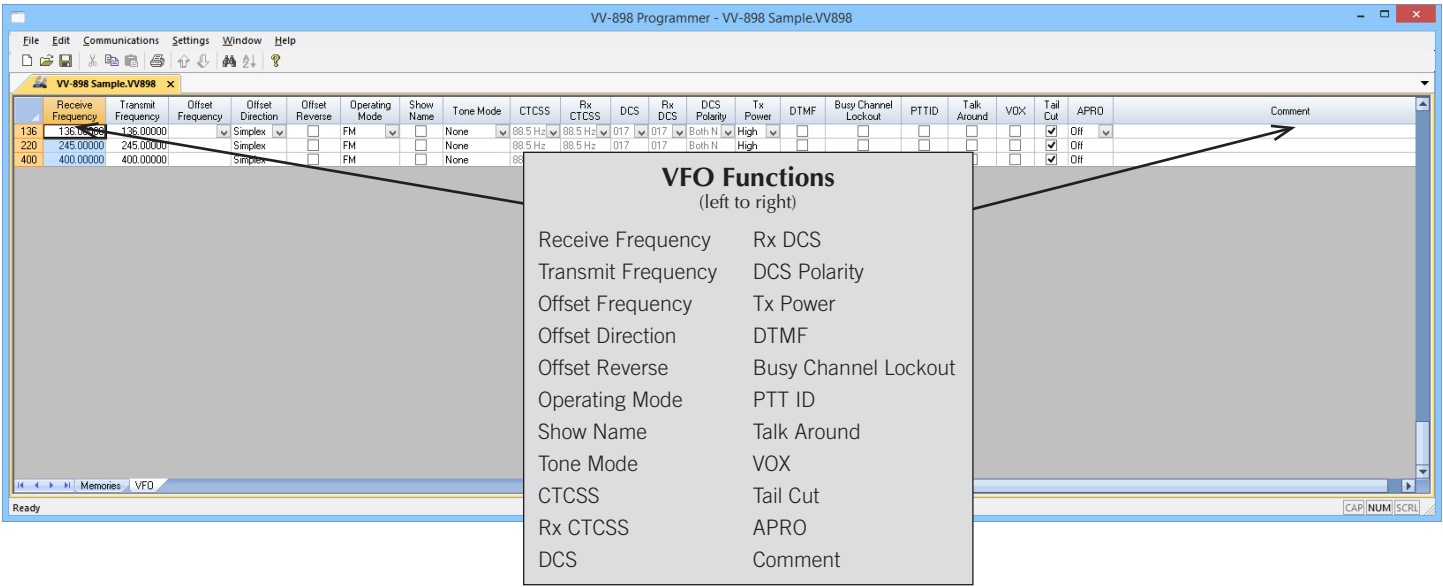
Managing all the options of this radio becomes easy with the Programmer. The cut, copy, paste and insert features of the Programmer make channel management easier than ever.

Open more than one file at a time. Memory channel information can be copied from one file to another within the Programmer making it really easy to set up a new file.

Hardware Requirements:

A PC running Windows XP (SP3), Vista, Windows 7 (32 or 64 bit) or Windows 8 or 8.1 (full version). CD drive for installation. Local USB port and RT Systems USB-30 interface cable (6' cable length). The cable connects the radio to the computer from the USB port on the computer to the Mic jack on the radio. Internet connection for update at end of software installation.





VFO

The program makes available the same VFOs as in the radio (usually one per band). Remember these are not real memory channels since the details are lost as soon as you tune the radio manually. There is no one button recall for these. You do not need to program into VFO before programming details into a memory channel. These channels are preprogrammed in the radio and while the frequency can be changed to another within the band, they cannot be left blank.

Menu Settings for VV-898 - Untitled.rsf

File Tabs Help

Common 1 Common 2

☐ Alarm Key
☐ Battery Save
☒ Channel Name Enable
☐ CTCSS/DCS Busy Lock
☐ Dual Watch
☒ FM Dual Watch
☒ FM Enable
☒ FM Scan
☒ Key Beep
☐ Key Lock
☒ Keypad Mic
☒ Open Beep
☐ Roger Beep
☒ Reset Enable
☒ Small Font
☐ Tx Stop

Auto Power Off
 Off

A/B Select
 A Channel

Backlight Brightness
 Continuous

Display Type
 VFO

Display Mode
 Frequency

Key Lock
 K + S

Monitor
 CTCSS/DCS

☐ Radio Time = Computer Time

Power On Message
 VV-808

Open Display
 User Defined

Scan Resume
 Time

Squelch Level
 2

Step
 12.5 kHz

Time Out Timer
 30 seconds

Volume
 4

VOX Gain Level
 6

VOX Delay Time
 1 second

☒ VOX Inhibit on Receive

FM	
VFO	87.500
1	
2	
3	
4	
5	
6	
7	
8	
9	
10	
11	
12	
13	
14	
15	

Common 1 and Common 2

Use these screens to customize other set menu features of the radio. Check boxes toggle features on or off, drop down menus list all selections and blank boxes for personalized entry add to the ease of setting up your radio exactly like you want it.

The entries on the Settings screens are made for you to “Set and Forget”. Once settings are customized, you are prompted to save before exiting. The saved settings will be there every time you create a new frequency file.

Menu Settings for VV-898 - Untitled.rsf

File Tabs Help

Common 1 Common 2

System
 Digit Time
 100 ms
 Digit Space Time
 100 ms
 1st Digit Delay
 0 ms
 Preamble
 600 ms
 * and # Digit Delay
 0 ms
☐ ACK Decode
☒ DTMF Sidetone

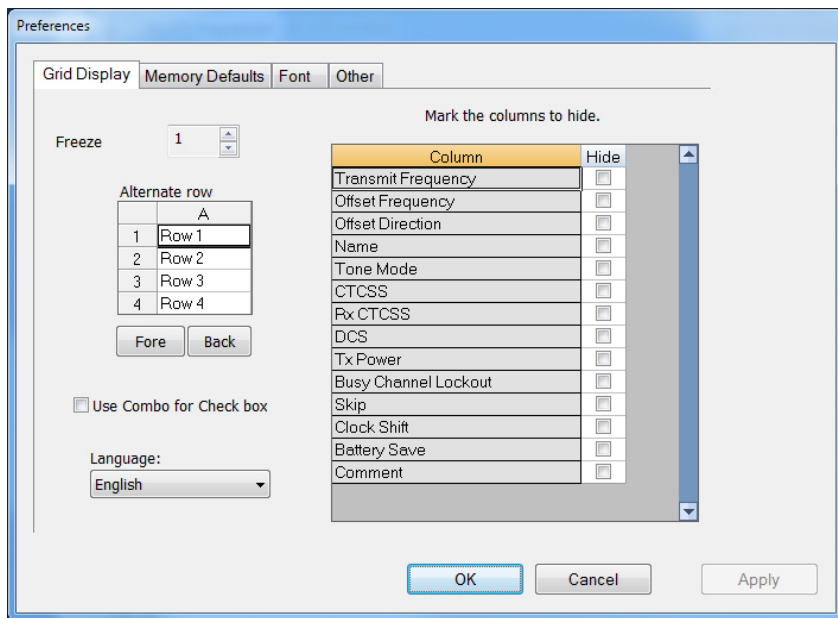
Decode
 Group ID
 A
 Primary ID
 1000
 Auto Reset
 30 seconds
☐ DTMF Beep
☐ Auto ACK
☐ Strip CTCSS/DCS
☐ Display 14 bit ID

Key Assignment
 Long Press Time
 1.5 seconds
 P1 Short
 A/B
 P1 Long
 FM
 P2 Short
 Tx Power
 P2 Long
 Monitor Lock
 P3 Short
 Mute
 P3 Long
 Scan
 M Short
 Off
☒ Menu Enable

PTT ID
☒ Display PTT ID
☐ Voice ID
 PTT ID Start (BOT)
 808
 PTT ID End (EOT)
 808
 PTT ID
 End of TX
 PTT ID Over Time
 500 ms
 Voice Announce
 English
 Voice Time
 8 ms

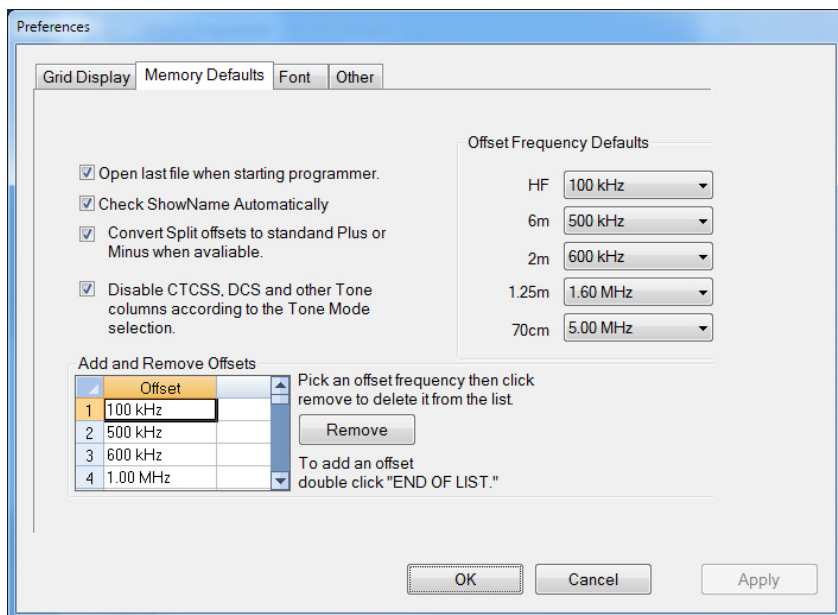
DTMF Number	
0	1001
1	1002
2	
3	
4	
5	
6	
7	
8	
9	
10	
11	
12	
13	
14	
15	

Use E for * and F for #



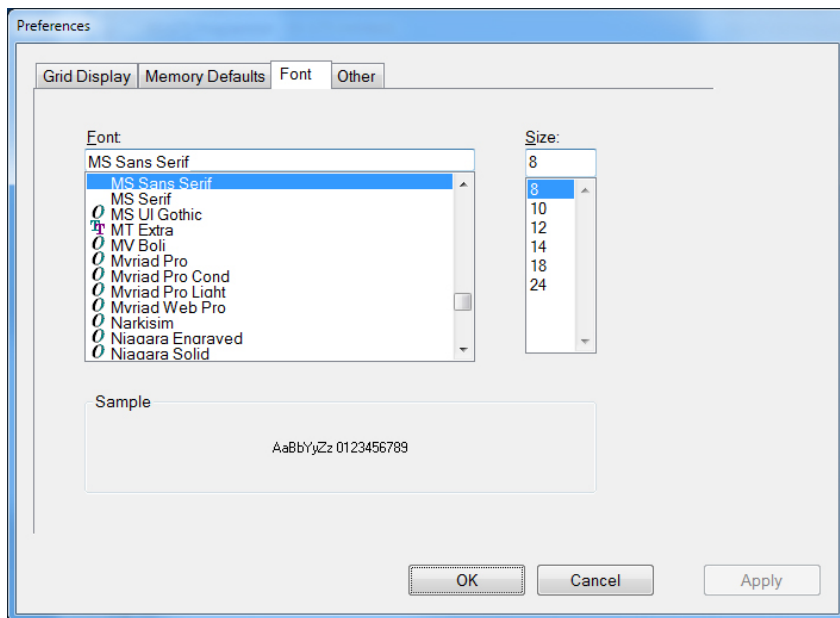
Grid Display

- RT Systems now available in English, French, German, Italian, Spanish, Portuguese and Japanese.
- Set colors for text (Fore) or background (Back) of alternate rows for easier viewing across the columns.
- Freeze columns to keep information on the screen as you scroll to the right of the page.
- Hide columns you don't use. Customize your print-out: hidden columns do not print.
- Use Combo for Check boxes – changes the grid to eliminate check box selections that are disabled on some systems.



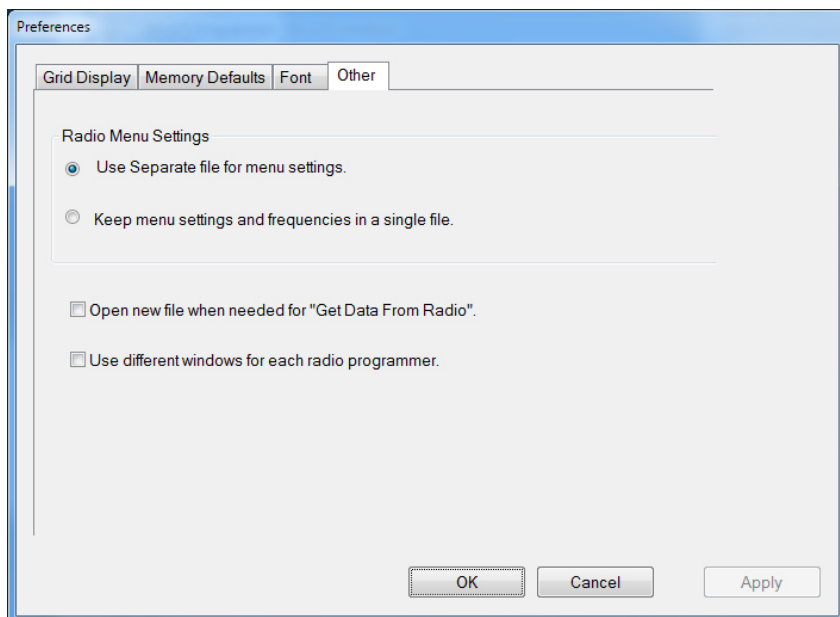
Memory Defaults

- Set options to control auto fill information for memory channel entries.



Font

- Set options to control the font in the column headers of the channel entry screens. Select any font and font size available on your computer.



Other

- Set options to control how the programmer handles the global Radio Menu Settings file.
 - Separate (default) handles the global settings of the radio in a “set and forget” fashion. Once you set these up and save the file you won’t have to reset them for a new frequency file.
 - “Single file” gives you the ability to create files that are complete with frequencies and customized global settings. In this mode, each file begins with factory defaults for every option of the radio.
- Check “Get data from Radio” new file option to prevent data loss when you read from your radio into the programmer.
- Check “different window” option to make the programmer for a different radio run in completely separate window rather than in a separate tab of the same window.

Buy Now