

The screenshot shows the 'RT-9000 Programmer - RT-9000D Sample.RT9000D' window. It features a menu bar (File, Edit, Communications, Settings, Window, Help) and a toolbar. The main area is a table with columns for: Receive Frequency, Transmit Frequency, Offset Frequency, Offset Direction, Channel Spacing, Name, Tone Mode, CTCSS, Rx CTCSS, DCS, Rx DCS, DCS Polarity, Optional Signaling, Optional Code, Squelch Mode, Tx Power, Skip, Step, DTMF PTT ID, 5Tone PTT ID, Scrambler Switch, Busy Channel Lockout, Compander, and Comment. Two callout boxes are present: 'Memory Channel Functions (left to right)' listing parameters like Receive Frequency, Transmit Frequency, etc., and 'Memory Types (left to right)' listing 'Memories', 'Limit Memories', and 'VFO Channels'.

The RET-9000 Programmer is designed to give you the ease and convenience of programming the memories and set menu options of your radio from your PC.

The Programmer works for the VHF, UHF and 220MHz radios. Each file created will be for a specific band just as the radios operate in one band.

**Memory Channels Include:**

- 200 Memory Channels
- 2 Limit Memories (1 pair)
- 1 VFO Channel

**Other Menu Item Categories Include:**

- Common 1
- Common 2
- DTMF
- 2Tone
- 5Tone

**The Programmer Is for so Much More than Just Memory Management.**

With the RET-9000 Programmer you can begin a new “factory fresh” file into which frequencies and option settings are entered. Or, you can read from the radio, store these details on your computer and make changes. Then, with minimal button pushing, send the new configuration back to the radio.

The Programmer allows you to create and save as many files as you want for your radio. Files can even be shared between users via email or the Internet.

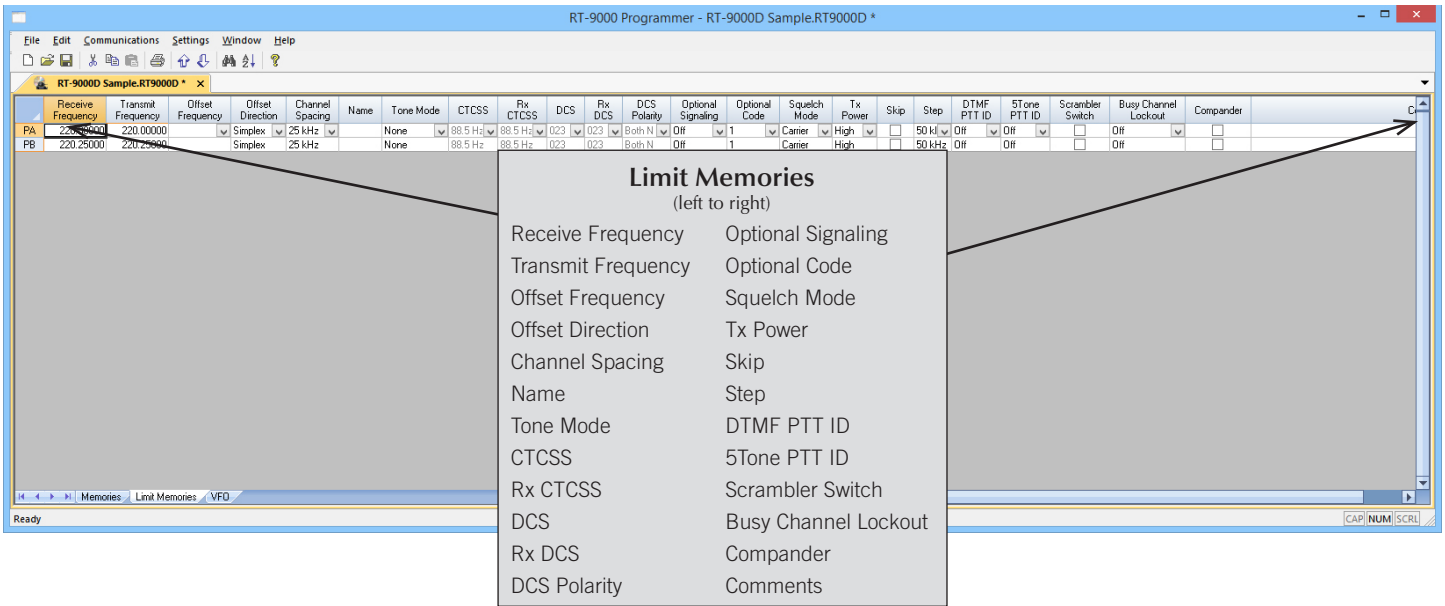
Managing all the options of this great little radio becomes easy with the Programmer. The cut, copy, paste and insert features of the Programmer make channel management easier than ever.

Open more than one file at a time. Memory channel information can be copied from one file to another within the Programmer making it really easy to set up a new file.

**Hardware Requirements:**

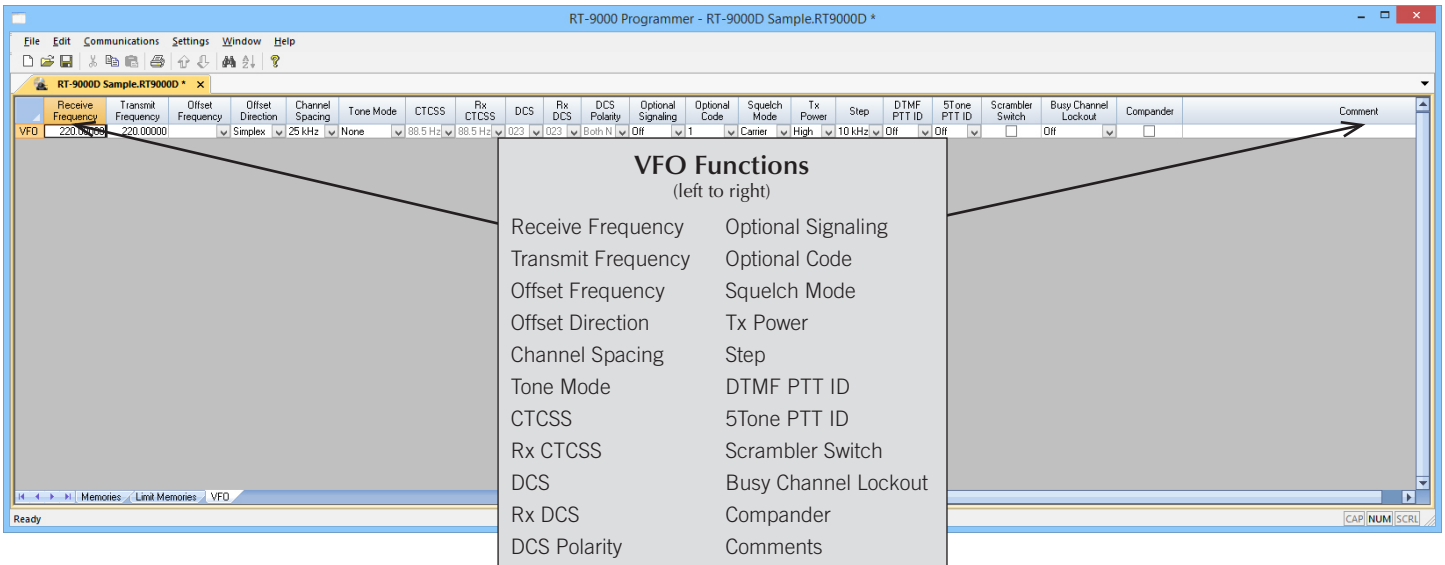
A PC running Windows XP (SP3), Vista, Windows 7 (32 or 64 bit) or Windows 8 or 8.1 (full version), Windows 10. CD drive for installation. Local USB port and RT Systems USB-29A interface cable (6’ length). The cable connects the radio to the computer from the USB port on the computer to the data jack on the radio. Internet connection for software installation.





**Limit Memories**

Limit Memories are used by the radio for Program Scan. Program the same details for Limit Memories as for regular memory channels. Many of the Limit Memories are preprogrammed in the radio and while the frequency can be changed to another within the band, they cannot be left blank.



**VFO**

The program makes available the same VFO's as in the radio (usually one per band). Remember these are not real memory channels since the details are lost as soon as you tune the radio manually. There is no one button recall for these. You do not need to program into VFO before programming details into a memory channel. These channels are preprogrammed in the radio and while the frequency can be changed to another within the band, they cannot be left blank.

Menu Settings for RT-9000 - Untitled.rsf

File Tabs Help

Common 1 Common 2 DTMF 2Tone 5Tone

Power On Message: [ ]

Code (Power On Password):  
 Enable  
 [ ]

Beep  
 Channel Lock  
 Disable Setup Menu  
 Eliminate Squelch Tail  
 Init Inhibit  
 Lock

Auto Power Off: Off

Backlight Color: Blue

Backlight Brightness: 25

Display Mode: Frequency

Display Type: VFO

Memory Channel: 0

Scan Resume: Time

Squelch Key Function: Squelch Off

Squelch Level: 4

Tail Eliminator: Off

Time Out Timer: 3 mins

Tone Burst: 1750 Hz

Tx Power: 65 Watts

Scan Mode

Enable  
 Enter Tone

Priority Channel Select: Off

Priority Channel 1: 0

Priority Channel 2: 0

Revert Channel: Selected

Look Back Time A: 1.5 secs

Look Back Time B: 2.5 secs

Dropout Delay: 3.0 secs

Dwell: 3.0 secs

**Common 1 and Common 2**

Use these screens to customize other set menu features of the radio. Check boxes toggle features on or off, drop down menus list all selections and blank boxes for personalized entry add to the ease of setting up your radio exactly like you want it.

The entries on the Settings screens are made for you to “Set and Forget”. Once settings are customized, you are prompted to save before exiting. The saved settings will be there every time you create a new frequency file.

Menu Settings for RT-9000 - Untitled.rsf

File Tabs Help

Common 1 Common 2 DTMF 2Tone 5Tone

Emergency Information

Alarm: Alarm

ENI Type Select: None

ID: [ ]

Alarm Time: 10 secs

Tx Duration: Off

Rx Duration: Off

ENI Send Select: Assigned Channel

Channel: 0

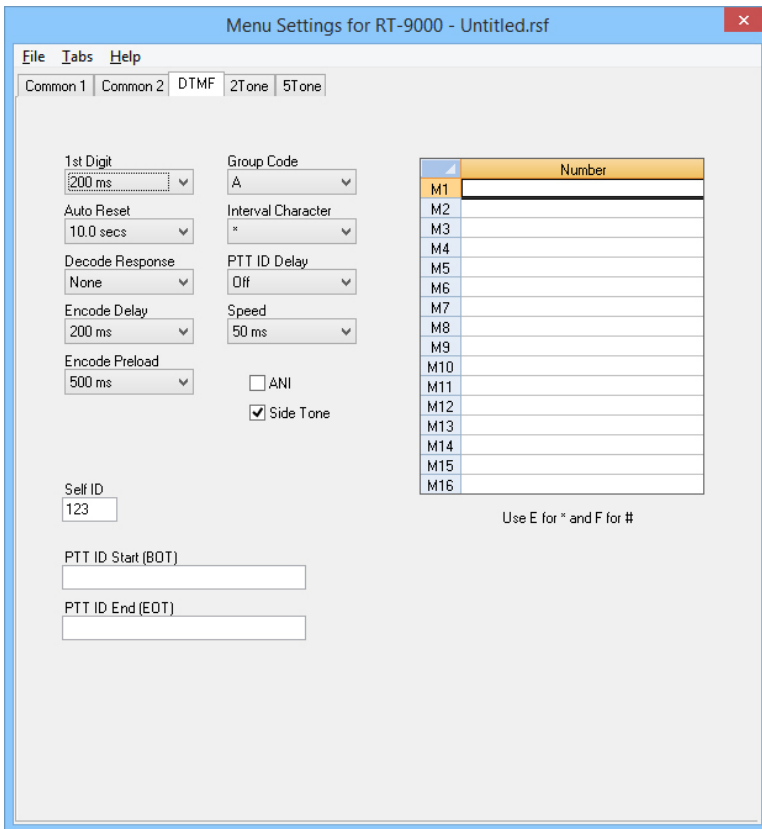
Cycle: Continuous

Communication Note

Call ID	Name
0	
1	
2	
3	
4	
5	
6	
7	
8	
9	
10	
11	
12	
13	
14	
15	
16	
17	
18	
19	
20	

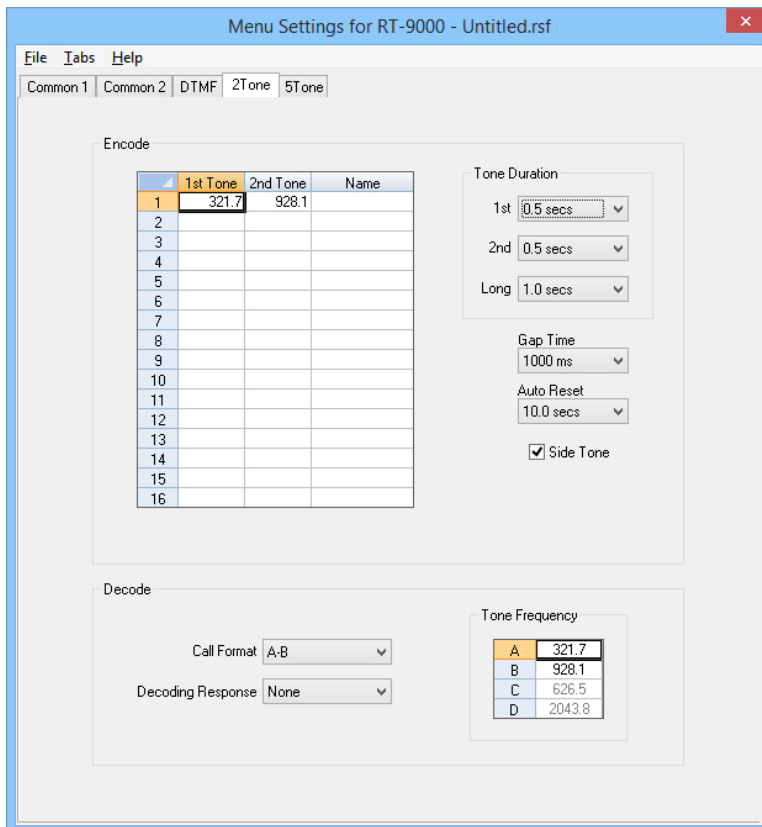
P Key Assignments

	Short Press	Long Press	Func+Px
P1	CALL	CLONE	TX POWER
P2	MONI	BATTERY	COMP
P3	V/M	SCAN	COPY CH
P4	MHZ	SHIFT	DEL CH
P5	CT/DT	DTMF	LOCK



**DTMF**

Enter DTMF memory details and customize options for this function of the radio.



**2Tone**

Set options for a 2Tone paging system.

Menu Settings for RT-9000 - Untitled.rsf

File Tabs Help

Common 1 Common 2 DTMF 2Tone 5Tone

Decode Standard: ZVEI1 Self ID: 12345

Decoding Response: None 1st Delay: 200 ms

Decode Time: 0 ms Auto Reset Time: 10.0 secs

Decode Tone Time: 70 ms PTT ID Delay: Off

Encode Delay: 200 ms Stop Code: F

Encode Preload: 500 ms Stop Time: 200 ms

ZVEI1

0	2400.0 Hz	8	2000.0 Hz
1	1060.0 Hz	9	2200.0 Hz
2	1160.0 Hz	A	2800.0 Hz
3	1270.0 Hz	B	810.0 Hz
4	1400.0 Hz	C	970.0 Hz
5	1530.0 Hz	D	885.0 Hz
6	1670.0 Hz	E	2600.0 Hz
7	1830.0 Hz	F	680.0 Hz

Side Tone

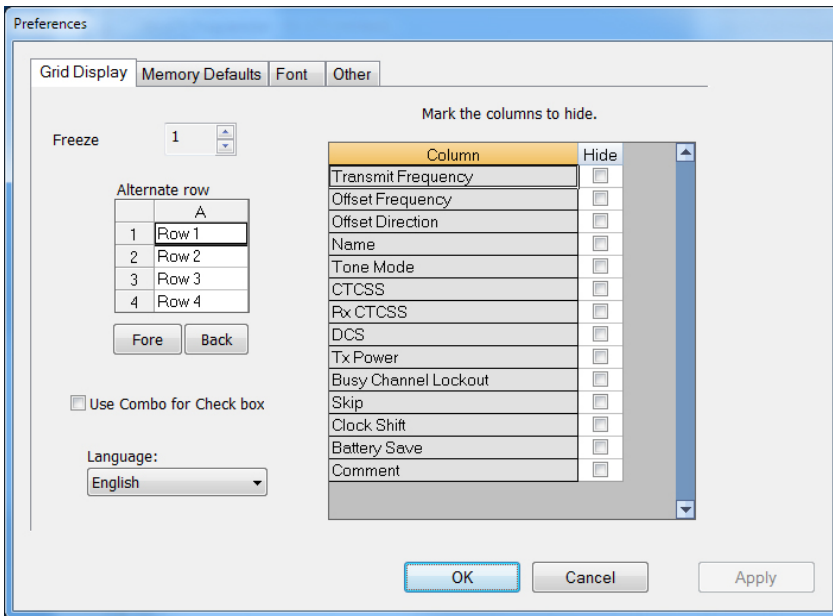
Encode ID	Encode Standard	Encode Time	Name
1	User:12345	ZVEI1	70 ms
2			
3			
4			
5			
6			
7			
8			

PTT ID Encode ID	Encode Standard	Encode Time
BOT		
EOT		

Information ID

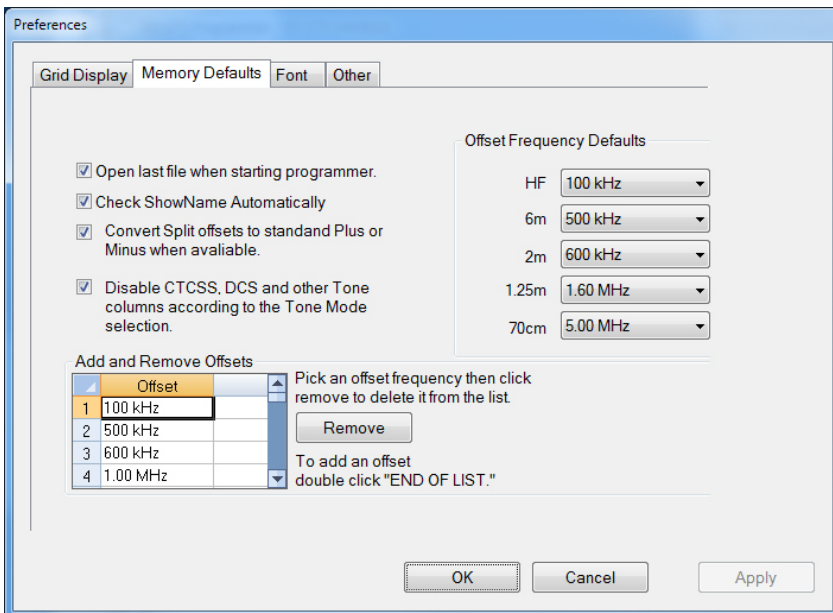
Function Option	Decoding Response	Information ID	Function Name
1	Squelch Off	None	
2	Squelch Off	None	
3	Squelch Off	None	
4	Squelch Off	None	

**5Tone**  
 Set options for a 5Tone paging system.



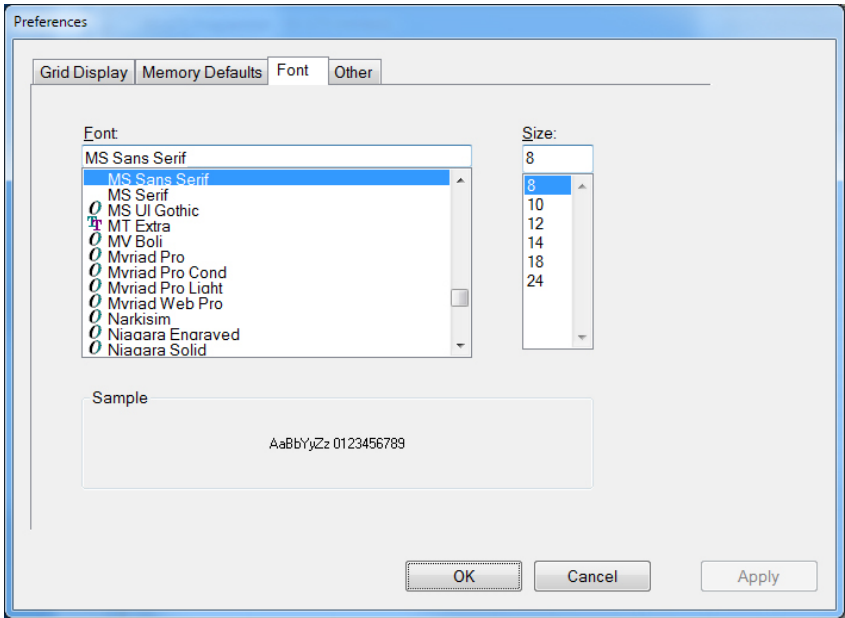
### Grid Display

- RT Systems now available in English, French, German, Italian, Spanish, Portuguese and Japanese.
- Set colors for text (Fore) or background (Back) of alternate rows for easier viewing across the columns.
- Freeze columns to keep information on the screen as you scroll to the right of the page.
- Hide columns you don't use. Customize your print-out: hidden columns do not print.
- Use Combo for Check boxes – changes the grid to eliminate check box selections that are disabled on some systems.



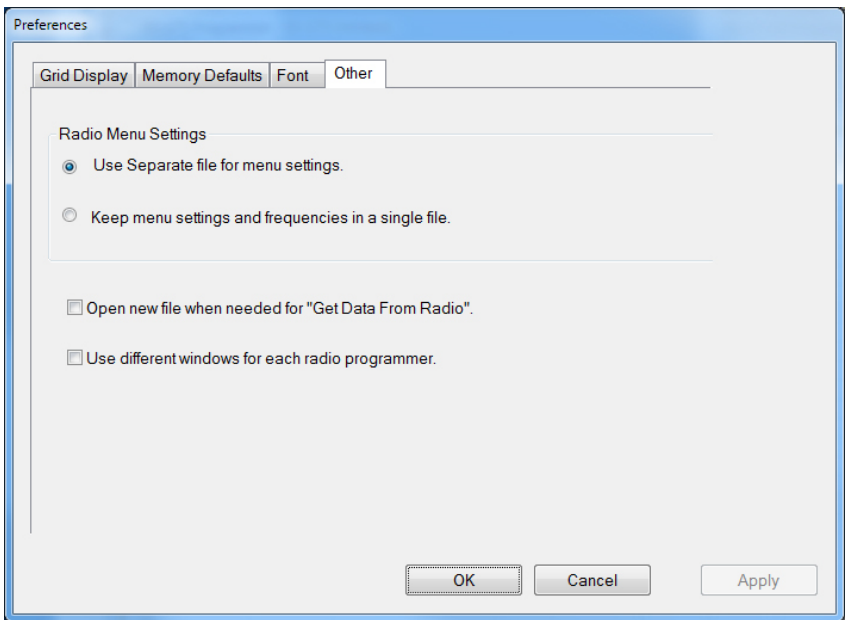
### Memory Defaults

- Set options to control auto fill information for memory channel entries.



**Font**

- Set options to control the font in the column headers of the channel entry screens. Select any font and font size available on your computer.



**Other**

- Set options to control how the programmer handles the global Radio Menu Settings file.
  - Separate (default) handles the global settings of the radio in a “set and forget” fashion. Once you set these up and save the file you won’t have to reset them for a new frequency file.
  - “Single file” gives you the ability to create files that are complete with frequencies and customized global settings. In this mode, each file begins with factory defaults for every option of the radio.
- Check “Get data from Radio” new file option to prevent data loss when you read from your radio into the programmer.
- Check “different window” option to make the programmer for a different radio run in completely separate window rather than in a separate tab of the same window.

**Buy Now**