

The RPS-222 Programmer is designed to give you the ease and convenience of programming the memories and set menu options of your radio from your PC.

Memory Channels Include:

- 200 Memory Channels
- 2 Limit Memories (1 pair)
- 1 VFO Channel

Other Menu Item Categories Include:

- Common 1
- Common 2
- DTMF
- 2Tone
- 5Tone

The Programmer Is for so Much More than Just Memory Management.

With the RPS-222 Programmer you can begin a new “factory fresh” file into which frequencies and option settings are entered. Or, you can read from the radio, store these details on your computer and make changes. Then, with minimal button pushing, send the new configuration back to the radio.

The Programmer allows you to create and save as many files as you want for your radio. Files can even be shared between users via email or the Internet.

Managing all the options of this radio becomes easy with the Programmer. The cut, copy, paste and insert features of the Programmer make channel management easier than ever.

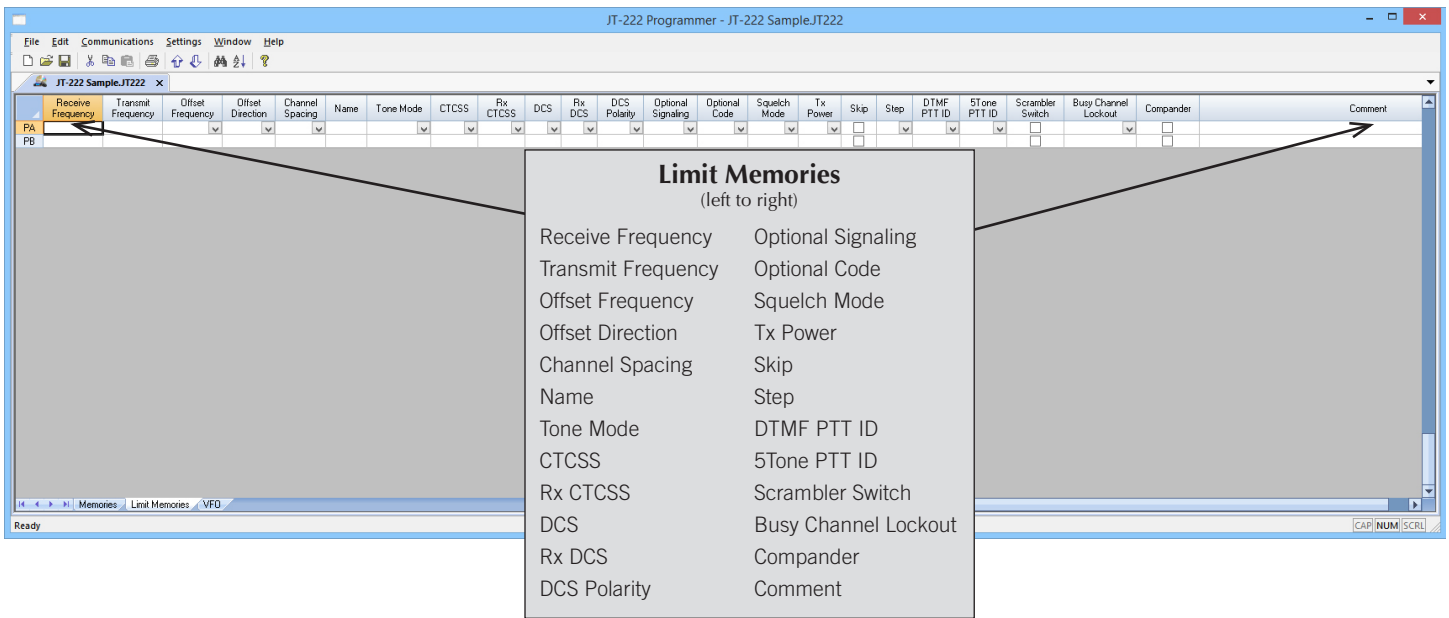
Open more than one file at a time. Memory channel information can be copied from one file to another within the Programmer making it really easy to set up a new file.



Hardware Requirements:

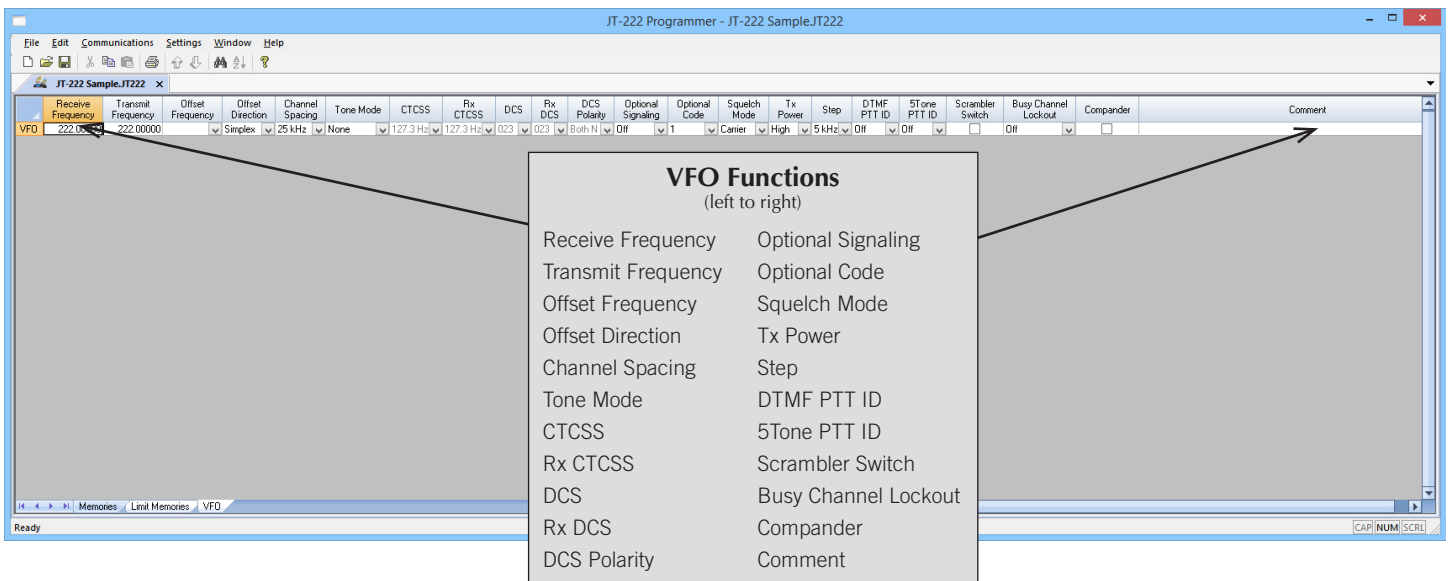
A PC running Windows XP (SP3), Vista, Windows 7 (32 or 64 bit) or Windows 8 or 8.1 (full version). CD drive for installation. Local USB port and RT Systems USB-29A interface cable. The cable connects the radio to the computer from the USB port on the computer to the Data jack on the radio.





Limit Memories

Limit Memories are used by the radio for Program Scan. Program the same details for Limit Memories as for regular memory channels. Many of the Limit Memories are preprogrammed in the radio and while the frequency can be changed to another within the band, they cannot be left blank.



VFO

The program makes available the same VFOs as in the radio (usually one per band). Remember these are not real memory channels since the details are lost as soon as you tune the radio manually. There is no one button recall for these. You do not need to program into VFO before programming details into a memory channel. These channels are preprogrammed in the radio and while the frequency can be changed to another within the band, they cannot be left blank.

Menu Settings for JT-222 - Untitled.rsf

File Tabs Help

Common 1 Common 2 DTMF 2Tone 5Tone

Power On Message: []

Code (Power On Password): []

Enable

Beep

Channel Lock

Disable Setup Menu

Eliminate Squelch Tail

Init Inhibit

Lock

Auto Power Off: Off

Backlight Brightness: 25

Display Mode: Frequency

Display Type: VFO

Memory Channel: 0

Scan Resume: Time

Squelch Key: Off Momentarily

Squelch Level: 4

Tail Eliminator: Off

Time Out Timer: 3 mins

Tone Burst: 1750 Hz

Tx Power: 65 Watts

Scan Mode

Enable

Enter Tone

Priority Channel Select: Off

Priority Channel 1: 0

Priority Channel 2: 0

Revert Channel: Selected

Look Back Time A: 2.0 secs

Look Back Time B: 3.0 secs

Dropout Delay: 3.1 secs

Dwell: 3.1 secs

Common 1 and 2

Use these screens to customize other set menu features of the radio. Check boxes toggle features on or off, drop down menus list all selections and blank boxes for personalized entry add to the ease of setting up your radio exactly like you want it.

The entries on the Settings screens are made for you to "Set and Forget". Once settings are customized, you are prompted to save before exiting. The saved settings will be there every time you create a new frequency file.

Menu Settings for JT-222 - Untitled.rsf

File Tabs Help

Common 1 Common 2 DTMF 2Tone 5Tone

Emergency Information

Alarm: Alarm

ENI Type Select: None

ID: []

Alarm Time: 10 secs

Tx Duration: 1 sec

Rx Duration: 1 sec

ENI Send Select: Assigned Channel

Channel: 0

Cycle: Continuous

Communication Note

Call ID	Name
0	
1	
2	
3	
4	
5	
6	
7	
8	
9	
10	
11	
12	
13	
14	
15	
16	
17	
18	
19	
20	

Menu Settings for JT-222 - Untitled.rsfl

File Tabs Help

Common 1 Common 2 **DTMF** 2Tone 5Tone

1st Digit: 200 ms

Auto Reset: 10.0 secs

Decode Response: None

Encode Delay: 200 ms

Encode Preload: 500 ms

Self ID: 001

PTT ID Start (BOT):

PTT ID End (EOT):

Group Code: A

Interval Character: *

PTT ID Delay: Off

Speed: 50 ms

ANI

Side Tone

Number
M1
M2
M3
M4
M5
M6
M7
M8
M9
M10
M11
M12
M13
M14
M15
M16

Use E for * and F for #

DTMF

Enter DTMF memory details and customize options for this function of the radio.

Menu Settings for JT-222 - Untitled.rsfl

File Tabs Help

Common 1 Common 2 **DTMF** 2Tone 5Tone

Encode

	1st Tone	2nd Tone	Name
1	321.7	928.1	
2			
3			
4			
5			
6			
7			
8			
9			
10			
11			
12			
13			
14			
15			
16			

Tone Duration

1st: 0.5 secs

2nd: 0.5 secs

Long: 1.0 secs

Gap Time: 1000 secs

Auto Reset: 10.0 secs

Side Tone

Decode

Call Format: A-B

Decoding Response: None

Tone Frequency	
A	321.7
B	928.1
C	626.5
D	2043.8

2Tone

Set options for a 2Tone paging system.

Menu Settings for JT-222 - Untitled.rsfl

File Tabs Help

Common 1 Common 2 DTMF 2Tone 5Tone

Decode Standard: ZVEI1 Self ID: 12345

Decoding Response: None Decode Time: 200 ms Decode Tone Time: 70 ms Encode Delay: 200 ms Encode Preload: 500 ms

1st Delay: 200 ms Auto Reset Time: 10.0 secs PTT ID Delay: Off Stop Code: F Stop Time: 200 ms

ZVEI1

0	2400.0 Hz	8	2000.0 Hz
1	1060.0 Hz	9	2200.0 Hz
2	1160.0 Hz	A	2800.0 Hz
3	1270.0 Hz	B	810.0 Hz
4	1400.0 Hz	C	970.0 Hz
5	1530.0 Hz	D	885.0 Hz
6	1670.0 Hz	E	2600.0 Hz
7	1830.0 Hz	F	680.0 Hz

Side Tone

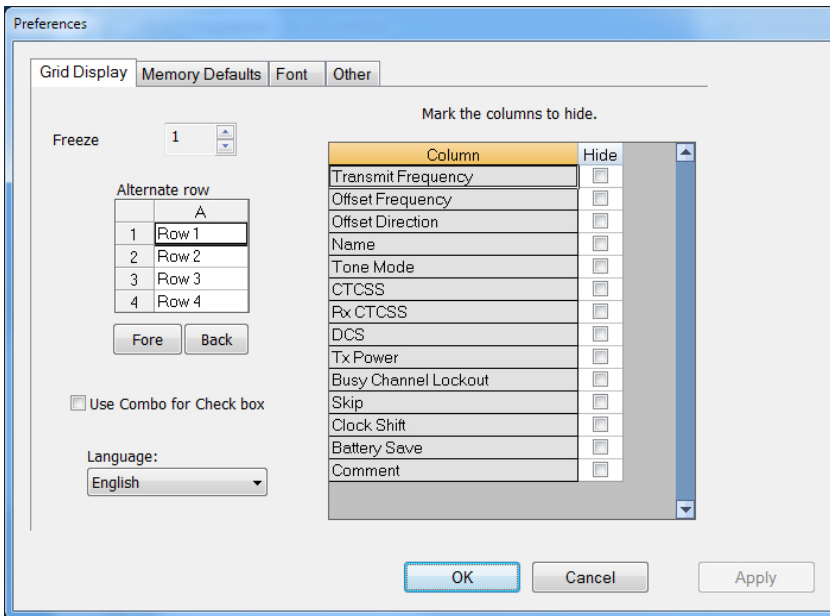
Encode ID	Encode Standard	Encode Time	Name
1	User:12345	ZVEI1	70 ms
2			
3			
4			
5			
6			
7			
8			

PTT ID Encode ID	Encode Standard	Encode Time
BOT		
EOT		

Information ID

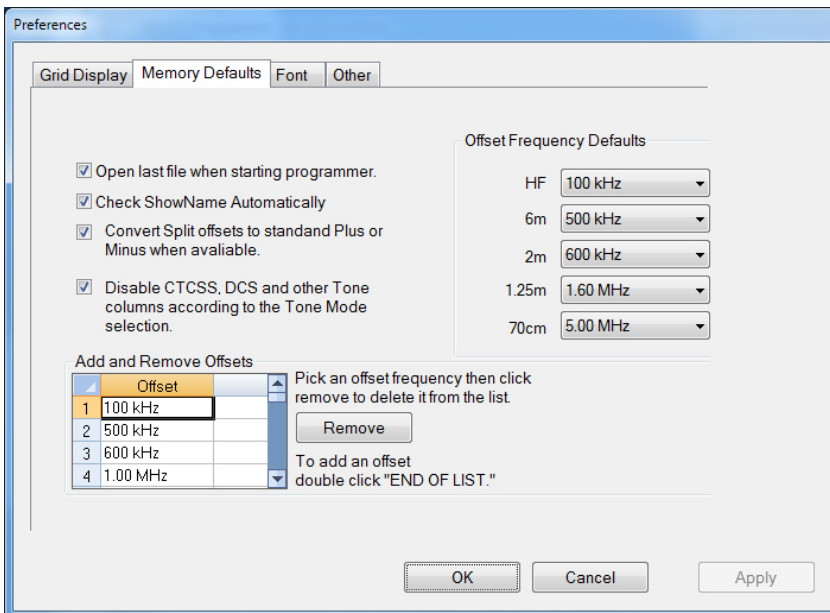
Function Option	Decoding Response	Information ID	Function Name
1	Squelch Off	None	
2	Squelch Off	None	
3	Squelch Off	None	
4	Squelch Off	None	

5Tone
 Set options for a 5Tone paging system.



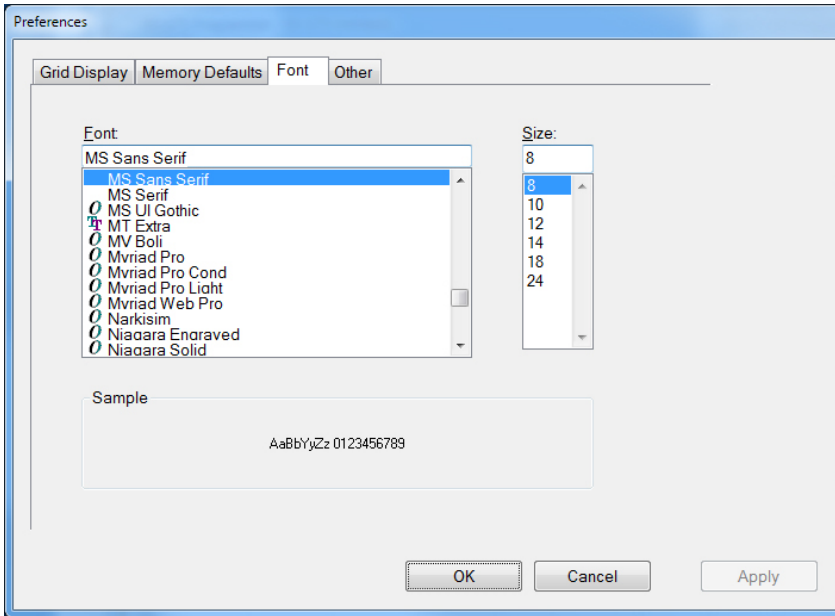
Grid Display

- RT Systems now available in English, French, German, Italian, Spanish, Portuguese and Japanese.
- Set colors for text (Fore) or background (Back) of alternate rows for easier viewing across the columns.
- Freeze columns to keep information on the screen as you scroll to the right of the page.
- Hide columns you don't use. Customize your print-out: hidden columns do not print.
- Use Combo for Check boxes – changes the grid to eliminate check box selections that are disabled on some systems.



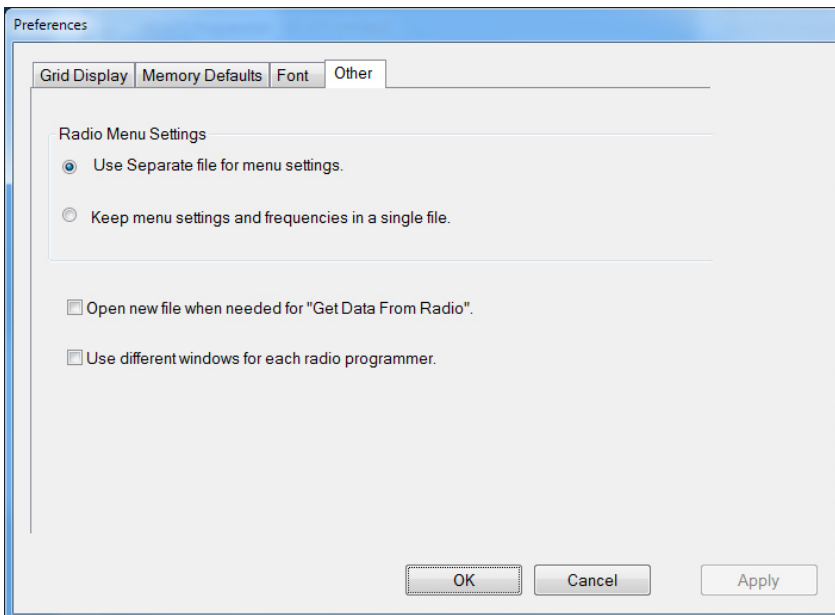
Memory Defaults

- Set options to control auto fill information for memory channel entries.



Font

- Set options to control the font in the column headers of the channel entry screens. Select any font and font size available on your computer.



Other

- Set options to control how the programmer handles the global Radio Menu Settings file.
 - Separate (default) handles the global settings of the radio in a “set and forget” fashion. Once you set these up and save the file you won’t have to reset them for a new frequency file.
 - “Single file” gives you the ability to create files that are complete with frequencies and customized global settings. In this mode, each file begins with factory defaults for every option of the radio.
- Check “Get data from Radio” new file option to prevent data loss when you read from your radio into the programmer.
- Check “different window” option to make the programmer for a different radio run in completely separate window rather than in a separate tab of the same window.

[Buy Now](#)