

The screenshot shows the 'TH-7800 Programmer - TH-7800 Sample.TH7800' window. It features a menu bar (File, Edit, Communications, Settings, Window, Help) and a toolbar. The main area is a table with columns for Receive Frequency, Transmit Frequency, Offset Frequency, Offset Direction, Offset Reverse, Operating Mode, Bandwidth, Name, Show Name, Tone Mode, CTCSS, User CTCSS, DCS, DCS Polarity, Optional Signaling, Optional Code, PTTID, Squelch Mode, Busy Channel Lockout, Emphasis, Clock Shift, Compaander, Scrambler, Talk Around, Tx Power, Skip, and Comment. A callout box titled 'Memory Channel Functions (left to right)' lists: Receive Frequency, Transmit Frequency, Offset Frequency, Offset Direction, Offset Reverse, Operating Mode, Bandwidth, Name, ShowName, Tone Mode, CTCSS, User CTCSS, DCS, DCS Polarity, Optional Signaling, Optional Code, PTTID, Squelch Mode, Busy Channel Lockout, Emphasis, Clock Shift, Compaander, Scrambler, Talk Around, Tx Power, Skip, Comment. Another callout box titled 'Memory Types (left to right)' lists: Memories, Limit Memories, VFO, Home.

The RPS-7800 Programmer is designed to give you the ease and convenience of programming the memories and set menu options of your radio from your PC.

**Memory Channels Include:**

- 800 Memory Channels
- 10 Limit Memories (5 Pairs)
- 5 VFO Channels
- 3 Home Channels

**Other Menu Item Categories Include:**

- DTMF
- 2Tone
- 5Tone

**The Programmer Is for so Much More than Just Memory Management.**

With the RPS-7800 Programmer you can begin a new “factory fresh” file into which frequencies and option settings are entered. Or, you can read from the radio, store these details on your computer and make changes. Then, with minimal button pushing, send the new configuration back to the radio.

The Programmer allows you to create and save as many files as you want for your radio. Files can even be shared between users via email or the Internet.

Managing all the options of this great little radio becomes easy with the Programmer. The cut, copy, paste and insert features of the Programmer make channel management easier than ever.

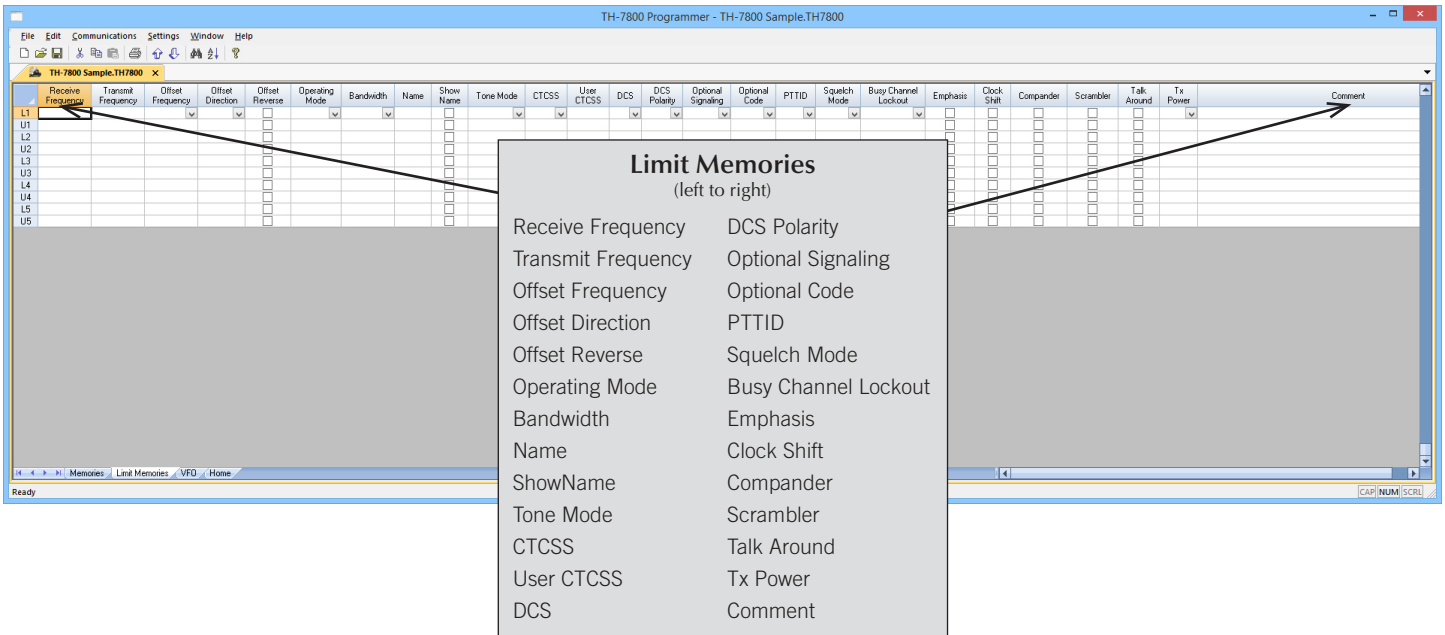
Open more than one file at a time. Memory channel information can be copied from one file to another within the Programmer making it really easy to set up a new file.



**Hardware Requirements:**

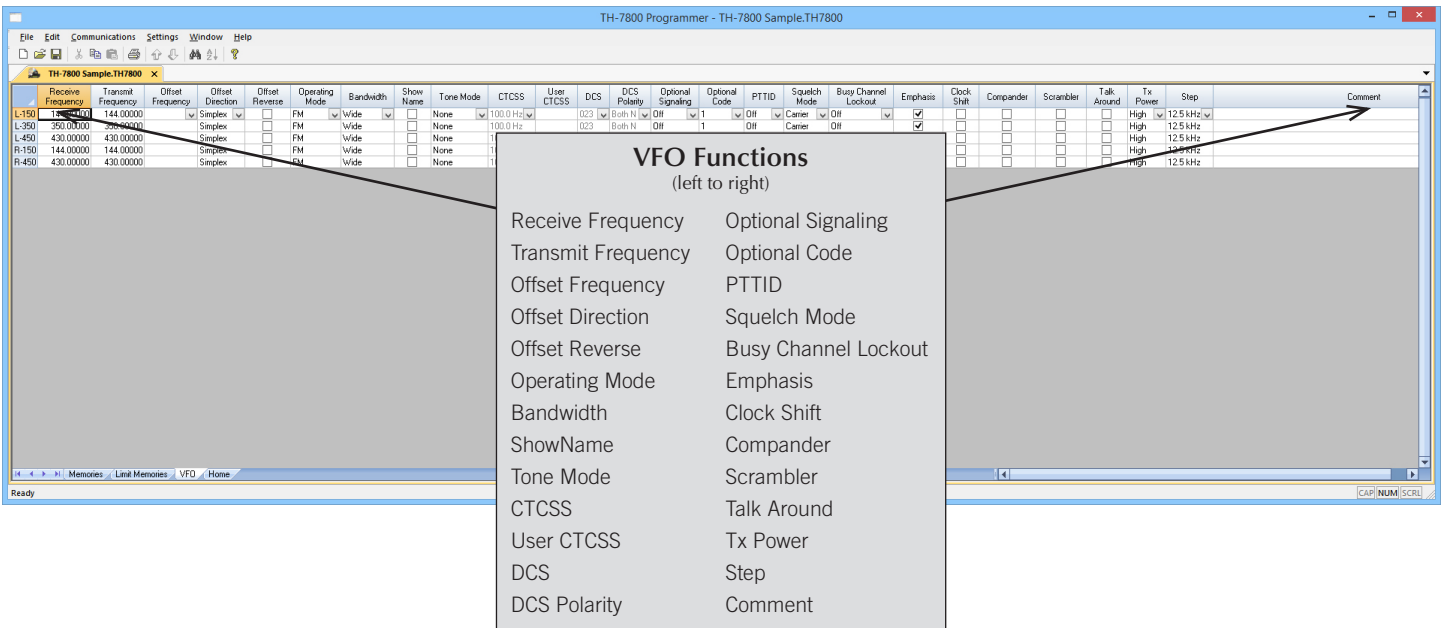
A PC running XP SP3 (32 or 64 bit), Windows 7 (32 or 64 bit), Windows 8 or 8.1 (full version) or Windows 10. Local USB port and RT Systems USB-32 interface cable (6' cable length). The cable connects the radio to the computer from the USB port on the computer to the USB jack on the radio. Internet connection for update at end of software installation.





**Limit Memories**

Limit Memories are used by the radio for Program Scan. Program the same details for Limit Memories as for regular memory channels. Many of the Limit Memories are preprogrammed in the radio and while the frequency can be changed to another within the band, they cannot be left blank.



**VFO**

The program makes available the same VFO's as in the radio (usually one per band). Remember these are not real memory channels since the details are lost as soon as you tune the radio manually. There is no one button recall for these. You do not need to program into VFO before programming details into a memory channel. These channels are preprogrammed in the radio and while the frequency can be changed to another within the band, they cannot be left blank.

The screenshot shows the TH-7800 Programmer software interface. A table lists channel parameters, and a callout box titled 'Home Channels (left to right)' lists the parameters for the first three channels.

Receive Frequency	Transmit Frequency	Offset Frequency	Offset Direction	Offset Reverse	Operating Mode	Bandwidth	Name	Show Name	Tone Mode	CTCSS	User CTCSS	DCS	DCS Polarity	Optional Signaling	Optional Code	PTTID	Squelch Mode	Busy Channel Lockout	Emphasis	Clock Shift	Compander	Scrambler	Talk Around	Tx Power	Comment
150	144.0000	144.00000	Simplex	<input type="checkbox"/>	FM	Wide		<input type="checkbox"/>	None	100.0 Hz	023	Both-N	Off	1	Off	Center	Off	<input checked="" type="checkbox"/>	<input type="checkbox"/>	<input type="checkbox"/>	<input type="checkbox"/>	<input type="checkbox"/>	High		
250	500.0000	250.00000	Simplex	<input type="checkbox"/>	FM	Wide		<input type="checkbox"/>	None	100.0 Hz	023	Both-N	Off	1	Off	Center	Off	<input checked="" type="checkbox"/>	<input type="checkbox"/>	<input type="checkbox"/>	<input type="checkbox"/>	<input type="checkbox"/>	<input type="checkbox"/>	High	
450	430.0000	430.00000	Simplex	<input type="checkbox"/>	FM	Wide		<input type="checkbox"/>	None	100.0 Hz	023	Both-N	Off	1	Off	Center	Off	<input checked="" type="checkbox"/>	<input type="checkbox"/>	<input type="checkbox"/>	<input type="checkbox"/>	<input type="checkbox"/>	<input type="checkbox"/>	High	

**Home Channels**  
(left to right)

Receive Frequency	DCS Polarity
Transmit Frequency	Optional Signaling
Offset Frequency	Optional Code
Offset Direction	PTTID
Offset Reverse	Squelch Mode
Operating Mode	Busy Channel Lockout
Bandwidth	Emphasis
Name	Clock Shift
ShowName	Compander
Tone Mode	Scrambler
CTCSS	Talk Around
User CTCSS	Tx Power
DCS	Comment

**Home**

Home/Call channels are special memories accessed through one button recall on the radio. These channels are preprogrammed in the radio and while the frequency can be changed to another within the band, they cannot be left blank.

Buy Now

Menu Settings for TH-7800 - Untitled.rsf

File Tabs Help

DTMF 2Tone 5Tone

1st Digit: 100 ms  
1st Digit Delay: 450 ms  
Auto Reset Time: 10 seconds  
Decode Response: Remind  
Self ID: 12345009

Delimiter: D  
Group Code: #  
Hold Time: 2 seconds  
Speed: 50 ms  
 Side Tone

	Type	Number	Name
1	ANI	12345009	DTMF01
2			
3			
4			
5			
6			
7			
8			
9			
10			
11			
12			
13			
14			
15			
16			

Use E for \* and F for #

	Type	Up	Down
PTT ID 1	Both	12345	54321
PTT ID 2	Both	12345	54321
PTT ID 3	Down	12345	54321
PTT ID 4	Up	12345	54321

**DTMF**

Enter DTMF memory details and customize options for this function of the radio.

Menu Settings for TH-7800 - Untitled.rsf

File Tabs Help

DTMF 2Tone 5Tone

System

Select: 1 Name: 2T-501  Idle Reply  Side Tone

Tone Duration

1st: 1.0 seconds  
2nd: 3.0 seconds  
Long: 5.0 seconds

Interval: 1.0 seconds

Auto Reset Time: 10 seconds  
Pre-Carrier Time: 0.5 seconds  
Reply Wait: Off

	Format	Response
Decode 1	A-B	Remind
Decode 2	A-C	Remind
Decode 3	A-D	Remind
Decode 4	Long A	Remind

A Tone: 321.7  
B Tone: 928.1  
C Tone: 626.5  
D Tone: 2043.8

Contact

	1st Tone	2nd Tone	Format	System	Name
1	321.7	928.1	Two	1	2T-01
2					
3					
4					
5					
6					
7					
8					

**2Tone**

Set options for a 2Tone functionality specific to your system.

Menu Settings for TH-7800 - Untitled.rsf

File Tabs Help

DTMF 2Tone 5Tone

Decode Standard

ZVEI1	
0 2400.0 Hz	8 2000.0 Hz
1 1060.0 Hz	9 2200.0 Hz
2 1160.0 Hz	A 2600.0 Hz
3 1270.0 Hz	B 810.0 Hz
4 1400.0 Hz	C 970.0 Hz
5 1530.0 Hz	D 885.0 Hz
6 1670.0 Hz	E 2600.0 Hz
7 1830.0 Hz	F 680.0 Hz

Select: ZVEI1

Width: 70 ms

Group: A

Repeat: E

Delimiter: F

Self ID: 12345678  Side Tone

1st Expand: 100 ms

Auto Reset Time: 10 seconds

Decode Response: Remind

End Exit Delay: 100 ms

Reply Delay: 1000 ms

Pre-Carrier Time: 100 ms

Information

Response	ID
1 Remind	13579B
2	
3	
4	

PTTID

Begin ID: 12345

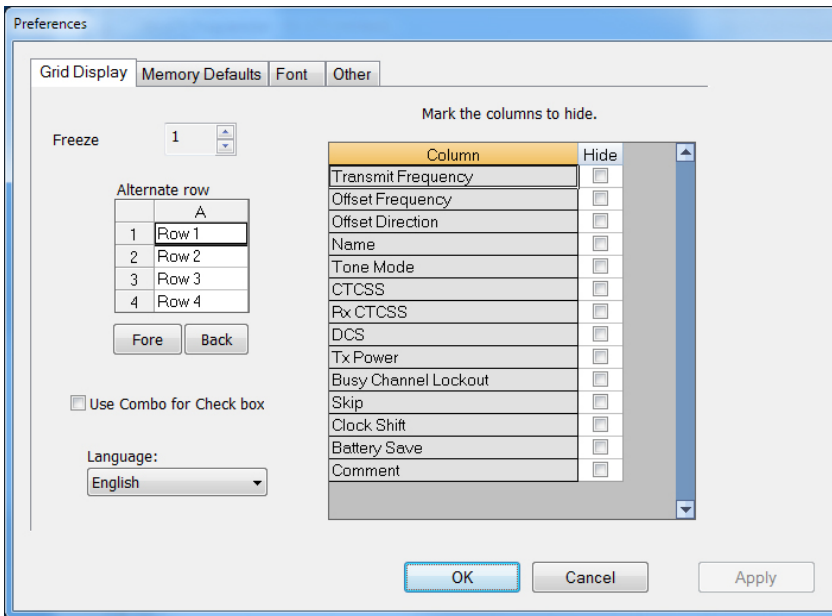
End ID: 54321

Contact

Type	Code	Message	Name
1 ANI	12345678	4#	5T-01
2			
3			
4			
5			
6			
7			
8			

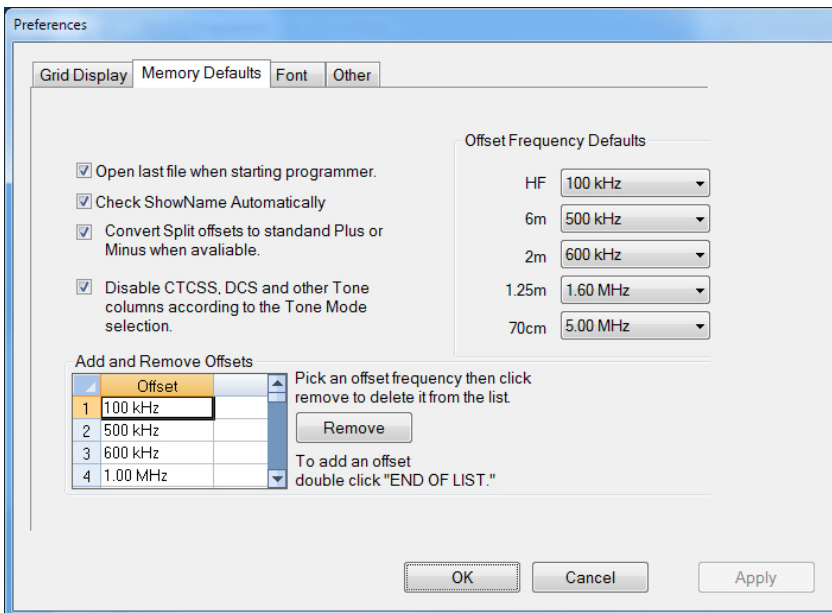
**5Tone**

Set options for a 5Tone paging system.



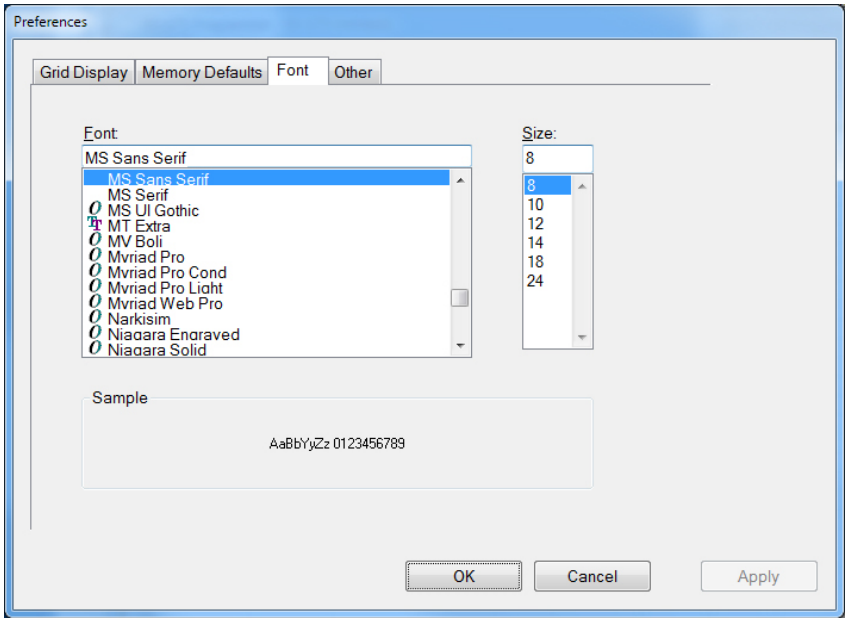
**Grid Display**

- RT Systems now available in English, French, German, Italian, Spanish, Portuguese and Japanese.
- Set colors for text (Fore) or background (Back) of alternate rows for easier viewing across the columns.
- Freeze columns to keep information on the screen as you scroll to the right of the page.
- Hide columns you don't use. Customize your print-out: hidden columns do not print.
- Use Combo for Check boxes – changes the grid to eliminate check box selections that are disabled on some systems.



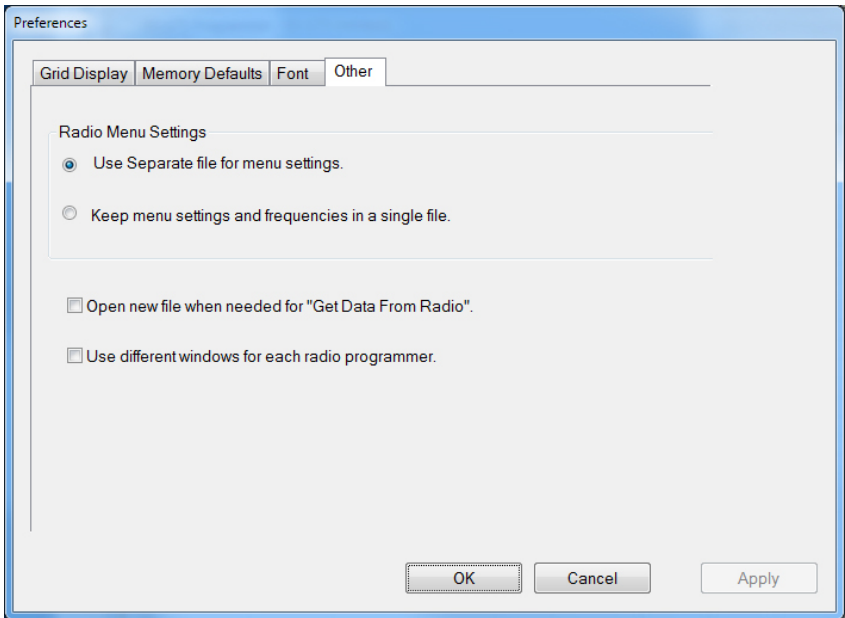
**Memory Defaults**

- Set options to control auto fill information for memory channel entries.



**Font**

- Set options to control the font in the column headers of the channel entry screens. Select any font and font size available on your computer.



**Other**

- Set options to control how the programmer handles the global Radio Menu Settings file.
  - Separate (default) handles the global settings of the radio in a “set and forget” fashion. Once you set these up and save the file you won’t have to reset them for a new frequency file.
  - “Single file” gives you the ability to create files that are complete with frequencies and customized global settings. In this mode, each file begins with factory defaults for every option of the radio.
- Check “Get data from Radio” new file option to prevent data loss when you read from your radio into the programmer.
- Check “different window” option to make the programmer for a different radio run in completely separate window rather than in a separate tab of the same window.

**Buy Now**