

The RPS-9000 Programmer is designed to give you the ease and convenience of programming the memories and set menu options of your radio from your PC.

The Programmer works for the VHF, UHF and 220MHz radios. Each file created will be for a specific band just as the radios operate in one band.

Memory Channels Include:

- 200 Memory Channels
- 2 Limit Channels (1 pair)
- 1 VFO Channel

Other Menu Item Categories Include:

- Common Settings 1
- Common Settings 2
- DTMF
- 2Tone

The Programmer Is for so Much More than Just Memory Management.

With the RPS-9000 Programmer you can begin a new “factory fresh” file into which frequencies and option settings are entered. Or, you can read from the radio, store these details on your computer and make changes. Then, with minimal button pushing, send the new configuration back to the radio.

The Programmer allows you to create and save as many files as you want for your radio. Files can even be shared between users via email or the Internet. Any RT Systems Version 4.50 program can open a file from any other RT Systems Version 4.50 programmer... even from a different radio.

Managing all the options of this great little radio becomes easy with the Programmer. The cut, copy, paste and insert features of the Programmer make channel management easier than ever.

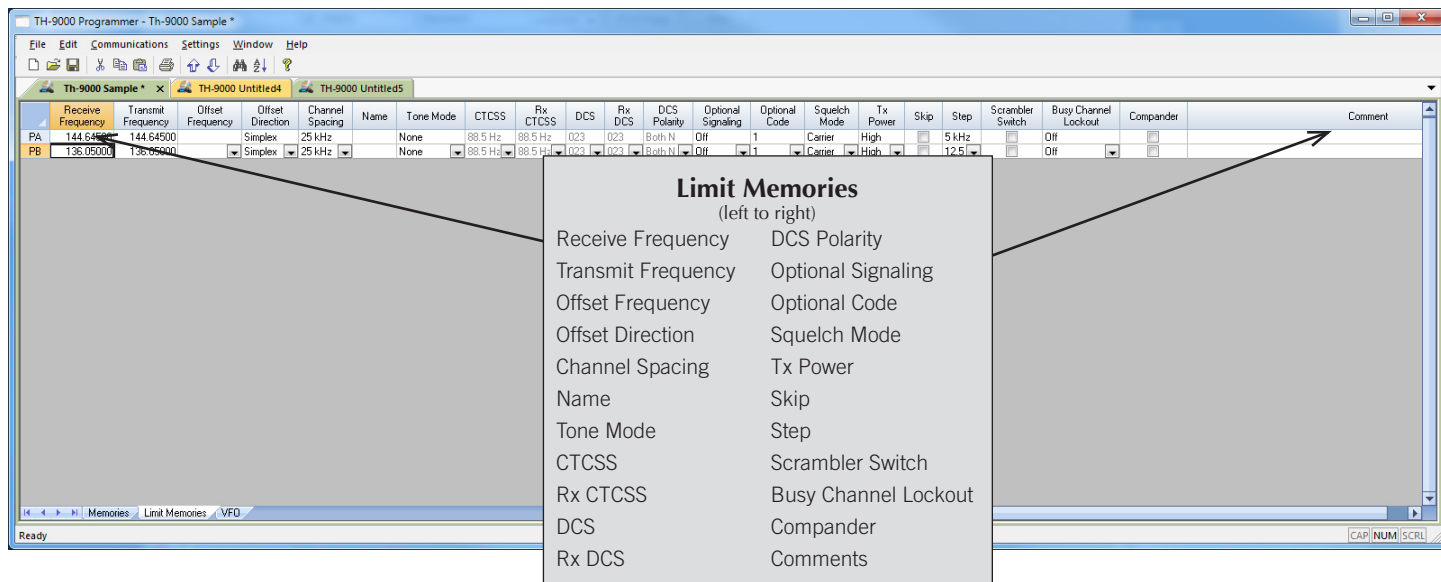
Open more than one file at a time. Memory channel information can be copied from one file to another within the Programmer making it really easy to set up a new file.



Hardware Requirements:

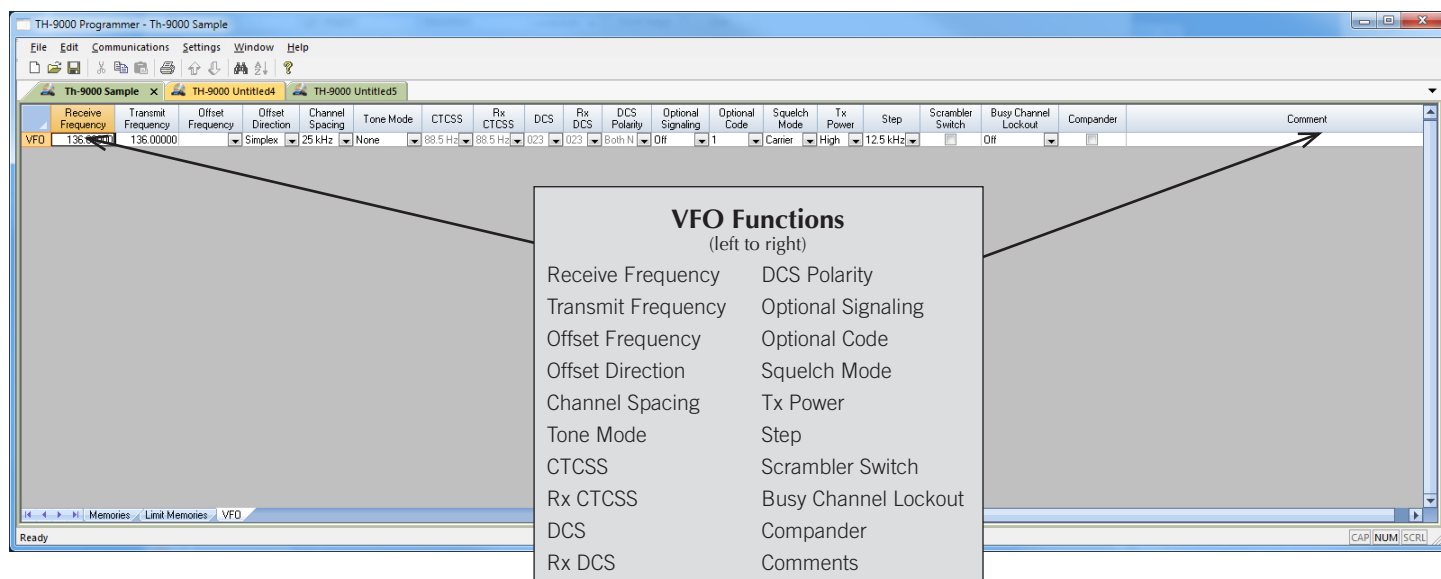
A PC running Windows XP, Vista, Windows 7 (32 or 64 bit) or Windows 8 (full version). A CD drive (local or network) for installation. A free USB port and RT Systems USB-29A interface cable. The cable connects the radio to the computer from the USB port on the computer to the data jack on the front of the radio.





Limit Memories

Limit Memories are used by the radio for Program Scan. Program the same details for Limit Memories as for regular memory channels.



VFO

The program makes available the same VFO's as in the radio (usually one per band). Remember this is not a real memory channel since the details are lost as soon as you tune the radio manually. There is no one button recall for these. You do not need to program into VFO before programming details into a memory channel. This channel will be band specific for your 144 / 440 / 220MHz radio.

RPS-9000 Programming Software Radio Option Setting Screens

Menu Settings for TH-9000 - Untitled.rsf

File Tabs Help

Common 1 Common 2 DTMF 2Tone

Power On Message
[]

Code (Power On Password)
☐ Enable
[]

☒ Beep
☐ Channel Lock
☐ Disable Setup Menu
☐ Eliminate Squelch Tail
☐ Init Inhibit
☐ Lock

Auto Power Off
Off

Backlight Color
Blue

Backlight Brightness
25

Display Mode
Frequency

Display Type
Memory

Memory Channel
0

Scan Resume
Time

Squelch Key Function
Squelch Off

Squelch Level
4

Tail Eliminator
Off

Time Out Timer
3 mins

Tone Burst
1750 Hz

Tx Power
65 Watts

Scan Mode
☒ Enable
☒ Enter Tone

Priority Channel Select
Off

Priority Channel 1
0

Priority Channel 2
0

Revert Channel
Selected

Look Back Time A
1.5 secs

Look Back Time B
2.5 secs

Dropout Delay
3.0 secs

Dwell
3.0 secs

Common 1 and 2

Use these screens to customize other set menu features of the radio. Check boxes toggle features on or off, drop down menus list all selections and blank boxes for personalized entry add to the ease of setting up your radio exactly like you want it.

The entries on the Settings screens are made for you to “Set and Forget”. Once settings are customized, you are prompted to save before exiting. The saved settings will be there every time you create a new frequency file.

The settings are not frequency dependant. One settings file can be used with any frequency file.

Menu Settings for TH-9000 - Untitled.rsf

File Tabs Help

Common 1 Common 2 DTMF 2Tone

Emergency Information

Alarm
Alarm

ENI Type Select
None

ID
[]

Alarm Time
10 secs

Tx Duration
Off

Rx Duration
Off

ENI Send Select
Assigned Channel

Channel
0

Cycle
Continuous

Communication Note

Call ID	Name
0	
1	
2	
3	
4	
5	
6	
7	
8	
9	
10	
11	
12	
13	
14	
15	
16	
17	
18	
19	
20	

P Key Assignments

	Short Press	Long Press	Func+Px
P1	CALL	CLONE	TX POWER
P2	MONI	BATTERY	COMP
P3	V/M	SCAN	COPY CH
P4	MHZ	SHIFT	DEL CH
P5	CT/DT	DTMF	LOCK

Menu Settings for TH-9000 - Untitled.rsf

File Tabs Help

Common 1 Common 2 DTMF 2Tone

1st Digit: 200 ms
Auto Reset: 10.0 secs
Decode Response: None
Encode Delay: 200 ms
Encode Preload: 500 ms
Self ID: 123
PTT ID Start (BOT):
PTT ID End (EOT):

Group Code: A
Interval Character: *
PTT ID Delay: Off
Speed: 50 ms
☐ ANI
☒ Side Tone

	Number
M1	
M2	
M3	
M4	
M5	
M6	
M7	
M8	
M9	
M10	
M11	
M12	
M13	
M14	
M15	
M16	

Use E for * and F for #

DTMF

Enter DTMF memory details and customize options for this function of the radio.

Menu Settings for TH-9000 - Untitled.rsf

File Tabs Help

Common 1 Common 2 DTMF 2Tone

Encode

	1st Tone	2nd Tone	Name
1	321.7	928.1	
2			
3			
4			
5			
6			
7			
8			
9			
10			
11			
12			
13			
14			
15			
16			

Tone Duration

1st: 0.5 secs
2nd: 0.5 secs
Long: 1.0 secs

Gap Time: 1000 secs
Auto Reset: 10.0 secs
☒ Side Tone

Decode

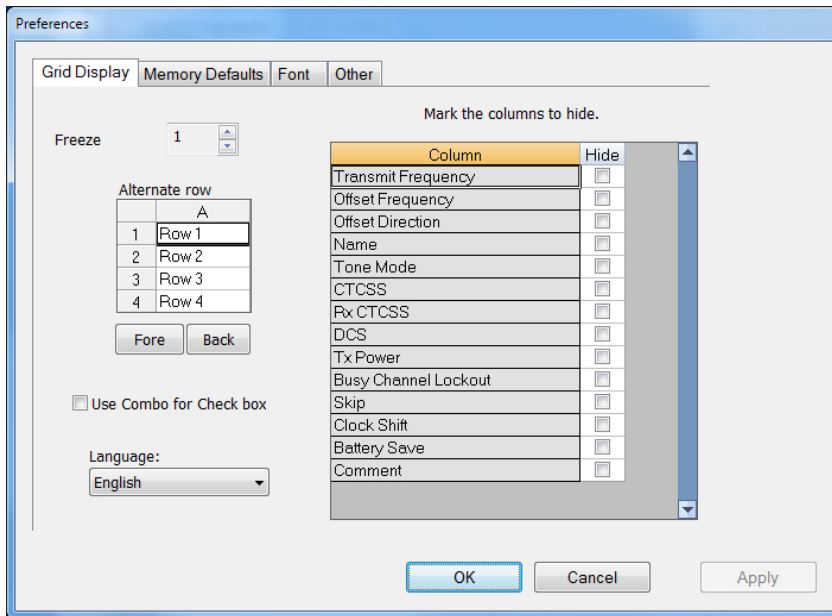
Call Format: A-B
Decoding Response: None

Tone Frequency

A	321.7
B	928.1
C	626.5
D	2043.8

2Tone

Set up options for 2Tone Paging.

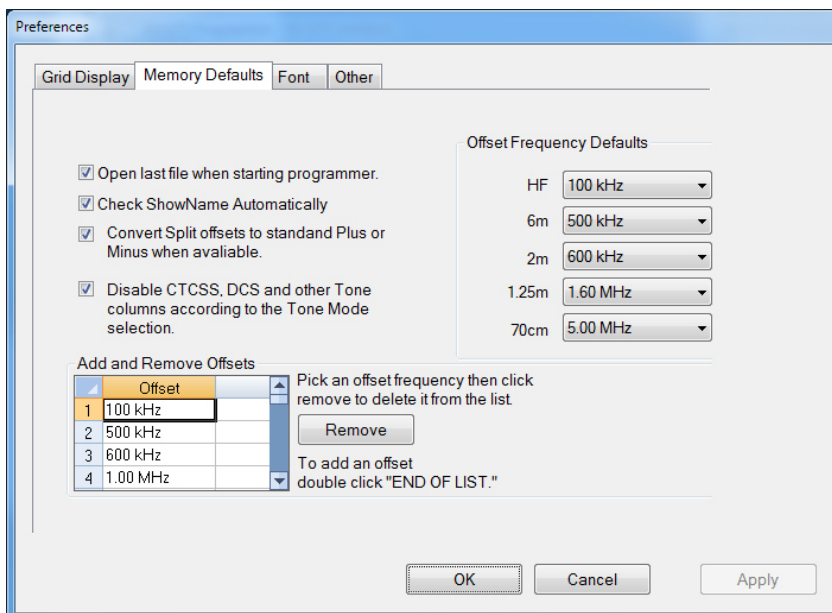


The screenshot shows the 'Grid Display' tab of the Preferences dialog. It includes a 'Freeze' spinner set to 1, an 'Alternate row' table with rows 1-4, 'Fore' and 'Back' buttons, a 'Use Combo for Check box' checkbox, a 'Language' dropdown set to 'English', and a table to 'Mark the columns to hide'.

Column	Hide
Transmit Frequency	<input type="checkbox"/>
Offset Frequency	<input type="checkbox"/>
Offset Direction	<input type="checkbox"/>
Name	<input type="checkbox"/>
Tone Mode	<input type="checkbox"/>
CTCSS	<input type="checkbox"/>
Rx CTCSS	<input type="checkbox"/>
DCS	<input type="checkbox"/>
Tx Power	<input type="checkbox"/>
Busy Channel Lockout	<input type="checkbox"/>
Skip	<input type="checkbox"/>
Clock Shift	<input type="checkbox"/>
Battery Save	<input type="checkbox"/>
Comment	<input type="checkbox"/>

Grid Display

- RT Systems now available in English, French, German, Italian, Spanish, Portuguese and Japanese.
- Set colors for text (Fore) or background (Back) of alternate rows for easier viewing across the columns.
- Freeze columns to keep information on the screen as you scroll to the right of the page.
- Hide columns you don't use. Customize your print-out: hidden columns do not print.
- Use Combo for Check boxes – changes the grid to eliminate check box selections that are disabled on some systems.

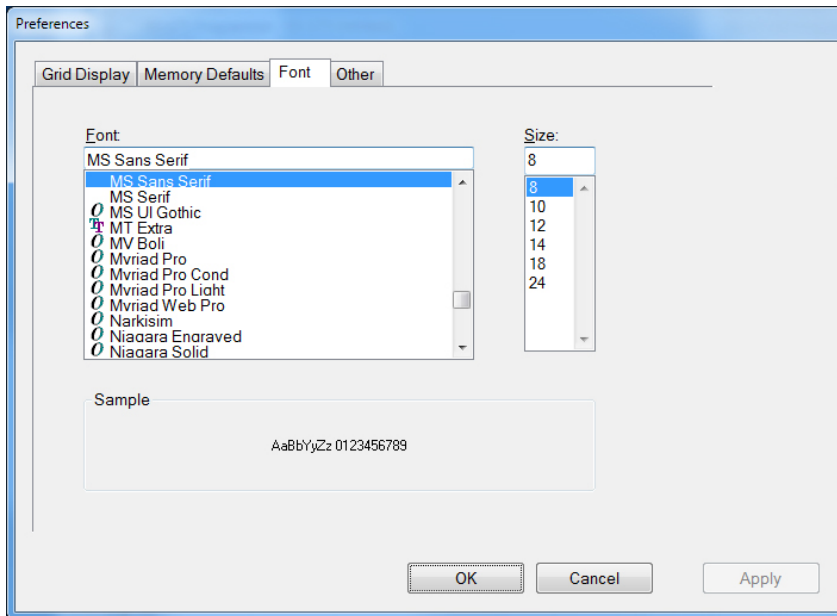


The screenshot shows the 'Memory Defaults' tab of the Preferences dialog. It includes checkboxes for 'Open last file when starting programmer', 'Check ShowName Automatically', 'Convert Split offsets to standard Plus or Minus when available', and 'Disable CTCSS, DCS and other Tone columns according to the Tone Mode selection'. It also features 'Offset Frequency Defaults' dropdowns for HF, 6m, 2m, 1.25m, and 70cm bands, and an 'Add and Remove Offsets' list.

Offset
1 100 kHz
2 500 kHz
3 600 kHz
4 1.00 MHz

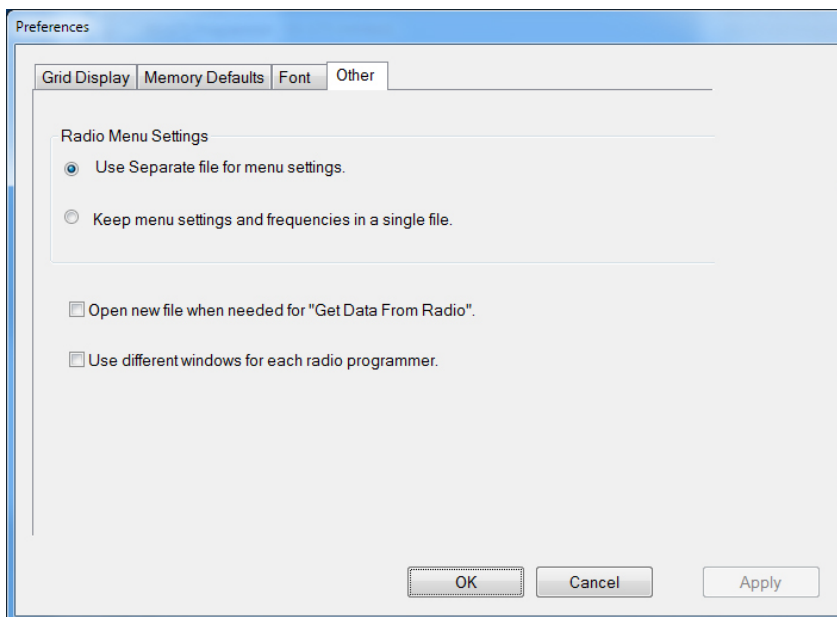
Memory Defaults

- Set options to control auto fill information for memory channel entries.



Font

- Set options to control the font in the column headers of the channel entry screens. Select any font and font size available on your computer.



Other

- Set options to control how the programmer handles the global Radio Menu Settings file.
 - Separate (default) handles the global settings of the radio in a “set and forget” fashion. Once you set these up and save the file you won’t have to reset them for a new frequency file.
 - Together as one gives you the ability to create files that are complete with frequencies and customized global settings. In this mode, each file begins with factory defaults for every option of the radio.
- Check “Get data from Radio” new file option to prevent data loss when you read from your radio into the programmer.
- Check “different window” option to make the programmer for a different radio run in completely separate window rather than in a separate tab of the same window.

Buy Now