

The RPS-KGUV950P Programmer is designed to give you the ease and convenience of programming the memories and set menu options of your radio from your PC.

Memory Channels Include:

- 1,000 Memory Channels
- 7 VFO Channels

Other Menu Item Categories Include:

- Common

The Programmer Is for so Much More than Just Memory Management.

With the RPS-KGUV950P Programmer you can begin a new “factory fresh” file into which frequencies and option settings are entered. Or, you can read from the radio, store these details on your computer and make changes. Then, with minimal button pushing, send the new configuration back to the radio.

The Programmer allows you to create and save as many files as you want for your radio. Files can even be shared between users via email or the Internet.

Managing all the options of this radio becomes easy with the Programmer. The cut, copy, paste and insert features of the Programmer make channel management easier than ever.

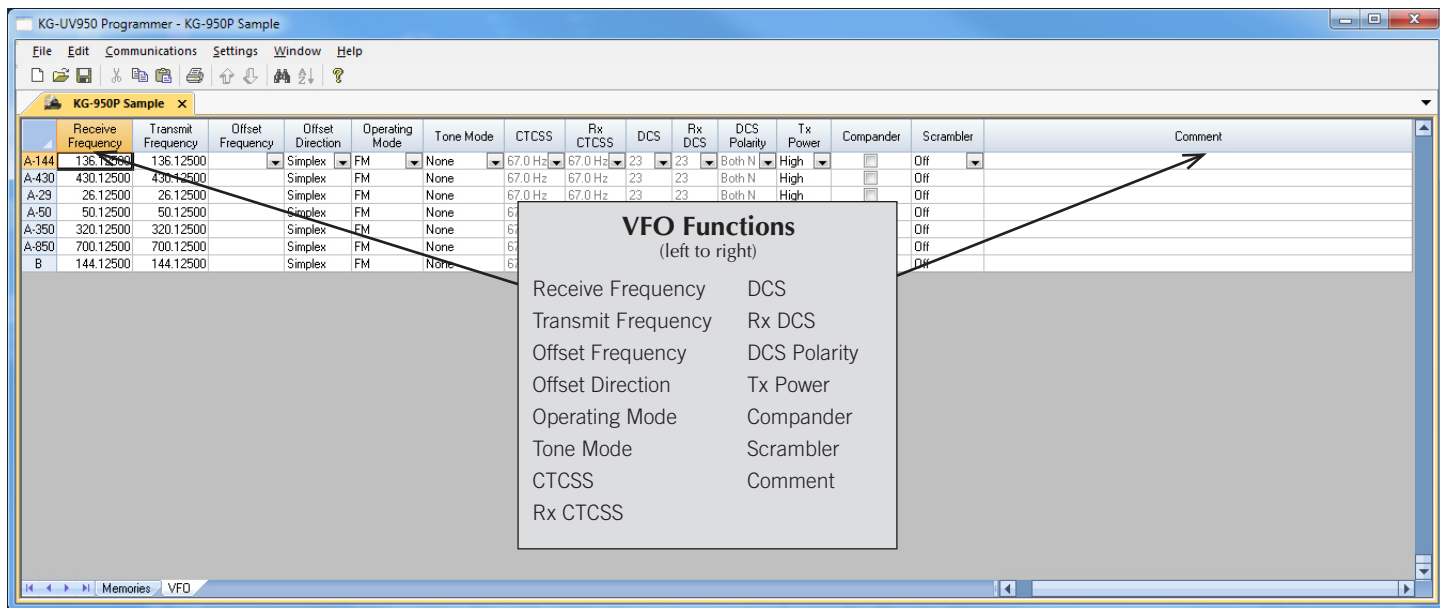
Open more than one file at a time. Memory channel information can be copied from one file to another within the Programmer making it really easy to set up a new file.



Hardware Requirements:

A PC running Windows XP, Vista, Windows 7 (32 or 64 bit) or Windows 8 and 8.1 (desktop version). A CD drive (local or network) for installation. A free USB port and RT Systems USB-W5R interface cable, the cable connects the radio to the computer from the USB port on the computer to the PC jack on the side of the radio.





VFO

The program makes available the same VFO's as in the radio (usually one per band). Remember these are not real memory channels since the details are lost as soon as you tune the radio manually. There is no one button recall for these. You do not need to program into VFO before programming details into a memory channel. These channels are preprogrammed in the radio and while the frequency can be changed to another within the band, they cannot be left blank.

[Buy Now](#)

RPS-KGUV950P Programming Software Radio Option Setting Screen

Menu Settings for KG-UV950 - Untitled.rsf

File Tabs Help

Common

☐ ANI-SW
☒ Auto AM
☐ Auto Lock
☒ Beep
☐ Low Voltage
☒ Menu Enable
☐ Priority Channel
☐ RC Switch
☐ RPT-PTT
☐ RPT-SPK
☒ Scan Det
☒ Tail Eliminate
☐ Undervoltage Tx

Alert
1750 Hz
Auto Power Off
Off
DTMF Interval
80 mseconds
DTMF Time
80 mseconds
DTMF SF
DT-ST
Fan
TX
Mid Power
20 Watts
Model
Radio
PF1 Key
Off

PTT-ID
BOT
PTT-ID Delay
100 msecond
RC Power
RC Stop
Repeater Hold
Off
Ring
3 seconds
Roger
Off
SC-QT
Decoder
Scan Resume
Search
Speakers
SPK1

Threshold Voltage
10.0 Volts
Time Out Timer
2 minutes
TOT Pre-Alert
5 seconds
Voice
Chinese
RX-LED
Green
TX-LED
White
WT-LED
Blue

A Band
☐ Busy Channel Lockout
Current Band
430 MHz
Display Mode
VFO
Squelch Level
5
Step
5 kHz

B Band
☐ Busy Channel Lockout
Display Mode
VFO
Squelch Level
5
Step
5 kHz

FM Channels

	MHz
1	76.0
2	76.0
3	76.0
4	76.0
5	76.0
6	76.0
7	76.0
8	76.0
9	76.0
10	76.0
11	76.0
12	76.0
13	76.0
14	76.0
15	76.0
16	76.0
17	76.0
18	76.0
19	76.0
20	76.0

ANI ID
101
Controller
000000

MCC
000000
SCC
000000

Mode Switch Password 000000

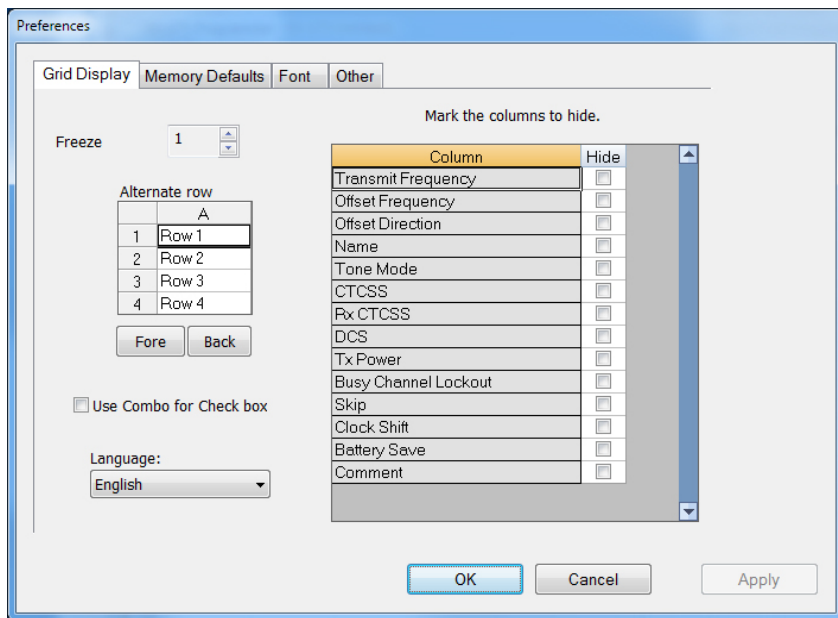
Common

Use this screen to customize other set menu features of the radio. Check boxes toggle features on or off, drop down menus list all selections and blank boxes for personalized entry add to the ease of setting up your radio exactly like you want it.

The entries on the Settings screens are made for you to "Set and Forget". Once settings are customized, you are prompted to save before exiting. The saved settings will be there every time you create a new frequency file.

Scan Groups

Customize scan groups for the 1,000 memory channels of the radio. Use this feature for scanning only a certain group of memory channels associated with a certain area or activity.

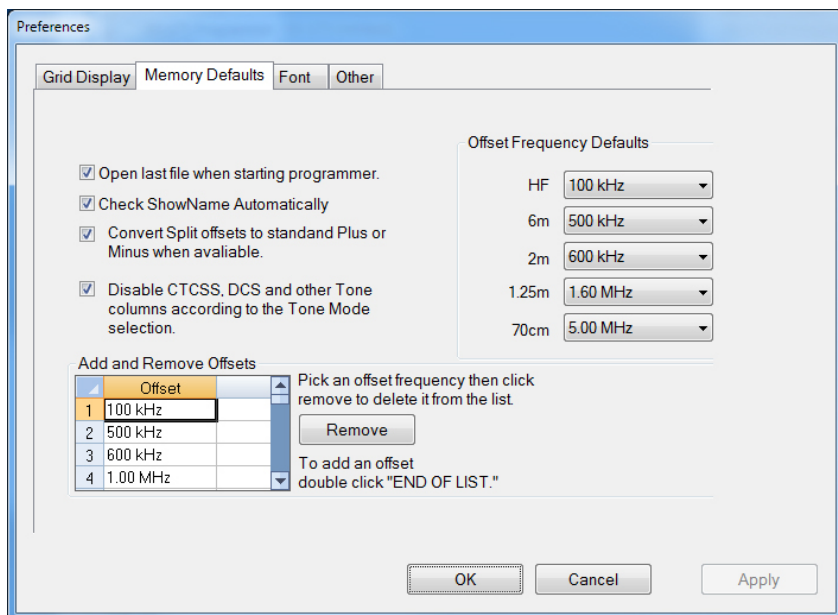


The screenshot shows the 'Grid Display' tab of the Preferences dialog. It includes a 'Freeze' spinner set to 1, an 'Alternate row' table with rows 1-4, 'Fore' and 'Back' buttons, a 'Use Combo for Check box' checkbox, a 'Language' dropdown set to 'English', and a table to 'Mark the columns to hide'.

Column	Hide
Transmit Frequency	<input type="checkbox"/>
Offset Frequency	<input type="checkbox"/>
Offset Direction	<input type="checkbox"/>
Name	<input type="checkbox"/>
Tone Mode	<input type="checkbox"/>
CTCSS	<input type="checkbox"/>
Rx CTCSS	<input type="checkbox"/>
DCS	<input type="checkbox"/>
Tx Power	<input type="checkbox"/>
Busy Channel Lockout	<input type="checkbox"/>
Skip	<input type="checkbox"/>
Clock Shift	<input type="checkbox"/>
Battery Save	<input type="checkbox"/>
Comment	<input type="checkbox"/>

Grid Display

- RT Systems now available in English, French, German, Italian, Spanish, Portuguese and Japanese.
- Set colors for text (Fore) or background (Back) of alternate rows for easier viewing across the columns.
- Freeze columns to keep information on the screen as you scroll to the right of the page.
- Hide columns you don't use. Customize your print-out: hidden columns do not print.
- Use Combo for Check boxes – changes the grid to eliminate check box selections that are disabled on some systems.

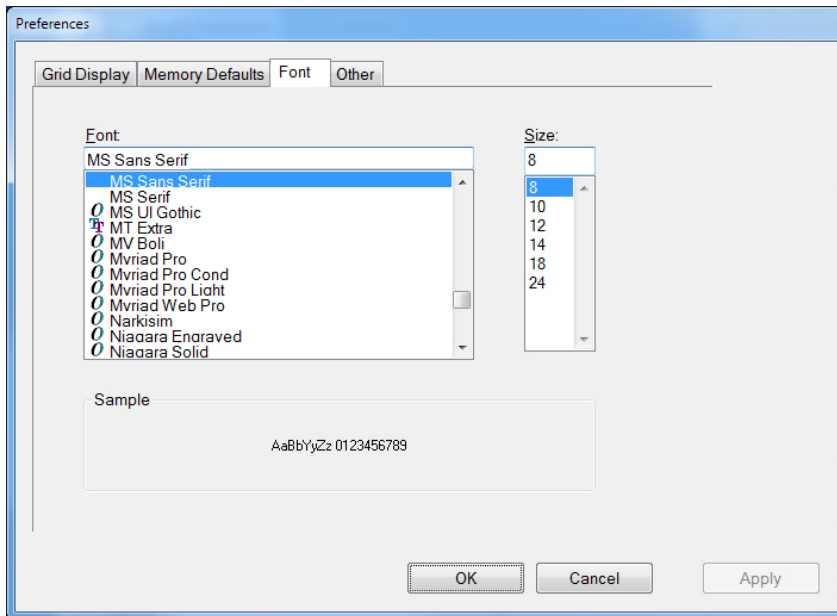


The screenshot shows the 'Memory Defaults' tab of the Preferences dialog. It includes checkboxes for 'Open last file when starting programmer', 'Check ShowName Automatically', 'Convert Split offsets to standard Plus or Minus when available', and 'Disable CTCSS, DCS and other Tone columns according to the Tone Mode selection'. It also features 'Offset Frequency Defaults' dropdowns for HF, 6m, 2m, 1.25m, and 70cm bands, and an 'Add and Remove Offsets' table.

Offset
1 100 kHz
2 500 kHz
3 600 kHz
4 1.00 MHz

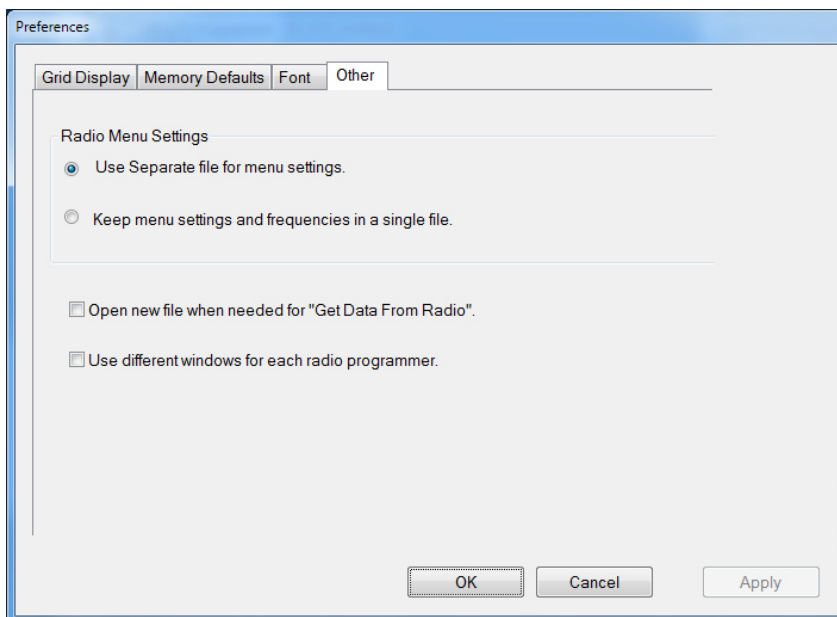
Memory Defaults

- Set options to control auto fill information for memory channel entries.



Font

- Set options to control the font in the column headers of the channel entry screens. Select any font and font size available on your computer.



Other

- Set options to control how the programmer handles the global Radio Menu Settings file.
 - Separate (default) handles the global settings of the radio in a “set and forget” fashion. Once you set these up and save the file you won’t have to reset them for a new frequency file.
 - “Single file” gives you the ability to create files that are complete with frequencies and customized global settings. In this mode, each file begins with factory defaults for every option of the radio.
- Check “Get data from Radio” new file option to prevent data loss when you read from your radio into the programmer.
- Check “different window” option to make the programmer for a different radio run in completely separate window rather than in a separate tab of the same window.

Buy Now