

The SPS-599 Programmer is designed to give you the ease and convenience of programming the memories and set menu options of your radio from your PC.

**Memory Channels Include:**

- 240 Memory Channels
- 2 VFO Channels

**Other Menu Item Categories Include:**

- Common 1
- Common 2
- DTMF
- 2Tone
- 5Tone

***The Programmer Is for so Much More than Just Memory Management.***

With the SPS-599 Programmer you can begin a new “factory fresh” file into which frequencies and option settings are entered. Or, you can read from the radio, store these details on your computer and make changes. Then, with minimal button pushing, send the new configuration back to the radio.

The Programmer allows you to create and save as many files as you want for your radio. Files can even be shared between users via email or the Internet.

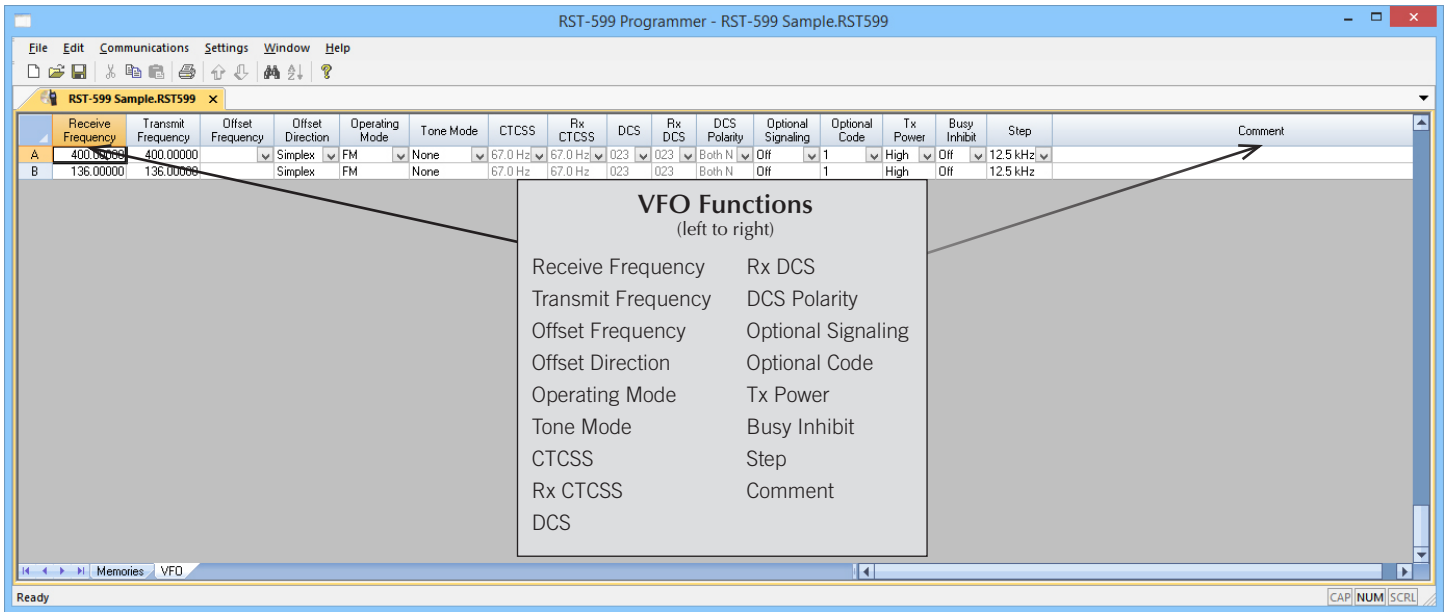
Managing all the options of this great little radio becomes easy with the Programmer. The cut, copy, paste and insert features of the Programmer make channel management easier than ever.

Open more than one file at a time. Memory channel information can be copied from one file to another within the Programmer making it really easy to set up a new file.



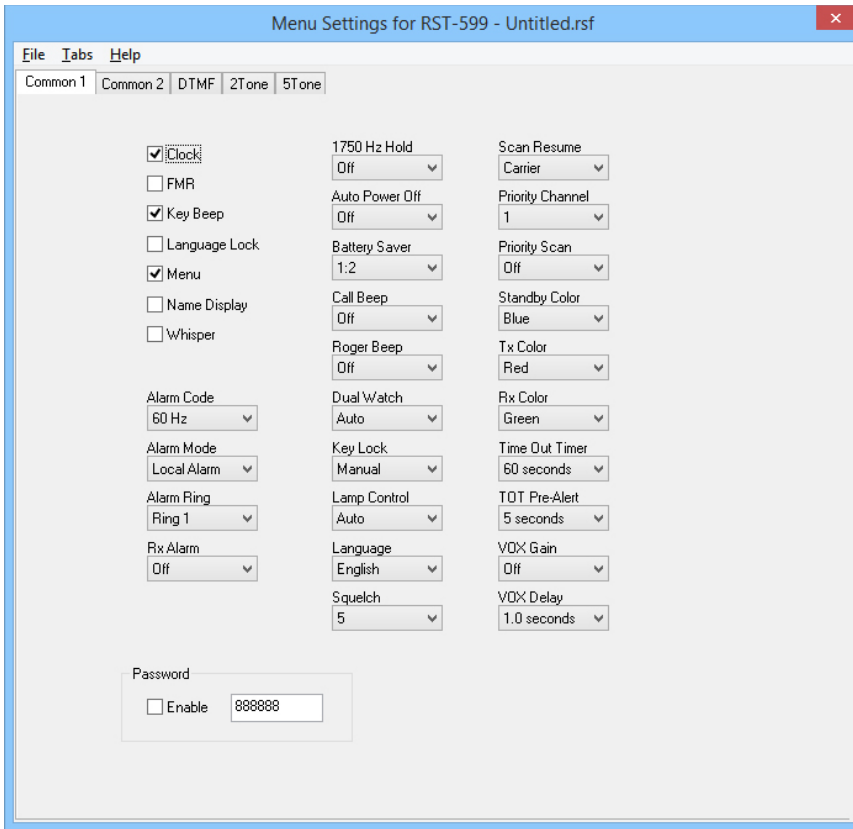
**Hardware Requirements:**

A PC running A PC running XP SP3 (32 or 64 bit), Windows 7 (32 or 64 bit), Windows 8 or 8.1 (full version) or Windows 10. Local USB port and RT Systems USB-K4Y interface cable (6' cable length). The cable connects the radio to the computer from the USB port on the computer to the Speaker/Mic jack on the radio. Internet connection for update at end of software installation.



### VFO

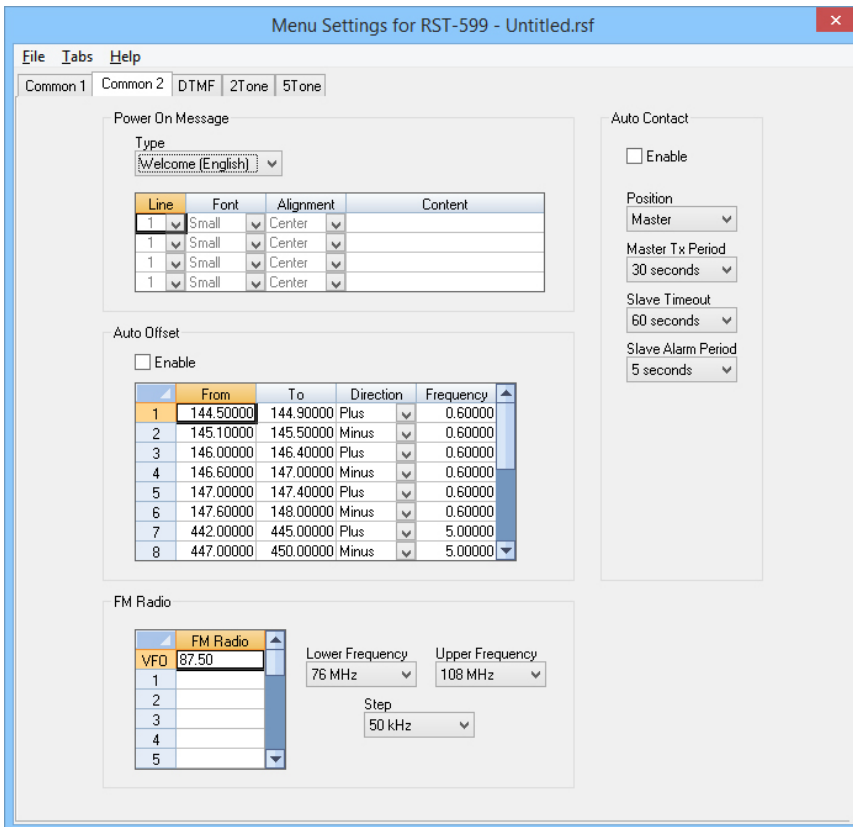
The program makes available the same VFO's as in the radio (usually one per band). Remember these are not real memory channels since the details are lost as soon as you tune the radio manually. There is no one button recall for these. You do not need to program into VFO before programming details into a memory channel. These channels are preprogrammed in the radio and while the frequency can be changed to another within the band, they cannot be left blank.



**Common 1 and Common 2**

Use these screens to customize other set menu features of the radio. Check boxes toggle features on or off, drop down menus list all selections and blank boxes for personalized entry add to the ease of setting up your radio exactly like you want it.

The entries on the Settings screens are made for you to “Set and Forget”. Once settings are customized, you are prompted to save before exiting. The saved settings will be there every time you create a new frequency file.



Menu Settings for RST-599 - Untitled.rsf

File Tabs Help

Common 1 Common 2 **DTMF** 2Tone 5Tone

Encode Mode: Manual  
 Digit Duration: 100 ms  
 Auto Reset Time: Off  
 Pause Duration: 100 ms  
 Clean Code Period: 5 seconds  
 First Delay: 100 ms  
 Group Code: Off  
 Pretime: 500 ms  
 \* # Delay: 50 ms  
 Side Tone  
 Send ID  
 Sub Audio  
 ID:

Address Book

Number	Name
1	
2	
3	
4	
5	
6	
7	
8	
9	
10	
11	
12	
13	
14	
15	

Use E for \* and F for #

**DTMF**

Enter DTMF memory details and customize options for this function of the radio.

Menu Settings for RST-599 - Untitled.rsf

File Tabs Help

Common 1 Common 2 DTMF **2Tone** 5Tone

	0	1	2	3	4	5	6	7	8	9
Motorola-1	330.5	349.0	368.5	389.0	410.8	433.7	457.9	483.5	510.5	539.0
Motorola-2	569.1	600.9	634.5	669.9	707.3	746.8	788.5	832.5	879.0	928.1
Motorola-3	1092.4	288.5	296.5	304.7	313.0	953.7	979.9	1006.9	1034.7	1063.2
Motorola-4	321.7	339.6	358.6	378.6	399.8	422.1	445.7	470.5	496.8	524.6
Motorola-5	553.9	584.8	617.4	651.9	688.3	726.8	767.4	810.2	855.5	903.2
Motorola-6	1122.5	1153.4	1185.2	1217.8	1251.4	1285.8	1321.2	1357.6	1395.0	1433.4
Motorola-10	1472.9	1513.5	1555.2	1598.0	1642.0	1687.2	1733.7	1781.5	1830.5	1881.0
Motorola-11	1930.2	1989.0	2043.8	2094.5	2155.6	2212.2	2271.7	2334.6	2401.0	2468.2
GE/99-A	682.5	592.5	757.5	802.5	847.5	892.5	937.5	547.5	727.5	637.5
GE/99-B	652.5	607.5	787.5	832.5	877.5	922.5	967.5	517.5	562.5	697.5
GE/99-C	667.5	712.5	772.5	817.5	862.5	907.5	952.5	532.5	577.5	622.5
REACH-A	1980.0	2704.0	2612.0	2523.0	2437.0	2354.0	2274.0	2196.0	2121.0	2049.0
REACH-B	1400.0	1912.0	1847.0	1784.0	1723.0	1664.0	1606.0	1553.0	1500.0	1449.0
REACH-C	1177.0	1608.0	1553.0	1500.0	1449.0	1400.0	1352.0	1306.0	1261.0	1219.0
REACH-D	832.0	1137.0	1093.0	1061.0	1025.0	990.0	956.0	923.0	892.0	862.0
REACH-E	588.0	804.0	776.0	750.0	725.0	700.0	676.0	653.0	631.0	609.0

Lead In: 500 ms    Lead Out: 100 ms

Encode

	Tone A	Tone B
1	Off	Off
2	Off	Off
3	Off	Off
4	Off	Off
5	Off	Off
6	Off	Off
7	Off	Off
8	Off	Off

Decode

	Tone A	Tone B
1	Off	Off
2	Off	Off
3	Off	Off
4	Off	Off
5	Off	Off
6	Off	Off
7	Off	Off
8	Off	Off

System

Name	Type
1	Motorola-1
Call	Off
Tone A Time	0.4
Tone B Time	0.4
Group Time	3.0
Auto Reset Time	30
Auto Reset	<input checked="" type="checkbox"/>
Sub Audio	<input checked="" type="checkbox"/>
Decode 1	<input type="checkbox"/>
Decode 2	<input type="checkbox"/>
Decode 3	<input type="checkbox"/>
Decode 4	<input type="checkbox"/>
Decode 5	<input type="checkbox"/>
Decode 6	<input type="checkbox"/>
Decode 7	<input type="checkbox"/>
Decode 8	<input type="checkbox"/>
Decode 9	<input type="checkbox"/>
Decode 10	<input type="checkbox"/>
Decode 11	<input type="checkbox"/>
Decode 12	<input type="checkbox"/>
Decode 13	<input type="checkbox"/>
Decode 14	<input type="checkbox"/>
Decode 15	<input type="checkbox"/>
Decode 16	<input type="checkbox"/>

Selected: 1

**2Tone**

Set options for a 2Tone functionality specific to your system.

Menu Settings for RST-599 - Untitled.rsf

File Tabs Help

Common 1 Common 2 DTMF 2Tone 5Tone

	0	1	2	3	4	5	6	7	8	9	A	B	C	D	E	F	Tone Time	Gap Time
ZVZ11	2400	1060	1160	1270	1400	1530	1670	1830	2000	2200	2800	810	970	885	2600	680	70	105
ZvZ12	2400	1060	1160	1270	1400	1530	1670	1830	2000	2200	885	810	740	680	970	2600	70	105
PZVE1	2400	1060	1160	1270	1400	1530	1670	1830	2000	2200	970	810	2800	885	2600	680	70	105
DZVE1	2200	970	1060	1160	1270	1400	1530	1670	1830	2000	825	740	2600	885	2400	680	70	105
CCIR1	1981	1124	1197	1275	1358	1446	1540	1640	1747	1860	2400	930	2247	991	2110	1055	70	105
CCIR2	1981	1124	1197	1275	1358	1446	1540	1640	1747	1860	2400	930	2247	991	2110	1055	100	150
EEA	1981	1124	1197	1275	1358	1446	1540	1640	1747	1860	1055	930	2400	991	2110	2247	40	60
EIA	600	741	882	1023	1164	1305	1446	1587	1728	1869	2151	2433	2010	2292	459	1091	33	45

Auto Reset Time: 30 seconds

Group Tone: A

Repeat Tone: E

1st Extend Time: 100 ms

2nd Extend Time: 100 ms

1st Tone Extend

2nd Tone Extend

Lead In: ms 500

Lead Out: 100

System

Name	Type	Call	ID	Sequence	Auto Reset	Sub Audio	Decode 1
1	ZVZ11	Off	Off	Call	<input checked="" type="checkbox"/>	<input checked="" type="checkbox"/>	<input type="checkbox"/>

Selected: 1

Encode

Code
1
2
3
4
5
6
7
8

Decode

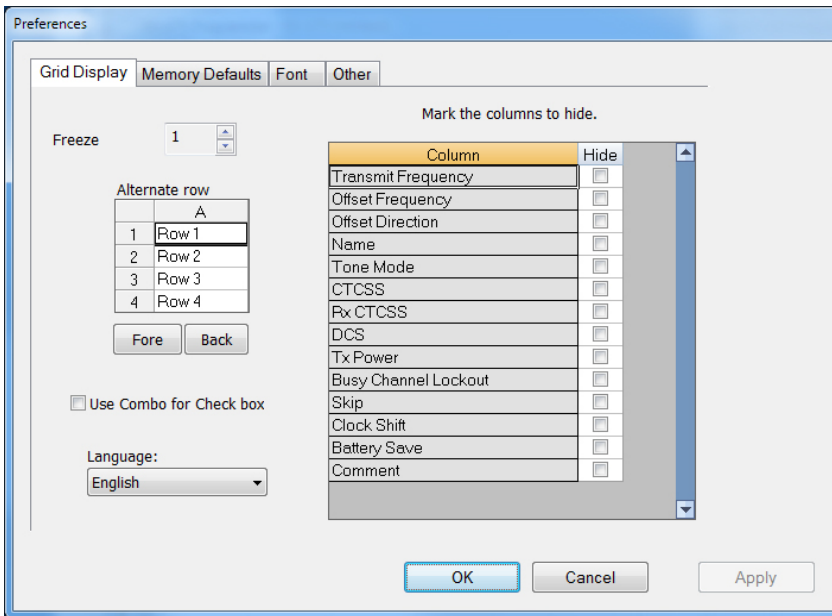
Code	Type
1	General
2	General
3	General
4	General
5	General
6	General
7	General
8	General

**5Tone**

Set options for a 5Tone paging system.

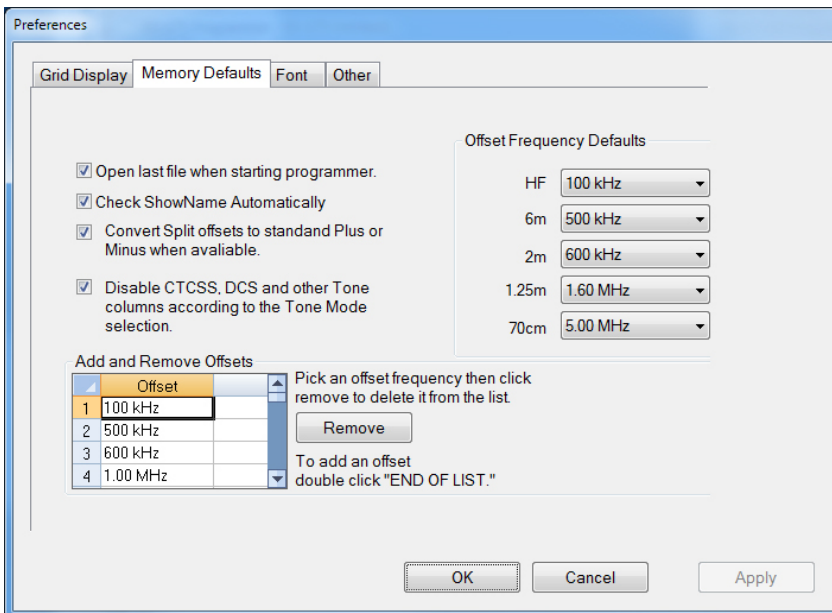
Want to Know Even More?

For additional details and tips, click here for the comprehensive SPS-599 Programmer Help File.



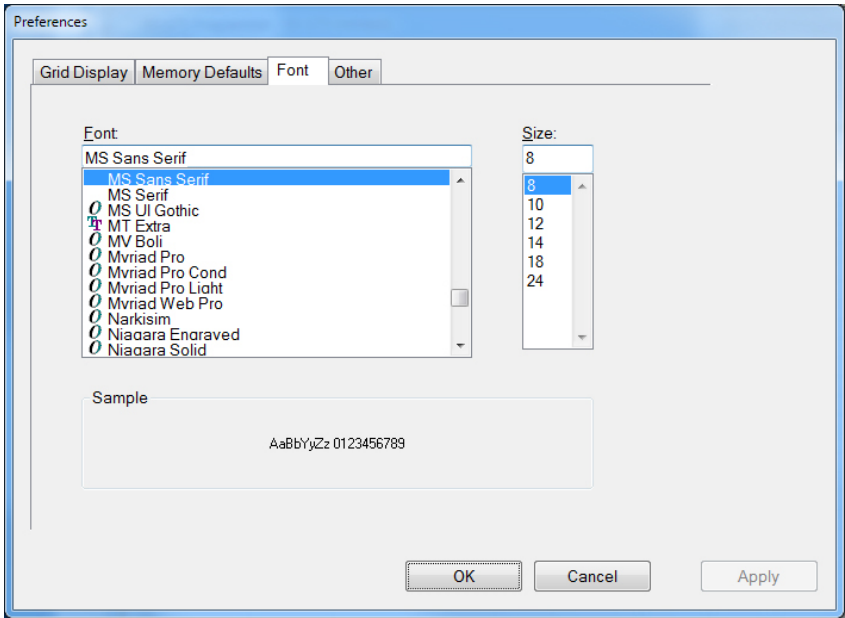
**Grid Display**

- RT Systems now available in English, French, German, Italian, Spanish, Portuguese and Japanese.
- Set colors for text (Fore) or background (Back) of alternate rows for easier viewing across the columns.
- Freeze columns to keep information on the screen as you scroll to the right of the page.
- Hide columns you don't use. Customize your print-out: hidden columns do not print.
- Use Combo for Check boxes – changes the grid to eliminate check box selections that are disabled on some systems.



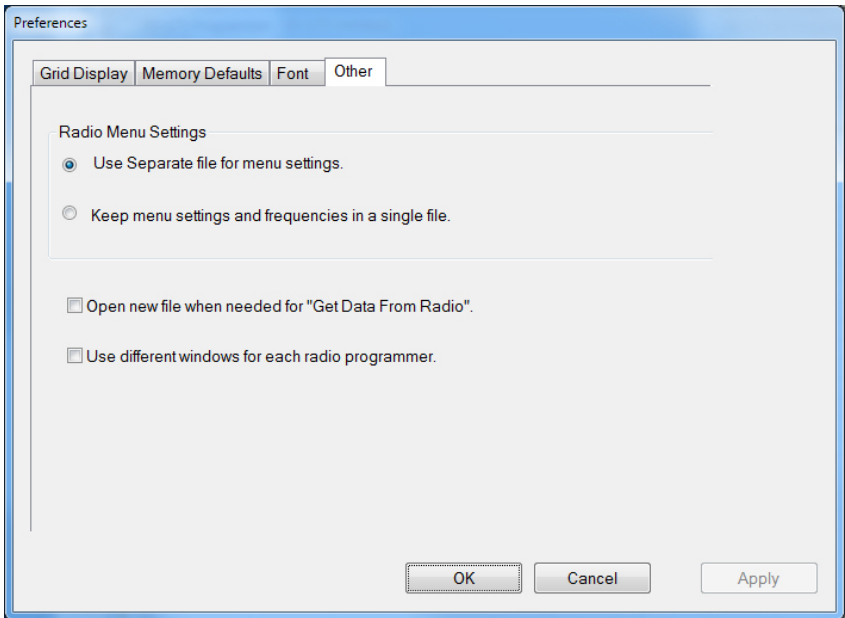
**Memory Defaults**

- Set options to control auto fill information for memory channel entries.



### Font

- Set options to control the font in the column headers of the channel entry screens. Select any font and font size available on your computer.



### Other

- Set options to control how the programmer handles the global Radio Menu Settings file.
  - Separate (default) handles the global settings of the radio in a “set and forget” fashion. Once you set these up and save the file you won’t have to reset them for a new frequency file.
  - “Single file” gives you the ability to create files that are complete with frequencies and customized global settings. In this mode, each file begins with factory defaults for every option of the radio.
- Check “Get data from Radio” new file option to prevent data loss when you read from your radio into the programmer.
- Check “different window” option to make the programmer for a different radio run in completely separate window rather than in a separate tab of the same window.

[Buy Now](#)