

The TS-2000 Programmer is designed to give you the ease and convenience of programming the memories and set menu options of your radio from your PC.

Memory Channels* Include:

- 289 Memory Channels
- 10 Limit Memories (five pair)

Other Menu Item Categories for Menu A and B Include:

- Main Settings
- DTMF
- Programmable Memory Options

* The TS-2000 Programmer also gives you simple and easy control of your radio when using it as a base station. Enter details in a memory channel then press **CTRL / Left Mouse Click** to tune immediately to that frequency with Name, Mode and Tones Set just like in the program.

The Programmer Is for so Much More than Just Memory Management.

With the TS-2000 Programmer you can begin a new “factory fresh” file into which frequencies and option settings are entered. Or, you can read from the radio, store these details on your computer and make changes. Then, with minimal button pushing, send the new configuration back to the radio.

The Programmer allows you to create and save as many files as you want for your radio. Files can even be shared between users via email or the Internet. Any RT Systems Version 4 program can open a file from any other RT Systems Version 4 programmer... even from a different radio.

Managing all the options of this great little radio becomes easy with the Programmer. The cut, copy, paste and insert features of the Programmer make channel management easier than ever.

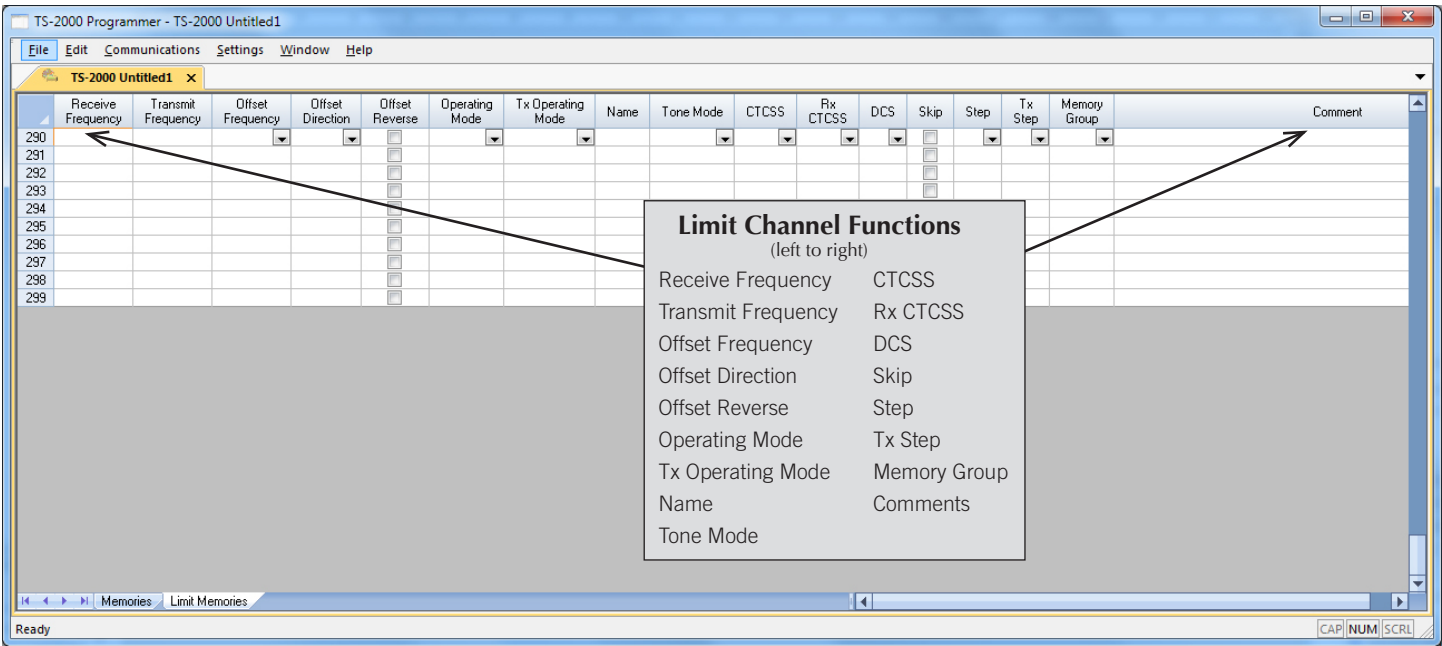
Open more than one file at a time. Memory channel information can be copied from one file to another within the Programmer making it really easy to set up a new file.



Hardware Requirements:

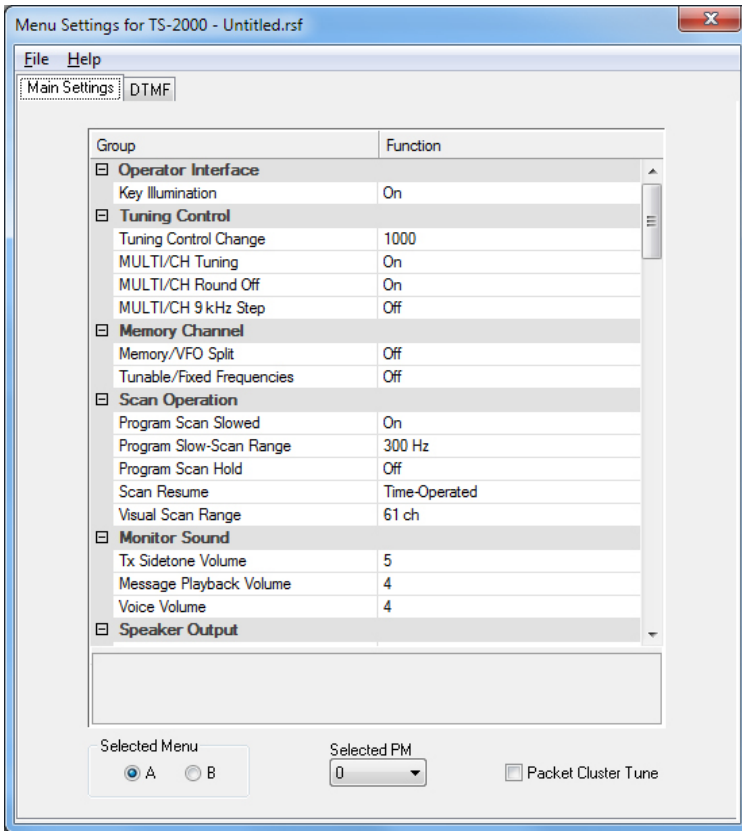
A PC running Windows XP, Vista, Windows 7 (32 or 64 bit) or Windows 8 (desktop version). A CD drive (local or network) for installation. A free USB port. The RT Systems USB-63 interface cable. The cable connects the radio to the computer from the USB port on the computer to the DB-9 jack on the radio.





Limit Memories

Limit Memories are used by the radio for Program Scan. Program the same details for Limit Memories as for regular memory channels.

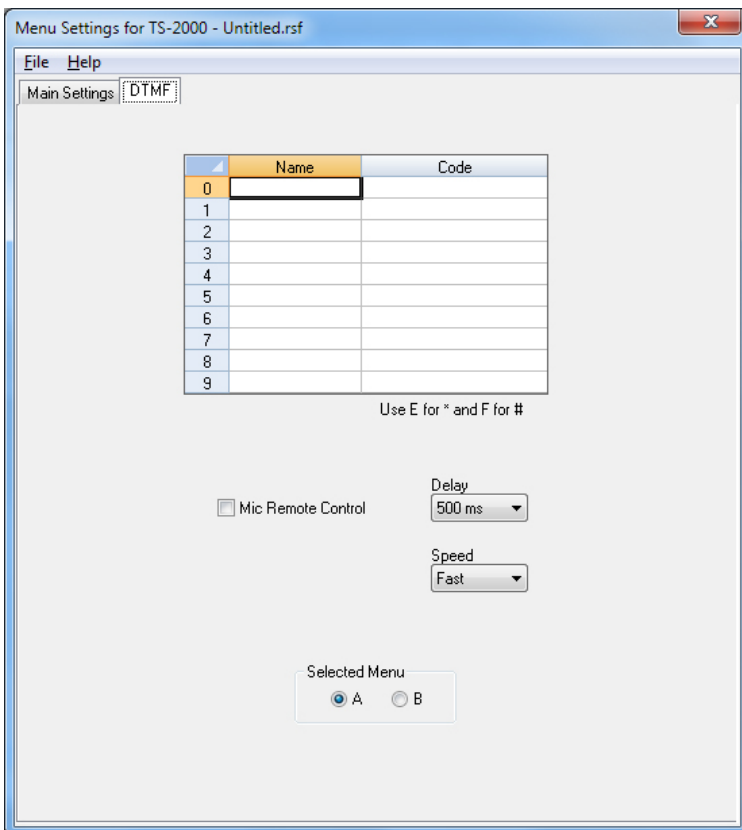


Main Settings

Use these screens to customize other set menu features of the radio. Check boxes toggle features on or off, drop down menus list all selections and blank boxes for personalized entry add to the ease of setting up your radio exactly like you want it.

Customize Menu A and B from this screen by selecting A or B under Selected Menu at the bottom of the screen. Select the Programmable memory to be used with the “Selected PM” option.

The entries on the Settings screens are made for you to “Set and Forget”. Once settings are customized, you are prompted to save before exiting. The saved settings will be there every time you create a new frequency file.



DTMF

Enter DTMF tones and names as well as customizing other DTMF options on this screen.