

The WCS-2200 Programmer is designed to give you the ease and convenience of programming the memories and set menu options of your radio from your PC.

Memory Channels Include:

- 200 Memories with D-Star options*
- 6 Limit Memories (3 pair)
- 3 VFO Channels
- 1 Call Channel

Other Menu Item Categories Include:

- Common
- F1 Common
- F2 Common
- DTMF

The Programmer Is for so Much More than Just Memory Management.

* Icom UT-118 required in radio for D-Star

With the WCS-2200 Programmer you can begin a new “factory fresh” file into which frequencies and option settings are entered. Or, you can read from the radio, store these details on your computer and make changes. Then, with minimal button pushing, send the new configuration back to the radio.

The Programmer allows you to create and save as many files as you want for your radio. Files can even be shared between users via email or the Internet. Any RT Systems Version 4.50 program can open a file from any other RT Systems Version 4.50 programmer... even from a different radio.

Managing all the options of this great little radio becomes easy with the Programmer. The cut, copy, paste and insert features of the Programmer make channel management easier than ever.

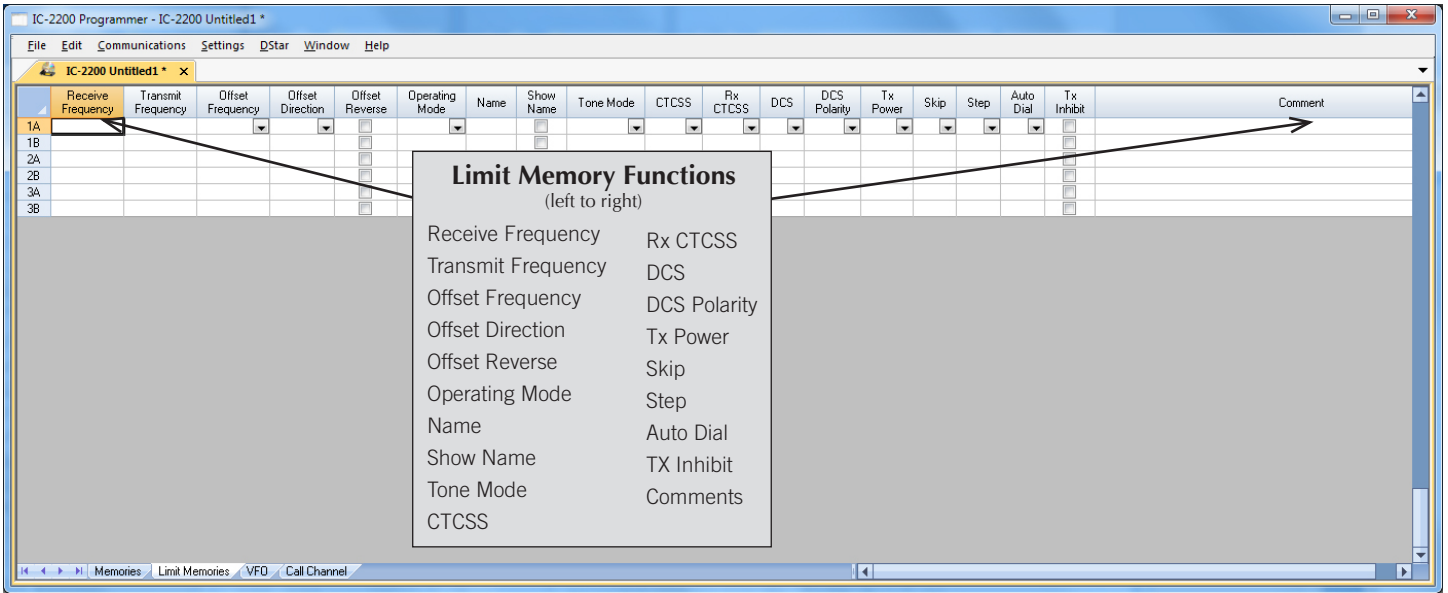
Open more than one file at a time. Memory channel information can be copied from one file to another within the Programmer making it really easy to set up a new file.



Hardware Requirements:

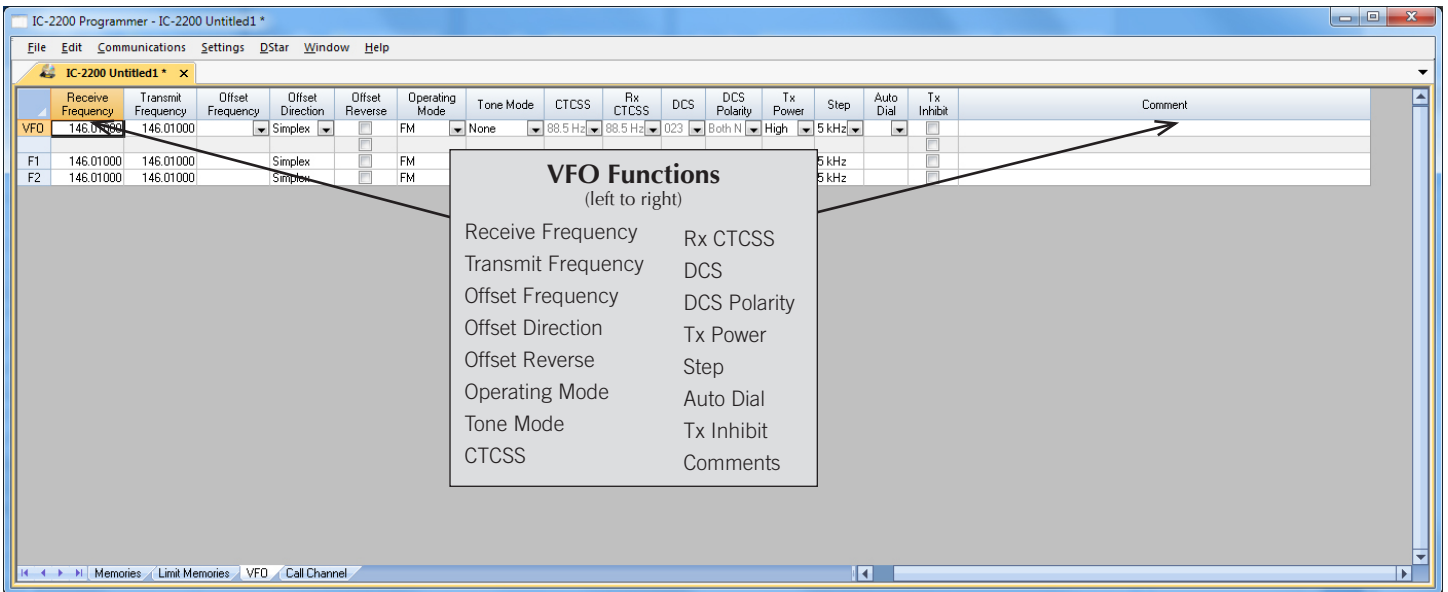
A PC running Windows XP, Vista, Windows 7 (32 or 64 bit) or Windows 8 (desktop version). A CD drive (local or network) for installation. A free USB port. The RT Systems USB-29A interface cable. The cable connects the radio to the computer from the USB port on the computer to the speaker jack on the radio.





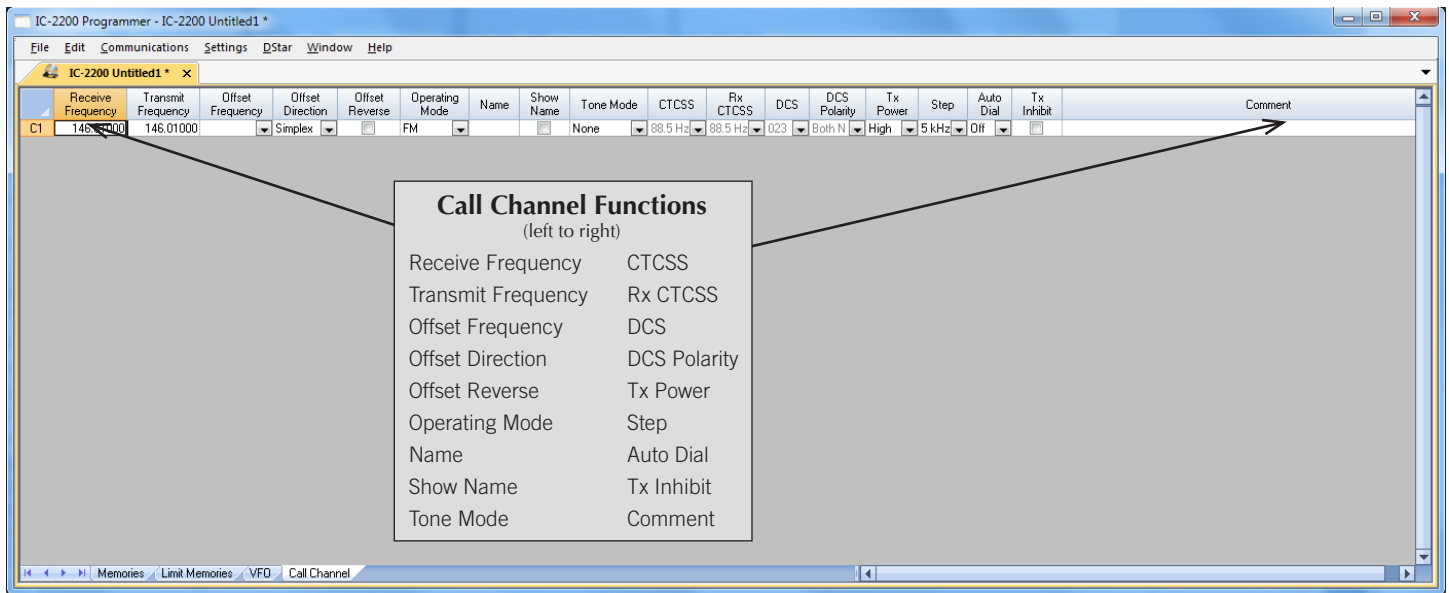
Limit Memories

Limit Memories are used by the radio for Program Scan. Program the same details for Limit Memories as for regular memory channels. Many of the Limit Memories are preprogrammed in the radio and while the frequency can be changed to another within the band, they cannot be left blank.



VFO

The program makes available the same VFO's as in the radio (usually one per band). Remember these are not real memory channels since the details are lost as soon as you tune the radio manually. There is no one button recall for these. You do not need to program into VFO before programming details into a memory channel. These channels are preprogrammed in the radio and while the frequency can be changed to another within the band, they cannot be left blank.

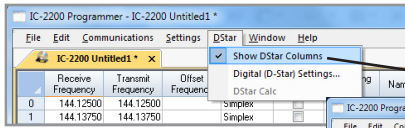


Call Channel

Home/Call channels are special memories accessed through one button recall on the radio. This channel is preprogrammed in the radio and while the frequency can be changed to another within the band, it cannot be left blank.

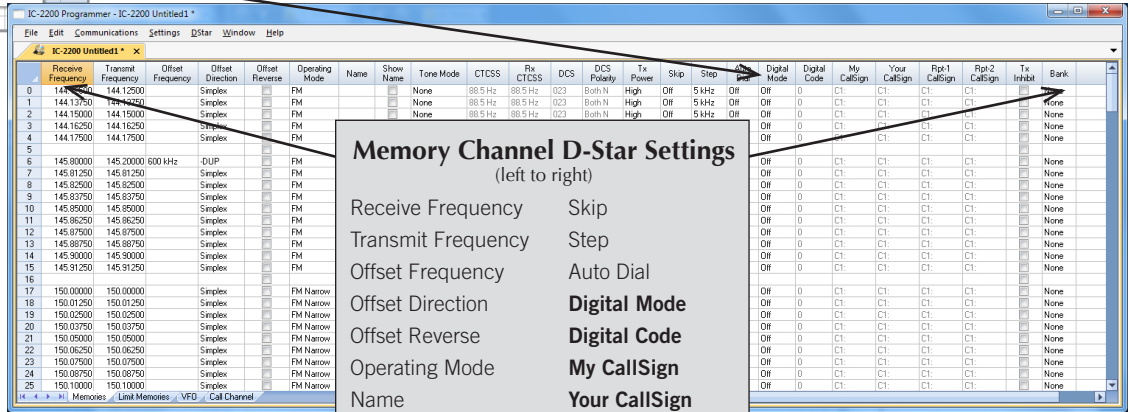
[Buy Now](#)

* Icom UT-118 required in radio for D-Star



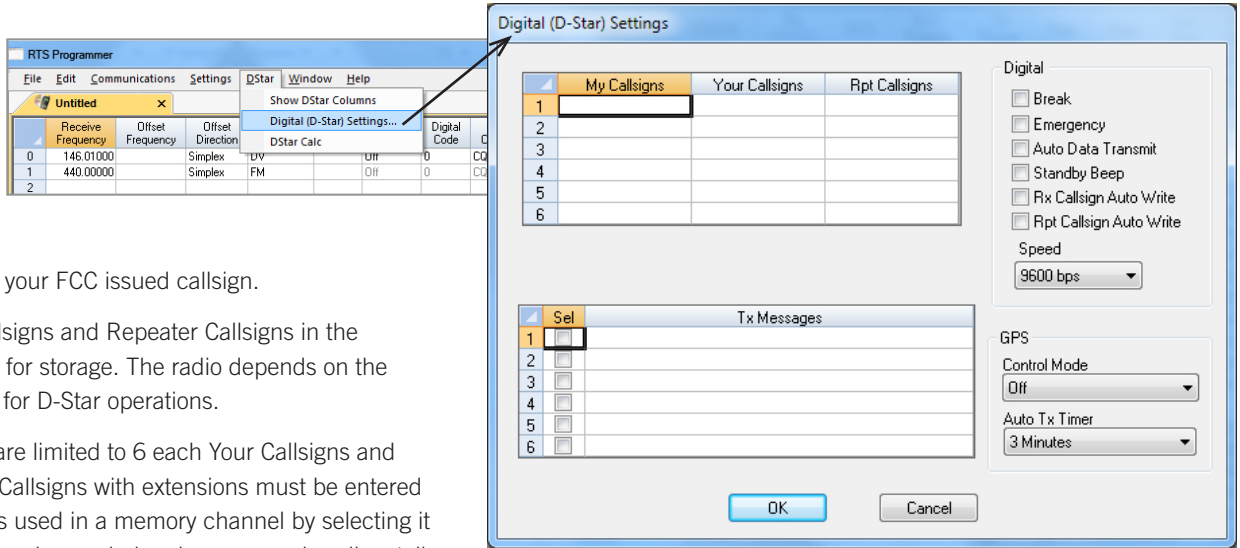
Memories and D-Star Columns

The IC-2200 handles D-Star options in Memories. It is here in the Programmer that the D-Star specifics for each channel are found.



Memory Channel D-Star Settings
 (left to right)

- Receive Frequency
- Transmit Frequency
- Offset Frequency
- Offset Direction
- Offset Reverse
- Operating Mode
- Name
- Tone Mode
- CTCSS
- Rx CTCSS
- DCS
- DCS Polarity
- Tx Power
- Skip
- Stp
- Digital Mode
- Digital Code
- My CallSign
- Your CallSign
- Rpt-1 CallSign
- Rpt-2 CallSign
- Tx Inhibit
- Bank
- Comments



D-Star Settings

Set "My Callsign" to your FCC issued callsign.

The lists of Your Callsigns and Repeater Callsigns in the IC-2200 are not just for storage. The radio depends on the entries in these lists for D-Star operations.

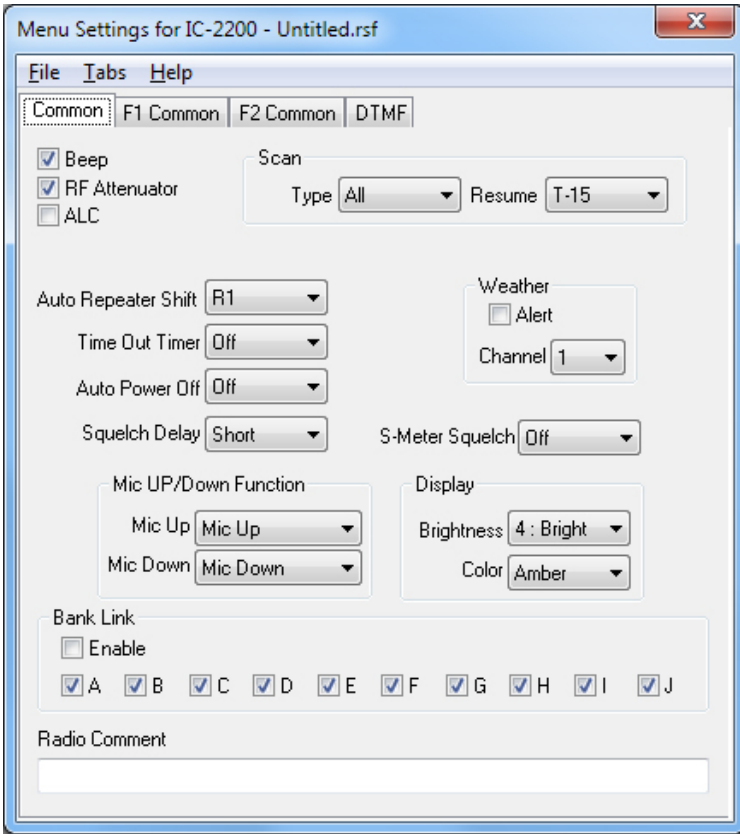
In the IC-2200 you are limited to 6 each Your Callsigns and Repeater Callsigns. Callsigns with extensions must be entered here first. An entry is used in a memory channel by selecting it from these lists. With advanced planning you can handle a talk channel, an unlink channel and several links to repeaters or reflectors. While you may not be able to set up "a link to every reflector" in one file, there are enough options to provide a great deal of D-Star activity... even worldwide contacts.

Tx messages, name/location/equipment details, etc., scroll on the radio receiving your call. Be sure to turn on the Tx message with the checkbox.

D-Star Calculator:

The D-Star calculator is not available in this program because of the limitation for Your Callsigns and Repeater Callsigns. You must remain in control of the data to organize it for optimal use.

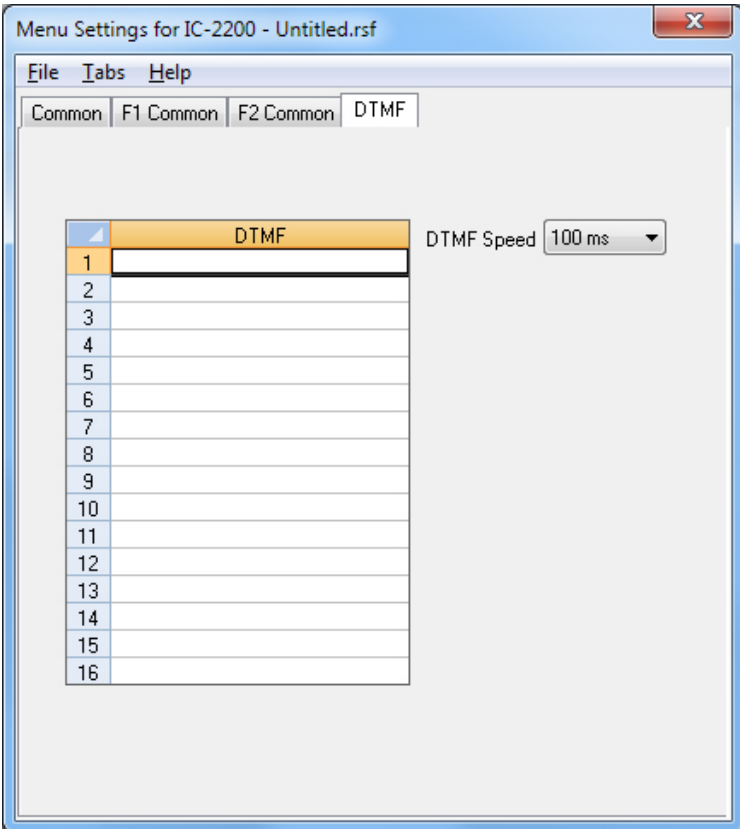
Gather information from: www.dstarinfo.com/dstar-web-calculator.aspx or www.dstarusers.org/repeaters.php to get started on your file.



Common, F1 Common and F2 Common

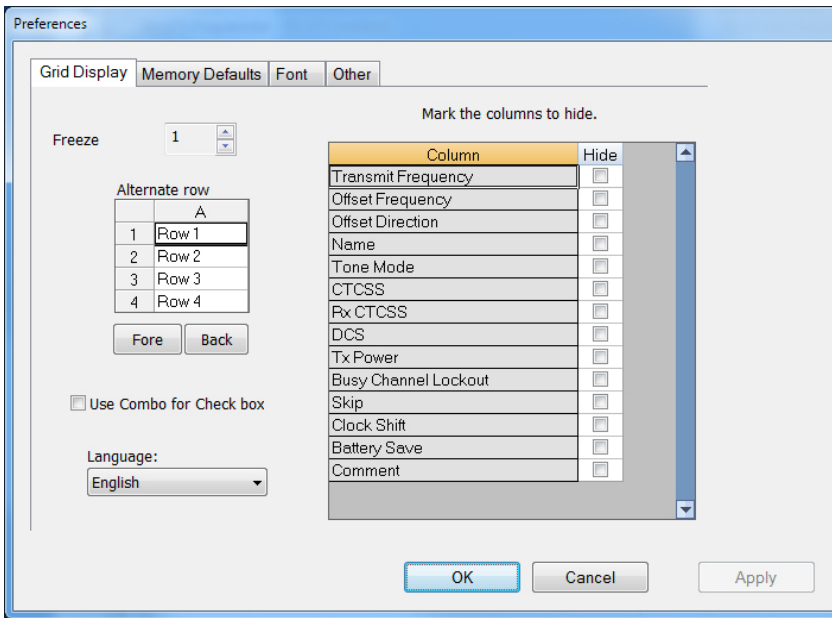
Use these screens to customize other set menu features of the radio. Check boxes toggle features on or off, drop down menus list all selections and blank boxes for personalized entry add to the ease of setting up your radio exactly like you want it.

The entries on the Settings screens are made for you to “Set and Forget”. Once settings are customized, you are prompted to save before exiting. The saved settings will be there every time you create a new frequency file.



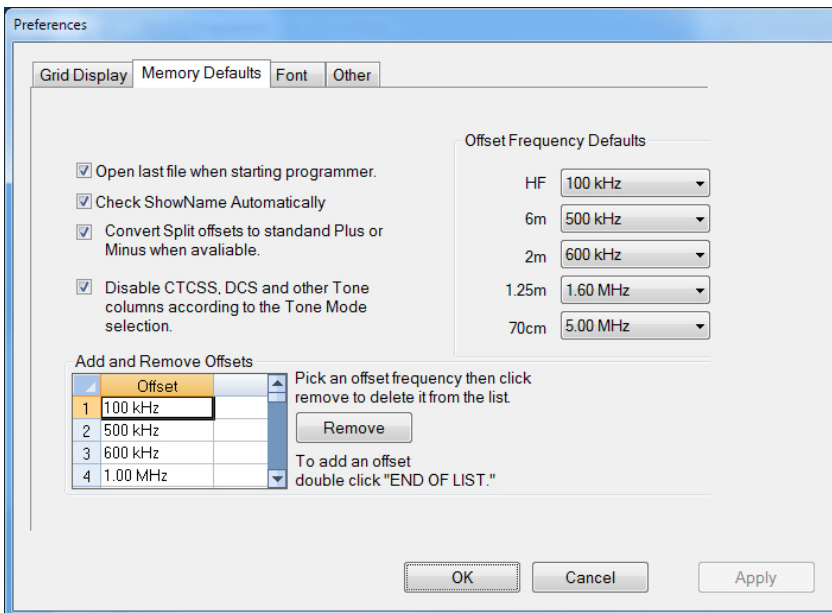
DTMF

Enter DTMF memory details and customize options for this function of the radio.



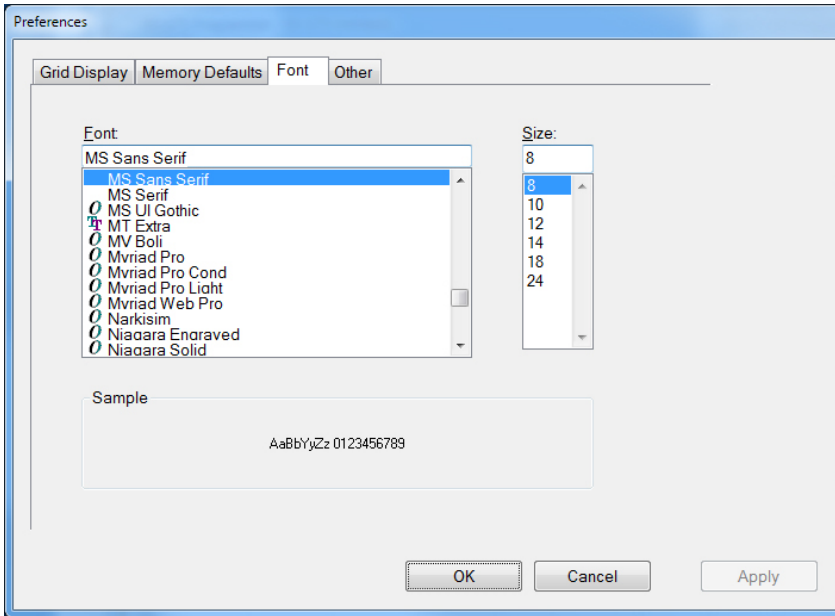
Grid Display

- RT Systems now available in English, French, German, Italian, Spanish, Portuguese and Japanese.
- Set colors for text (Fore) or background (Back) of alternate rows for easier viewing across the columns.
- Freeze columns to keep information on the screen as you scroll to the right of the page.
- Hide columns you don't use. Customize your print-out: hidden columns do not print.
- Use Combo for Check boxes – changes the grid to eliminate check box selections that are disabled on some systems.



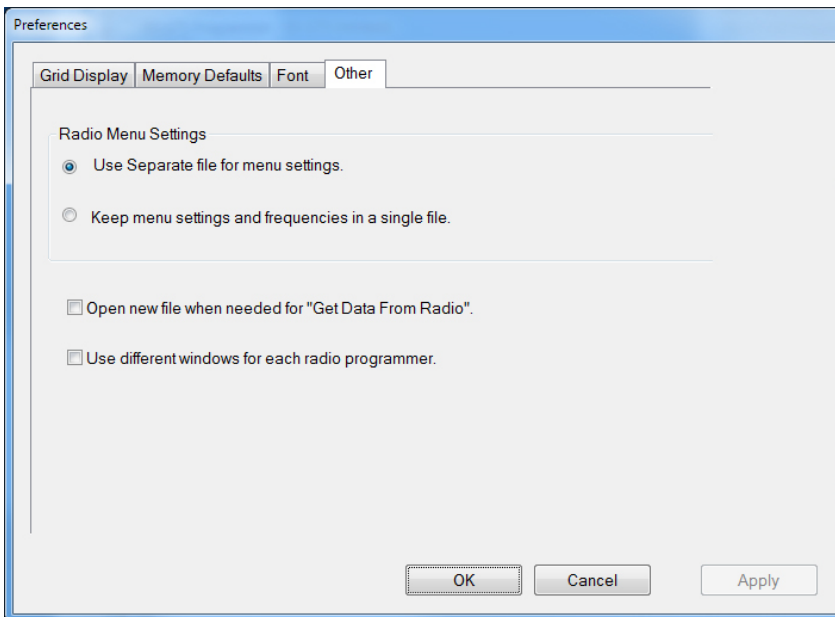
Memory Defaults

- Set options to control auto fill information for memory channel entries.



Font

- Set options to control the font in the column headers of the channel entry screens. Select any font and font size available on your computer.



Other

- Set options to control how the programmer handles the global Radio Menu Settings file.
 - Separate (default) handles the global settings of the radio in a “set and forget” fashion. Once you set these up and save the file you won’t have to reset them for a new frequency file.
 - Together as one gives you the ability to create files that are complete with frequencies and customized global settings. In this mode, each file begins with factory defaults for every option of the radio.
- Check “Get data from Radio” new file option to prevent data loss when you read from your radio into the programmer.
- Check “different window” option to make the programmer for a different radio run in completely separate window rather than in a separate tab of the same window.

[Buy Now](#)