

The WCS-9100 Programmer is designed to give you the ease and convenience of programming the memories and set menu options of your radio from your PC.

Memory Channels Include:

- 100 HF Memories plus 6 Limit Memories (3 pair)
- 100 VHF Memories plus 6 Limit Memories (3 pair)
- 100 UHF Memories plus 6 Limit Memories (3 pair)
- 100 1.2GHz Memories plus 6 Limit Memories (3 pair)
- 500 DR Memories
- 40 Satellite Memories (20 pair, Uplink/Downlink)
- 52 VFO Memories (3 per Band)
- 4 Call Channels (1 per Band)
- 50 GPS Memories

Other Menu Item Categories Include:

- Common
- Receive
- Transmit
- CW/RTTY
- GPS

The Programmer Is for so Much More than Just Memory Management.

With the WCS-9100 Programmer you can begin a new “factory fresh” file into which frequencies and option settings are entered. Or, you can read from the radio, store these details on your computer and make changes. Then, with minimal button pushing, send the new configuration back to the radio.

The Programmer allows you to create and save as many files as you want for your radio. Files can even be shared between users via email or the Internet. Any RT Systems Version 4.50 program can open a file from any other RT Systems Version 4.50 programmer... even from a different radio.

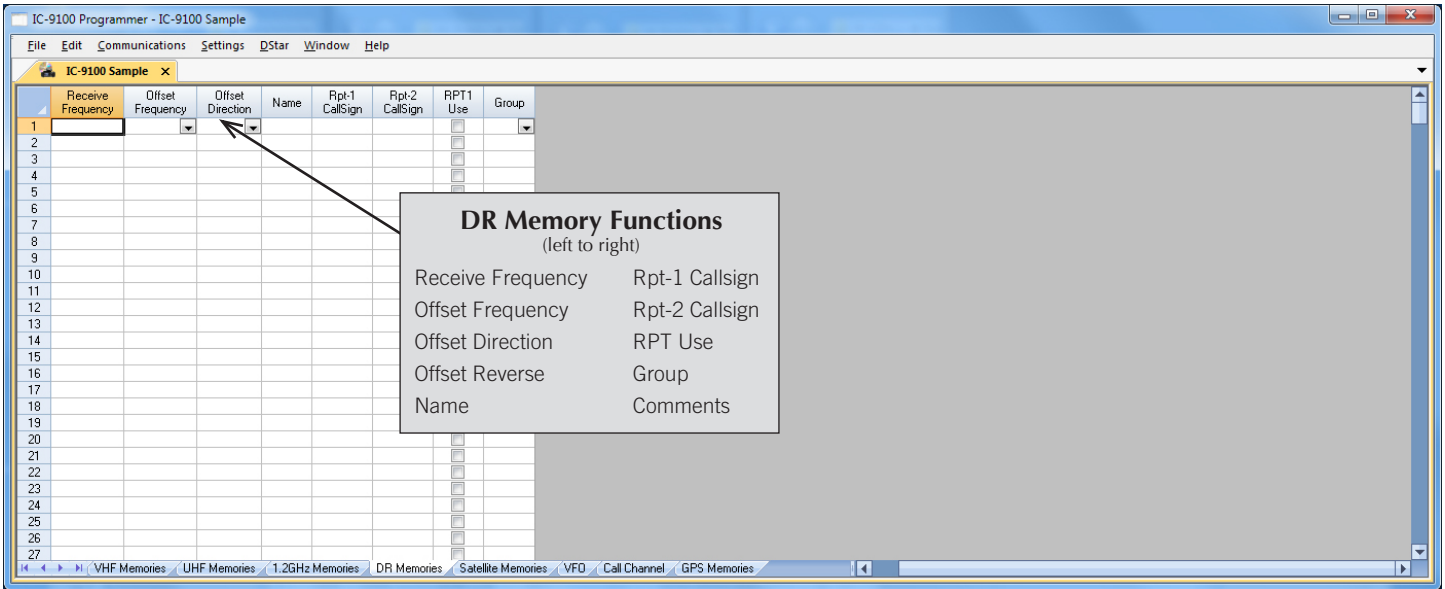
Managing all the options of this great little radio becomes easy with the Programmer. The cut, copy, paste and insert features of the Programmer make channel management easier than ever.

Open more than one file at a time. Memory channel information can be copied from one file to another within the Programmer making it really easy to set up a new file.



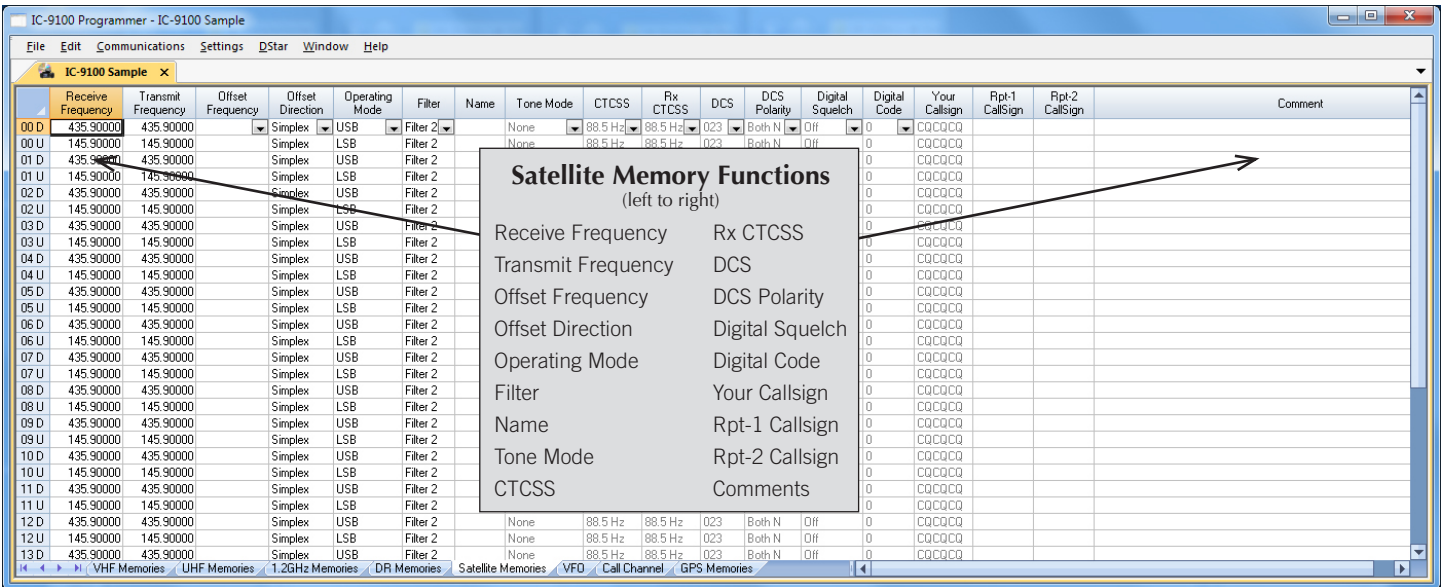
Hardware Requirements:

A PC running Windows XP, Vista, Windows 7 (32 or 64 bit) or Windows 8 (desktop version). A CD drive (local or network) for installation. A free USB port. The RT Systems USB-RTS01 interface cable, or a standard USB-A to USB-B cable. The USB-RTS01 cable connects the radio to the computer from the USB port on the computer to the CI-V remote jack on the radio. The standard USB-A to USB-B cable connects the radio to the computer from a USB port on the computer to the USB jack on the radio.



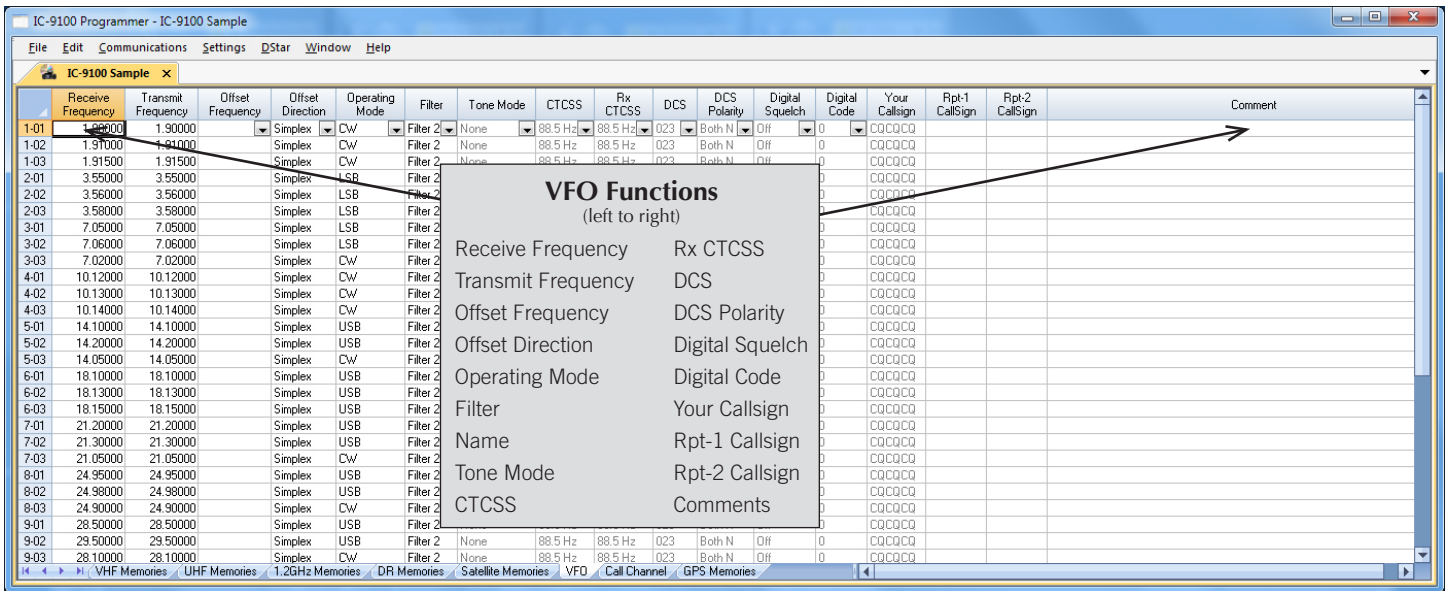
DR Memories

The DR Channels are special memories of the radio used for quick manual D-Star setup from the radio's face. D-Star channels do not have to be programmed here before being saved to memory.



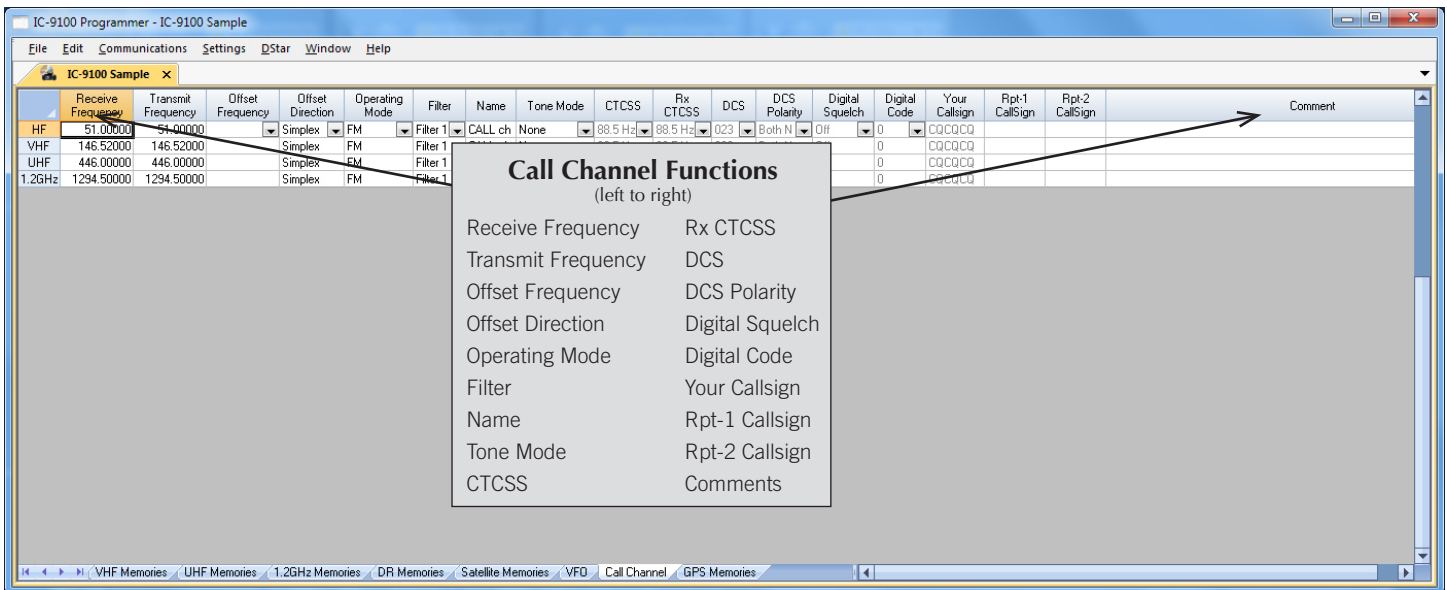
Satellite Memories

20 pair of Uplink and Downlink frequencies for satellite operations.



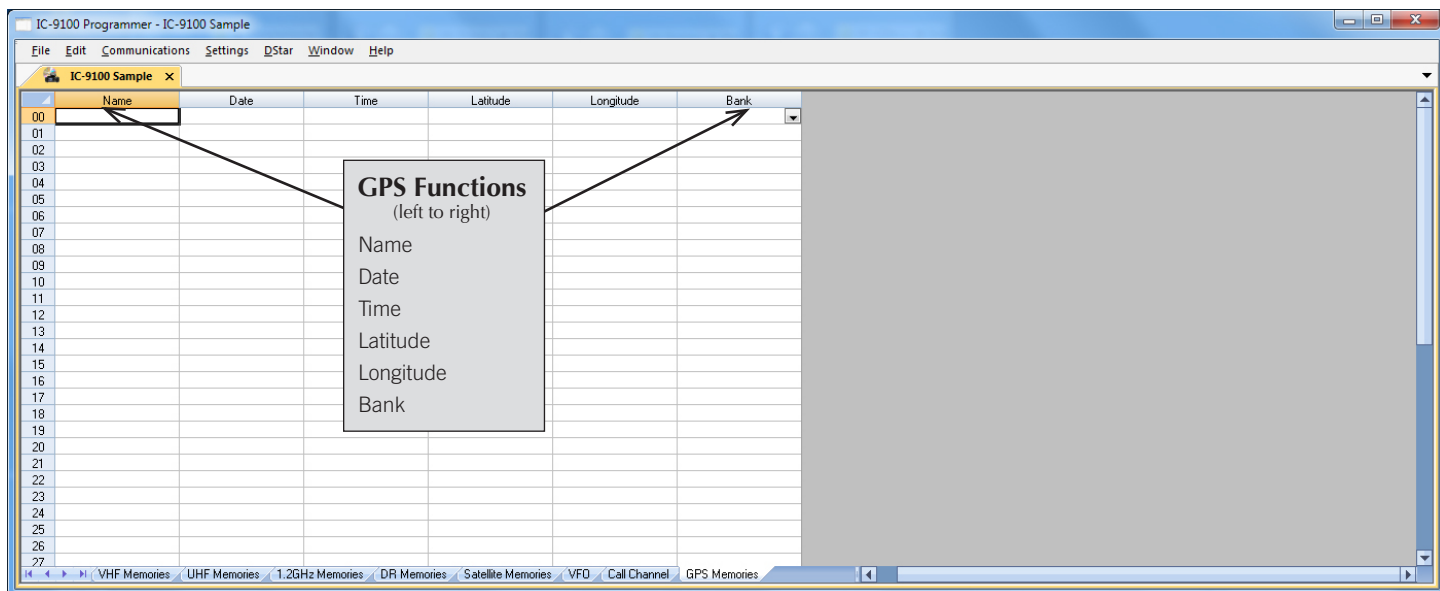
VFO

The program makes available the same VFO's as in the radio (usually one per band). Remember these are not real memory channels since the details are lost as soon as you tune the radio manually. There is no one button recall for these. You do not need to program into VFO before programming details into a memory channel. These channels are preprogrammed in the radio and while the frequency can be changed to another within the band, they cannot be left blank.



Call Channel

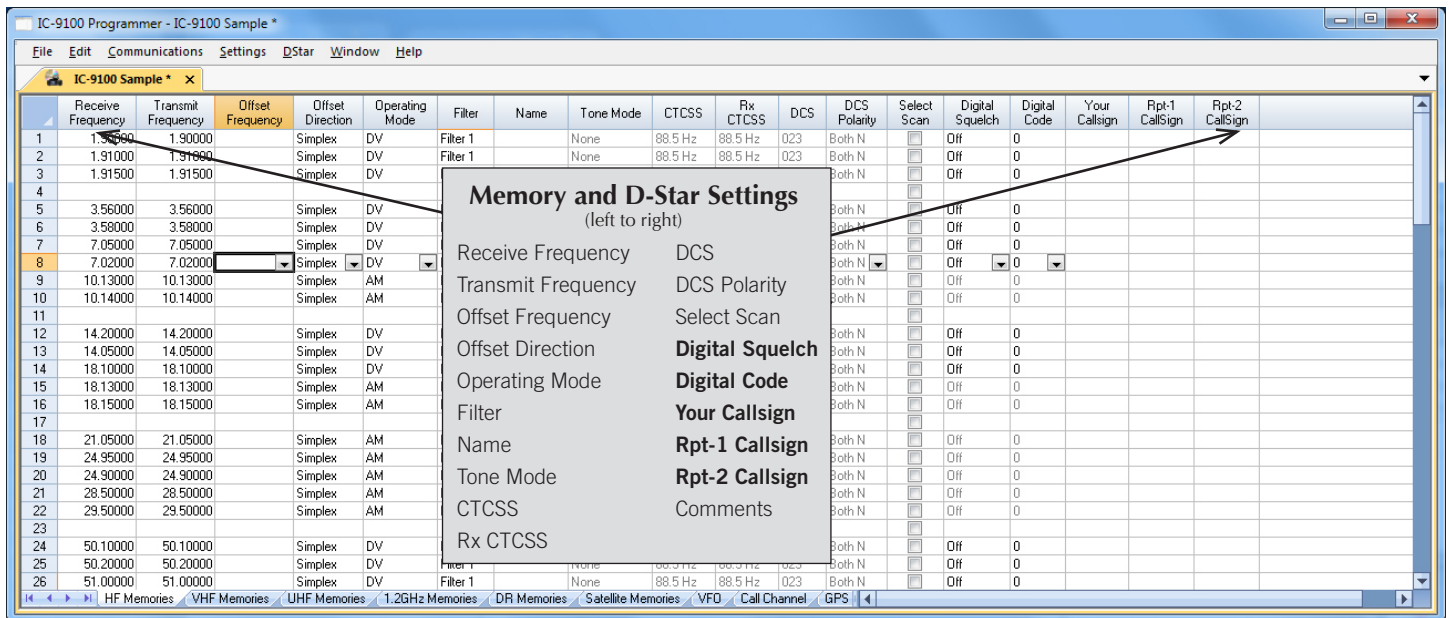
Home/Call channels are special memories accessed through one button recall on the radio. These channels are preprogrammed in the radio and while the frequency can be changed to another within the band, they cannot be left blank.



GPS Memories

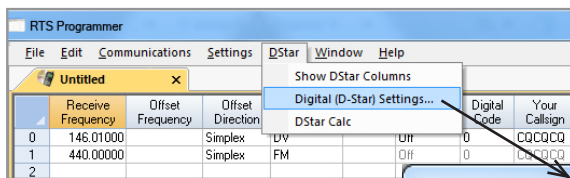
Once stored in the radio during GPS operations, these channels are read from the radio with the other details.

[Buy Now](#)



Memories and D-Star Columns

The IC-9100 handles D-Star setting on HF, VHF, UHF and 1.2 GHz Memories. Every memory channel in the Programmer has D-Star specifics. The D-Star columns become active once Operating Mode is set to DV.

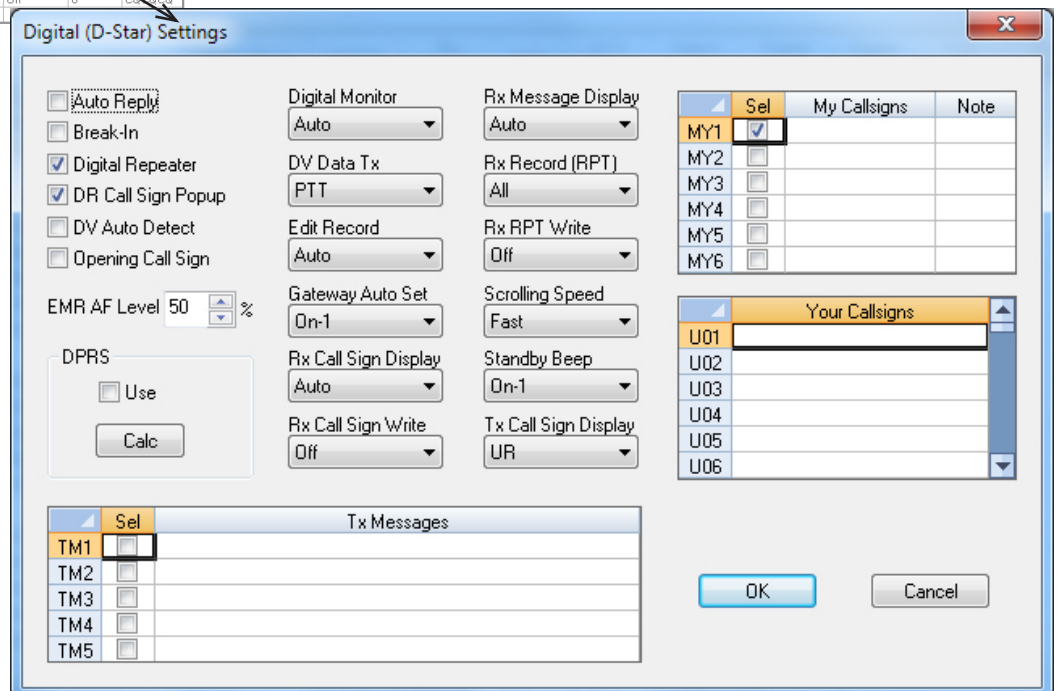


D-Star Settings

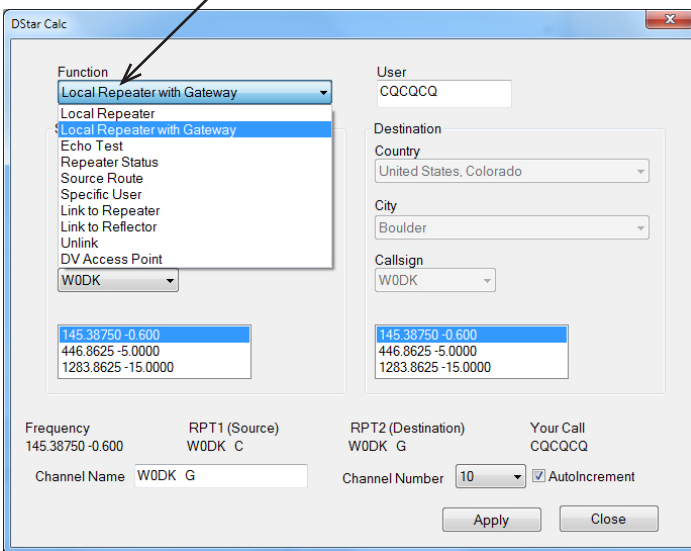
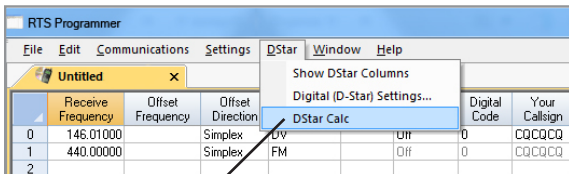
Set "My Callsign" to your FCC issued callsign.

The list of Your Callsigns is just storage. The callsigns used during a transmission are programmed in the memory channel. This list is available to make a selection from; however, the callsign does not need to be entered here first.

Tx messages, name/location/equipment details, etc., scroll on the radio receiving your call.

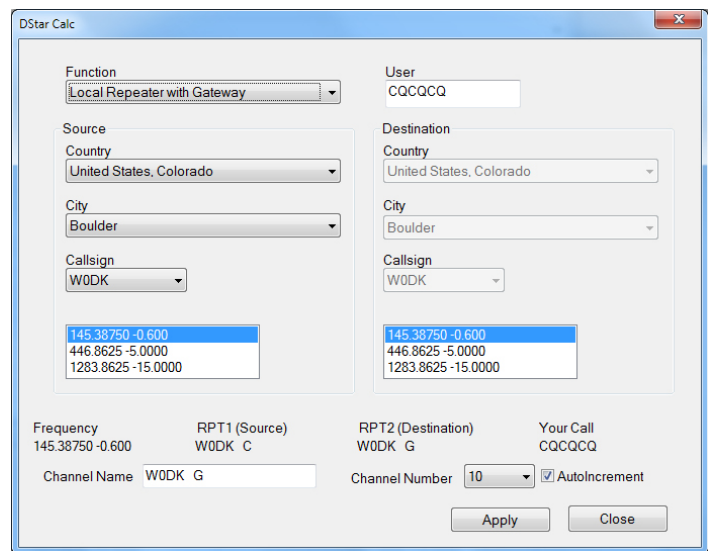


Make programming D-Star channels easy with the built in D-Star Calculator. The information is updated automatically on your system with Programmer updates. Use the Calculator to automatically enter Callsigns and extensions along with frequency details... no more space counting to get those extensions right! Set up channels for any D-Star function (talk channel, a link to a repeater or reflector, unlink, echo test, etc.) or details for a DV Access Point with just a few simple mouse clicks.



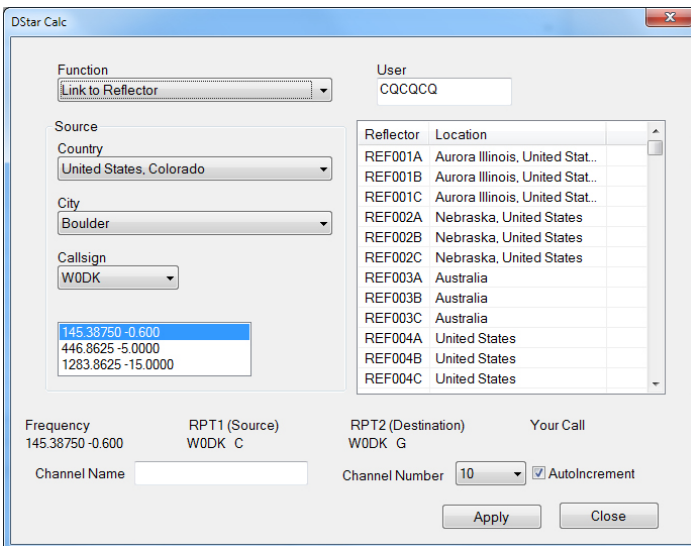
Channel Type

Use the calculator to select the function for channel.



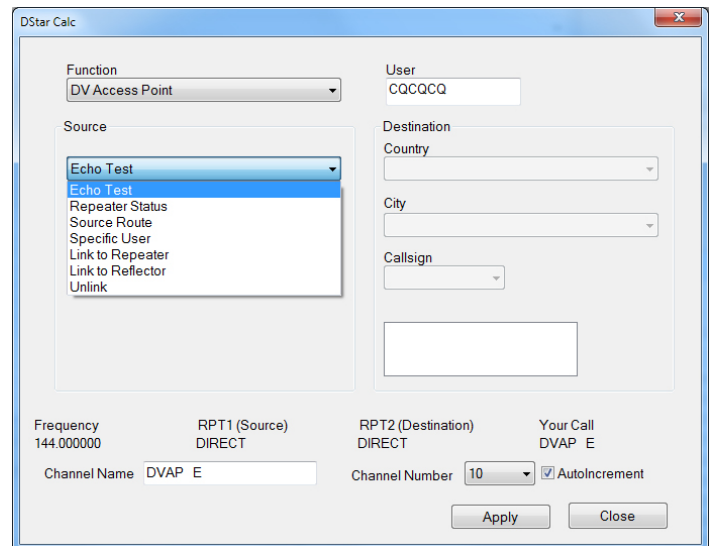
Talk Channel

Set up your "talk" channel. Use boxes on the left for local repeater.



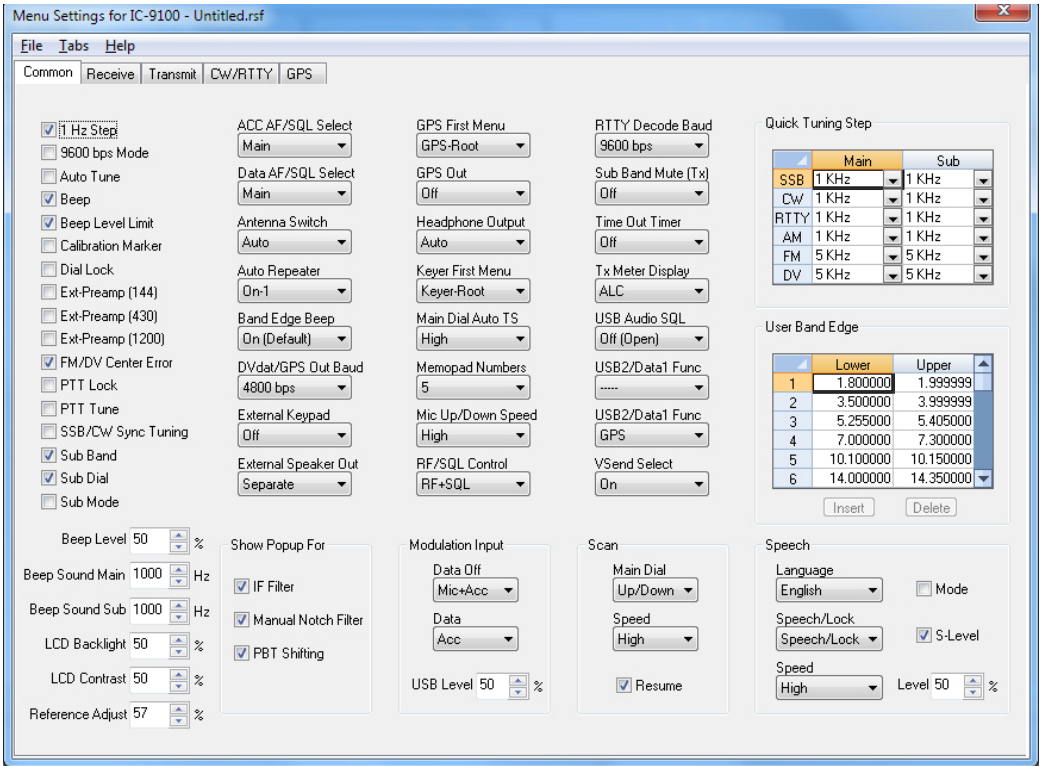
Reflector

Reflectors world-wide are included. Just select and apply to set up channel.



DV Access

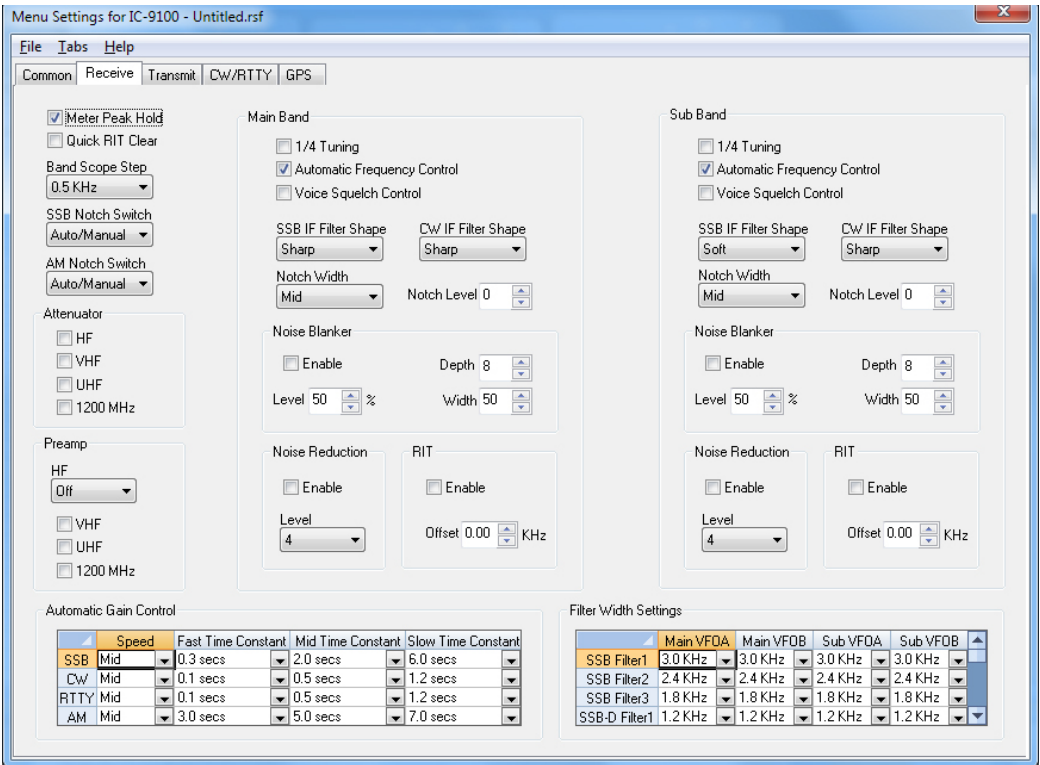
Details for DVAP can be set up, including frequency and function.



Common

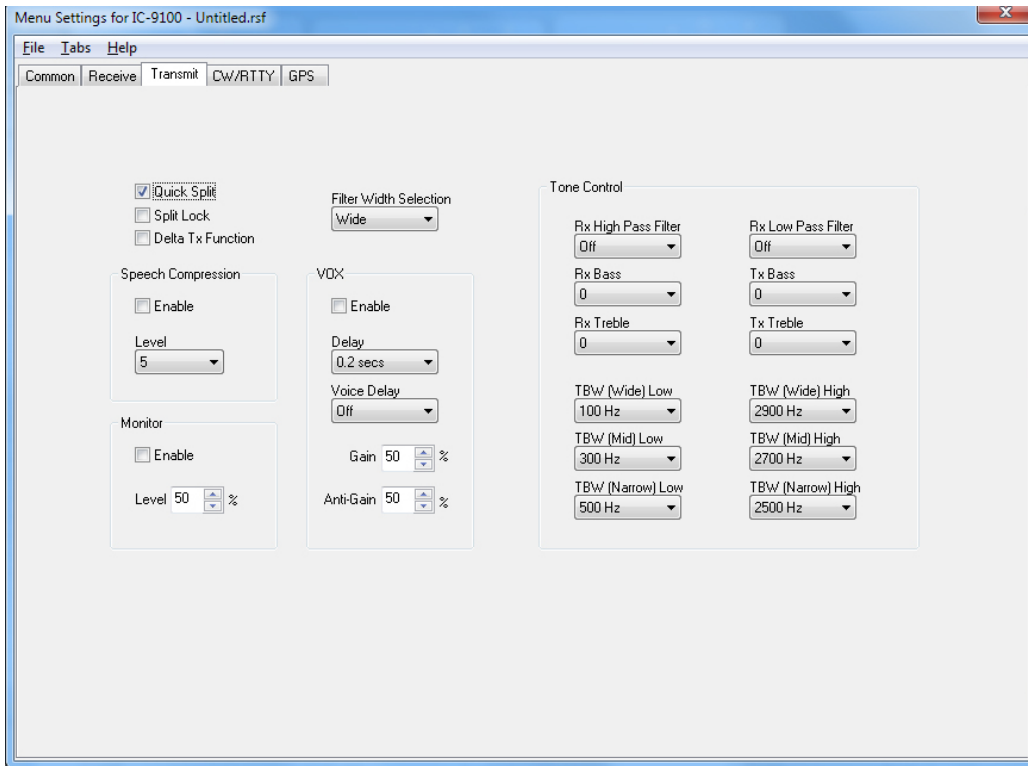
Use these screens to customize other set menu features of the radio. Check boxes toggle features on or off, drop down menus list all selections and blank boxes for personalized entry add to the ease of setting up your radio exactly like you want it.

The entries on the Settings screens are made for you to “Set and Forget”. Once settings are customized, you are prompted to save before exiting. The saved settings will be there every time you create a new frequency file.



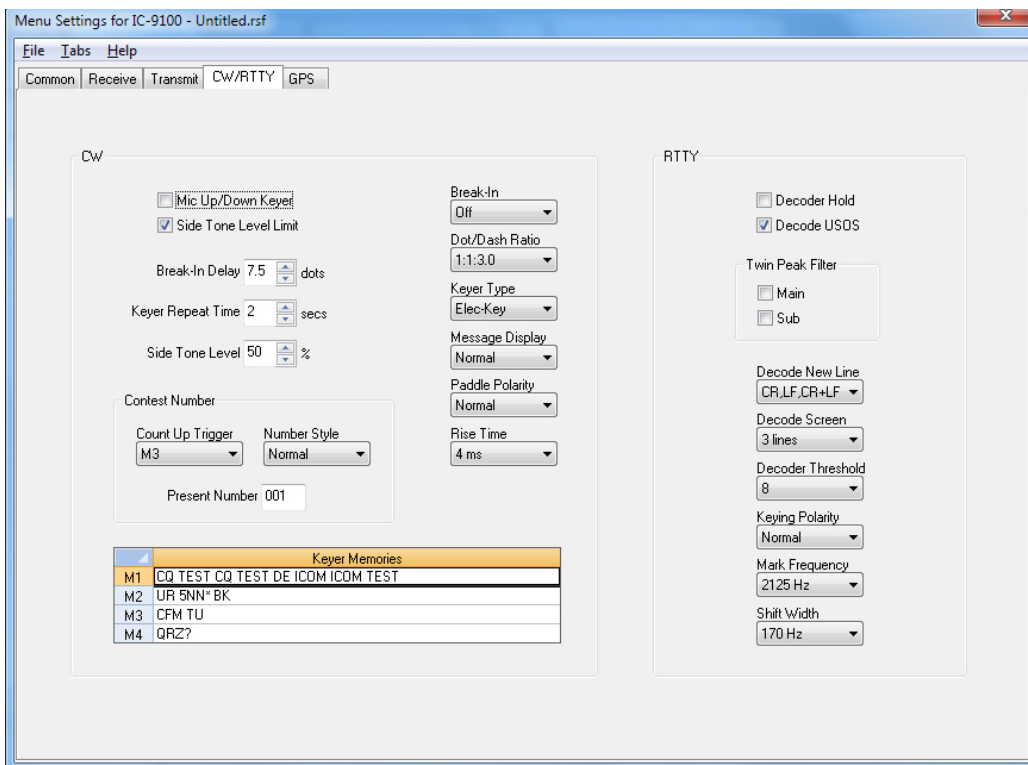
Receive

Customize features for the Main and Sub Band receivers.



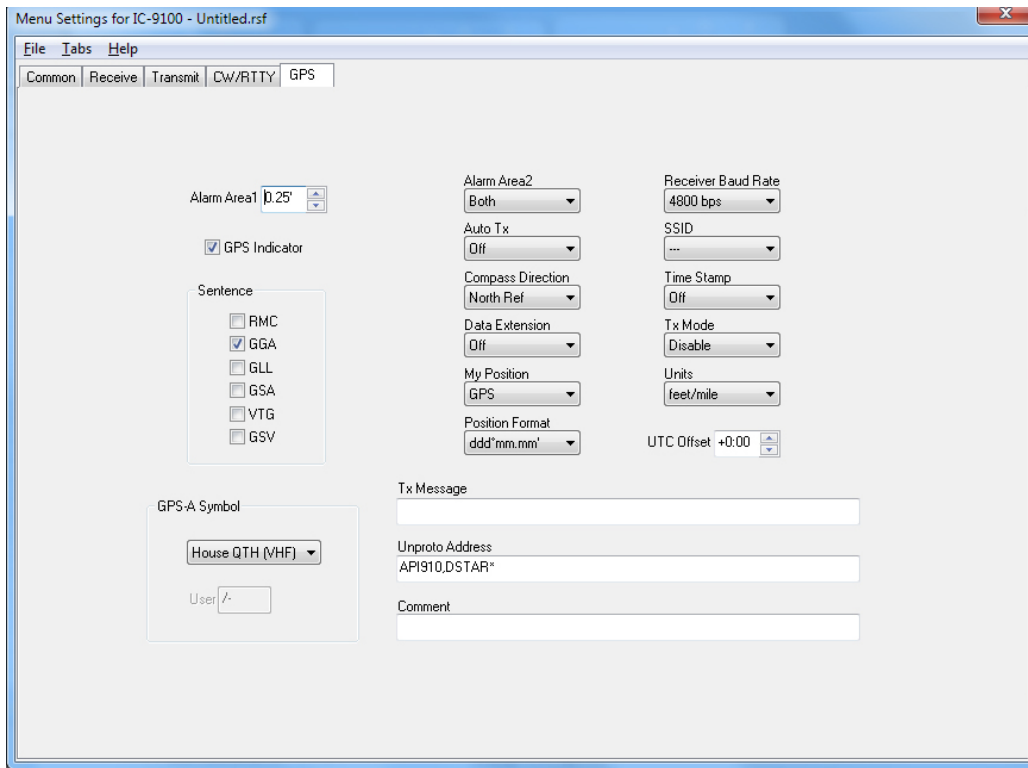
Transmit

Customize options for the transmitter.

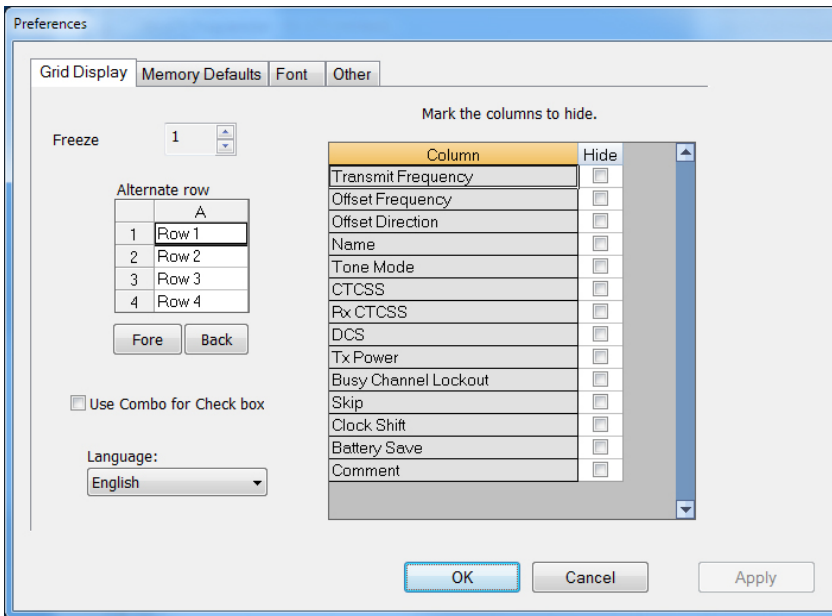


CW/RTTY

Use these settings to adjust the CW and RTTY menu items of the radio.

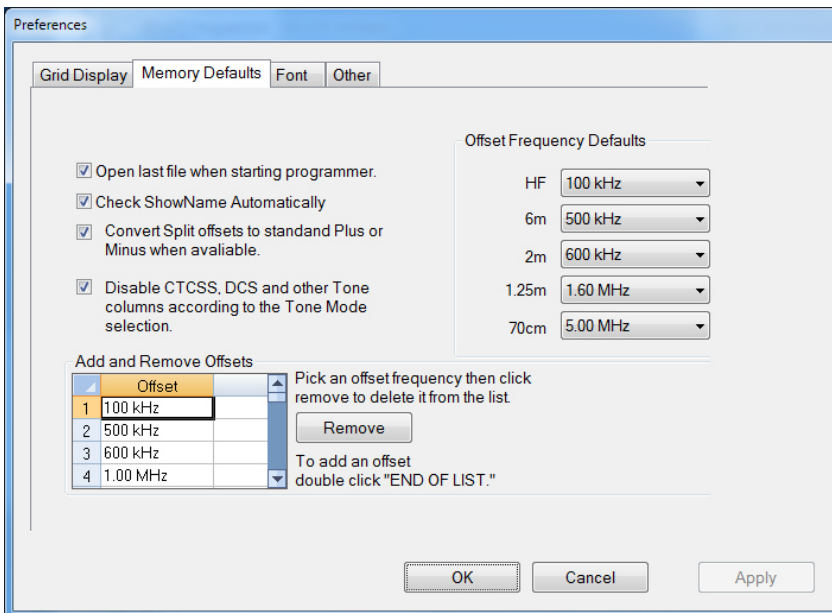


GPS
Configure GPS function settings.



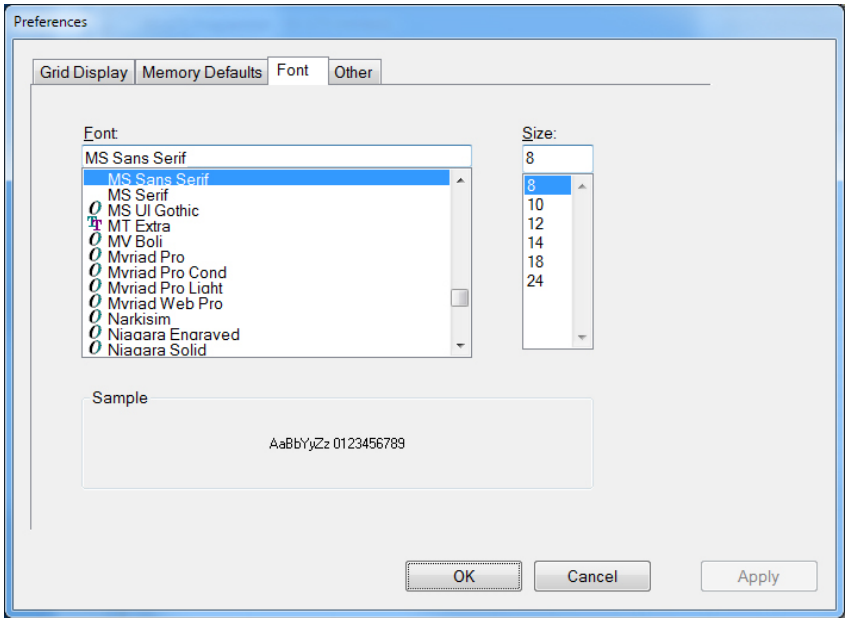
Grid Display

- RT Systems now available in English, French, German, Italian, Spanish, Portuguese and Japanese.
- Set colors for text (Fore) or background (Back) of alternate rows for easier viewing across the columns.
- Freeze columns to keep information on the screen as you scroll to the right of the page.
- Hide columns you don't use. Customize your print-out: hidden columns do not print.
- Use Combo for Check boxes – changes the grid to eliminate check box selections that are disabled on some systems.



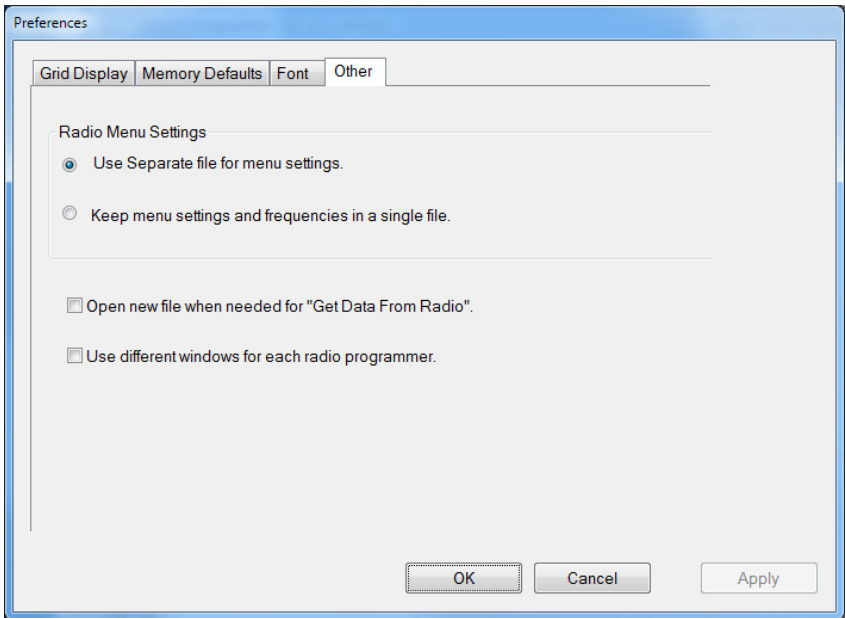
Memory Defaults

- Set options to control auto fill information for memory channel entries.



Font

- Set options to control the font in the column headers of the channel entry screens. Select any font and font size available on your computer.



Other

- Set options to control how the programmer handles the global Radio Menu Settings file.
 - Separate (default) handles the global settings of the radio in a “set and forget” fashion. Once you set these up and save the file you won’t have to reset them for a new frequency file.
 - Together as one gives you the ability to create files that are complete with frequencies and customized global settings. In this mode, each file begins with factory defaults for every option of the radio.
- Check “Get data from Radio” new file option to prevent data loss when you read from your radio into the programmer.
- Check “different window” option to make the programmer for a different radio run in completely separate window rather than in a separate tab of the same window.

[Buy Now](#)