

The WCS-R20 Programmer is designed to give you the ease and convenience of programming the memories and set menu options of your radio from your PC.

Memory Channels Include:

- 1,000 Memory Channels
- 4 Limit Memories (2 pair)
- 200 Auto Write Channels
- 70 TV Channels
- 10 PreSet Channels

Other Menu Item Categories Include:

- Common

The Programmer Is for so Much More than Just Memory Management.

With the WCS-R20 Programmer you can begin a new “factory fresh” file into which frequencies and option settings are entered. Or, you can read from the radio, store these details on your computer and make changes. Then, with minimal button pushing, send the new configuration back to the radio.

The Programmer allows you to create and save as many files as you want for your radio. Files can even be shared between users via email or the Internet.

Managing all the options of this radio becomes easy with the Programmer. The cut, copy, paste and insert features of the Programmer make channel management easier than ever.

Open more than one file at a time. Memory channel information can be copied from one file to another within the Programmer making it really easy to set up a new file.



Hardware Requirements:

A PC running Windows XP (SP3), Vista, Windows 7 (32 or 64 bit) or Windows 8 or 8.1 (full version). CD drive for installation. Local USB port and a standard USB to USB Mini-B interface cable. The cable connects the radio to the computer from the USB port on the computer to the USB port on the side of the radio.

IC-R20 Programmer - IC-R20 Sample.ICR20

	Receive Frequency	Transmit Frequency	Offset Frequency	Offset Direction	Operating Mode	Name	Tone Mode	CTCSS	DCS	DCS Polarity	Skip	FM Step	SSB Step	Bank	Comment
0A	144.00000	144.00000		Simplex	FM		None	88.5 Hz	023	Normal	Skip	10 Hz	1 kHz		
0B	146.00000	146.00000		Simplex	FM		None	88.5 Hz	023	Normal	Skip	10 Hz	1 kHz		
1A	430.00000	430.00000		Simplex	FM		None								
1B	440.00000	440.00000		Simplex	FM		None								
2A															
2B															
3A															
3B															
4A															
4B															
5A															
5B															
6A															
6B															
7A															
7B															
8A															
8B															
9A															
9B															
10A															
10B															
11A															
11B															
12A															
12B															

Limit Memories
(left to right)

- Receive Frequency
- Transmit Frequency
- Offset Frequency
- Offset Direction
- Operating Mode
- Name
- Tone Mode
- CTCSS
- DCS
- DCS Polarity
- Skip
- FM Step
- SSB Step
- Bank
- Comment

Limit Memories

Limit Memories are used by the radio for Program Scan. Program the same details for Limit Memories as for regular memory channels. Many of the Limit Memories are preprogrammed in the radio and while the frequency can be changed to another within the band, they cannot be left blank.

IC-R20 Programmer - IC-R20 Sample.ICR20

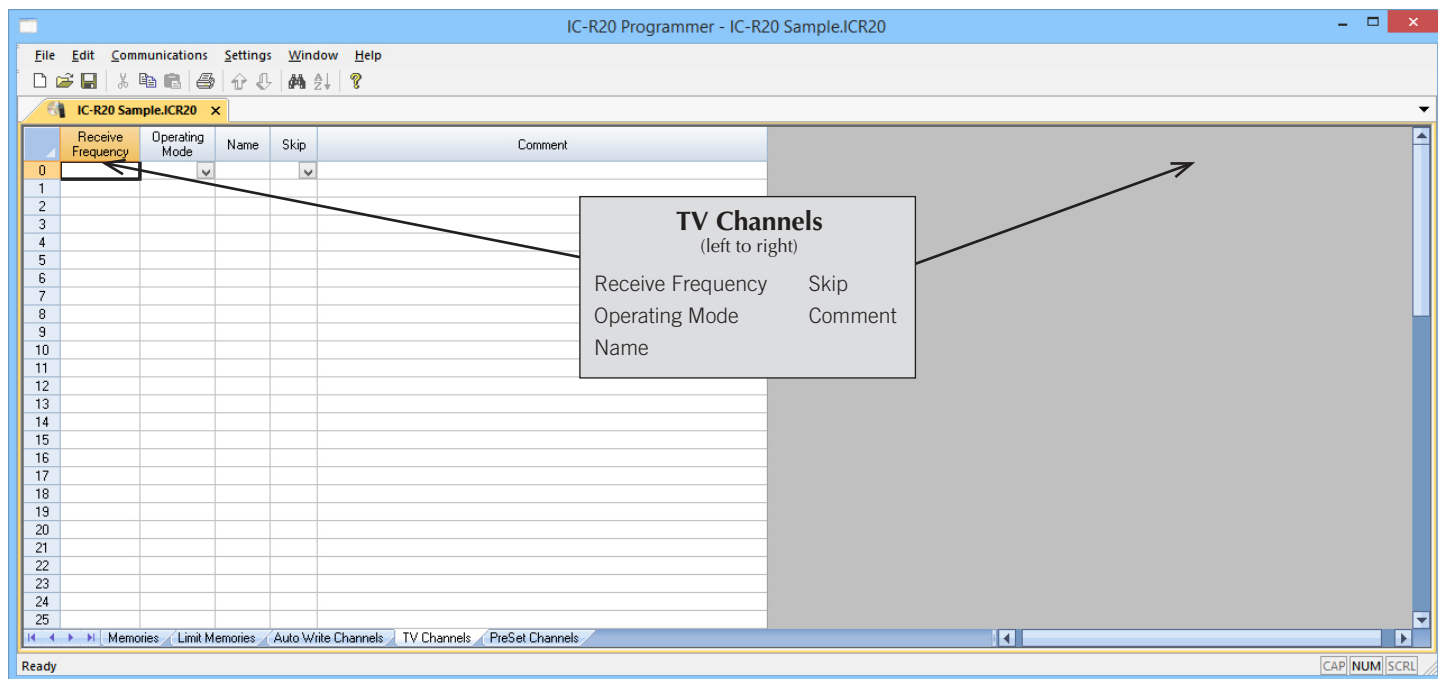
	Receive Frequency	Transmit Frequency	Offset Frequency	Offset Direction	Operating Mode	Tone Mode	CTCSS	DCS	DCS Polarity	FM Step	SSB Step	Comment
0												
1												
2												
3												
4												
5												
6												
7												
8												
9												
10												
11												
12												
13												
14												
15												
16												
17												
18												
19												
20												
21												
22												
23												
24												
25												

Auto Write Channels
(left to right)

- Receive Frequency
- Transmit Frequency
- Offset Frequency
- Offset Direction
- Operating Mode
- Tone Mode
- CTCSS
- DCS
- DCS Polarity
- FM Step
- SSB Step
- Comment

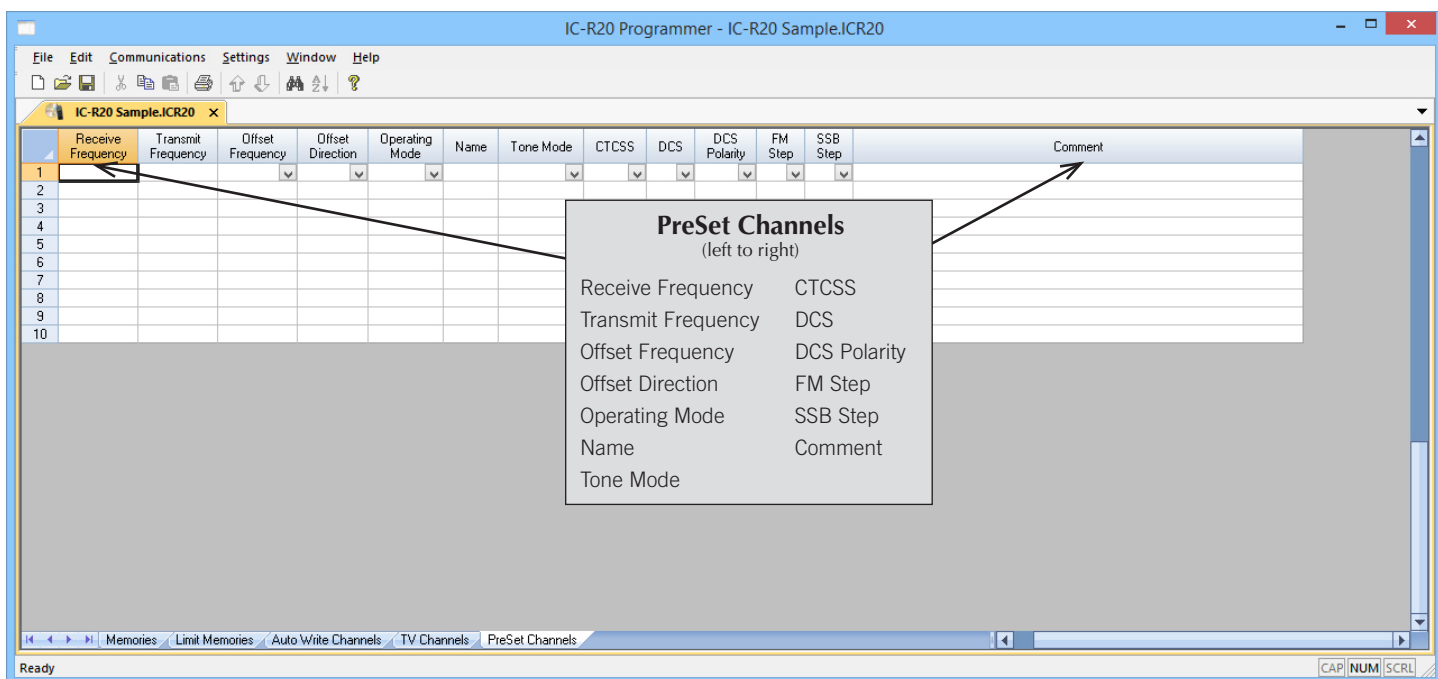
Auto Write Channels

These memory channels are stored automatically when Auto-memory Write Scan is used on the radio. Auto-write Memories are lost from the radio if you clear the stored channels to scan again. They become permanent only if they are saved as regular memory channels. Use the Programmer to easily move the ones you want to save permanently to the regular Memories with copy and paste.



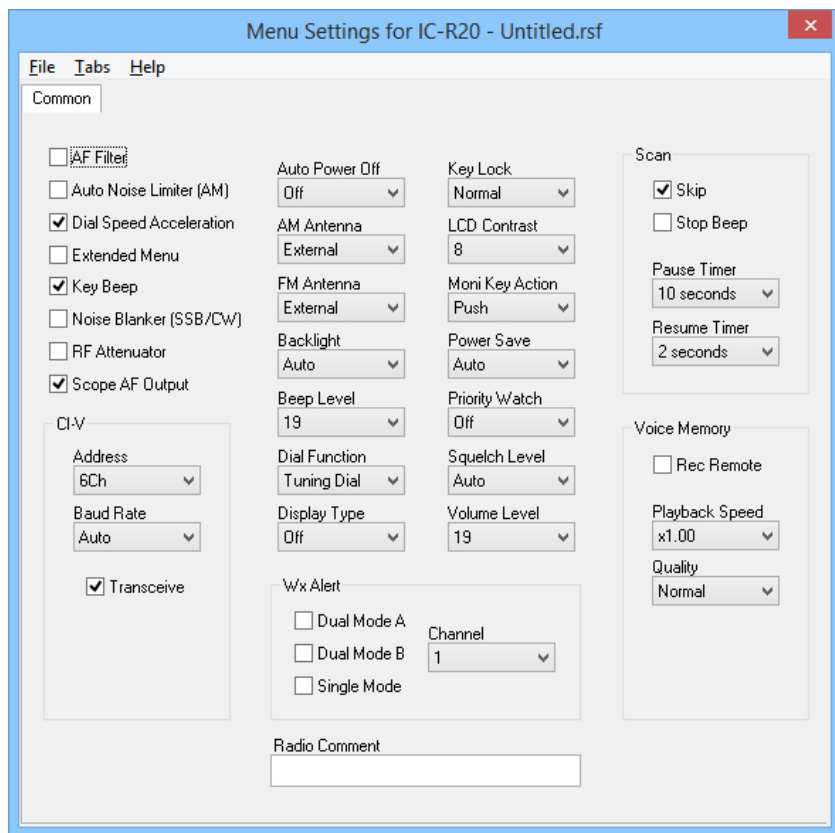
TV Channels

Available TV channel frequencies depend on the radio's version. This screen in the Programmer will be populated with those frequencies specific to your radio model once you complete Communications I Get data from radio. Make changes to these channels to suit your area and activities. The Channels can be deleted from the list to remove them from the radio. The Instruction Manual for the radio details these frequencies for all the different models should you need to recreate the list for your radio.



PreSet Channels

Ten memory channels are designated for quick recall of favorite frequencies you use most often. Use the Programmer to easily fill these with selections from other types of memories using copy and paste. No need to enter details again for a favorite channel.



Menu Settings for IC-R20 - Untitled.rsf

File Tabs Help

Common

☐ AF Filter

☐ Auto Noise Limiter (AM)

☒ Dial Speed Acceleration

☐ Extended Menu

☒ Key Beep

☐ Noise Blanker (SSB/CW)

☐ RF Attenuator

☒ Scope AF Output

CI-V

Address: 6Ch

Baud Rate: Auto

☒ Transceive

Auto Power Off: Off

AM Antenna: External

FM Antenna: External

Backlight: Auto

Beep Level: 19

Dial Function: Tuning Dial

Display Type: Off

Wx Alert

☐ Dual Mode A

☐ Dual Mode B

☐ Single Mode

Channel: 1

Key Lock: Normal

LCD Contrast: 8

Moni Key Action: Push

Power Save: Auto

Priority Watch: Off

Squelch Level: Auto

Volume Level: 19

Scan

☒ Skip

☐ Stop Beep

Pause Timer: 10 seconds

Resume Timer: 2 seconds

Voice Memory

☐ Rec Remote

Playback Speed: x1.00

Quality: Normal

Radio Comment

Common

Use this screen to customize other set menu features of the radio. Check boxes toggle features on or off, drop down menus list all selections and blank boxes for personalized entry add to the ease of setting up your radio exactly like you want it.

The entries on the Settings screens are made for you to "Set and Forget". Once settings are customized, you are prompted to save before exiting. The saved settings will be there every time you create a new frequency file.

[Buy Now](#)

The screenshot shows the 'Preferences' dialog box with the 'Grid Display' tab selected. The 'Freeze' dropdown is set to '1'. The 'Alternate row' section shows a table with rows 1 to 4 and a column 'A'. The 'Mark the columns to hide' section shows a table with columns and checkboxes for hiding them.

Column	Hide
Transmit Frequency	<input type="checkbox"/>
Offset Frequency	<input type="checkbox"/>
Offset Direction	<input type="checkbox"/>
Name	<input type="checkbox"/>
Tone Mode	<input type="checkbox"/>
CTCSS	<input type="checkbox"/>
Rx CTCSS	<input type="checkbox"/>
DCS	<input type="checkbox"/>
Tx Power	<input type="checkbox"/>
Busy Channel Lockout	<input type="checkbox"/>
Skip	<input type="checkbox"/>
Clock Shift	<input type="checkbox"/>
Battery Save	<input type="checkbox"/>
Comment	<input type="checkbox"/>

Buttons: OK, Cancel, Apply

Grid Display

- RT Systems now available in English, French, German, Italian, Spanish, Portuguese and Japanese.
- Set colors for text (Fore) or background (Back) of alternate rows for easier viewing across the columns.
- Freeze columns to keep information on the screen as you scroll to the right of the page.
- Hide columns you don't use. Customize your print-out: hidden columns do not print.
- Use Combo for Check boxes – changes the grid to eliminate check box selections that are disabled on some systems.

The screenshot shows the 'Preferences' dialog box with the 'Memory Defaults' tab selected. The 'Offset Frequency Defaults' section shows a table with frequency ranges and their corresponding offsets. The 'Add and Remove Offsets' section shows a table with a list of offsets and a 'Remove' button.

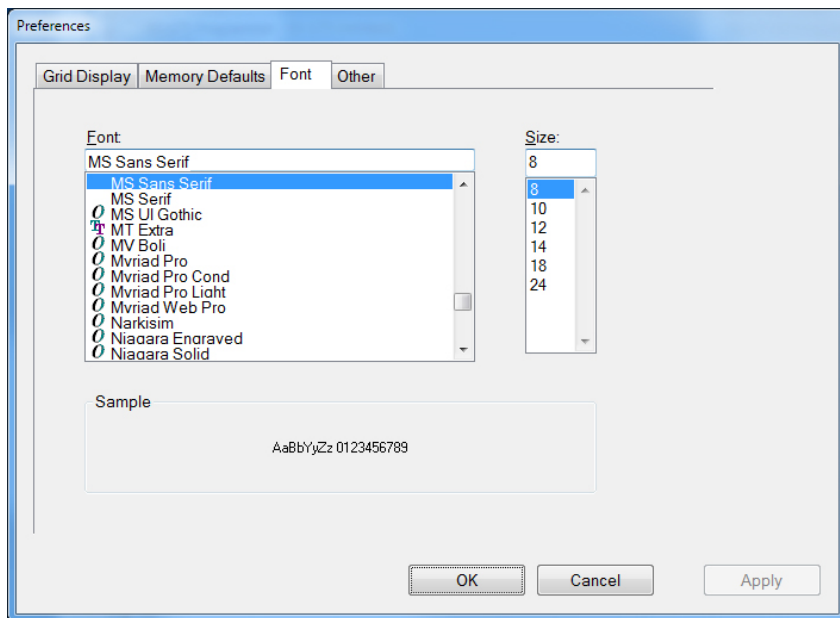
Offset Frequency Defaults	
HF	100 kHz
6m	500 kHz
2m	600 kHz
1.25m	1.60 MHz
70cm	5.00 MHz

Add and Remove Offsets	
1	100 kHz
2	500 kHz
3	600 kHz
4	1.00 MHz

Buttons: OK, Cancel, Apply

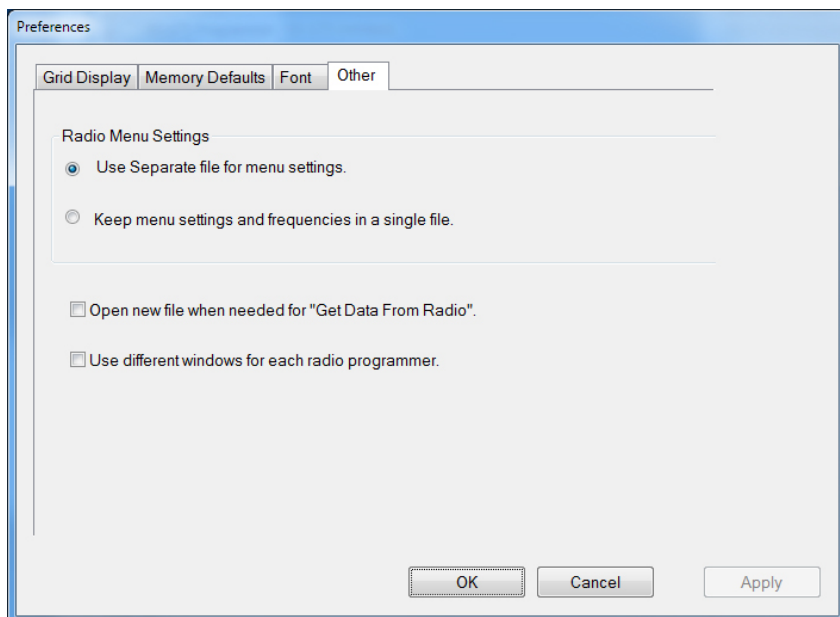
Memory Defaults

- Set options to control auto fill information for memory channel entries.



Font

- Set options to control the font in the column headers of the channel entry screens. Select any font and font size available on your computer.



Other

- Set options to control how the programmer handles the global Radio Menu Settings file.
 - Separate (default) handles the global settings of the radio in a “set and forget” fashion. Once you set these up and save the file you won’t have to reset them for a new frequency file.
 - “Single file” gives you the ability to create files that are complete with frequencies and customized global settings. In this mode, each file begins with factory defaults for every option of the radio.
- Check “Get data from Radio” new file option to prevent data loss when you read from your radio into the programmer.
- Check “different window” option to make the programmer for a different radio run in completely separate window rather than in a separate tab of the same window.

Buy Now