

The WCS-R6 Programmer is designed to give you the ease and convenience of programming the memories and set menu options of your radio from your PC.

Memory Channels Include:

- 1300 Memory Channels
- 50 Limit Memories (25 pairs)
- 200 Auto Write Memories

Other Menu Item Categories Include:

- Common

The Programmer Is for so Much More than Just Memory Management.

With the WCS-R6 Programmer you can begin a new “factory fresh” file into which frequencies and option settings are entered. Or, you can read from the radio, store these details on your computer and make changes. Then, with minimal button pushing, send the new configuration back to the radio.

The Programmer allows you to create and save as many files as you want for your radio. Files can even be shared between users via email or the Internet.

Managing all the options of this radio becomes easy with the Programmer. The cut, copy, paste and insert features of the Programmer make channel management easier than ever.

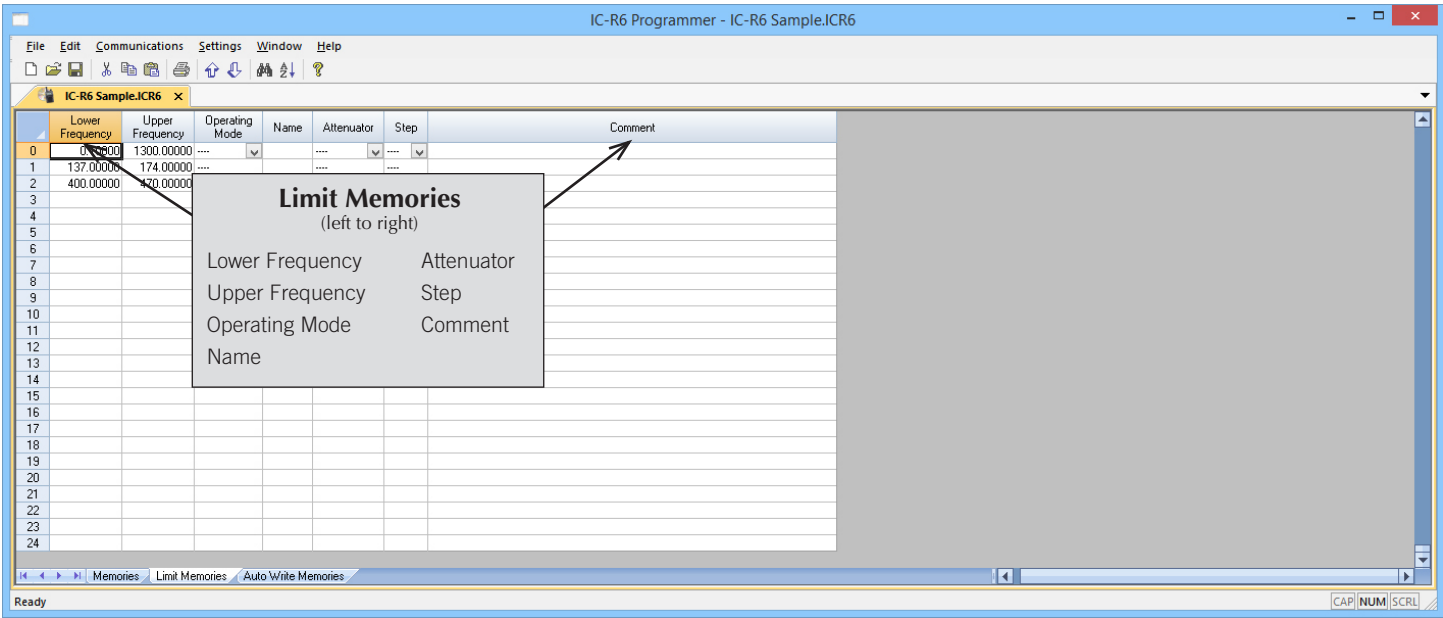
Open more than one file at a time. Memory channel information can be copied from one file to another within the Programmer making it really easy to set up a new file.



Hardware Requirements:

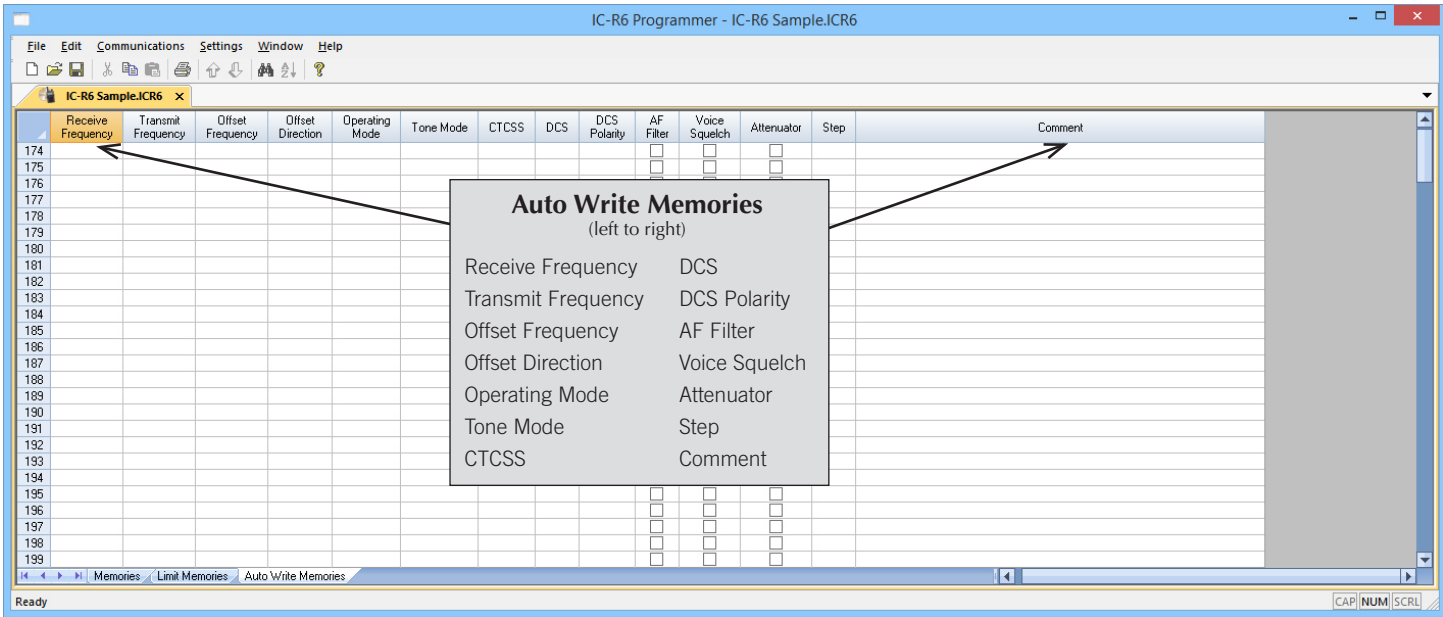
A PC running Windows XP (SP3), Vista, Windows 7 (32 or 64 bit) or Windows 8 or 8.1 (full version). CD drive for installation. Local USB port and RT Systems USB-29A interface cable. The cable connects the radio to the computer from the USB port on the computer to the speaker/mic jack on the radio.





Limit Memories

Limit Memories are used by the radio for Program Scan. Program the same details for Limit Memories as for regular memory channels. Many of the Limit Memories are preprogrammed in the radio and while the frequency can be changed to another within the band, they cannot be left blank.



Auto Write Memories

Auto memory write scan stores the detected frequency, mode and tone into a specified memory.

Menu Settings for IC-R6 - Untitled.rsf

File Tabs Help

Common

☐ AF Filter (AM)
☐ AF Filter (FM)
☐ AF Filter (WFM)
☒ Dial Speed Acceleration
☐ Extended Menu
☒ Key Beep

CI-V
Address: 7Eh
Baud Rate: Auto
☒ Transceive

Auto Power Off: Off
AM Antenna: External
FM Antenna: External
Backlight: Auto1
Beep Level: Volume
Charge Type: Charge2
Dial Function: Tuning Dial
Dial Select Step: 1 MHz

Key Lock: Normal
LCD Contrast: 2
Memory Display: Frequency
Moni Key Action: Push
Power Save: Auto
Priority Watch: Off
Squelch Level: Auto
Volume Level: 19

Scan
☒ Program Skip
☐ Stop Beep
Pause Timer: 10 seconds
Resume Timer: 2 seconds

Wx
☐ Alert
Channel: 1

Radio Comment

Common

Use this screen to customize other set menu features of the radio. Check boxes toggle features on or off, drop down menus list all selections and blank boxes for personalized entry add to the ease of setting up your radio exactly like you want it.

The entries on the Settings screens are made for you to “Set and Forget”. Once settings are customized, you are prompted to save before exiting. The saved settings will be there every time you create a new frequency file.

The screenshot shows the 'Preferences' dialog box with the 'Grid Display' tab selected. The 'Freeze' dropdown is set to '1'. The 'Alternate row' section shows a table with rows 1 to 4 and a column 'A'. The 'Mark the columns to hide' section shows a table with columns and a 'Hide' checkbox for each. The 'Language' dropdown is set to 'English'. The 'OK', 'Cancel', and 'Apply' buttons are at the bottom.

Column	Hide
Transmit Frequency	<input type="checkbox"/>
Offset Frequency	<input type="checkbox"/>
Offset Direction	<input type="checkbox"/>
Name	<input type="checkbox"/>
Tone Mode	<input type="checkbox"/>
CTCSS	<input type="checkbox"/>
Rx CTCSS	<input type="checkbox"/>
DCS	<input type="checkbox"/>
Tx Power	<input type="checkbox"/>
Busy Channel Lockout	<input type="checkbox"/>
Skip	<input type="checkbox"/>
Clock Shift	<input type="checkbox"/>
Battery Save	<input type="checkbox"/>
Comment	<input type="checkbox"/>

Grid Display

- RT Systems now available in English, French, German, Italian, Spanish, Portuguese and Japanese.
- Set colors for text (Fore) or background (Back) of alternate rows for easier viewing across the columns.
- Freeze columns to keep information on the screen as you scroll to the right of the page.
- Hide columns you don't use. Customize your print-out: hidden columns do not print.
- Use Combo for Check boxes – changes the grid to eliminate check box selections that are disabled on some systems.

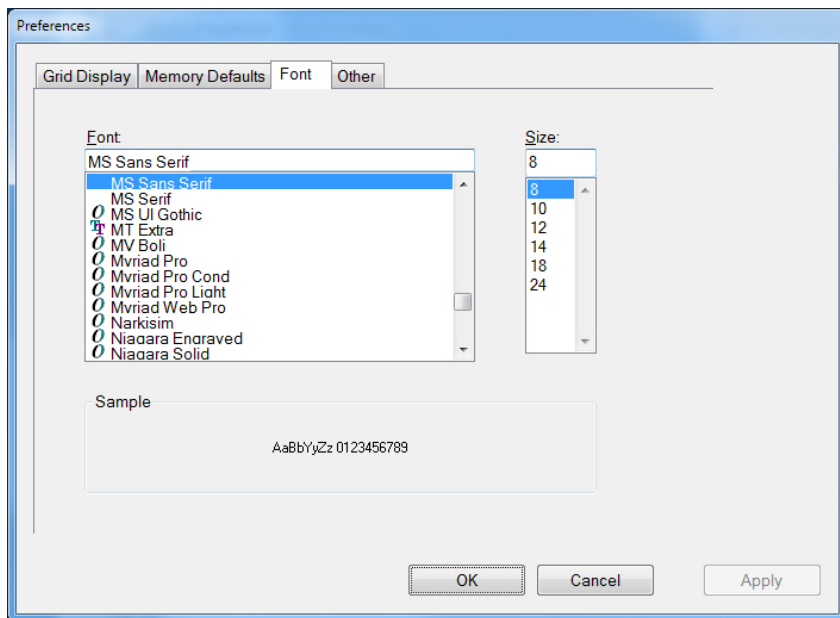
The screenshot shows the 'Preferences' dialog box with the 'Memory Defaults' tab selected. The 'Open last file when starting programmer' checkbox is checked. The 'Check ShowName Automatically' checkbox is checked. The 'Convert Split offsets to standard Plus or Minus when available' checkbox is checked. The 'Disable CTCSS, DCS and other Tone columns according to the Tone Mode selection' checkbox is checked. The 'Offset Frequency Defaults' section shows a table with frequency ranges and their corresponding offset frequencies. The 'Add and Remove Offsets' section shows a table with a list of offsets and a 'Remove' button. The 'OK', 'Cancel', and 'Apply' buttons are at the bottom.

Offset Frequency Defaults	
HF	100 kHz
6m	500 kHz
2m	600 kHz
1.25m	1.60 MHz
70cm	5.00 MHz

Offset	
1	100 kHz
2	500 kHz
3	600 kHz
4	1.00 MHz

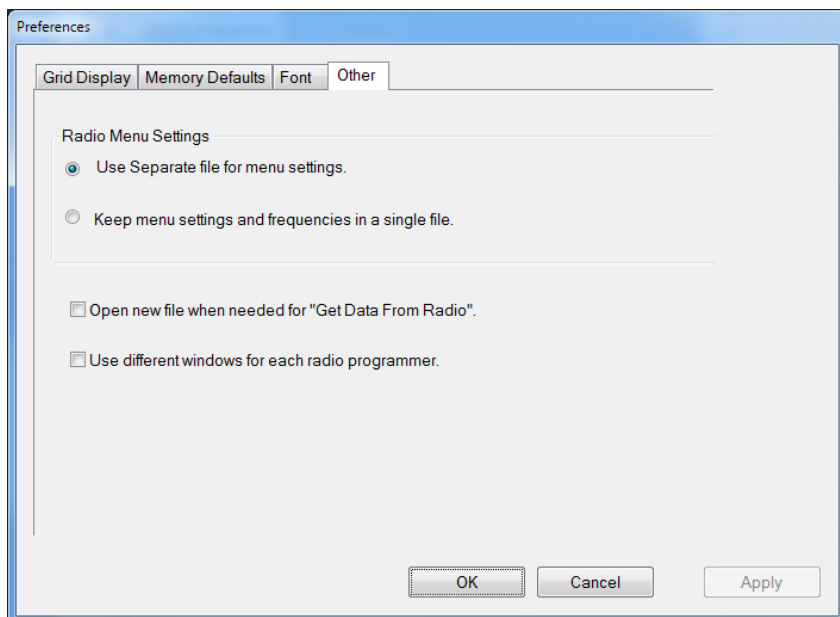
Memory Defaults

- Set options to control auto fill information for memory channel entries.



Font

- Set options to control the font in the column headers of the channel entry screens. Select any font and font size available on your computer.



Other

- Set options to control how the programmer handles the global Radio Menu Settings file.
 - Separate (default) handles the global settings of the radio in a “set and forget” fashion. Once you set these up and save the file you won’t have to reset them for a new frequency file.
 - “Single file” gives you the ability to create files that are complete with frequencies and customized global settings. In this mode, each file begins with factory defaults for every option of the radio.
- Check “Get data from Radio” new file option to prevent data loss when you read from your radio into the programmer.
- Check “different window” option to make the programmer for a different radio run in completely separate window rather than in a separate tab of the same window.

Buy Now